

SAFETY ORGANIZATION(S).

THIS FILTER HAS BEEN FORMALLY RECOGNIZED, CERTIFIED OR APPROVED BY THE LISTED AGENCY. THEREFORE, ALL TEST/REQUIREMENTS SPECIFIED IN THE LATEST REVISION OF THE FOLLOWING AGENCY STANDARDS HAVE BEEN MET.

UL 1283
 CSA 22.2 NO. 0, 0.4, 8

OPERATING SPECIFICATIONS:

LINE VOLTAGE/CURRENT, 45 OR 60 AMP., 250VAC PHASE/NEUTRAL-GND
 45 OR 60 AMP., 440VAC PHASE/PHASE
 50-60HZ
 LINE FREQUENCY, 1.4mA @ 120V 60HZ
 MAX. CASE RISE @ RATED CURRENT, 40°C
 MAX. LEAKAGE CURRENT, EACH 3.4mA @ 250V 50HZ
 LINE TO GROUND
 OPERATING AMBIENT TEMP. RANGE, -10°C TO +40°C @ RATED CURRENT, I_r

IN AN AMBIENT, T_a, HIGHER THAN 40°C, THE MAXIMUM OPERATING CURRENT, I_o, IS AS FOLLOWS,

$$I_o = I_r \sqrt{\frac{85 - T_a}{45}}$$

RELIABILITY SPECIFICATIONS:

STORAGE TEMPERATURE, -25°C TO +85°C
 HUMIDITY, 21 DAYS @ 40°C 95% RH

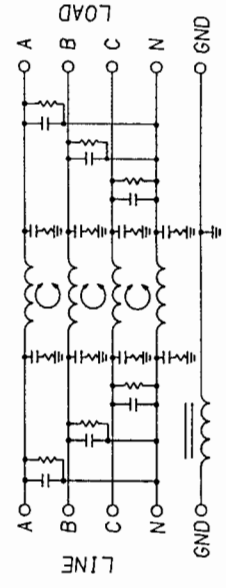
TEST SPECIFICATIONS:

INDUCTANCE, 45A = 1.1mH NOMINAL 60A = 0.74mH NOMINAL
 GROUND CHOKES, 45A = .261mH NOMINAL 60A = .242mH NOMINAL
 CAPACITANCE, (MEASURED @ 1 KHZ, 0.25 VAC MAX., 25°C ±1°C)
 PHASE/NEUTRAL TO GROUND, .026µF ±20%
 PHASE TO NEUTRAL, 2.0µF ±20%
 DISCHARGE RESISTOR, 165K OHMS
 LINE/GROUND AND LINE/LINE, 6000 MΩ (MIN) AT 100 VDC
 INSULATION RESISTANCE (W/O DISCHARGE RESISTOR) 20°C AND 50% RH

RECOMMENDED RECEIVING INSPECTION HIPOUT,
 PHASE/NEUTRAL TO GROUND, 1500 VAC FOR 1 MINUTE
 PHASE TO NEUTRAL, 1450 VDC FOR 1 MINUTE

NOTES:

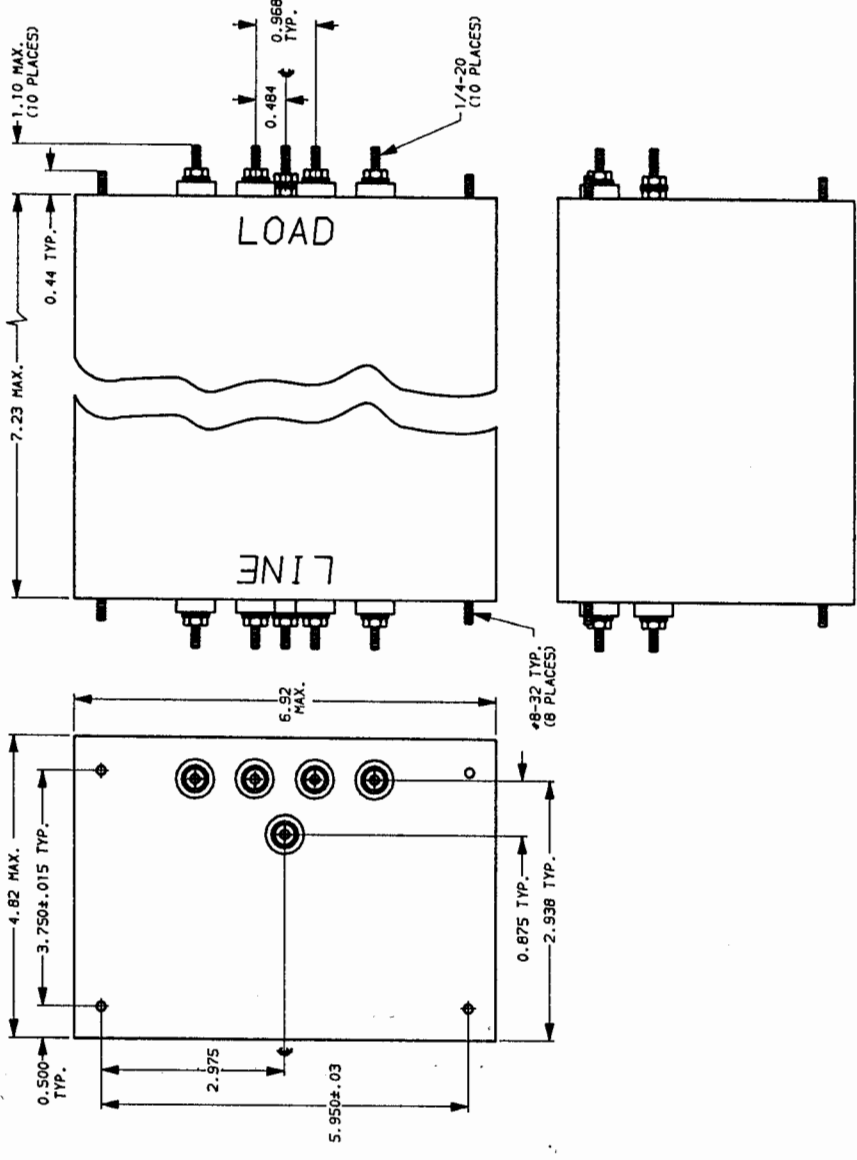
1.) LINE SIDE HAS INSULATED GROUND TERMINAL.



NOTE, COMMON MODE A-B-C & N SHORTED TOGETHER. DIFF. MODE MEASURED N TO A-B-C SHORTED TOGETHER.

50Ω - 50Ω (MINIMUM) INSERTION LOSS	
FREQUENCY MHz	DIFF. MODE
.05	.15
.15	.5
.5	1.0
1.0	5.0
5.0	10.0
10.0	30.0
COMMON	45A
8	25
15	49
30	49
60	56
120	58
240	45
DIFF.	45A
5	22
10	50
20	54
40	47
80	54
160	56
320	43
dB	60A
20	27
40	60
80	65
160	56
320	50

This document is proprietary to CORCOM INC. and is not to be reproduced nor used for manufacturing purposes except on CORCOM's order on prior written consent.



POWER LINE FILTER

SCALE	DATE	DRG. NO.	REV.
NTS	4-25-89	45A1P6C & 60A1P6C	2
DRW. BY	CFW		

X-ON Electronics

Largest Supplier of Electrical and Electronic Components

Click to view similar products for [Power Line Filters](#) category:

Click to view products by [TE Connectivity](#) manufacturer:

Other Similar products are found below :

[6609019-3](#) [6609026-5](#) [6609030-6](#) [6609973-2](#) [D30A](#) [7-1609090-5](#) [F2810](#) [F4456A](#) [F7382Z](#) [F7863Z](#) [FAHAV3100ZC000](#) [806276](#) [FN2020B-1-06](#) [FN2080B-10-06](#) [FN2410H-32-33](#) [FN2410H-80-34](#) [FP144](#) [FS4153-20-06](#) [FS4353-500-99](#) [12-MMB-030-11-D](#) [DB4-393](#) [15811T200](#) [20B1](#) [LC630](#) [2B1](#) [1609080-2](#) [1609993-8](#) [1-6609070-1](#) [F1100AA02](#) [F1150CC10](#) [F1500CA10](#) [F1500CA15](#) [F4041Z](#) [F7585E](#) [1B1](#) [FN2070A-16-06](#) [FN2090A-20-06](#) [FN2090B-12-06](#) [FN2090Z-1-06](#) [FN2410H-25-33](#) [FN2410H-60-34](#) [FN2410H-8-44](#) [FN2412H-8-44](#) [FN323B-6-01](#) [FN3258H-130-35](#) [FN610R-3-06](#) [20EHQ7](#) [20EHZ7](#) [20K1](#) [30B6](#)