

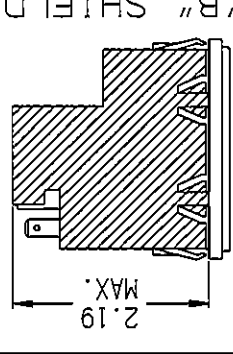
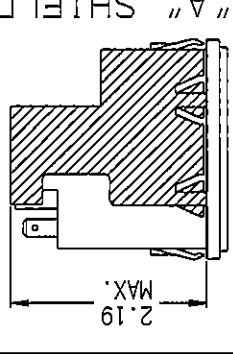
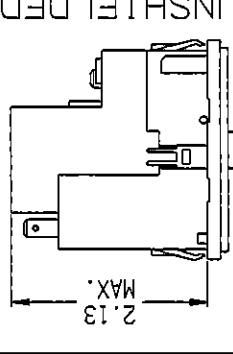
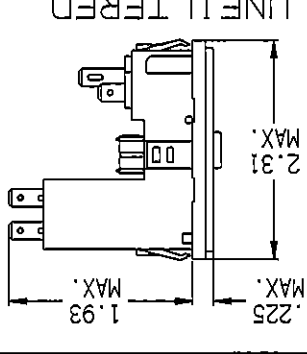
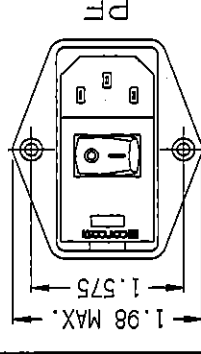
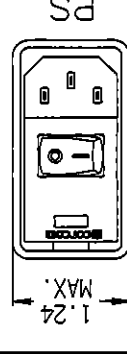
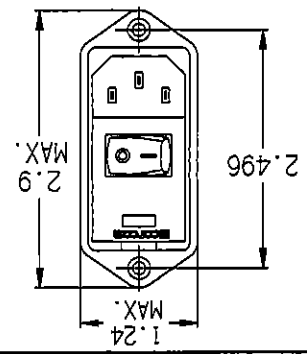
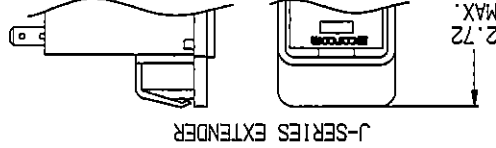
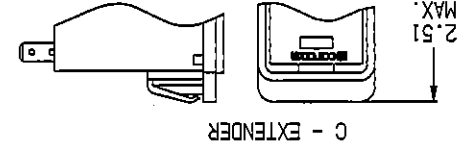
MINIMUM INSERTION LOSS IN DB
LINE TO GROUND IN 50 OHM CIRCUIT

MINIMUM INSERTION LOSS IN DB
LINE TO LINE IN 50 OHM CIRCUIT

RECOMMENDED PANEL CUTOUTS

CURRENT	FREQUENCY MHZ			CURRENT	FREQUENCY MHZ			STYLE	DIMENSION 'A'	
	0.15	0.5	1		3	5	10		30	UNSHIELDED
3 AMP	21	27	30	29	26	23	15	PSL	1.12	2.201 *
6 AMP	11	15	17	19	18	16	13	PE	1.12	2.201 *
10 AMP	5	8	10	12	11	11	10	PM	1.12	2.201 *
3 AMP	21	27	33	40	44	50	32	PSC	1.06	2.52
6 AMP	12	17	23	32	36	44	30	PSC	1.06	2.52
10 AMP	5	10	13	23	27	35	27	PSJ	1.06	2.6

* FOR PANEL THICKNESS OF 0.031" - 0.079" ONLY.
 USE 2.213 FOR PANEL THICKNESS OF 0.083" - 0.114"



2.496

2.9

1.98 MAX.

1.24

2.25

2.31

2.13

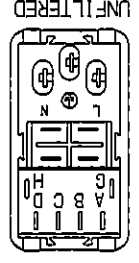
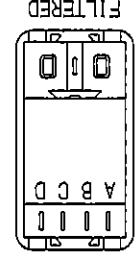
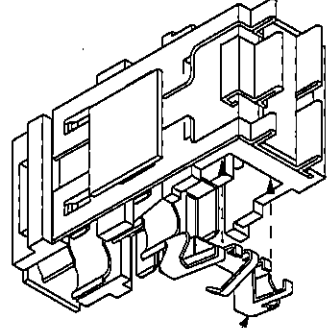
2.19

2.19

- P = MOUNTING STYLE
- S = SEE VIEW ABOVE
- E = SEE VIEW ABOVE
- S = SEE VIEW
- M = SEE VIEW
- O = NONE
- L = FN260
- L = J SERIES
- L = L SERIES
- O = BLANK
- S = DOUBLE POLE
- S = SINGLE THROW
- 0 = SINGLE VOLTAGE
- S = DUAL VOLT. SELECT (SMP)
- X = DUAL VOLT. SELECT (SERIES/PARALLEL)

- 0 = NO SHIELD
- A = FILTER SHIELD
- B = COMPLETE SHIELD
- 0 = NO FILTER
- 3 = 3 AMP
- 6 = 6 AMP
- X = 10 AMP
- 0 = NO FILTER
- 8 = INTERCONNECTION BLOCK
- H = MEDICAL FILTER
- S = GENERAL PURPOSE
- D = DUAL FUSE
- S = SINGLE FUSE

CONVERSION CLIP FOR SINGLE FUSE APPLICATIONS

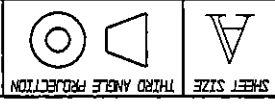


REAR VIEW

Tyco Electronics
 CUSTOMER DRAWING
 CONCOM PRODUCTS, 620 S. BUTTERFIELD RD., WUNDELEIN IL 60060

TYCO ELECTRONICS PART NO. P-SERIES

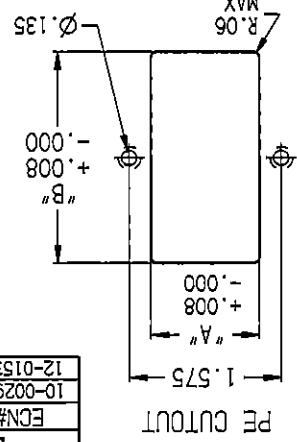
SCALE: 1:2
 DATE: 2-4-97
 DRW. BY: [REDACTED]
 REV. [REDACTED]



THIS INFORMATION IS CONFIDENTIAL AND PROPRIETARY TO TYCO ELECTRONICS CORPORATION AND ITS WORLDWIDE SUBSIDIARIES AND AFFILIATES. IT MAY NOT BE DISCLOSED TO ANYONE OTHER THAN TYCO ELECTRONICS PERSONNEL, WITHOUT WRITTEN AUTHORIZATION FROM TYCO ELECTRONICS CORPORATION.
 HARRISBURG, PENNSYLVANIA USA.

SHEET 1 OF 2

ECN#	APPRVD	DATE	REV
10-002963	ELC	19AUG10	C
12-015327	TAM	22AUG12	D



PM CUTOUT

PE CUTOUT

NOTE: FOR SNAP-IN APPLICATIONS, THE A SIDES MUST HAVE A .020 R. ON INSTALLATION SIDE.



THIS INFORMATION IS CONFIDENTIAL AND PROPRIETARY TO TYCO ELECTRONICS CORPORATION AND ITS WORLDWIDE SUBSIDIARIES AND AFFILIATES. IT MAY NOT BE DISCLOSED TO ANYONE OTHER THAN TYCO ELECTRONICS PERSONNEL, WITHOUT WRITTEN AUTHORIZATION FROM TYCO ELECTRONICS CORPORATION, HARRISBURG, PENNSYLVANIA USA.

SCALE: NA
DATE: 2/4/97
DRG: REV: D

REV: D
DRAWING NUMBER: P-SERIES

TYCO ELECTRONICS PART NO. P-SERIES
 CUSTOMER DRAWING P-SERIES
 CORCOM PRODUCTS, 620 S. BUTTERNUT RD., MUNDLEIN, IL 60060
Tyco Electronics

UL RECOGNIZED
CSA CERTIFIED
VDE APPROVED



THIS FILTER HAS BEEN FORMALLY RECOGNIZED, CERTIFIED OR APPROVED BY THE LISTED AGENCY. THEREFORE, ALL TEST/REQUIREMENTS SPECIFIED IN THE LATEST REVISION OF THE FOLLOWING AGENCY STANDARDS HAVE BEEN MET:

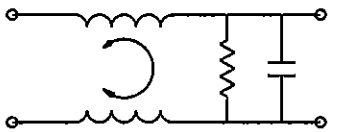
SAFETY ORGANIZATIONS

GENERAL NOTES:
CONVERSION CLIP PROVIDED ON FUSEHOLDER FOR SINGLE FUSE MODELS.
SWITCH: DOUBLE INSULATED RATED FOR 10,000 OPERATIONS AT FULL LOAD.
51 AMP INRUSH CAPABILITY.
TERMINALS: FOUR 0.187" x 0.032" QUICK CONNECT TABS
ONE SOLDER TERMINAL

SEE INDIVIDUAL CUSTOMER DRAWINGS FOR OTHER (L AND Z) P-SERIES VERSIONS.



S MODEL



H MODEL

RATED CURRENT, I_R:

3, 6 & 10 AMP
MODELS AVAILABLE

@ 250 VAC 50Hz:

S MODELS 0.50mA
H MODELS 51A

@ 120 VAC 60Hz:

H MODELS 27A
S MODELS 0.25mA

MAXIMUM LEAKAGE CURRENT, EACH LINE TO GROUND

NONFILTERED MODELS

RATED CURRENT, I_R:

10A @ 120 VAC
10A @ 250 VAC

FILTERED MODELS

CURRENT OVERLOAD TEST:

6 TIMES I_R FOR 8 SECONDS
HUMIDITY: 21 DAYS, 40°C @ 95% RH.
STORAGE TEMPERATURE: -40°C TO +85°C
OPERATING AMBIENT TEMP.: -10°C TO +40°C
OR 5 x 20mm
1/4" x 1-1/4"

SELECTABLE OR FIXED:

1500 VAC
1450 VDC
50/60 Hz
RATED VOLTAGE:
120/250 VAC
115/230 VAC
SELECTABLE FUSEHOLDER
ACCEPTS 1 OR 2 FUSES

HIPOT RATING (ONE MINUTE)

LINE TO GROUND:

LINE TO LINE:

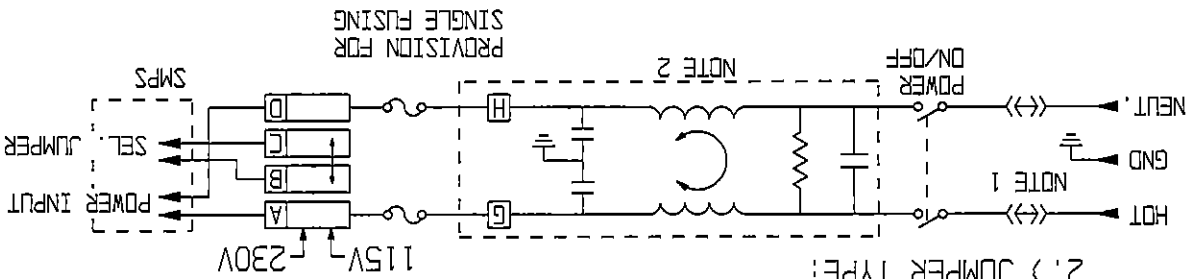
OPERATING FREQUENCY:

RATED VOLTAGE:

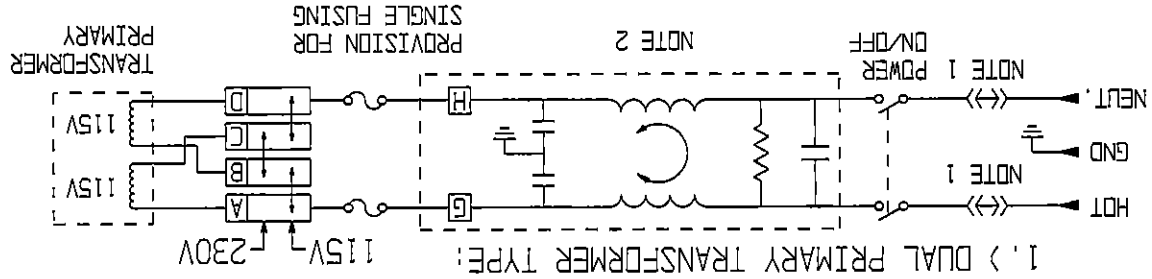
OPERATING VOLTAGES:

SPECIFICATIONS

NOTE 1: JUMPERS ARE REQUIRED IF A FILTER OR INTERCONNECTION MODULE IS NOT USED.
NOTE 2: LOCATION OF OPTIONAL FILTER, JUMPERS ARE REQUIRED IF A FILTER OR INTERCONNECTION MODULE IS NOT USED.



2.) JUMPER TYPE:



1.) DUAL PRIMARY TRANSFORMER TYPE:

X-ON Electronics

Largest Supplier of Electrical and Electronic Components

Click to view similar products for te connectivity manufacturer:

Other Similar products are found below :

[570416-000](#) [CLTEQ-M81CE-SSRELAY-4-20V](#) [D38999/24FJ4AN](#) [358838-000](#) [4-1195131-0](#) [650069-000](#) [SMD100-2](#) [CB-1022B-78](#)
[RM707012](#) [RP410012](#) [MMS42](#) [1-640426-8](#) [2EDL4CM](#) [DTS20W19-11PD-3028-LC](#) [RM202615](#) [NC6-P104-06](#) [TXR64AB90-3616AI](#)
[MSPS103B](#) [DTS26F21-41AE](#) [DTS26F21-41PE-LC](#) [DTS26F21-11SE-3028-LC](#) [1932144-1](#) [293545-4](#) [LVR125S](#) [MS27466T25F4PB](#) [CKB-](#)
[38-78010](#) [1206SFF150F/63-2](#) [5-2027513-8](#) [D38999/20JB35HA](#) [D38999/24WJ20PA](#) [1754138-1](#) [TE1500A2R2J](#) [DTS24F25-29PC-3028-LC](#)
[164-8033-08](#) [D38999/24WG11HA](#) [D38999/24WG11HN](#) [MS27467T21F11H](#) [DJT16E21-11HA](#) [1206SFH150F/24-2](#) [1-532955-3](#) [DTS24F19-](#)
[11SC-3028-LC](#) [DTS24F21-41HN-LC](#) [DTS24F21-41AN](#) [DTS24F21-41PN-LC](#) [DBAS 70-7-0 SN 090-1A SCC](#) [MS27467T21F35J](#)
[MS27467T21F11J](#) [MS27467T21F16H-LC](#) [MS27467T21F35H](#) [MS27467T21F41H-LC](#)