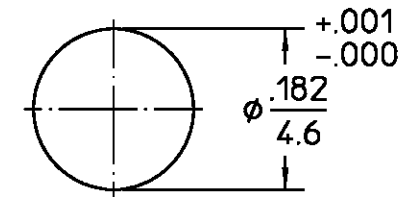
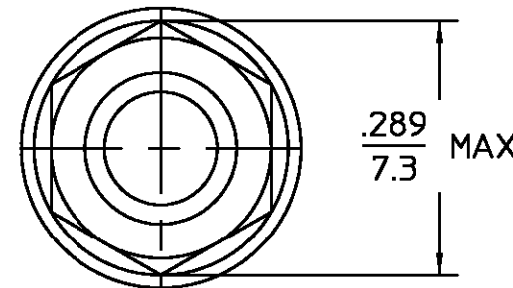


DESIGNED FOR USE WITH	.085 S/R
CABLE ENTRY DIAMETER MINIMUM	
CONTACT	.0225
HOUSING	.089

REVISIONS			
REV	DESCRIPTION	DATE	APPROVED
B1	REVISED PER ECO-11-005030	30MAR11	HMR



RECOMMENDED MOUNTING HOLE

ELECTRICAL	MECHANICAL	ENVIRONMENTAL	COMPONENT	MATERIAL	FINISH
Nominal Impedance (Ohms) <u>50 ±1</u>	Interface Dimensions <u>SEE CATALOG</u>	Temperature Rating <u>-65° to +125°C</u>	HOUSING MOUNTING NUT LOCKWASHER	STAINLESS STEEL PER ASTM-A484 AND ASTM- A582, TYPE 303	GOLD PLATE PER MIL-G-45204
Frequency Range (GHz) DC to <u>28</u>	Mating Characteristics:	Vibration MIL-STD-202, Method 204, Condition D	DIELECTRIC	PTFE FLUOROCARBON PER ASTM-D-1457	N/A
Volt Rating (VRMS MAX) @ Sea Level <u>335</u>	Insertion (MAX Lbs) <u>3</u>	Shock MIL-STD-202, Method 213, Condition I	CENTER CONTACT	BERYLLIUM COPPER PER ASTM-B-196 OR ASTM-B-197, ALLOY C17300, CONDITION H	GOLD PLATE PER MIL-G-45204
VSWR <u>1.05±.01 f(GHz)</u>	Withdrawal (MIN Oz) <u>0.5</u>	Thermal Shock MIL-STD-202, Method 107, Condition B	O-RING	FLUROSILICONE 60 (DUROMETER) PER MIL-R-25988, CLASS 1, TYPE 1	N/A
Insertion Loss (dB MAX) <u>.04x√f(GHz)</u>	Force to Engage (In-Lbs MAX) <u>3</u> & Disengage (In-Lbs MAX) <u>15</u>	Moisture Resistance MIL-STD-202, Method 106			
RF Leakage (dB MIN) (Interface Only, Fully Mated) <u>-(90-f(GHz))</u>	Center Contact Captivation Axial (Lbs) <u>4</u>	Corrosion - MIL-STD-202, Method 101, Condition B			
Corona, 70,000 Ft (VRMS MIN) <u>250</u>	Cable Retention Axial Force (Lbs MIN) <u>30</u>				
Dielectric Withstanding Voltage (VRMS MIN) @ Sea Level <u>675</u>	Torque (In-Oz MIN) <u>16</u>				
Contact Resistance (Milliohms MAX)	Weight (Grams) <u>TBD</u>				
Center Contact <u>6.0</u>					
Outer Contact <u>3.0</u>					
Cable to Housing <u>0.5</u>					
RF High Potential @ Sea Level (VRMS MIN @ 5 MHz) <u>670</u>					
LR.(Megohms MIN) <u>5000</u>					
			UNLESS OTHERWISE SPECIFIED DIMENSIONS ARE IN INCHES	DRAWN BY D. CAM DATE 1-3-85	
			FRAC. DEC. ANGLES ± 1/64 ±.005 ± 1°	CHECKED BY PCV DATE 1-3-85	
				APP'D BY PCV DATE 2-2-85	
				USE ASS'Y PROCEDURE	TITLE OSSP BULKHEAD FEEDTHRU CABLE PLUG-DIRECT SOLDER ATTACHMENT
				NO. AP. <u>47-003</u>	SIZE B CODE IDENT NO. 26805 1059857-1 REV B1
				CUSTOMER DRAWING	SCALE 5:1 SHEET 1 OF 1

.XXX = in
XX.X = mm (REF)

X-ON Electronics

Largest Supplier of Electrical and Electronic Components

Click to view similar products for [RF Connectors / Coaxial Connectors](#) category:

Click to view products by [TE Connectivity](#) manufacturer:

Other Similar products are found below :

[8915-1511-000](#) [89674-0827](#) [6001-7071-019](#) [6002-7051-003](#) [6002-7551-202](#) [6059674-1](#) [619550-1](#) [630059-000](#) [M39030/3-01N](#) [6500-7071-046](#) [6769](#) [CX050L2AQ](#) [7002-1541-010](#) [7002-1542-011](#) [7004-1512-000](#) [7009-1511-004](#) [7010-1511-000](#) [7029-1511-060](#) [7101-1541-010](#) [7101-1571-002](#) [7105-1521-002](#) [7145-1521-002](#) [7203-1571-003](#) [7209-1511-011](#) [7210-1511-015](#) [7210-1511-019](#) [73137-5015](#) [73216-2241](#) [73404-2300](#) [7405-1521-005](#) [7405-1521-802](#) [8527](#) [8547](#) [FS11V](#) [877931](#) [8808-1511-001](#) [9074-9513-000](#) [9101-9573-002](#) [910A205F](#) [9130-9573-002](#) [PL11SC-026](#) [PL375-33](#) [PL40-5](#) [PL74C-221](#) [PL75MC-217](#) [PL803-7](#) [1200690078](#) [1-201144-1](#) [R107003010W](#) [R110A172100](#)