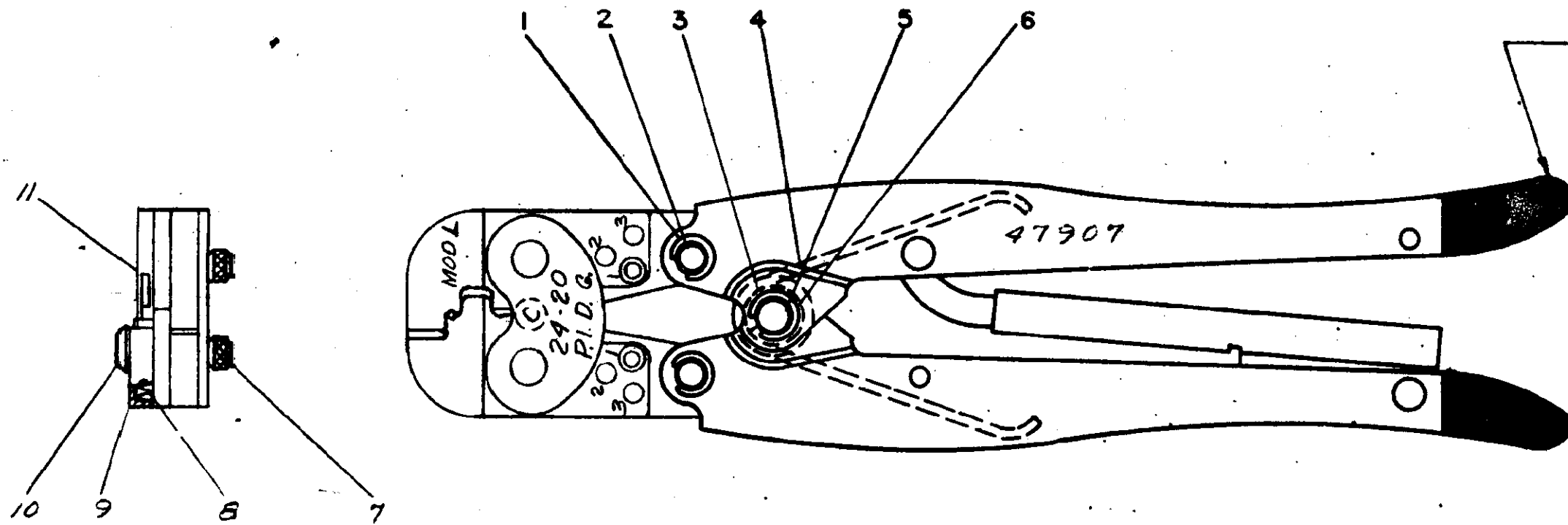


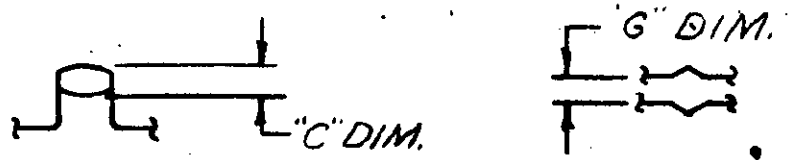
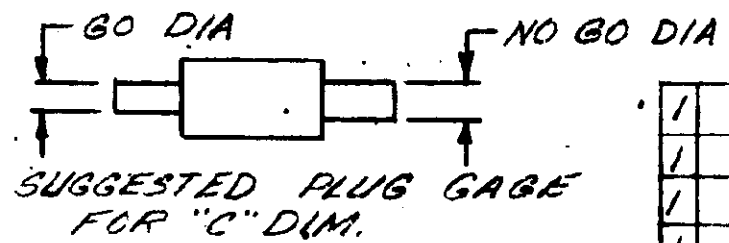
S



COLOR CODED:
WHITE

GAGE DIMENSIONS APPLY WHEN TOOL IS
BOTTOMED BUT NOT UNDER PRESSURE.

FOR REPLACEMENT OF PARTS OTHER THAN
LISTED, TOOL SHOULD BE RETURNED TO OUR
FACTORY TO INSURE PROPER CERTI-CRIMP
ADJUSTMENT.



1	303542	STOP	11
1	9-305927-1	SCREW	10
1	302994	STOP HOUSING	9
1	301201	SPRING	8
2	39207	PIN ADJUSTMENT	7
2	21045-6	RING - RETAINING	6
1	300449	PIN - RETAINING	5
1	39364	SPRING	4
1	39366	COLLAR	3
2	300432	PIN - RETAINING	2
4	21045-3	RING - RETAINING	1

GAGE DIMS.			
"C" DIM.		"G" DIM.	
GO	NO GO	GO	NO GO
.083	.095	.030	.050

NO.	DATE	BY	CHK	DATE
61	REVISED	PL	ELR	10-29-69
62	REVISED	PL	ELR	12-2-69
LTR	REVISION RECORD	DR	CHK	DATE

NUMBER	DESCRIPTION
47907	

©1969 BY AMP INCORPORATED. ALL RIGHTS RESERVED.
AMP PRODUCTS COVERED BY PATENTS AND/OR PATENTS PENDING.

CUSTOMER COPY REFERENCE ONLY

AMP INCORPORATED
LANE SBURG PENNA.

DR: *F. J. [Signature]* 10-29-69
CHK: *[Signature]* 12-2-69

WIRE - RANGE - INSULATION: 24-20 + + +
TYPE: C PRE-INSULATED DIAMOND GRP

TOLERANCE EXCEPT AS NOTED: ± .015 = 1" 0
SCALE: 1/2" M B
NO: 47907
REV: L1

NAME: HAND TOOL ASSEMBLY MODL

DIMENSIONS IN INCHES DO NOT SCALE PRINT

8 7 6 5 4 3 2 1

X-ON Electronics

Largest Supplier of Electrical and Electronic Components

Click to view similar products for [Crimpers / Crimping Tools](#) category:

Click to view products by [TE Connectivity](#) manufacturer:

Other Similar products are found below :

[010-0096](#) [M225201-06](#) [M225202-37](#) [6-1579015-5](#) [CT150-2-D02](#) [622-6441LF](#) [M322](#) [6-304052-1](#) [63456-0054](#) [63484-3701](#) [63800-8355](#)
[63819-1875](#) [63819-2875](#) [63819-4475](#) [63823-3475](#) [63827-5375](#) [64001-0975](#) [64001-4175](#) [64005-0175](#) [662903-2](#) [690602-6](#) [7-1579001-9](#) [7-](#)
[23471-1](#) [762637-1](#) [808714-1](#) [811242-5](#) [999-50-020083](#) [1-21002-3](#) [1-21002-7](#) [12085270](#) [1-21002-6](#) [1-21113-6](#) [1-22548-4](#) [125442-1](#)
[DCE.91.073.BVC](#) [DCE.91.090.3MVM](#) [DCE.91.130.5MVU](#) [DCE.91.202.BVCM](#) [1338300-1](#) [1-354003-0](#) [1338301-1](#) [DF62/RE-MD](#) [142321](#)
[1456088-1](#) [1490794-1](#) [1-45804-6](#) [1490357-2](#) [1490357-3](#) [AX100749](#) [1-59619-7](#)