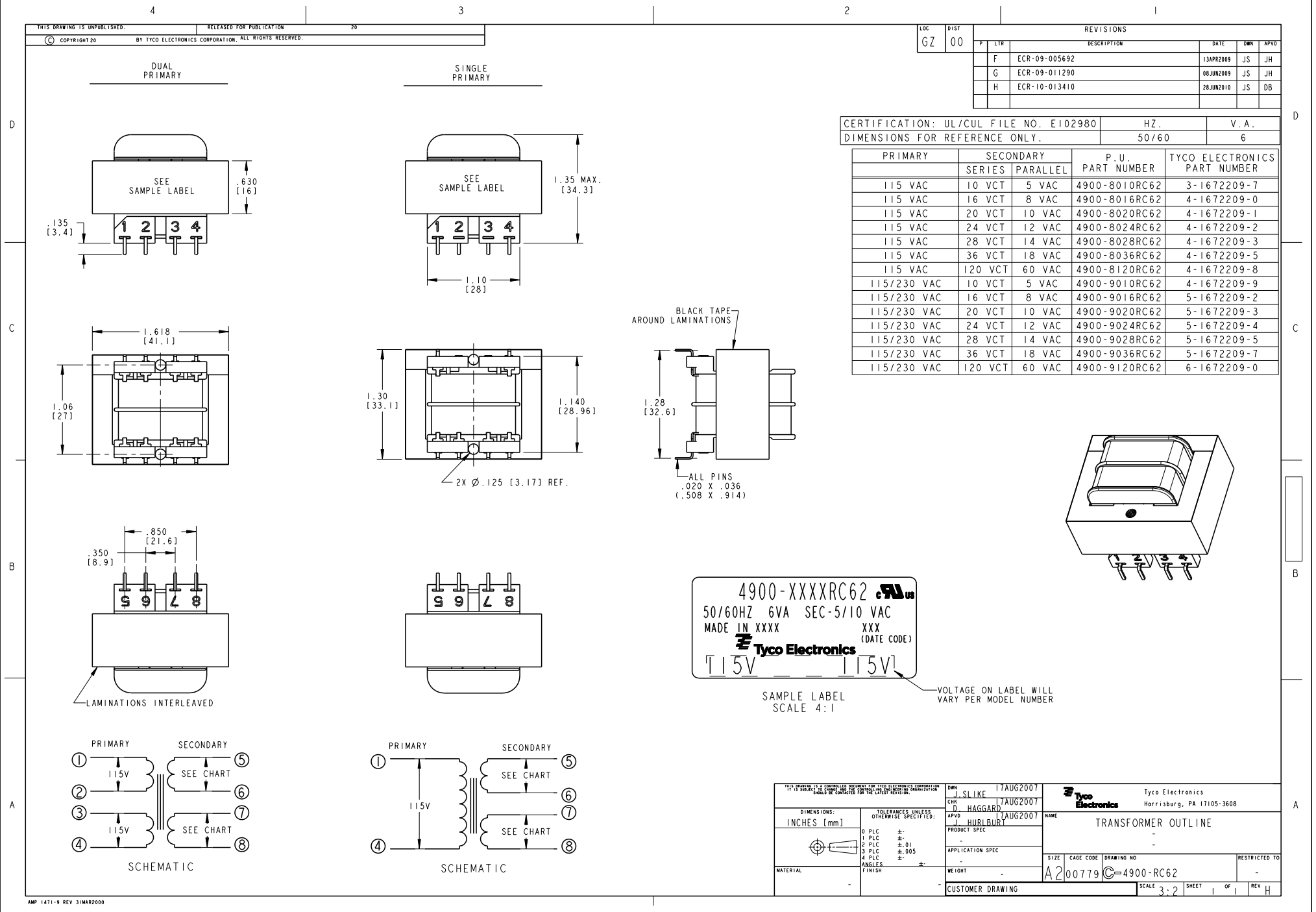


THIS DRAWING IS UNPUBLISHED. RELEASED FOR PUBLICATION
 © COPYRIGHT 20 BY TYCO ELECTRONICS CORPORATION. ALL RIGHTS RESERVED.

LOC	DIST	REVISIONS			
P	LTR	DESCRIPTION	DATE	DNW	APVD
F		ECR-09-005692	13APR2009	JS	JH
G		ECR-09-011290	08JUN2009	JS	JH
H		ECR-10-013410	28JUN2010	JS	DB

CERTIFICATION: UL/CUL FILE NO. E102980 HZ. 50/60 V. A. 6
 DIMENSIONS FOR REFERENCE ONLY.

PRIMARY	SECONDARY SERIES	PARALLEL	P. U. PART NUMBER	TYCO ELECTRONICS PART NUMBER
115 VAC	10 VCT	5 VAC	4900-8010RC62	3-1672209-7
115 VAC	16 VCT	8 VAC	4900-8016RC62	4-1672209-0
115 VAC	20 VCT	10 VAC	4900-8020RC62	4-1672209-1
115 VAC	24 VCT	12 VAC	4900-8024RC62	4-1672209-2
115 VAC	28 VCT	14 VAC	4900-8028RC62	4-1672209-3
115 VAC	36 VCT	18 VAC	4900-8036RC62	4-1672209-5
115 VAC	120 VCT	60 VAC	4900-8120RC62	4-1672209-8
115/230 VAC	10 VCT	5 VAC	4900-9010RC62	4-1672209-9
115/230 VAC	16 VCT	8 VAC	4900-9016RC62	5-1672209-2
115/230 VAC	20 VCT	10 VAC	4900-9020RC62	5-1672209-3
115/230 VAC	24 VCT	12 VAC	4900-9024RC62	5-1672209-4
115/230 VAC	28 VCT	14 VAC	4900-9028RC62	5-1672209-5
115/230 VAC	36 VCT	18 VAC	4900-9036RC62	5-1672209-7
115/230 VAC	120 VCT	60 VAC	4900-9120RC62	6-1672209-0



DIMENSIONS: INCHES [mm]		TOLERANCES UNLESS OTHERWISE SPECIFIED: 0 PLC ±. 1 PLC ±. 2 PLC ±.01 3 PLC ±.005 4 PLC ±. ANGLES ±. FINISH		DWN J. SLIKE 17AUG2007 CHK D. HAGGARD 17AUG2007 APVD J. HURLBURY 17AUG2007 NAME PRODUCT SPEC APPLICATION SPEC WEIGHT CUSTOMER DRAWING		Tyco Electronics Harrisburg, PA 17105-3608 TRANSFORMER OUTLINE SIZE CAGE CODE DRAWING NO. RESTRICTED TO A200779 C=4900-RC62 SCALE 3:2 SHEET 1 OF 1 REV H	
----------------------------	--	--	--	--	--	---	--

X-ON Electronics

Largest Supplier of Electrical and Electronic Components

Click to view similar products for [Power Transformers](#) category:

Click to view products by [TE Connectivity](#) manufacturer:

Other Similar products are found below :

[ET-030A](#) [F-102X](#) [F-120X](#) [F-14X-1](#) [F-181U](#) [F-18A](#) [F-199U](#) [F-19X](#) [F-202U](#) [F-204U](#) [F-206U](#) [F-227X](#) [F-238U](#) [F-239U-1](#) [F-23U](#) [F24-250-B](#)
[F-242U](#) [F-245U](#) [F-264U](#) [F-265U](#) [F-267U](#) [F-281U](#) [F-283U](#) [F-290X](#) [F-295Z](#) [F-296Z](#) [F-298Z](#) [F-3143P](#) [F-3298Z](#) [F-33U](#) [F-346X](#) [F-35U](#) [F-](#)
[364U](#) [F-392A](#) [F-395X](#) [F-397U](#) [F-412X](#) [F-47U](#) [F-55X-1](#) [F-60U](#) [F-68U](#) [F-71U](#) [F-72Z](#) [F-74U](#) [F-83A](#) [F-84AC](#) [F-85U](#) [F-86U](#) [F-9U](#) [PCT-02](#)