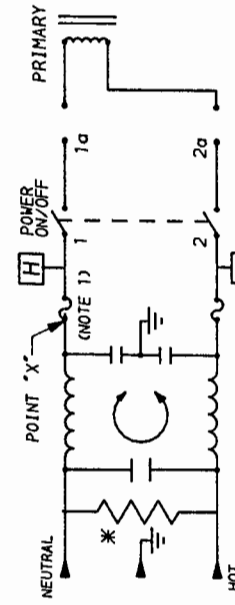
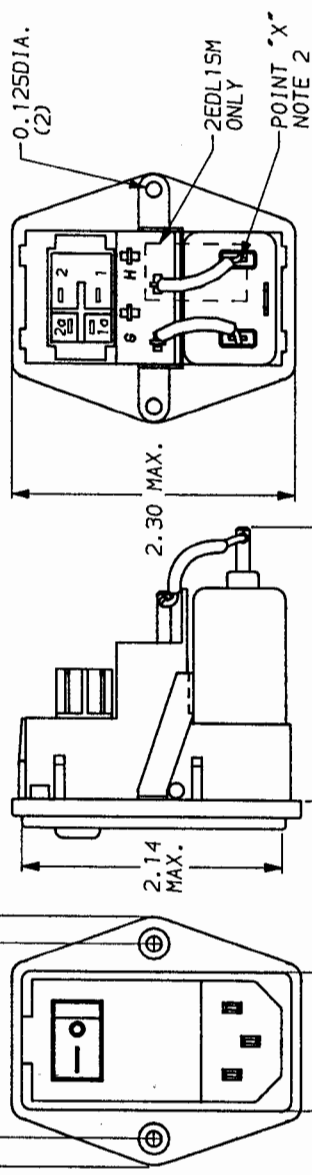
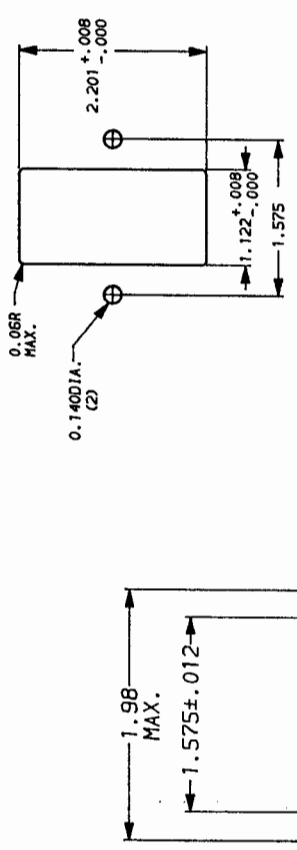


APPROVED BY C. Westberg DATE: 4-25-92 REV. 6

**RECOMMENDED PANEL CUTOUT**  
(NOT TO SCALE)



ALTERNATE SWITCH

**NOTE:**  
 1.) PROVISION FOR DUAL EUROPEAN STYLE FUSING.  
 2.) 2EDL15 JUMPER FROM POINT X TO 1 AND FROM G TO 2. 2EDL15CM JUMPER FROM H TO 1 AND FROM G TO 2.

**SAFETY ORGANIZATION(S).**  
 THIS FILTER HAS BEEN FORMALLY RECOGNIZED, CERTIFIED OR APPROVED BY THE LISTED AGENCY. THEREFORE, ALL TEST/REQUIREMENTS SPECIFIED IN THE LATEST REVISION OF THE FOLLOWING AGENCY STANDARDS HAVE BEEN MET.

UL RECOGNIZED  
 CSA CERTIFIED  
 VDE APPROVED  
 SEMKO APPROVED  
 SEV APPROVED

**OPERATING SPECIFICATIONS.**  
 LINE VOLTAGE/CURRENT:

2 AMP., 120/250 VAC  
 2 AMP./40°C, 250 VAC  
 50-60Hz  
 .25mA @ 120V 60Hz  
 .40mA @ 250V 50Hz  
 -10°C TO +40°C @ RATED CURRENT, I<sub>r</sub>

IN AN AMBIENT, I<sub>0</sub>, HIGHER THAN 40°C, THE MAXIMUM OPERATING CURRENT, I<sub>0</sub>, IS AS FOLLOWS:

$$I_0 = I_r \sqrt{\frac{85 - I_a}{45}}$$

**RELIABILITY SPECIFICATIONS.**  
 STORAGE TEMPERATURE:  
 HUMIDITY:  
 CURRENT OVERLOAD TEST:

25°C TO +85°C  
 21 DAYS @ 40°C 95% RH  
 6 TIMES RATED CURRENT FOR 8 SECONDS

**TEST SPECIFICATIONS.**  
 INDUCTANCE:  
 CAPACITANCE, (MEASURED @ 1 KHz, 0.25 VAC MAX., 25°C ± 1°C)

.75mH NOMINAL  
 .0028μF ± 20%  
 .047μF ± 20%

DISCHARGE RESISTOR,  
 LINE/GROUND AND LINE/LINE  
 INSULATION RESISTANCE  
 (W/O DISCHARGE RESISTOR)

1.5 MΩ  
 6000 MΩ (MIN) AT 100 VDC  
 20°C AND 50% RH

**RECOMMENDED RECEIVING INSPECTION HIPOT.**  
 LINES TO GROUND, 2250 VDC FOR 1 MINUTE  
 LINE TO LINE, 1450 VDC FOR 1 MINUTE

**FILTER APPROVAL.**  
 THE BEST WAY TO SELECT AND QUALIFY A FILTER IS FOR YOUR ENGINEERING TO TEST THE UNIT IN YOUR EQUIPMENT.

50Ω - 50g (MINIMUM)		INSERTION LOSS	
FREQUENCY MHZ	.05	.15	.50
COMMON	1.0	3.0	5.0
DIFF.	7	16	21
	23	37	47
	50		

This document is proprietary to CORCOM INC. and is not to be reproduced nor used for manufacturing purposes except on CORCOM's order or prior written consent.

TOLERANCE EXCEPT AS NOTED  
 DECIMAL: .XXX .XX .X ANGLES  
 ENGLISH: ±.025 ±.1  
 METRIC: ±

**MATERIAL: AS SUPPLIED**

**FINISH:**



**POWER LINE FILTER**

SCALE	DATE	DRG. NO.	REV.
NTS	3-4-87	2EDL15 & 2EDL15M	6
DESIGNER	LJD	CFH	

## X-ON Electronics

Largest Supplier of Electrical and Electronic Components

*Click to view similar products for [AC Power Entry Modules](#) category:*

*Click to view products by [TE Connectivity](#) manufacturer:*

Other Similar products are found below :

[0098.0050](#) [6167.0002](#) [6609100-2](#) [7-6609955-2](#) [FKI2-50-6/M5](#) [FN361-6-06](#) [FN389-4-22](#) [FN9226B-6-02](#) [FN9233S1-10-06](#) [FN9233S1-8-06](#)  
[FN9233S1B-8-06](#) [FN9233S1R-1-06](#) [FN9233S1R-12-06](#) [FN9233SB-1-06](#) [FN9233SB-12-06](#) [FN9233SB-8-06](#) [FN9233SR-10-06](#) [FN9244B-15-06HI](#) [FN9244EB-3-06](#) [FN9244EB-8-06](#) [FN9244ER-15-06](#) [FN9244ER-8-06](#) [FN9244ES1-8-06](#) [FN9244ESB-8-06](#) [FN9244R-12-06](#)  
[FN9244S1-12-06](#) [FN9244S1R-3-06](#) [FN9244SB-8-06](#) [FN9244SR-6-06](#) [FN9244U-3-06](#) [FN9244U-8-06](#) [8-6609940-2](#) [PE00SSSXB](#) [Fuse-H-EUR-1](#) [Fuse-H-USA-1](#) [PM00XD000](#) [A-0701-HT-H](#) [15EJMS8](#) [1-6609941-2](#) [200JM6-2](#) [CA121003-6](#) [SK-1015\(F1-5\)](#) [161-R3015-E](#) [1-6609153-2](#) [FN323-1-05](#) [FN9233B-8-06](#) [FN9233EB-1-06](#) [FN9233ES1R-10-06](#) [FN9233R-12-06](#) [FN9233S-10-06](#)