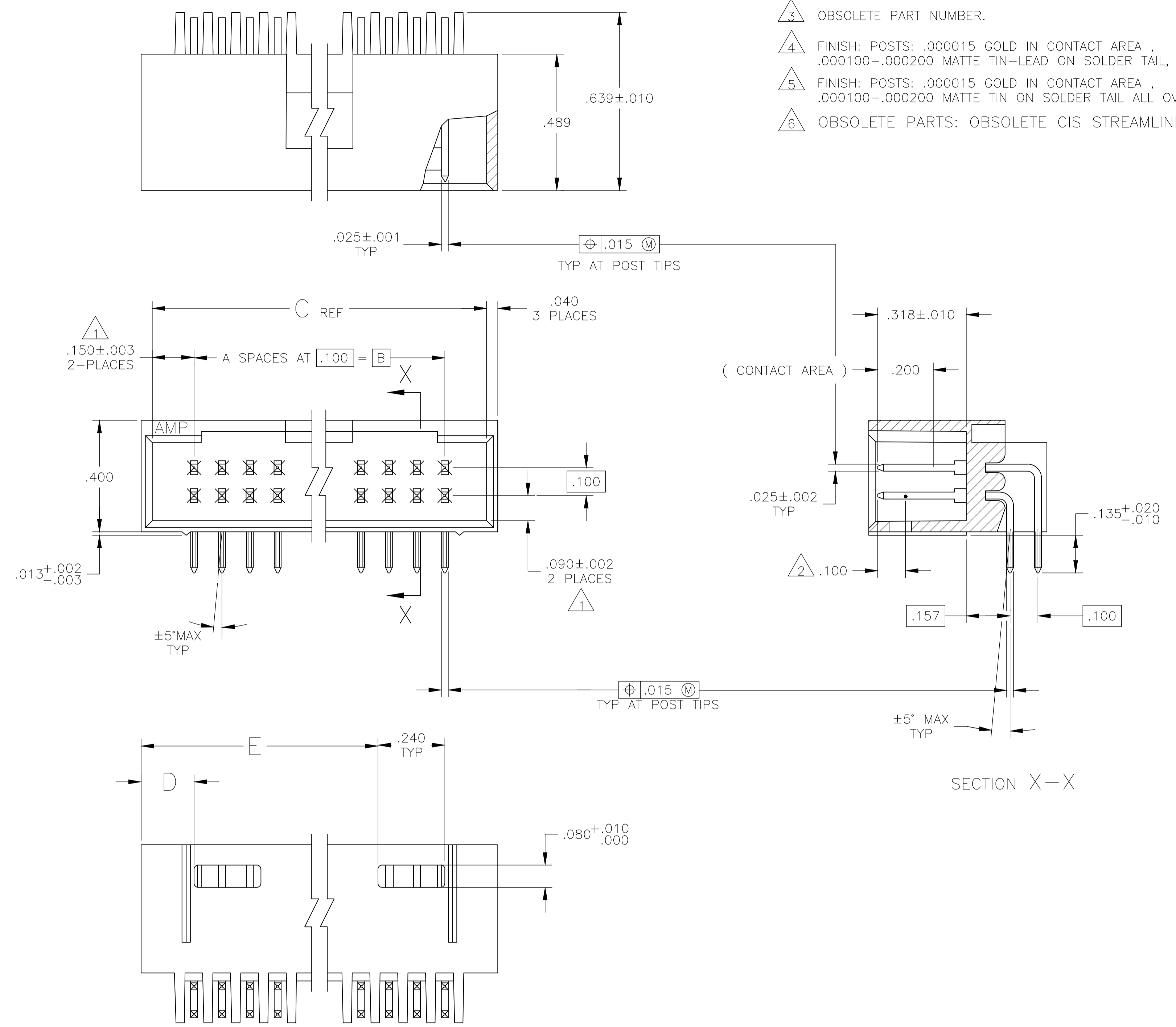
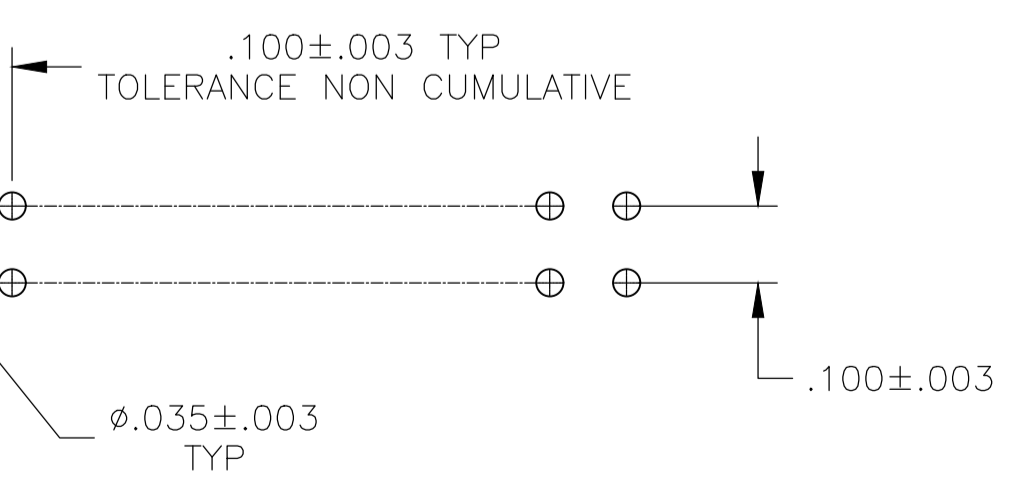


REVISIONS					
REV	DATE	DESCRIPTION	BY	CHK	APPV
H4	08FEB2018	PART STATUS UPDATED IN PART LIST TABLE	SD	PS	

- 1 THE NOTED DIMENSIONS APPLY AT THE INTERSECTION OF THE POST AND HOUSING.
- 2 POINT OF MEASUREMENT FOR PLATING THICKNESS.
- 3 OBSOLETE PART NUMBER.
- 4 FINISH: POSTS: .000015 GOLD IN CONTACT AREA , .000100-.000200 MATTE TIN-LEAD ON SOLDER TAIL, ALL OVER .000050 NICKEL.
- 5 FINISH: POSTS: .000015 GOLD IN CONTACT AREA , .000100-.000200 MATTE TIN ON SOLDER TAIL ALL OVER .000050 NICKEL.
- 6 OBSOLETE PARTS: OBSOLETE CIS STREAMLINING PER D.RENAUD/D.SINISI



REV	DATE	DESCRIPTION	BY	CHK	APPV	NO OF POSN	ASSEMBLY PART NUMBER
6		OBSOLETE				72	8-102570-3
5		OBSOLETE				70	8-102570-2
4		OBSOLETE				68	8-102570-1
3		OBSOLETE				66	8-102570-0
2		OBSOLETE				64	7-102570-9
1		OBSOLETE				62	7-102570-8
0		OBSOLETE				60	7-102570-7
0		OBSOLETE				58	7-102570-6
0		OBSOLETE				56	7-102570-5
0		OBSOLETE				54	7-102570-4
0		OBSOLETE				52	7-102570-3
0		OBSOLETE				50	7-102570-2
0		OBSOLETE				48	7-102570-1
0		OBSOLETE				46	7-102570-0
0		OBSOLETE				44	6-102570-9
0		OBSOLETE				42	6-102570-8
0		OBSOLETE				38	6-102570-7
0		OBSOLETE				36	6-102570-6
0		OBSOLETE				34	6-102570-5
0		OBSOLETE				32	6-102570-4
0		OBSOLETE				30	6-102570-3
0		OBSOLETE				28	6-102570-2
0		OBSOLETE				26	6-102570-1
0		OBSOLETE				24	6-102570-0
0		OBSOLETE				22	5-102570-9
0		OBSOLETE				20	5-102570-8
0		OBSOLETE				18	5-102570-7
0		OBSOLETE				16	5-102570-6
0		OBSOLETE				14	5-102570-5
0		OBSOLETE				12	5-102570-4
0		OBSOLETE				10	5-102570-3
0		OBSOLETE				8	5-102570-2
0		OBSOLETE				40	5-102570-1
0		OBSOLETE				72	3-102570-3
0		OBSOLETE				70	3-102570-2
0		OBSOLETE				68	3-102570-1
0		OBSOLETE				66	3-102570-0
0		OBSOLETE				64	2-102570-9
0		OBSOLETE				62	2-102570-8
0		OBSOLETE				60	2-102570-7
0		OBSOLETE				58	2-102570-6
0		OBSOLETE				56	2-102570-5
0		OBSOLETE				54	2-102570-4
0		OBSOLETE				52	2-102570-3
0		OBSOLETE				50	2-102570-2
0		OBSOLETE				48	2-102570-1
0		OBSOLETE				46	2-102570-0
0		OBSOLETE				44	1-102570-9
0		OBSOLETE				42	1-102570-8
0		OBSOLETE				38	1-102570-7
0		OBSOLETE				36	1-102570-6
0		OBSOLETE				34	1-102570-5
0		OBSOLETE				32	1-102570-4
0		OBSOLETE				30	1-102570-3
0		OBSOLETE				28	1-102570-2
0		OBSOLETE				26	1-102570-1
0		OBSOLETE				24	1-102570-0
0		OBSOLETE				22	102570-9
0		OBSOLETE				20	102570-8
0		OBSOLETE				18	102570-7
0		OBSOLETE				16	102570-6
0		OBSOLETE				14	102570-5
0		OBSOLETE				12	102570-4
0		OBSOLETE				10	102570-3
0		OBSOLETE				8	102570-2
0		OBSOLETE				40	102570-1



RECOMMENDED HOLE LAYOUT

THIS DRAWING IS A CONTROLLED DOCUMENT. **STE** TE Connectivity

DIMENSIONS: INCHES TOLERANCES UNLESS OTHERWISE SPECIFIED: 0 PLC ± - 1 PLC ± - 2 PLC ± - 3 PLC ± .005 4 PLC ± - ANGLES ± -	FINISH: SEE TABLE	MATERIAL: HOUSING: FINE RETENTIVE THERMOPLASTICS (BLACK) POSTS: POSN BRONZE	THIS DRAWING IS A CONTROLLED DOCUMENT. H. MOLL 25-8-87 CHK: L. A. MAYER 21-8-87 APVD: R. FEJDT 21-8-87 NAME: HDR ASSY, MOD II SHROUDED .100X.100 C/L 4 SIDES, DR RIGHT ANGLE W/ .025 SQ POSTS APPLICATION SPEC: - SIZE: A1 CAGE CODE: 00779 DRAWING NO: 102570 WEIGHT: - CUSTOMER DRAWING	RESTRICTED TO: - SCALE: 4:1 SHEET: 1 of 1 REV: H4
--	-------------------	---	---	--

X-ON Electronics

Largest Supplier of Electrical and Electronic Components

Click to view similar products for [Headers & Wire Housings](#) category:

Click to view products by [TE Connectivity](#) manufacturer:

Other Similar products are found below :

[892-18-020-10-001101](#) [58102-G61-06LF](#) [582553-1](#) [0009485154](#) [009176003701906](#) [0050291907](#) [LY20-4P-DT1-P1E-BR](#) [02.125.8002.8](#)
[609-3404](#) [61062-3](#) [61082-181009](#) [622-3653LF](#) [63453-116](#) [636-1030](#) [636-1427](#) [636-3427](#) [636-4007](#) [641938-9](#) [641991-4](#) [644827-2](#) [65817-010LF](#) [65817-015LF](#) [65863-015LF](#) [66207-023LF](#) [67095-007LF](#) [67601157](#) [68645-018](#) [68648-049](#) [70.362.1628.0](#) [70-4210](#) [70-4226B](#) [70-4853B](#) [707-5020](#) [707-5028](#) [71.350.2428.0](#) [71918-208LF](#) [71961-016LF](#) [733-134](#) [733-162](#) [754199-000](#) [760-3052](#) [787-8014-00](#) [79531-3000](#)
[FCN-360C032-B](#) [FCN-367T-T012/H](#) [FCN-723D010/2](#) [80.063.4001.1](#) [800-90-001-10-001000](#) [800-90-010-10-002000](#) [801-43-002-10-013000](#)