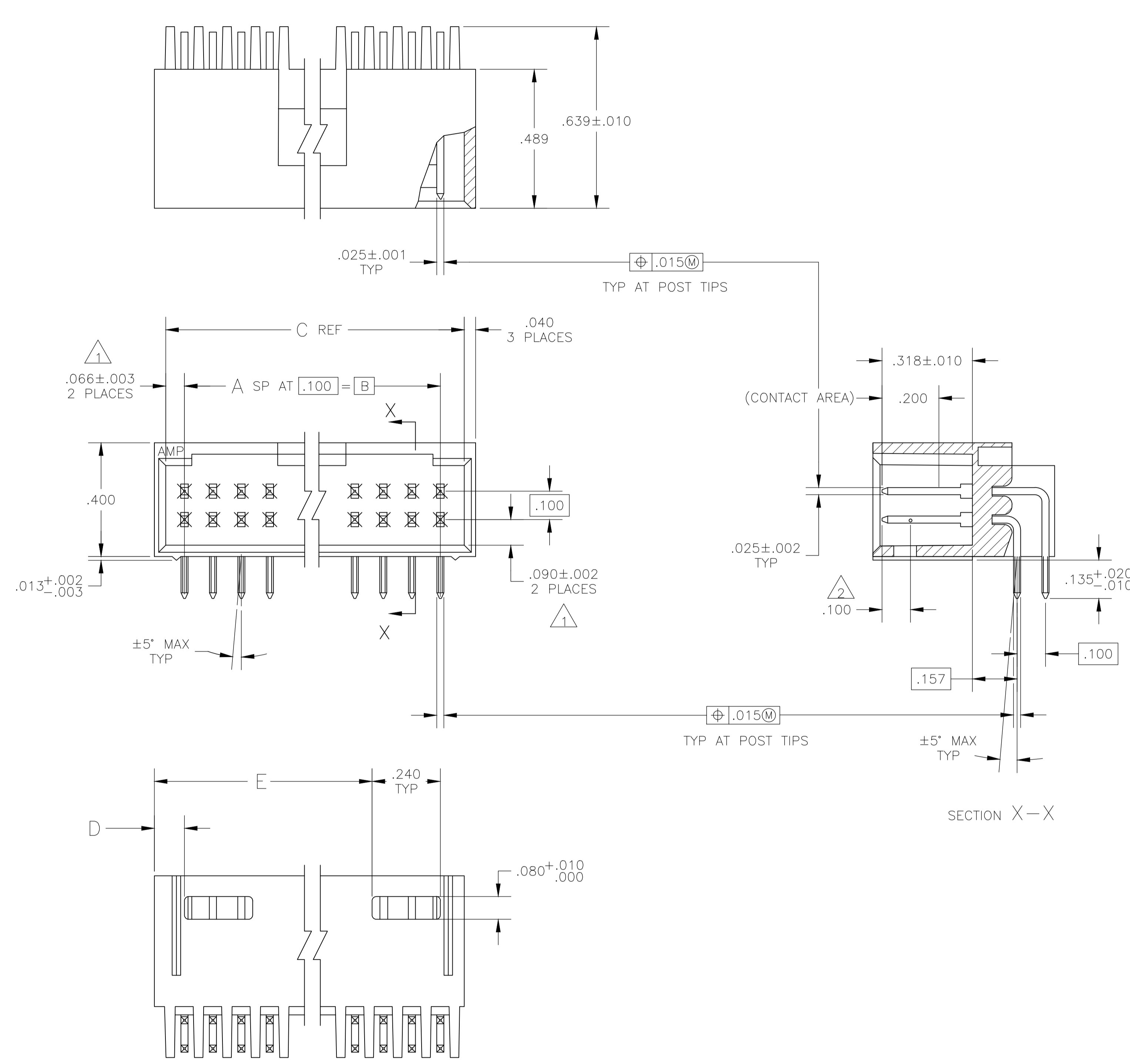


REVISIONS					
REV	DATE	BY	APPV	DESCRIPTION	DATE
J3	10AUG2018	KJK	PS	PN 7-102617-0 REACTIVATED	

- ① THE NOTED DIMENSIONS APPLY AT THE INTERSECTION OF THE POST AND HOUSING
- ② POINT OF MEASUREMENT FOR PLATING THICKNESS
- ③ .000015 GOLD IN CONTACT AREA, .000100-.000200 MATTE TIN-LEAD ON SOLDER TAIL, ALL OVER .000050 NICKEL.
- ④ .000015 GOLD IN CONTACT AREA, .000100-.000200 MATTE TIN ON SOLDER TAIL, ALL OVER .000050 NICKEL.
- ⑤ OBSOLETE PARTS: OBSOLETE CIS STREAMLINING PER D.RENAUD/D.SINISI

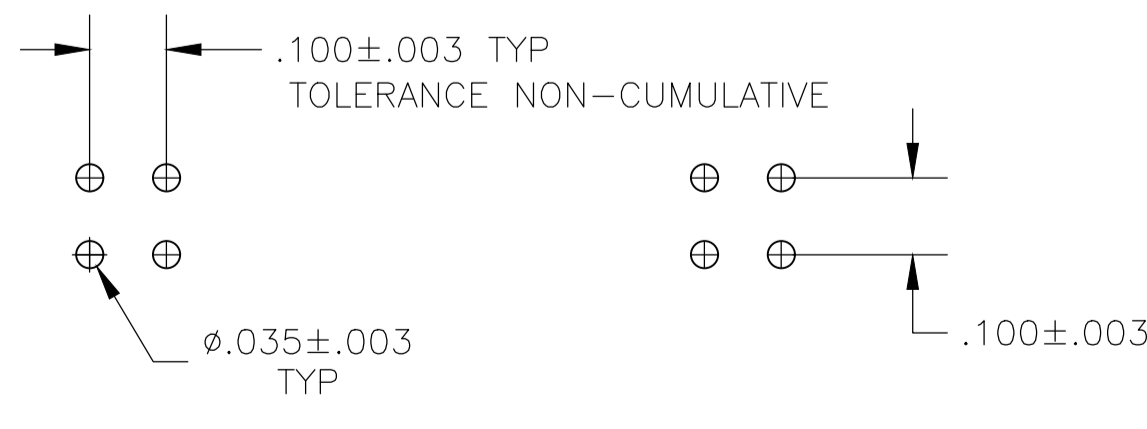


④	④	3.506	.106	3.732	3.600	36	74	⑤⑧	102617-5
④	④	3.406	.106	3.632	3.500	35	72	⑤⑧	102617-4
④	④	3.306	.106	3.532	3.400	34	70	⑤⑧	102617-3
④	④	3.206	.106	3.432	3.300	33	68	⑤⑧	102617-2
④	④	3.106	.106	3.332	3.200	32	66	⑤⑧	102617-1
④	④	3.006	.106	3.232	3.100	31	64	⑤⑧	102617-0
④	④	2.906	.106	3.132	3.000	30	62	⑤⑦	102617-9
④	④	2.806	.106	3.032	2.900	29	60	⑤⑦	102617-8
④	④	2.706	.106	2.932	2.800	28	58	⑤⑦	102617-7
④	④	2.606	.106	2.832	2.700	27	56	⑤⑦	102617-6
④	④	2.506	.106	2.732	2.600	26	54	⑤⑦	102617-5
④	④	2.406	.106	2.632	2.500	25	52	⑤⑦	102617-4
④	④	2.306	.106	2.532	2.400	24	50	⑤⑦	102617-3
④	④	2.206	.106	2.432	2.300	23	48	⑤⑦	102617-2
④	④	2.106	.106	2.332	2.200	22	46	⑤⑦	102617-1
④	④	2.006	.106	2.232	2.100	21	44	⑤⑦	102617-0
④	④	1.906	.106	2.132	2.000	20	42	⑤⑥	102617-9
④	④	1.806	.106	2.032	1.900	19	40	⑤⑥	102617-8
④	④	1.706	.106	1.932	1.800	18	38	⑤⑥	102617-7
④	④	1.606	.106	1.832	1.700	17	36	⑤⑥	102617-6
④	④	1.506	.106	1.732	1.600	16	34	⑤⑥	102617-5
④	④	1.406	.106	1.632	1.500	15	32	⑤⑥	102617-4
④	④	1.306	.106	1.532	1.400	14	30	⑤⑥	102617-3
④	④	1.206	.106	1.432	1.300	13	28	⑤⑥	102617-2
④	④	1.106	.106	1.332	1.200	12	26	⑤⑥	102617-1
④	④	1.006	.106	1.232	1.100	11	24	⑤⑥	102617-0
④	④	.906	.106	1.132	1.000	10	22	⑤⑤	102617-9
④	④	.806	.106	1.032	.900	9	20	⑤⑤	102617-8
④	④	---	.406	.932	.800	8	18	⑤⑤	102617-7
④	④	---	.306	.832	.700	7	16	⑤⑤	102617-6
④	④	---	.306	.732	.600	6	14	⑤⑤	102617-5
④	④	---	.206	.632	.500	5	12	⑤⑤	102617-4
④	④	---	.206	.532	.400	4	10	⑤⑤	102617-3
④	④	---	.106	.432	.300	3	8	⑤⑤	102617-2
④	④	---	.106	.332	.200	2	6	⑤⑤	102617-1

③	③	3.506	.106	3.732	3.600	36	74	⑤③	102617-5
③	③	3.406	.106	3.632	3.500	35	72	⑤③	102617-4
③	③	3.306	.106	3.532	3.400	34	70	⑤③	102617-3
③	③	3.206	.106	3.432	3.300	33	68	⑤③	102617-2
③	③	3.106	.106	3.332	3.200	32	66	⑤③	102617-1
③	③	3.006	.106	3.232	3.100	31	64	⑤③	102617-0
③	③	2.906	.106	3.132	3.000	30	62	⑤②	102617-9
③	③	2.806	.106	3.032	2.900	29	60	⑤②	102617-8
③	③	2.706	.106	2.932	2.800	28	58	⑤②	102617-7
③	③	2.606	.106	2.832	2.700	27	56	⑤②	102617-6
③	③	2.506	.106	2.732	2.600	26	54	⑤②	102617-5
③	③	2.406	.106	2.632	2.500	25	52	⑤②	102617-4
③	③	2.306	.106	2.532	2.400	24	50	⑤②	102617-3
③	③	2.206	.106	2.432	2.300	23	48	⑤②	102617-2
③	③	2.106	.106	2.332	2.200	22	46	⑤②	102617-1
③	③	2.006	.106	2.232	2.100	21	44	⑤②	102617-0
③	③	1.906	.106	2.132	2.000	20	42	⑤①	102617-9
③	③	1.806	.106	2.032	1.900	19	40	⑤①	102617-8
③	③	1.706	.106	1.932	1.800	18	38	⑤①	102617-7
③	③	1.606	.106	1.832	1.700	17	36	⑤①	102617-6
③	③	1.506	.106	1.732	1.600	16	34	⑤①	102617-5
③	③	1.406	.106	1.632	1.500	15	32	⑤①	102617-4
③	③	1.306	.106	1.532	1.400	14	30	⑤①	102617-3
③	③	1.206	.106	1.432	1.300	13	28	⑤①	102617-2
③	③	1.106	.106	1.332	1.200	12	26	⑤①	102617-1
③	③	1.006	.106	1.232	1.100	11	24	⑤①	102617-0
③	③	.906	.106	1.132	1.000	10	22	⑤①	102617-9
③	③	.806	.106	1.032	.900	9	20	⑤①	102617-8
③	③	---	.406	.932	.800	8	18	⑤①	102617-7
③	③	---	.306	.832	.700	7	16	⑤①	102617-6
③	③	---	.306	.732	.600	6	14	⑤①	102617-5
③	③	---	.206	.632	.500	5	12	⑤①	102617-4
③	③	---	.206	.532	.400	4	10	⑤①	102617-3
③	③	---	.106	.432	.300	3	8	⑤①	102617-2
③	③	---	.106	.332	.200	2	6	⑤①	102617-1

PLATING	E	D	C	B	A	NO OF POSN	ASSEMBLY PART NUMBER
④							
④							
④							
④							
④							
④							
④							
④							
④							
④							
④							
④							
④							
④							
④							
④							
④							
④							
④							
④							
④							
④							
④							
④							
④							
④							
④							
④							

PLATING	E	D	C	B	A	NO OF POSN	ASSEMBLY PART NUMBER
③							
③							
③							
③							
③							
③							
③							
③							
③							
③							
③							
③							
③							
③							
③							
③							
③							
③							
③							
③							
③							
③							
③							
③							
③							
③							
③							
③							
③							
③							



THIS DRAWING IS A CONTROLLED DOCUMENT.

DIMENSIONS: INCHES	TOLERANCES UNLESS OTHERWISE SPECIFIED:	DIN H MOLL 28JUL87	REV L A MAYER 29JUL87
0 PLC ± -	1 PLC ± -	APVD R FEIDT 28JUL87	NAME
2 PLC ± -	3 PLC ± .005		PRODUCT SPEC
4 PLC ± -	ANGLES ± -		APPLICATION SPEC
	FINISH SEE TABLE	SIZE CASE CODE DRAWING NO	RESTRICTED TO
MATERIAL HOUSING: FLAME-RETARDANT THERMOPLASTIC, COLOR-BLACK POSTS: BRASS	SEE TABLE	WEIGHT	A1 00779 C=102617
		CUSTOMER DRAWING	SCALE 4:1 SHEET 1 OF 1 REV J3



MOD II, HDR SHROUDED, 4 SIDES, DBL ROW, .100X.100 C/L, RT, W/.025 SQ POSTS

X-ON Electronics

Largest Supplier of Electrical and Electronic Components

Click to view similar products for [Headers & Wire Housings](#) category:

Click to view products by [TE Connectivity](#) manufacturer:

Other Similar products are found below :

[892-18-020-10-001101](#) [58102-G61-06LF](#) [582553-1](#) [0009485154](#) [009176003701906](#) [0050291907](#) [LY20-4P-DT1-P1E-BR](#) [02.125.8002.8](#)
[609-3404](#) [61062-3](#) [61082-181009](#) [622-3653LF](#) [63453-116](#) [636-1030](#) [636-1427](#) [636-3427](#) [636-4007](#) [641938-9](#) [641991-4](#) [644827-2](#) [65817-010LF](#) [65817-015LF](#) [65863-015LF](#) [66207-023LF](#) [67095-007LF](#) [67601157](#) [68645-018](#) [68648-049](#) [70.362.1628.0](#) [70-4210](#) [70-4226B](#) [70-4853B](#) [707-5020](#) [707-5028](#) [71.350.2428.0](#) [71918-208LF](#) [71961-016LF](#) [733-134](#) [733-162](#) [754199-000](#) [760-3052](#) [787-8014-00](#) [79531-3000](#)
[FCN-360C032-B](#) [FCN-367T-T012/H](#) [FCN-723D010/2](#) [80.063.4001.1](#) [800-90-001-10-001000](#) [800-90-010-10-002000](#) [801-43-002-10-013000](#)