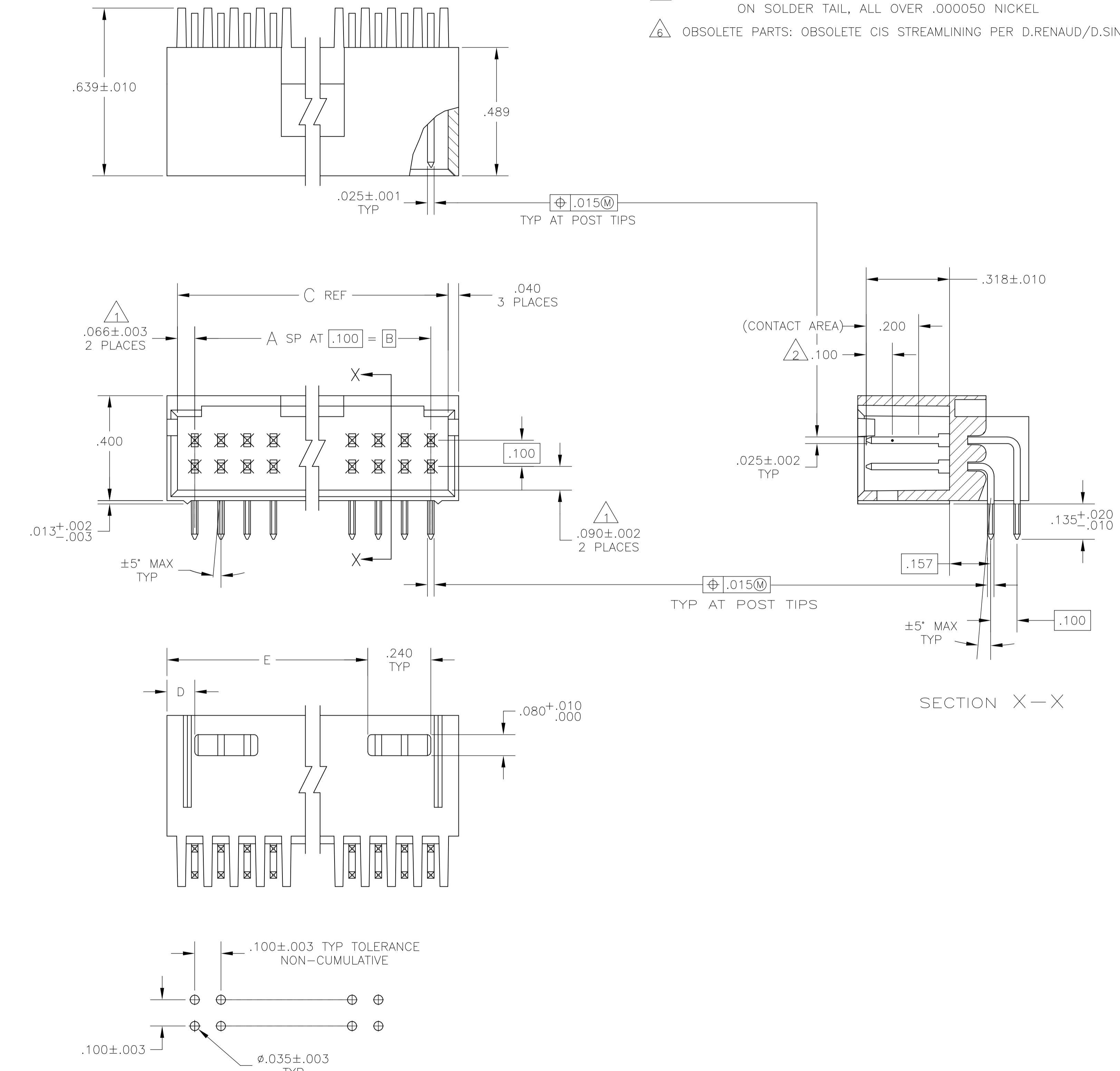


| REVISIONS |     |  |           |       |
|-----------|-----|--|-----------|-------|
| P         | LTR | DESCRIPTION                            | DATE      | APPD  |
| K3        |     | PART STATUS UPDATED IN PART LIST TABLE | 19FEB2018 | SD PS |

- 1 THE NOTED DIMENSION APPLIES AT THE INTERSECTION OF THE POST AND HOUSING
- 2 POINT OF MEASUREMENT FOR PLATING THICKNESS.
- 3 PACKAGED IN SINGLE TUBES
- 4 POSTS: .000030 GOLD IN CONTACT AREA .000100-.000200 MATTE TIN LEAD ON SOLDER TAIL, ALL OVER .000050 NICKEL
- 5 POSTS: .000030 GOLD IN CONTACT AREA .000100-.000200 MATTE TIN ON SOLDER TAIL, ALL OVER .000050 NICKEL
- 6 OBSOLETE PARTS: OBSOLETE CIS STREAMLINING PER D.RENAUD/D.SINISI



| PLATING | E | D | C | B | A | NO OF POSN | ASSEMBLY PART NUMBER |
|---------|---|---|---|---|---|------------|----------------------|
| 6       | 3 | 6 | 6 | 6 | 6 | 2          | 8-103166-6           |
| 6       | 3 | 6 | 6 | 6 | 6 | 36         | 8-103166-5           |
| 6       | 3 | 6 | 6 | 6 | 6 | 35         | 8-103166-4           |
| 6       | 3 | 6 | 6 | 6 | 6 | 34         | 8-103166-3           |
| 6       | 3 | 6 | 6 | 6 | 6 | 33         | 8-103166-2           |
| 6       | 3 | 6 | 6 | 6 | 6 | 32         | 8-103166-1           |
| 6       | 3 | 6 | 6 | 6 | 6 | 31         | 8-103166-0           |
| 6       | 3 | 6 | 6 | 6 | 6 | 30         | 7-103166-9           |
| 6       | 3 | 6 | 6 | 6 | 6 | 29         | 7-103166-8           |
| 6       | 3 | 6 | 6 | 6 | 6 | 28         | 7-103166-7           |
| 6       | 3 | 6 | 6 | 6 | 6 | 27         | 7-103166-6           |
| 6       | 3 | 6 | 6 | 6 | 6 | 26         | 7-103166-5           |
| 6       | 3 | 6 | 6 | 6 | 6 | 25         | 7-103166-4           |
| 6       | 3 | 6 | 6 | 6 | 6 | 24         | 7-103166-3           |
| 6       | 3 | 6 | 6 | 6 | 6 | 23         | 7-103166-2           |
| 6       | 3 | 6 | 6 | 6 | 6 | 22         | 7-103166-1           |
| 6       | 3 | 6 | 6 | 6 | 6 | 21         | 7-103166-0           |
| 6       | 3 | 6 | 6 | 6 | 6 | 20         | 6-103166-9           |
| 6       | 3 | 6 | 6 | 6 | 6 | 19         | 6-103166-8           |
| 6       | 3 | 6 | 6 | 6 | 6 | 18         | 6-103166-7           |
| 6       | 3 | 6 | 6 | 6 | 6 | 17         | 6-103166-6           |
| 6       | 3 | 6 | 6 | 6 | 6 | 16         | 6-103166-5           |
| 6       | 3 | 6 | 6 | 6 | 6 | 15         | 6-103166-4           |
| 6       | 3 | 6 | 6 | 6 | 6 | 14         | 6-103166-3           |
| 6       | 3 | 6 | 6 | 6 | 6 | 13         | 6-103166-2           |
| 6       | 3 | 6 | 6 | 6 | 6 | 12         | 6-103166-1           |
| 6       | 3 | 6 | 6 | 6 | 6 | 11         | 6-103166-0           |
| 6       | 3 | 6 | 6 | 6 | 6 | 10         | 5-103166-9           |
| 6       | 3 | 6 | 6 | 6 | 6 | 9          | 5-103166-8           |
| 6       | 3 | 6 | 6 | 6 | 6 | 8          | 5-103166-7           |
| 6       | 3 | 6 | 6 | 6 | 6 | 7          | 5-103166-6           |
| 6       | 3 | 6 | 6 | 6 | 6 | 6          | 5-103166-5           |
| 6       | 3 | 6 | 6 | 6 | 6 | 5          | 5-103166-4           |
| 6       | 3 | 6 | 6 | 6 | 6 | 4          | 5-103166-3           |
| 6       | 3 | 6 | 6 | 6 | 6 | 3          | 5-103166-2           |
| 6       | 3 | 6 | 6 | 6 | 6 | 2          | 5-103166-1           |
| 3       | 6 | 6 | 6 | 6 | 6 | 2          | 3-103166-6           |
| 6       | 3 | 6 | 6 | 6 | 6 | 36         | 3-103166-5           |
| 6       | 3 | 6 | 6 | 6 | 6 | 35         | 3-103166-4           |
| 6       | 3 | 6 | 6 | 6 | 6 | 34         | 3-103166-3           |
| 6       | 3 | 6 | 6 | 6 | 6 | 33         | 3-103166-2           |
| 6       | 3 | 6 | 6 | 6 | 6 | 32         | 3-103166-1           |
| 6       | 3 | 6 | 6 | 6 | 6 | 31         | 3-103166-0           |
| 6       | 3 | 6 | 6 | 6 | 6 | 30         | 2-103166-9           |
| 6       | 3 | 6 | 6 | 6 | 6 | 29         | 2-103166-8           |
| 6       | 3 | 6 | 6 | 6 | 6 | 28         | 2-103166-7           |
| 6       | 3 | 6 | 6 | 6 | 6 | 27         | 2-103166-6           |
| 6       | 3 | 6 | 6 | 6 | 6 | 26         | 2-103166-5           |
| 6       | 3 | 6 | 6 | 6 | 6 | 25         | 2-103166-4           |
| 6       | 3 | 6 | 6 | 6 | 6 | 24         | 2-103166-3           |
| 6       | 3 | 6 | 6 | 6 | 6 | 23         | 2-103166-2           |
| 6       | 3 | 6 | 6 | 6 | 6 | 22         | 2-103166-1           |
| 6       | 3 | 6 | 6 | 6 | 6 | 21         | 2-103166-0           |
| 6       | 3 | 6 | 6 | 6 | 6 | 20         | 1-103166-9           |
| 6       | 3 | 6 | 6 | 6 | 6 | 19         | 1-103166-8           |
| 6       | 3 | 6 | 6 | 6 | 6 | 18         | 1-103166-7           |
| 6       | 3 | 6 | 6 | 6 | 6 | 17         | 1-103166-6           |
| 6       | 3 | 6 | 6 | 6 | 6 | 16         | 1-103166-5           |
| 6       | 3 | 6 | 6 | 6 | 6 | 15         | 1-103166-4           |
| 6       | 3 | 6 | 6 | 6 | 6 | 14         | 1-103166-3           |
| 6       | 3 | 6 | 6 | 6 | 6 | 13         | 1-103166-2           |
| 6       | 3 | 6 | 6 | 6 | 6 | 12         | 1-103166-1           |
| 6       | 3 | 6 | 6 | 6 | 6 | 11         | 1-103166-0           |
| 6       | 3 | 6 | 6 | 6 | 6 | 10         | 103166-9             |
| 6       | 3 | 6 | 6 | 6 | 6 | 9          | 103166-8             |
| 6       | 3 | 6 | 6 | 6 | 6 | 8          | 103166-7             |
| 6       | 3 | 6 | 6 | 6 | 6 | 7          | 103166-6             |
| 6       | 3 | 6 | 6 | 6 | 6 | 6          | 103166-5             |
| 6       | 3 | 6 | 6 | 6 | 6 | 5          | 103166-4             |
| 6       | 3 | 6 | 6 | 6 | 6 | 4          | 103166-3             |
| 6       | 3 | 6 | 6 | 6 | 6 | 3          | 103166-2             |
| 6       | 3 | 6 | 6 | 6 | 6 | 2          | 103166-1             |

RECOMMENDED HOLE LAYOUT

THIS DRAWING IS A CONTROLLED DOCUMENT.

|  |  |                         |               |
|--|--|-------------------------|---------------|
| DIMENSIONS:  | TOLERANCES UNLESS OTHERWISE SPECIFIED: | DRAWN: H MOLL 27AUG87   | DATE: 27AUG87 |
| INCHES:  | 0 PLC ± .005                           | CHK: R FEIDT 28AUG87    | DATE: 28AUG87 |
|  | 1 PLC ± .005                           | APVD: R FLICKER 29AUG87 | DATE: 29AUG87 |
|  | 2 PLC ± .005                           | NAME:                   |               |
|  | 3 PLC ± .005                           | PRODUCT SPEC:           |               |
|  | 4 PLC ± .005                           | APPLICATION SPEC:       |               |
|  | ANGLES ± .005                          | SIZE:                   |               |
| MATERIAL: HOUSING: PLATE RETARDANT THERMOPLASTIC; COLOR: BLACK; POSTS: PHOS BRONZE | FINISH: SEE TABLE                      | WEIGHT:                 |               |
|  |  | CUSTOMER DRAWING:       |               |

STE TE Connectivity

HDR ASSY, MOD II, SHROUDED, 4 SIDES, DBL ROW, .100X.100 WITH .025 SQ POSTS

SCALE: 4:1 SHEET 1 OF 1 REV: K3

## X-ON Electronics

Largest Supplier of Electrical and Electronic Components

*Click to view similar products for [Headers & Wire Housings](#) category:*

*Click to view products by [TE Connectivity](#) manufacturer:*

Other Similar products are found below :

[892-18-020-10-001101](#) [58102-G61-06LF](#) [582553-1](#) [0009485154](#) [009176003701906](#) [0050291907](#) [LY20-4P-DT1-P1E-BR](#) [02.125.8002.8](#)  
[609-3404](#) [61062-3](#) [61082-181009](#) [622-3653LF](#) [63453-116](#) [636-1030](#) [636-1427](#) [636-3427](#) [636-4007](#) [641938-9](#) [641991-4](#) [644827-2](#) [65817-010LF](#) [65817-015LF](#) [65863-015LF](#) [66207-023LF](#) [67095-007LF](#) [67601157](#) [68645-018](#) [68648-049](#) [70.362.1628.0](#) [70-4210](#) [70-4226B](#) [70-4853B](#) [707-5020](#) [707-5028](#) [71.350.2428.0](#) [71918-208LF](#) [71961-016LF](#) [733-134](#) [733-162](#) [754199-000](#) [760-3052](#) [787-8014-00](#) [79531-3000](#)  
[FCN-360C032-B](#) [FCN-367T-T012/H](#) [FCN-723D010/2](#) [80.063.4001.1](#) [800-90-001-10-001000](#) [800-90-010-10-002000](#) [801-43-002-10-013000](#)