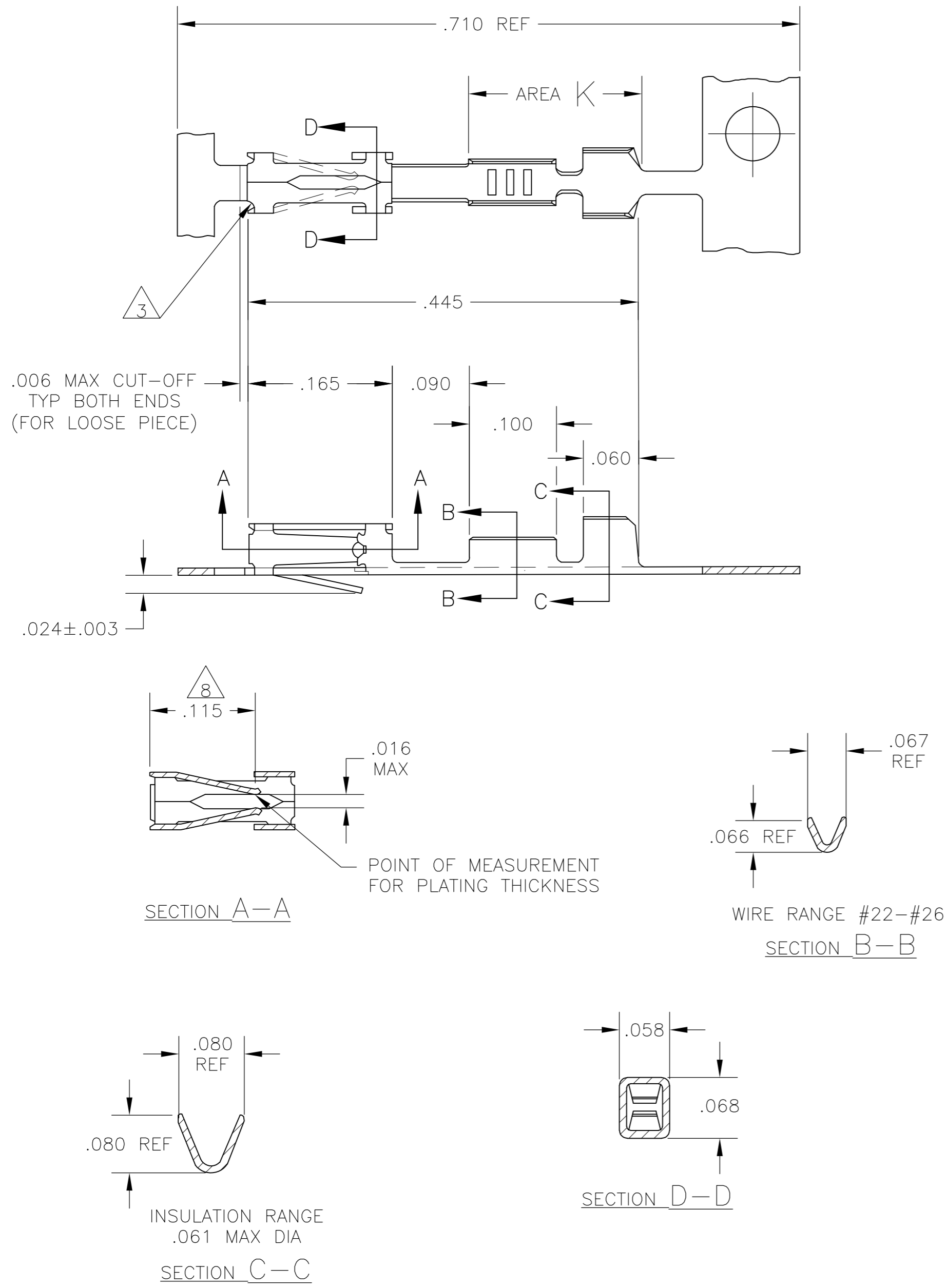


THIS DRAWING IS UNPUBLISHED. RELEASED FOR PUBLICATION  
 © COPYRIGHT - By - ALL RIGHTS RESERVED.

| LOC | DIST | REVISIONS                 |         |     |      |
|-----|------|---------------------------|---------|-----|------|
| P   | LTR  | DESCRIPTION               | DATE    | DWN | APVD |
| AD  | 00   |                           |         |     |      |
|     | J2   | REVISED PER ECO-11-004820 | 11MAR11 | RK  | HMR  |



1. REELED FOR MINI APPLICATOR.
3. CUT OUTS ON BOX AT MANUFACTURER'S OPTION.
4. .000015 GOLD ON CONTACT AREA, .000100-.000200 BRIGHT TIN OR BRIGHT TIN-LEAD IN CRIMP AREA K, ALL OVER .000050 NICKEL.
5. .000030 GOLD ON CONTACT AREA, .000100-.000200 BRIGHT TIN OR BRIGHT TIN-LEAD IN CRIMP AREA K, ALL OVER .000050 NICKEL.
6. SHEARED EDGES PERMITTED TO BE UNPLATED.
7. .000100-.000200 BRIGHT TIN-LEAD OVER .000030 NICKEL.
8. POINT OF MEASUREMENT FOR PLATING THICKNESS (INSIDE BEAMS)
9. OBSOLETE PART NUMBER
10. SUPERCEDED BY 103171-5.
11. .000015 GOLD ON CONTACT AREA, MATTE TIN IN CRIMP AREA K, ALL OVER .000050 NICKEL.
12. .000030 GOLD ON CONTACT AREA, MATTE TIN IN CRIMP AREA K, ALL OVER .000050 NICKEL.
13. OBSOLETE PARTS: OBSOLETE CIS STREAMLINING PER D.RENAUD/D.SINISI

|                     |        |             |
|---------------------|--------|-------------|
| 5-103171-5          | 12 6   | 5-103171-4  |
| 13 5-103171-2       | 11 6   | 5-103171-1  |
| 9 -8                | 6 7    | 9 -7        |
| 103171-5            | 5 6    | 103171-4    |
| 103171-2            | 4 6    | 103171-1    |
| LOOSE PIECE PART NO | FINISH | PART NUMBER |

|                                        |  |                  |                                   |                                                                  |           |
|----------------------------------------|--|------------------|-----------------------------------|------------------------------------------------------------------|-----------|
| THIS DRAWING IS A CONTROLLED DOCUMENT. |  | DWN              | 31 MAR 83                         | <b>STE</b> TE Connectivity                                       |           |
| DIMENSIONS: INCHES                     |  | CHK              | -                                 |                                                                  |           |
| TOLERANCES UNLESS OTHERWISE SPECIFIED: |  | APVD             | 11 APR 83                         | NAME                                                             |           |
| 0 PLC ± -                              |  | PRODUCT SPEC     | -                                 | CONTACT, RECEPTACLE, MOD IV 1/2 CRIMP SNAP-IN FOR 22-26 AWG WIRE |           |
| 1 PLC ± -                              |  | APPLICATION SPEC | -                                 | SIZE                                                             | CAGE CODE |
| 2 PLC ± -                              |  | FINISH           | SEE TABLE                         | A2                                                               | 00779     |
| 3 PLC ± .005                           |  | MATERIAL         | CU-SN-P ALLOY 521 .008 THK. COML. | DRAWING NO                                                       | C=103171  |
| 4 PLC ± -                              |  | WEIGHT           | -                                 | RESTRICTED TO                                                    | -         |
| ANGLES ± -                             |  | CUSTOMER DRAWING | SCALE 8:1                         | SHEET 1 of 1                                                     | REV J2    |

## X-ON Electronics

Largest Supplier of Electrical and Electronic Components

*Click to view similar products for [Headers & Wire Housings](#) category:*

*Click to view products by [TE Connectivity](#) manufacturer:*

Other Similar products are found below :

[892-18-020-10-001101](#) [58102-G61-06LF](#) [582553-1](#) [0009485154](#) [009176003701906](#) [0050291907](#) [LY20-4P-DT1-P1E-BR](#) [02.125.8002.8](#)  
[609-3404](#) [61062-3](#) [61082-181009](#) [622-3653LF](#) [63453-116](#) [636-1030](#) [636-1427](#) [636-3427](#) [636-4007](#) [641938-9](#) [641991-4](#) [644827-2](#) [65817-](#)  
[010LF](#) [65817-015LF](#) [65863-015LF](#) [66207-023LF](#) [67095-007LF](#) [67601157](#) [68645-018](#) [68648-049](#) [70.362.1628.0](#) [70-4210](#) [70-4226B](#) [70-](#)  
[4853B](#) [707-5020](#) [707-5028](#) [71.350.2428.0](#) [71918-208LF](#) [71961-016LF](#) [733-134](#) [733-162](#) [754199-000](#) [760-3052](#) [79531-3000](#) [FCN-](#)  
[360C032-B](#) [FCN-367T-T012/H](#) [FCN-723D010/2](#) [80.063.4001.1](#) [800-90-010-10-002000](#) [801-43-002-10-013000](#) [801-43-006-10-002000](#)  
[801-93-011-10-001000](#)