

**Terminal Strips, Four-Fingered Contact**

**500 Series**



510AG91D08ESL

**FEATURES:**

- Available in strips of 1 to 20
- Breakaway feature for breaking strips into any desired shorter lengths (no special tooling required)
- Contact features closed end construction eliminating any solder or flux wicking problems
- Two-piece tapered entry closed entry inner contact and outer sleeve
- Accepts any IC lead and component leads .016" - .021" (0.41 - 0.53) dia. .105" (2.67) minimum length
- Uses: microprocessor sockets, hybrid IC sockets, Q.I.L. sockets, component sockets and test points
- Machined (Premium Series) and stamped (Economy Series) contacts are available

**APPLICATION DIMENSIONS:**

- PCB Thickness Range: Standard .062" and .092" (1.57 and 2.34)
- PCB Hole Size Range: .035" ± .003" (0.89 ± 0.08) PC tail, .055" ± .003" (1.40 ± 0.08) Solderless wrap
- IC Pin Dimension Range: .009" x .015" (0.23 x 0.38) through .011" x .020" (0.28 x 0.51) .016" x .021" (0.41 x 0.53) round lead .105" (2.67) min. length

**MATERIAL SPECIFICATIONS:**

Insulator.....Thermoplastic polyester. UL rated 94V-0  
 Inner Contact.....Beryllium copper, gold or tin/lead plated  
 Sleeve .....Brass, gold or tin/lead plated

**PART NUMBERS**

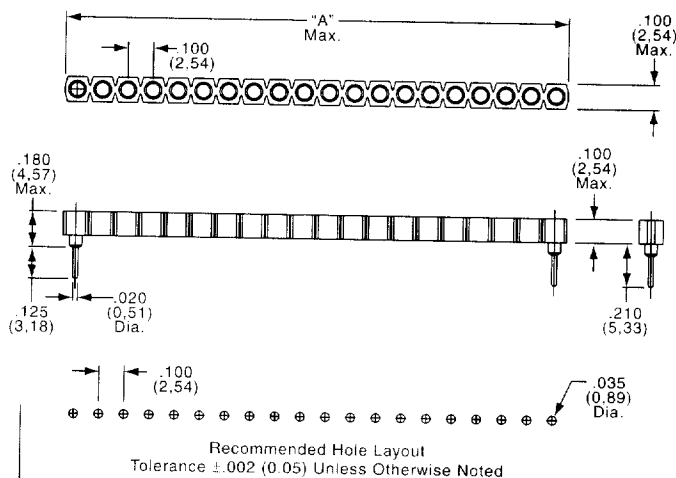
Economy Series	Premium Series	Number of Contacts	Contact Plating	Sleeve Plating	Dim. A
510AG90D10ES	510-AG90D-10	10	Gold	Gold	1.000 (25.40)
510AG90D10ESL			Low Gold	Gold	
510AG91D10ES	510-AG91D-10		Gold	Tin/Lead	
510AG91D10ESL			Low Gold	Tin/Lead	
510AG92D10ES	510-AG92D-10	20	Tin/Lead	Tin/Lead	2.000 (50.80)
510AG90D20ES	510-AG90D-20		Gold	Gold	
510AG90D20ESL			Low Gold	Gold	
510AG91D20ES	510-AG91D-20		Gold	Tin/Lead	
510AG91D20ESL		Low Gold	Tin/Lead		
510AG92D20ES	510-AG92D-20		Tin/Lead	Tin/Lead	

For sizes not shown or for wire-wrap termination, please consult Tyco Electronics.

**ECONOMY AND PREMIUM SERIES - .180 PC TAIL PINS**

510-AG45D-XX, 510AG45DXXES(L) - Gold Contact, Gold Sleeve  
 510-AG44D-XX, 510AG44DXXES(L) - Gold Contact, Tin/Lead Sleeve  
 510-AG42D-XX, 510AG42DXXES(L) - Tin/Lead Contact, Tin/Lead Sleeve

**Note:** Before ordering, see Cross Reference in Section 15 for equivalent Tyco Electronics Part Number.



**PERFORMANCE SPECIFICATIONS:**

**MECHANICAL**

- Vibration .....Passed MIL-STD-1344, Method 2005.1, Condition II, 10 G's
- Shock .....Passed MIL-STD-1344, Method 2004.1, Condition C, 100 G's
- Durability .....Passed MIL-STD-1344, Method 2016
- Normal Force .....125 Grams (4.4 oz.) average with .018" (0.46) dia. polished steel pin (Premium Series)  
 200 Grams (7.1 oz.) average with .018" (0.46) dia. polished steel pin (Economy Series)
- Inner Contact Retention ..  
 in Sleeve .....7.5 Lbs. per line average
- Sleeve Retention  
 in Plastic .....3.0 Lbs. per line minimum
- Solderability .....Passed MIL-STD-202F, Method 208
- Insertion Force .....Premium - 134 Grams (4.7 oz.) average with a .018" (0.46) dia. polished steel pin  
 Economy - 179 Grams (6.3 oz.) average with a .018" (0.46) dia. polished steel pin
- Withdrawal Force .....63 Grams (2.2 oz.) average with a .018" (0.46) dia. polished steel pin

**ELECTRICAL**

- Contact Resistance .....10 Milliohms max.
- Contact Rating.....3 Amps
- Capacitance .....1.0 pF per MIL-STD-202, Method 305 (contact to contact)
- Insulation Resistance.....5,000 Megohms min. @ 500 VDC per MIL-STD-1344, Method 3003.1
- Dielectric Withstanding  
 Voltage .....1,000 Volts RMS per MIL-STD-1344, Method 3001.1

**ENVIRONMENTAL**

- Humidity .....Passed MIL-STD-1344, Method 1002.2, Cond. II
- Thermal Shock .....Passed MIL-STD-1344, Method 1003.1, Cond. A
- Operation Temperature ....Gold inner contact -55°C to +125°C  
 Tin/lead inner contact -55°C to +105°C

## X-ON Electronics

Largest Supplier of Electrical and Electronic Components

*Click to view similar products for IC & Component Sockets category:*

*Click to view products by TE Connectivity manufacturer:*

Other Similar products are found below :

[714-43-102-31-012000](#) [0066-3-17-15-30-14-02-0](#) [0134-0-15-15-32-27-04-0](#) [614-DG5](#) [6527-0-00-15-00-00-03-0](#) [670](#) [672](#) [673](#) [712-93-120-41-001000](#) [714-93-104-31-018000](#) [8059-4G1-LF](#) [807-22-001-10-001101](#) [807-22-001-10-003101](#) [807-22-001-10-004101](#) [807-22-001-10-006101](#) [807-22-001-30-011101](#) [807-22-001-30-012101](#) [807-22-001-30-013101](#) [807-22-001-30-014101](#) [8-1437531-4](#) [8150-6P10](#) [833-93-034-10-001000](#) [835-43-014-10-001000](#) [851-41-006-10-001000](#) [851-43-008-20-001000](#) [851-43-014-20-001000](#) [851-93-006-20-001000](#) [851-93-010-20-001000](#) [853-43-020-10-001000](#) [86.010.0053.0](#) [116-43-306-41-003000](#) [116-43-308-41-007000](#) [PX-68LCC](#) [PX-84LCC](#) [121-13-318-41-001000](#) [121-13-320-41-001000](#) [121-13-308-41-001000](#) [123-43-314-41-801000](#) [123-43-420-41-001000](#) [123-43-636-41-001000](#) [123-87-320-41-001101](#) [122-13-316-41-001000](#) [123-13-624-41-001000](#) [123-43-306-41-001000](#) [123-43-322-41-801000](#) [123-43-428-41-001000](#) [123-43-624-41-001000](#) [12-3513-11](#) [123-91-320-41-001000](#) [126-43-310-41-002000](#)