

**Power Relay 430**

- 1 pole 16A or 2 pole 10A in form A (NO), form B (NC) and form C (CO) versions
- DC and AC coil
- 4kV/8mm coil-contact
- PCB mounting or quick connect terminals
- Mounting brackets or snap mounting
- WG version: product in accordance to IEC 60335-1



Typical applications  
Motors, electro valves.

**Approvals**

VDE REG.-Nr. C820, UL E214025  
Technical data of approved types on request.

Contact Data	1 pole	2 pole
Contact arrangement	1 form A (NO) 1 form B (NC) 1 form C (CO)	2 form A (2 NO) 2 form B (2 NC) 2 form C (2 CO)
Rated voltage	250VAC	250VAC
Max. switching voltage	400VAC	400VAC
Rated current	16A	6A
Limiting making current, max 4 s, duty factor 10%	25A	15A
Breaking capacity max.	4000VA	2500VA
Contact material	AgCu3	
Frequency of operation, with/without load	900/36000h-1	

**Contact ratings**

Type	Contact	Load	Cycles
<b>IEC 61810</b>			
0430 .6 .. 03	C (CO)	16A, 250VAC, cosφ=1, 70°C	50x10 <sup>3</sup>
0430 07 .. 04	2 A (2 NO)	10A, 250VAC, cosφ=1, 70°C	50x10 <sup>3</sup>
0430 07 .. 06	2 C (2 CO)	10A, 250VAC, cosφ=1, 70°C	50x10 <sup>3</sup>
0430 .7 .. 04	2 A (2 NO)	6A, 250VAC, cosφ=1, 105°C	50x10 <sup>3</sup>
0430 .7 .. 06	2 C (2 CO)	6A, 250VAC, cosφ=1, 105°C	50x10 <sup>3</sup>

**Mechanical endurance**

DC coil	>250x10 <sup>3</sup> operations
AC coil	>250x10 <sup>3</sup> operations

**Coil Data**

Coil voltage range	
DC coil	6 to 110VDC
AC coil	6 to 240VAC
Operative range, IEC 61810	2

**Coil versions, DC coil**

Coil code	Rated voltage VDC	Operate voltage VDC	Release voltage VDC	Coil resistance Ω±10%	Rated coil power mW
9	12	7.8	0.6	145	993
10	24	15.6	1.2	580	993
11	48	31.2	2.4	2200	1047
13	110	71.5	5.5	13000	931

**Coil versions, AC coil, 50Hz**

Coil code	Rated voltage VAC	Operate voltage VAC	Release voltage VAC	Coil resistance Ω±10%	Rated coil power VA
03	24	18	3.6	200	1.8
05	60	45	9.0	1250	1.8
06	110	83	16.0	4500	1.8
07	230	170	35.0	17500	1.8

All figures are given for coil without pre-energization, at ambient temperature +23°C, 50Hz. Other coil voltages on request.

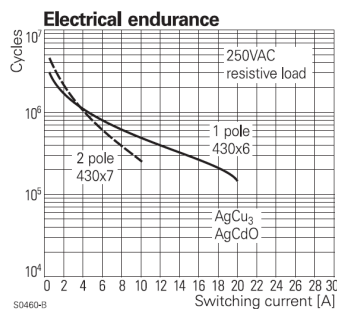
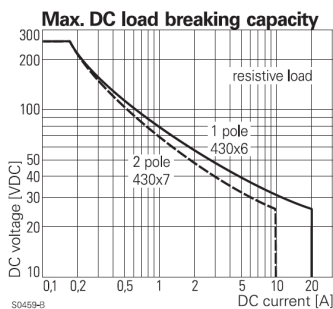
**Insulation Data**

Initial dielectric strength	
between open contacts	1000V <sub>rms</sub>
between contact and coil	4000V <sub>rms</sub>
Clearance/creepage	
between contact and coil	≥8/8mm
between adjacent contacts	≥3/4mm
Material group of insulation parts	IIIa
Tracking index of relay base	PTI250

**Other Data**

Material compliance: EU RoHS/ELV, China RoHS, REACH, Halogen content refer to the Product Compliance Support Center at [www.te.com/customer-support/rohssupportcenter](http://www.te.com/customer-support/rohssupportcenter)

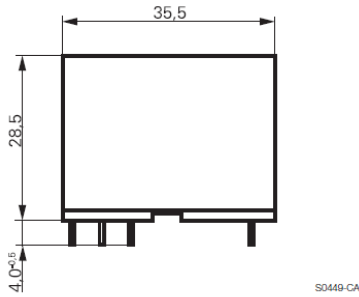
Resistance to heat and fire	according EN60335, par.30
Ambient temperature	-20 to +70°C
Category of environmental protection	
IEC 61810	RT1 - dust protected
Terminal type	PCB-THT, quick connect
Mounting	PCB, mounting brackets, snap mounting, DIN rail
Weight	32g
Resistance to soldering heat THT	
IEC 60068-2-20	270°C/10s
Packaging unit	50 pcs.



**Power Relay 430** (Continued)

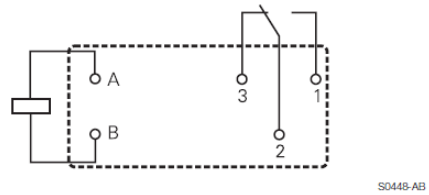
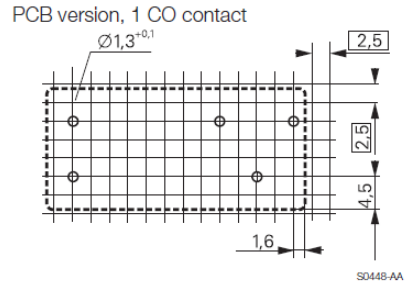
**Dimensions**

PCB mounting

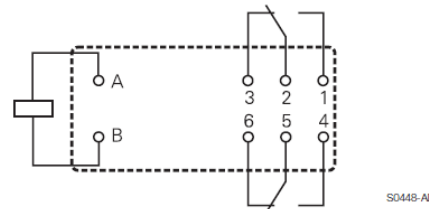
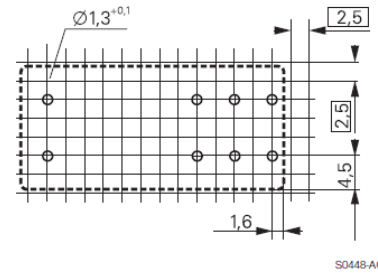


**PCB layout / terminal assignment**

Bottom view on solder pins

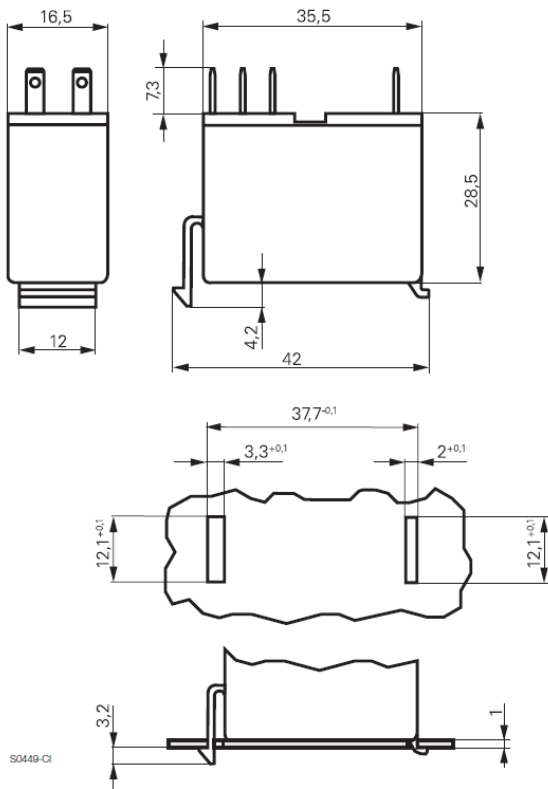


PCB version, 2 CO contacts



**Dimensions**

Snap mounting



**Power Relay 430** (Continued)

<b>Product code structure</b>		Typical product code		<b>0430</b>	<b>1</b>	<b>6</b>	<b>09</b>	<b>0</b>	<b>1</b>	<b>00</b>
<b>Type</b>		0430		Power relay 430						
<b>Mounting</b>		0 PCB version		2 Snap mounting						
		1 Mounting brackets		5 DIN-rail mounting						
<b>Version</b>		6 1 pole		7 2 pole						
<b>Coil</b>		Coil code: please refer to coil versions table								
<b>Contact material</b>		0 AgCu3								
<b>Contact configuration</b>		1 1 form A contact (1 NO)		4 2 form A contacts (2 NO)						
		2 1 form B contacts (1 NC)		5 2 form B contacts (2 NC)						
		3 1 form C contact (1 CO)		6 2 form C contacts (2 CO)						
<b>Version</b>		00 Standard								
		00WG Product in accordance with IEC 60335-1 (domestic appliances) only available on request								

Other types on request.

Product code	Mounting	Cont. material	Cont. arrangement	Coil	Part Number
0430 16 1301 00	Mounting brackets	AgCu3	1 form A (1 NO)	DC coil	2-1415901-1
0430 16 1003 00			1 form C (1 CO)		8-1415430-2
0430 16 1103 00					4-1415902-1
0430 17 1006 00			2 form C (2 CO)		1415404-3
0430 26 0703 00	Snap mounting		1 form C (1 CO)	AC coil	2-1415404-1
0430 27 0706 00	1.0mm plate		2 form C (2 CO)		7-1415530-1

## X-ON Electronics

Largest Supplier of Electrical and Electronic Components

*Click to view similar products for [General Purpose Relays](#) category:*

*Click to view products by [TE Connectivity](#) manufacturer:*

Other Similar products are found below :

[APF30318](#) [JVN1AF-4.5V-F](#) [PCN-105D3MHZ](#) [5JO-10000S-SIL](#) [5JO-1000CD-SIL](#) [5JO-400CD-SIL](#) [LY2S-AC220/240](#) [LYQ20DC12](#)  
[6031007G](#) [6131406HQ](#) [6-1393099-3](#) [6-1393099-8](#) [6-1393122-4](#) [6-1393123-2](#) [6-1393767-1](#) [6-1393843-7](#) [6-1415012-1](#) [6-1419102-2](#) [6-](#)  
[1423698-4](#) [6-1608051-6](#) [6-1608067-0](#) [6-1616170-6](#) [6-1616248-2](#) [6-1616282-3](#) [6-1616348-2](#) [6-1616350-1](#) [6-1616350-8](#) [6-1616358-7](#) [6-](#)  
[1616359-9](#) [6-1616360-9](#) [6-1616931-6](#) [6-1617039-1](#) [6-1617052-1](#) [6-1617090-2](#) [6-1617090-5](#) [6-1617347-5](#) [6-1617353-3](#) [6-1617801-8](#) [6-](#)  
[1617802-2](#) [6-1618107-9](#) [6-1618248-4](#) [M83536/1-027M](#) [CX-4014](#) [MAHC-5494](#) [MAVCD-5419-6](#) [703XCX-120A](#) [7-1393100-5](#) [7-1393111-7](#)  
[7-1393144-5](#) [7-1393767-8](#)