

THIS DRAWING IS UNPUBLISHED. RELEASED FOR PUBLICATION
 © COPYRIGHT - By - ALL RIGHTS RESERVED.

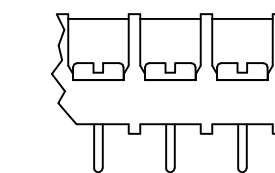
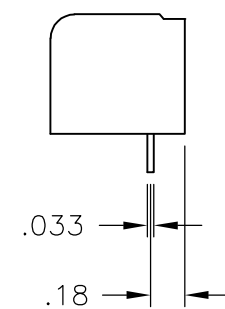
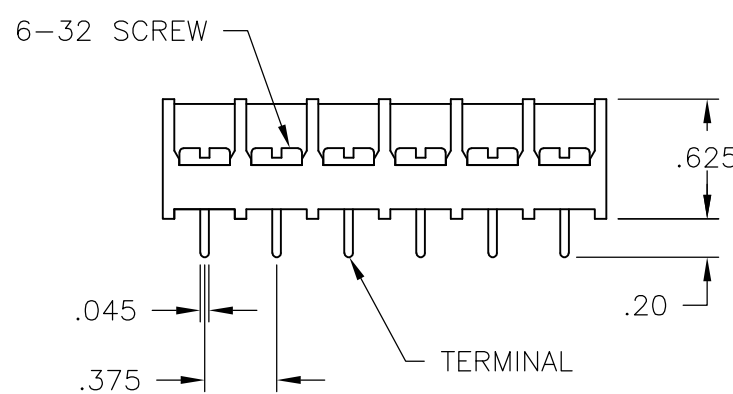
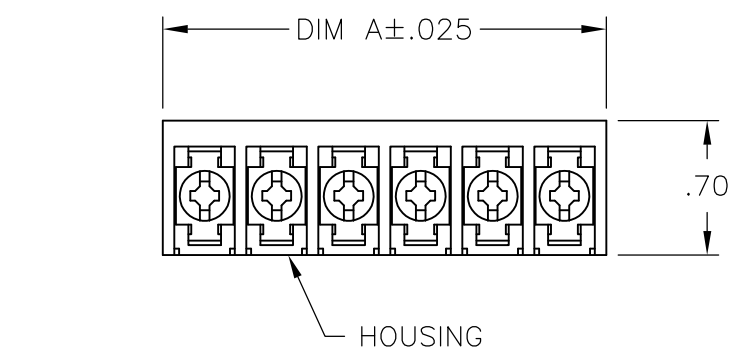
| LOC | DIST | REVISIONS | | | | | |
|-----|------|-----------|-----|---------------------------|---------|-----|------|
| FT | 0 | P | LTR | DESCRIPTION | DATE | DWN | APVD |
| | | C4 | | REVISED PER ECO-11-014078 | 12JUL11 | HMR | CR |

MATERIAL:
 HOUSING: THERMOPLASTIC, UL94V-0 BLACK.
 TERMINALS: BRIGHT TIN PLATED, COPPER ALLOY.
 SCREWS: 6-32, STEEL, ZINC PLATED WITH CLEAR CHROMATE.
 UNLESS OTHERWISE NOTED.

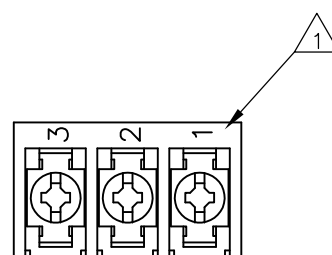
ELECTRICAL:
 RATED CURRENT UL/CSA:
 CLASS C: 25A, 300V.
 CLASS D: 5A, 600V.
 WIRE RANGE: 12-22 AWG

MECHANICAL:
 RECOMMENDED TIGHTENING TORQUE: 7 IN.-LBS.
 OPERATING TEMP.: 105°C MAX

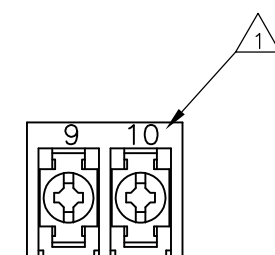
- 1 MARK WITH WHITE PERMANENT INK.
- 2 ALL SCREWS TO BE DRIVEN DOWN TO TERMINAL SURFACE.
- 3 STAINLESS STEEL SCREWS.
- 4 NICKEL PLATED BRASS SCREWS.
- 5 PRELIMINARY PART NUMBER.



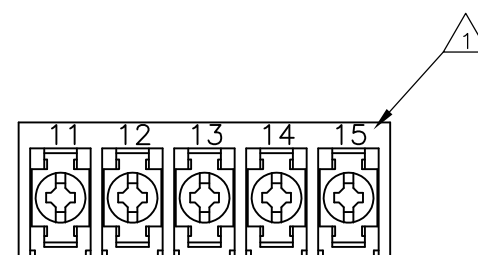
SEE TABLE FOR P/N's



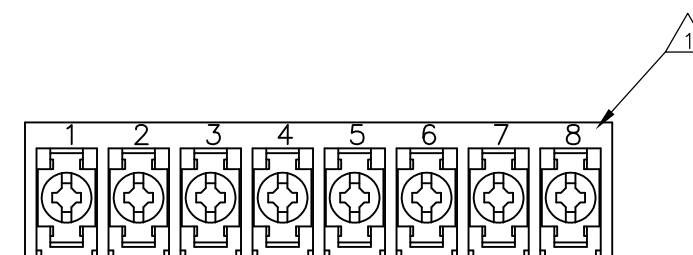
4-1546158-7



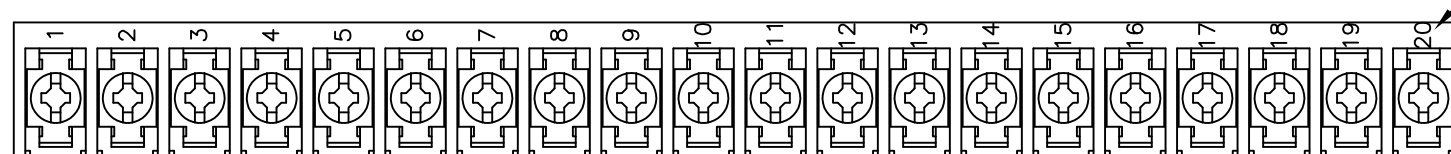
5-1546686-2



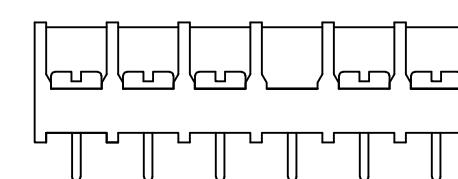
5-1546686-3



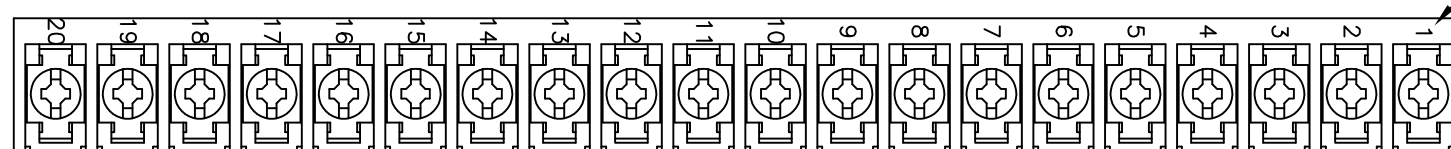
5-1546686-4



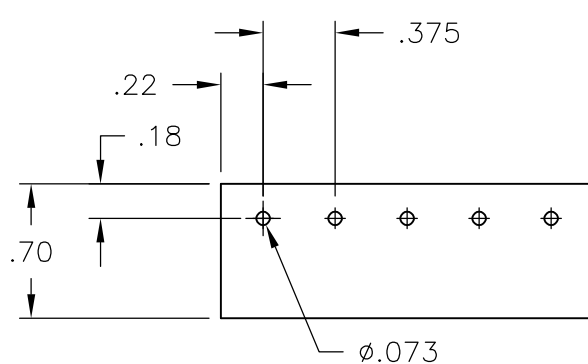
7-1546158-6



6-1546686-1



7-1546158-7



RECOMMENDED PCB LAYOUT

| | DIM A | NO OF POS | CATALOG NUMBER | PART NO |
|----------------|--------|-----------|----------------|-------------|
| OBSOLETE | 11.311 | 30 | 6PCV-30-007 | 8-1546158-7 |
| | 11.311 | 30 | 6PCV-30-007 | 1546814-2 |
| | 10.936 | 29 | 6PCV-29-007 | 1546814-1 |
| | 10.561 | 28 | 6PCV-28-007 | 2-1546686-1 |
| | 10.186 | 27 | 6PCV-27-007 | 2-1546686-0 |
| | 9.811 | 26 | 6PCV-26-007 | 8-1546158-4 |
| | 9.436 | 25 | 6PCV-25-007 | 1-1546686-9 |
| 3 | 9.061 | 24 | 6PCV-24-723 | 3-1437654-8 |
| | 9.061 | 24 | 6PCV-24-007 | 8-1546158-3 |
| | 8.686 | 23 | 6PCV-23-007 | 1-1546686-8 |
| | 8.311 | 22 | 6PCV-22-007 | 1-1546686-7 |
| | 7.936 | 21 | 6PCV-21-007 | 1-1546686-6 |
| 3 | 7.561 | 20 | 6PCV-20-720 | 2-1437654-7 |
| SEE FIGURE | 7.561 | 20 | 6PCV-20-1360 | 7-1546158-7 |
| SEE FIGURE | 7.561 | 20 | 6PCV-20-1359 | 7-1546158-6 |
| | 7.561 | 20 | 6PCV-20-007 | 7-1546158-3 |
| | 7.186 | 19 | 6PCV-19-007 | 1-1546686-5 |
| 3 | 6.811 | 18 | 6PCV-18-1390 | 1546262-5 |
| | 6.811 | 18 | 6PCV-18-007 | 1437654-8 |
| 3 | 6.436 | 17 | 6PCV-17-1206 | 1437654-1 |
| | 6.436 | 17 | 6PCV-17-007 | 1-1546686-4 |
| 3 | 6.061 | 16 | 6PCV-16-719 | 9-1437653-4 |
| | 6.061 | 16 | 6PCV-16-007 | 8-1437653-1 |
| 3 | 5.686 | 15 | 6PCV-15-993 | 7-1437653-6 |
| | 5.686 | 15 | 6PCV-15-007 | 7-1437653-5 |
| 3 | 5.311 | 14 | 6PCV-14-1205 | 7-1437653-0 |
| | 5.311 | 14 | 6PCV-14-007 | 6-1437653-7 |
| 3 | 4.936 | 13 | 6PCV-13-1194 | 6-1437653-5 |
| | 4.936 | 13 | 6PCV-13-007 | 6-1546158-7 |
| 3 | 4.561 | 12 | 6PCV-12-718 | 5-1437653-8 |
| | 4.561 | 12 | 6PCV-12-007 | 5-1437653-2 |
| | 4.186 | 11 | 6PCV-11-007 | 1-1546686-3 |
| 4 | 3.811 | 10 | 6PCV-10-003 | 6-1546158-1 |
| 3 | 3.811 | 10 | 6PCV-10-1193 | 3-1437653-8 |
| | 3.811 | 10 | 6PCV-10-007 | 3-1437653-6 |
| 5 4 | 3.436 | 9 | 6PCV-09-003 | 5-1546686-5 |
| 3 | 3.436 | 9 | 6PCV-09-1270 | 2-1437653-8 |
| | 3.436 | 9 | 6PCV-09-007 | 2-1437653-6 |
| 1 | 3.061 | 8 | 6PCV-08-1397 | 5-1546686-4 |
| 3 | 3.061 | 8 | 6PCV-08-717 | 1-1437653-9 |
| | 3.061 | 8 | 6PCV-08-007 | 1-1437653-4 |
| | 2.686 | 7 | 6PCV-07-007 | 1437653-8 |
| 3 | 2.311 | 6 | 6PCV-06-716 | 1437653-1 |
| | 2.311 | 6 | 6PCV-06-007 | 9-1437652-6 |
| SEE FIGURE 1 6 | 2.311 | 5 | 6PCV-06-1173 | 6-1546686-1 |
| 1 | 1.936 | 5 | 6PCV-05-1396 | 5-1546686-3 |
| 3 | 1.936 | 5 | 6PCV-05-1341 | 8-1437652-6 |
| | 1.936 | 5 | 6PCV-05-007 | 5-1546158-1 |
| 3 | 1.561 | 4 | 6PCV-04-715 | 7-1437652-5 |
| | 1.561 | 4 | 6PCV-04-007 | 6-1437652-8 |
| SEE FIGURE | 1.186 | 3 | 6PCV-03-1256 | 4-1546158-7 |
| | 1.186 | 3 | 6PCV-03-003 | 1546119-2 |
| | 1.186 | 3 | 6PCV-03-007 | 5-1437652-5 |
| 1 | .811 | 2 | 6PCV-02-1395 | 5-1546686-2 |
| 3 | .811 | 2 | 6PCV-02-1339 | 4-1437652-6 |
| | .811 | 2 | 6PCV-02-007 | 4-1437652-0 |

THIS DRAWING IS A CONTROLLED DOCUMENT.

DIMENSIONS: INCHES

TOLERANCES UNLESS OTHERWISE SPECIFIED:

| | | |
|--------|---|------|
| 0 PLC | ± | - |
| 1 PLC | ± | - |
| 2 PLC | ± | .01 |
| 3 PLC | ± | .005 |
| 4 PLC | ± | - |
| ANGLES | ± | 1° |

MATERIAL: - FINISH: -

THIS DRAWING IS A CONTROLLED DOCUMENT.

DWN: S SCHLEGEL 23APR03
 CHK: S YODER 4/23/04
 APVD: S YODER 4/23/04

NAME: -

PRODUCT SPEC: -
 APPLICATION SPEC: -
 WEIGHT: -

CUSTOMER DRAWING

SCALE: NTS SHEET: 1 OF 1 REV: C4

TE Connectivity

6PCV-XX-007 ASSEMBLY

SIZE: A2 CAGE CODE: 00779 DRAWING NO: 4-1437652-0 RESTRICTED TO: -

X-ON Electronics

Largest Supplier of Electrical and Electronic Components

Click to view similar products for [Barrier Terminal Blocks](#) category:

Click to view products by [TE Connectivity](#) manufacturer:

Other Similar products are found below :

[CR151D20104](#) [670A-RZ-15-KT20](#) [6C1N03](#) [6PCR-02](#) [6PCR-02-008](#) [6PCR-05-008](#) [6PCR-08-008](#) [6PCR-09-008](#) [6PCR-13-006](#) [6PCR-15-006](#) [6PCR-21-006](#) [6PCV-06-008](#) [6PCV-06-716](#) [6PCV-09-001](#) [6PCV-10-009](#) [6PCV-15-008](#) [6PCV-17-1206](#) [6PCV-20-323](#) [6PCV-30-006](#) [6STR-06-006](#) [6STR-08-006](#) [6STR-12-008](#) [6STR-13-006](#) [6STR-14-008](#) [6STR-16-008](#) [6STR-17-008](#) [6STR-21-008](#) [6STR-25-008](#) [6STR-27-008](#) [6STV-03-006](#) [6STV-03-008](#) [6STV-04-006](#) [6STV-09-006](#) [6STV-10-006](#) [6WWR-03-693](#) [6WWV-12-008](#) [6WWV-16-008](#) [72212603](#) [72504-C-50](#) [72506-C](#) [72507-C-50](#) [73203](#) [75505-C](#) [75505-C-50](#) [75510-C](#) [77010-50](#) [7C1N08](#) [812-GP-3/4ST-09](#) [8-1437402-5](#) [8-1437402-7](#)