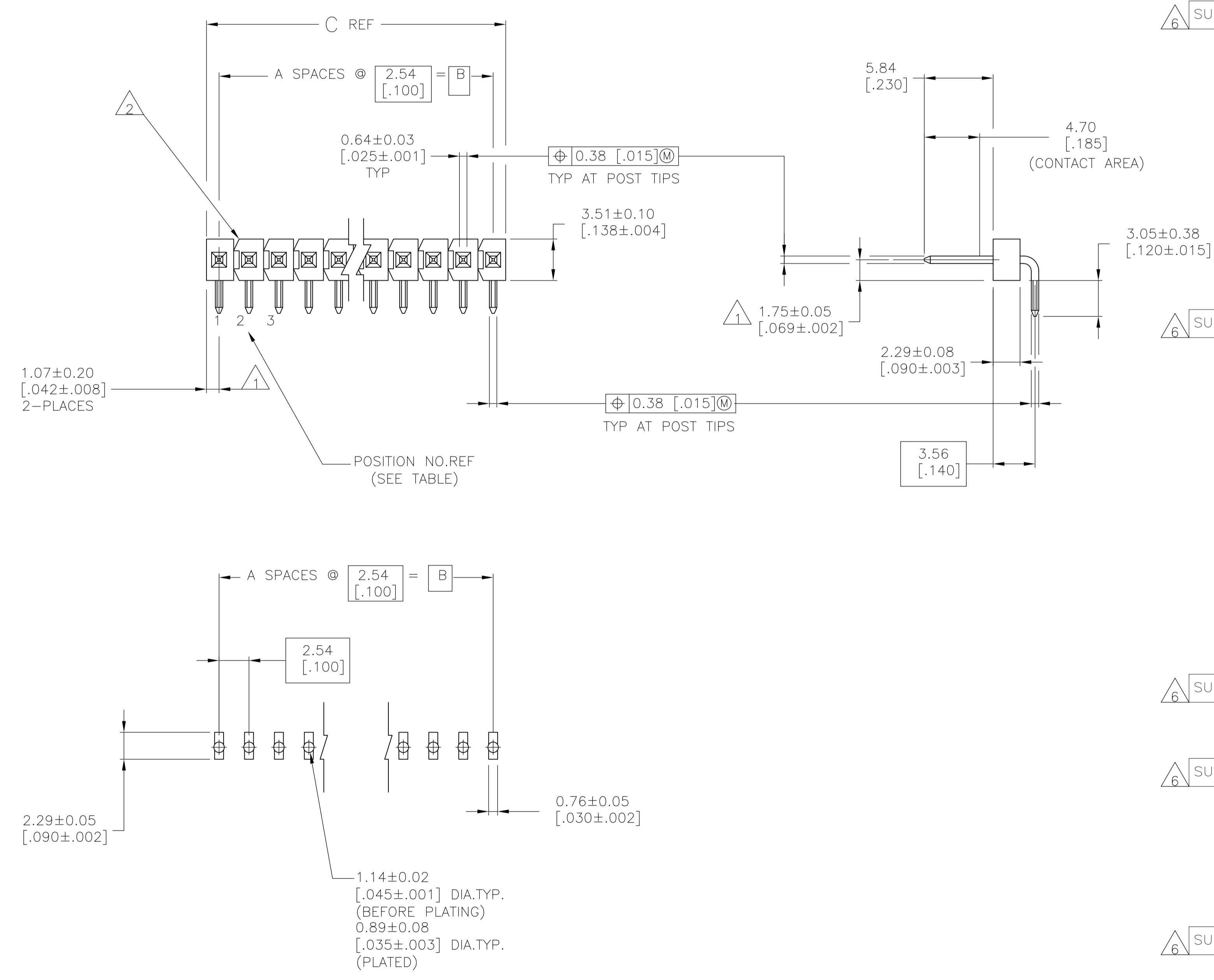


- 1 THE NOTED DIMENSIONS APPLY AT THE INTERSECTION OF THE POST AND HOUSING.
- 2 BREAKAWAY NOTCH ANGLE CAN BE ORIENTED TO THE RIGHT (AS SHOWN) OR TO THE LEFT
- 3 0.000762 [.000030] GOLD ON CONTACT AREA, 0.00254-0.00508 [.000100-.000200] MATTE, TIN-LEAD ON SOLDER TAIL, ALL OVER 0.00127 [.000050] NICKEL.
- 4 HOUSING: GLASS FILLED THERMOPLASTIC, COLOR, BLACK. (WILL WITHSTAND VAPOR PHASE REFLOW.) CONTACT: COPPER ALLOY.
- 5 0.000762 [.000030] GOLD ON CONTACT AREA, 0.00254-0.00508 [.000100-.000200] MATTE TIN, ON SOLDER TAIL, ALL OVER 0.00127 [.000050] NICKEL.
- 6 OBSOLETE PARTS: OBSOLETE CIS STREAMLINING PER D.RENAUD/D.SINISI



RECOMMENDED PC BOARD MOUNTING DIMENSIONS FOR .063 [.160] THICK PC BOARD AND .012 [.305] STENCIL THICK.

PLATING	C	B	A	NO OF POSITIONS	PART NUMBER
3	101.19 [3.984]	99.06 [3.900]	39	40	4-146304-0
3	98.65 [3.884]	96.52 [3.800]	38	39	3-146304-9
3	96.11 [3.784]	93.98 [3.700]	37	38	3-146304-8
3	93.57 [3.684]	91.44 [3.600]	36	37	3-146304-7
6	91.03 [3.584]	88.90 [3.500]	35	36	3-146304-6
3	88.49 [3.484]	86.36 [3.400]	34	35	3-146304-5
3	85.95 [3.384]	83.82 [3.300]	33	34	3-146304-4
3	83.41 [3.284]	81.28 [3.200]	32	33	3-146304-3
3	80.87 [3.184]	78.74 [3.100]	31	32	3-146304-2
3	78.33 [3.084]	76.20 [3.000]	30	31	3-146304-1
3	75.79 [2.984]	73.66 [2.900]	29	30	3-146304-0
3	73.25 [2.884]	71.12 [2.800]	28	29	2-146304-9
3	70.71 [2.784]	68.58 [2.700]	27	28	2-146304-8
3	68.17 [2.684]	66.04 [2.600]	26	27	2-146304-7
3	65.63 [2.584]	63.5 [2.500]	25	26	2-146304-6
6	63.09 [2.484]	60.96 [2.400]	24	25	2-146304-5
3	60.55 [2.384]	58.42 [2.300]	23	24	2-146304-4
3	58.01 [2.284]	55.88 [2.200]	22	23	2-146304-3
3	55.47 [2.184]	53.34 [2.100]	21	22	2-146304-2
3	52.93 [2.084]	50.80 [2.000]	20	21	2-146304-1
3	50.39 [1.984]	48.26 [1.900]	19	20	2-146304-0
3	47.85 [1.884]	45.72 [1.800]	18	19	1-146304-9
3	45.31 [1.784]	43.18 [1.700]	17	18	1-146304-8
3	42.77 [1.684]	40.64 [1.600]	16	17	1-146304-7
3	40.23 [1.584]	38.10 [1.500]	15	16	1-146304-6
3	37.69 [1.484]	35.56 [1.400]	14	15	1-146304-5
3	35.15 [1.384]	33.02 [1.300]	13	14	1-146304-4
3	32.61 [1.284]	30.48 [1.200]	12	13	1-146304-3
6	30.07 [1.184]	27.94 [1.100]	11	12	1-146304-2
3	27.53 [1.084]	25.40 [1.000]	10	11	1-146304-1
6	24.99 [.984]	22.86 [.900]	9	10	1-146304-0
6	22.45 [.884]	20.32 [.800]	8	9	146304-9
6	19.91 [.784]	17.78 [.700]	7	8	146304-8
3	17.37 [.684]	15.24 [.600]	6	7	146304-7
3	14.83 [.584]	12.70 [.500]	5	6	146304-6
3	12.29 [.484]	10.16 [.400]	4	5	146304-5
3	9.75 [.384]	7.62 [.300]	3	4	146304-4
6	7.21 [.284]	5.08 [.200]	2	3	146304-3
3	4.67 [.184]	2.54 [.100]	1	2	146304-2
6	2.13 [.084]	[-]	0	1	146304-1

OBSOLETE

THIS DRAWING IS A CONTROLLED DOCUMENT.

DIMENSIONS: mm [INCHES]	TOLERANCES UNLESS OTHERWISE SPECIFIED:	0 PLC ± -	1 PLC ± -	2 PLC ± 0.51[.020]	3 PLC ± 0.127[.005]	4 PLC ± 0.0127[.0005]	ANGLES ±
-------------------------	--	-----------	-----------	--------------------	---------------------	-----------------------	----------

MATERIAL: 4 FINISH: SEE TABLE


APPROVED: G. DUBNICZKI

PRODUCT SPEC: NAME: HEADER ASSEMBLY, MOD II, BREAKAWAY, HIGH TEMPERATURE, RIGHT ANGLE, SINGLE ROW, .100 C/L, W/.025 SQUARE POSTS

APPLICATION SPEC: SIZE: A1 CAGE CODE: 00779 DRAWING NO: 146304 RESTRICTED TO: 1

WEIGHT: CUSTOMER DRAWING SCALE: 4:1 SHEET 1 OF 2 REV C

6	OBSOLETE	5	101.19 [3.984]	99.06 [3.900]	39	40	9-146304-0		
		5	98.65 [3.884]	96.52 [3.800]	38	39	8-146304-9		
		5	96.11 [3.784]	93.98 [3.700]	37	38	8-146304-8		
6	OBSOLETE	5	93.57 [3.684]	91.44 [3.600]	36	37	8-146304-7		
		5	91.03 [3.584]	88.90 [3.500]	35	36	8-146304-6		
		5	88.49 [3.484]	86.36 [3.400]	34	35	8-146304-5		
		5	85.95 [3.384]	83.82 [3.300]	33	34	8-146304-4		
		5	83.41 [3.284]	81.28 [3.200]	32	33	8-146304-3		
		5	80.87 [3.184]	78.74 [3.100]	31	32	8-146304-2		
		5	78.33 [3.084]	76.20 [3.000]	30	31	8-146304-1		
		5	75.79 [2.984]	73.66 [2.900]	29	30	8-146304-0		
		5	73.25 [2.884]	71.12 [2.800]	28	29	7-146304-9		
		5	70.71 [2.784]	68.58 [2.700]	27	28	7-146304-8		
		5	68.17 [2.684]	66.04 [2.600]	26	27	7-146304-7		
		5	65.63 [2.584]	63.5 [2.500]	25	26	7-146304-6		
		5	63.09 [2.484]	60.96 [2.400]	24	25	7-146304-5		
		5	60.55 [2.384]	58.42 [2.300]	23	24	7-146304-4		
		6	OBSOLETE	5	58.01 [2.284]	55.88 [2.200]	22	23	7-146304-3
5	55.47 [2.184]			53.34 [2.100]	21	22	7-146304-2		
5	52.93 [2.084]			50.80 [2.000]	20	21	7-146304-1		
5	50.39 [1.984]			48.26 [1.900]	19	20	7-146304-0		
5	47.85 [1.884]			45.72 [1.800]	18	19	6-146304-9		
5	45.31 [1.784]			43.18 [1.700]	17	18	6-146304-8		
5	42.77 [1.684]			40.64 [1.600]	16	17	6-146304-7		
5	40.23 [1.584]			38.10 [1.500]	15	16	6-146304-6		
5	37.69 [1.484]			35.56 [1.400]	14	15	6-146304-5		
5	35.15 [1.384]			33.02 [1.300]	13	14	6-146304-4		
5	32.61 [1.284]			30.48 [1.200]	12	13	6-146304-3		
5	30.07 [1.184]			27.94 [1.100]	11	12	6-146304-2		
5	27.53 [1.084]			25.40 [1.000]	10	11	6-146304-1		
6	OBSOLETE			5	24.99 [.984]	22.86 [.900]	9	10	6-146304-0
				5	22.45 [.884]	20.32 [.800]	8	9	5-146304-9
6	OBSOLETE	5	19.91 [.784]	17.78 [.700]	7	8	5-146304-8		
		5	17.37 [.684]	15.24 [.600]	6	7	5-146304-7		
6	OBSOLETE	5	14.83 [.584]	12.70 [.500]	5	6	5-146304-6		
		5	12.29 [.484]	10.16 [.400]	4	5	5-146304-5		
6	OBSOLETE	5	9.75 [.384]	7.62 [.300]	3	4	5-146304-4		
		5	7.21 [.284]	5.08 [.200]	2	3	5-146304-3		
6	OBSOLETE	5	4.67 [.184]	2.54 [.100]	1	2	5-146304-2		
		5	2.13 [.084]	-	0	1	5-146304-1		
PLATING		C	B	A	NO OF POSITIONS	PART NUMBER			

THIS DRAWING IS A CONTROLLED DOCUMENT.		DIN I. HOFFMAN 21JUN95	 TE Connectivity
DIMENSIONS: mm [INCHES]		TOLERANCES UNLESS OTHERWISE SPECIFIED:	
0 PLC ± -	1 PLC ± -	2 PLC ± 0.51[.020]	NAME
3 PLC ± 0.127[.005]	4 PLC ± 0.0127[.0005]	ANGLES ± -	PRODUCT SPEC
MATERIAL 4	FINISH SEE TABLE	WEIGHT -	APPLICATION SPEC
		SIZE A1	CAGE CODE DRAWING NO
		00779	RESTRICTED TO
		146304	SCALE 1:1 SHEET 2 OF 2 REV C
		CUSTOMER DRAWING	

X-ON Electronics

Largest Supplier of Electrical and Electronic Components

Click to view similar products for [Headers & Wire Housings](#) category:

Click to view products by [TE Connectivity](#) manufacturer:

Other Similar products are found below :

[892-18-020-10-001101](#) [58102-G61-06LF](#) [582553-1](#) [0009485154](#) [009176003701906](#) [0050291907](#) [LY20-4P-DT1-P1E-BR](#) [02.125.8002.8](#)
[609-3404](#) [61062-3](#) [61082-181009](#) [622-3653LF](#) [63453-116](#) [636-1030](#) [636-1427](#) [636-3427](#) [636-4007](#) [641938-9](#) [641991-4](#) [644827-2](#) [65817-](#)
[010LF](#) [65817-015LF](#) [65863-015LF](#) [66207-023LF](#) [67095-007LF](#) [67601157](#) [68645-018](#) [68648-049](#) [70.362.1628.0](#) [70-4210](#) [70-4226B](#) [70-](#)
[4853B](#) [707-5020](#) [707-5028](#) [71.350.2428.0](#) [71918-208LF](#) [71961-016LF](#) [733-134](#) [733-162](#) [754199-000](#) [760-3052](#) [787-8014-00](#) [79531-3000](#)
[FCN-360C032-B](#) [FCN-367T-T012/H](#) [FCN-723D010/2](#) [80.063.4001.1](#) [800-90-001-10-001000](#) [800-90-010-10-002000](#) [801-43-002-10-013000](#)