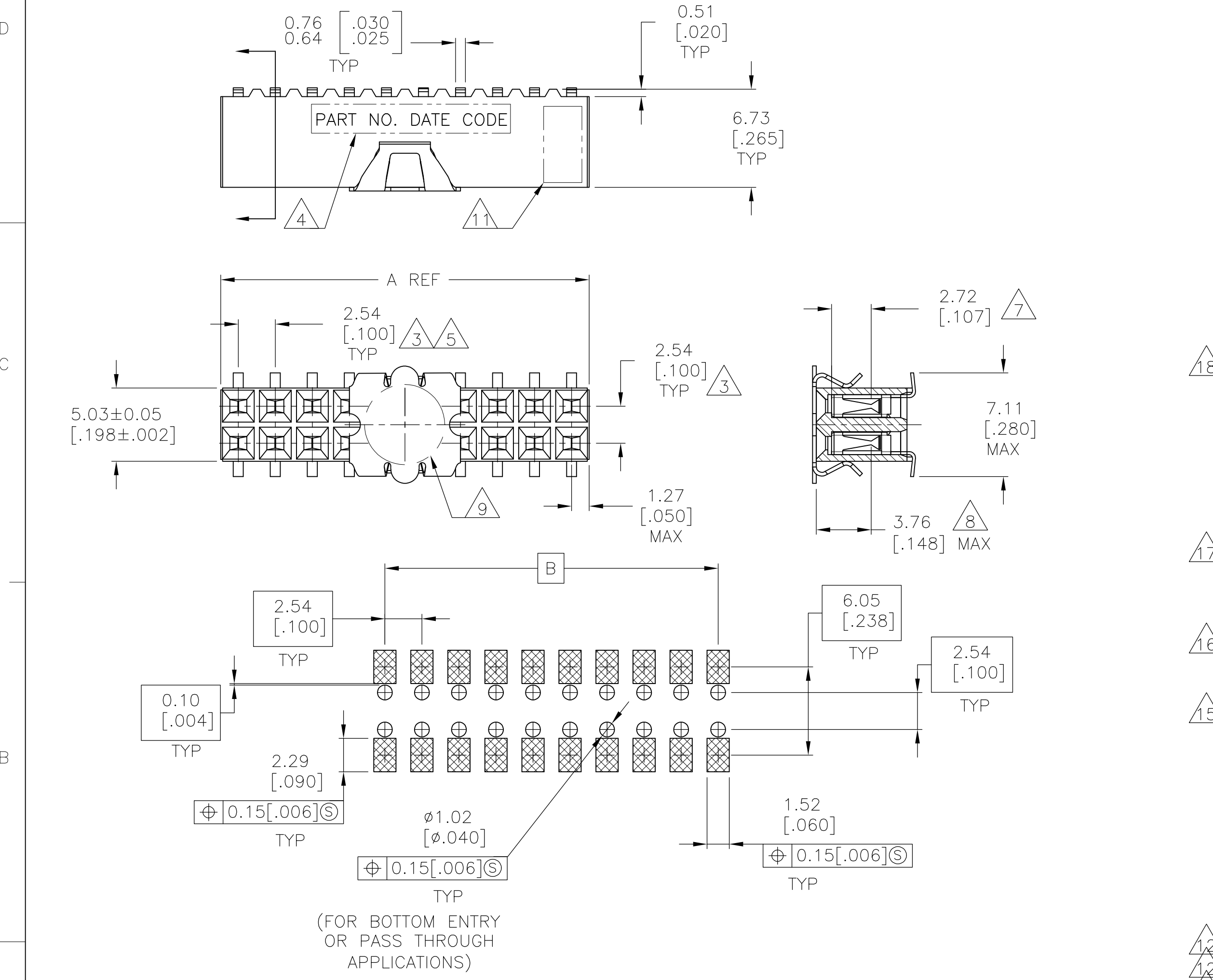


LOC		DIST		REVISIONS					
AD	00	P	LTR	DESCRIPTION	DATE	DWN	APVD		
		J9		REVISED PER ECO-13-005565	01APR13	KH	JO		



FOR PART NUMBERS 5-147105-1 THRU 9-147105-0
SEE SHEET 2

120mm	99.06 [3.900]	101.60 [4.000]	80	4-147105-0	
	96.52 [3.800]	99.06 [3.900]	78	3-147105-9	
	93.98 [3.700]	96.52 [3.800]	76	3-147105-8	
	91.44 [3.600]	93.98 [3.700]	74	3-147105-7	
	88.90 [3.500]	91.44 [3.600]	72	3-147105-6	
	86.36 [3.400]	88.90 [3.500]	70	3-147105-5	
	83.82 [3.300]	86.36 [3.400]	68	3-147105-4	
	81.28 [3.200]	83.82 [3.300]	66	3-147105-3	
	78.74 [3.100]	81.28 [3.200]	64	3-147105-2	
	76.20 [3.000]	78.74 [3.100]	62	3-147105-1	
	73.66 [2.900]	76.20 [3.000]	60	3-147105-0	
	71.12 [2.800]	73.66 [2.900]	58	2-147105-9	
	68.58 [2.700]	71.12 [2.800]	56	2-147105-8	
	66.04 [2.600]	68.58 [2.700]	54	2-147105-7	
	88mm	63.50 [2.500]	66.04 [2.600]	52	2-147105-6
60.96 [2.400]		63.50 [2.500]	50	2-147105-5	
58.42 [2.300]		60.96 [2.400]	48	2-147105-4	
55.88 [2.200]		58.42 [2.300]	46	2-147105-3	
53.34 [2.100]		55.88 [2.200]	44	2-147105-2	
50.80 [2.000]		53.34 [2.100]	42	2-147105-1	
48.26 [1.900]		50.80 [2.000]	40	2-147105-0	
45.72 [1.800]		48.26 [1.900]	38	1-147105-9	
43.18 [1.700]		45.72 [1.800]	36	1-147105-8	
72mm	40.64 [1.600]	43.18 [1.700]	34	1-147105-7	
	38.10 [1.500]	40.64 [1.600]	32	1-147105-6	
	35.56 [1.400]	38.10 [1.500]	30	1-147105-5	
	33.02 [1.300]	35.56 [1.400]	28	1-147105-4	
	30.48 [1.200]	33.02 [1.300]	26	1-147105-3	
	27.94 [1.100]	30.48 [1.200]	24	1-147105-2	
	25.40 [1.000]	27.94 [1.100]	22	1-147105-1	
	22.86 [.900]	25.40 [1.000]	20	1-147105-0	
	20.32 [.800]	22.86 [.900]	18	147105-9	
	17.78 [.700]	20.32 [.800]	16	147105-8	
44mm	15.24 [.600]	17.78 [.700]	14	147105-7	
	12.70 [.500]	15.24 [.600]	12	147105-6	
	10.16 [.400]	12.70 [.500]	10	147105-5	
	7.62 [.300]	10.16 [.400]	8	147105-4	
	5.08 [.200]	7.62 [.300]	6	147105-3	
	2.54 [.100]	5.08 [.200]	4	147105-2	
	2.54 [.100]	5.08 [.200]	2	147105-1	
	24mm	-	2.54 [.100]		

RECOMMENDED PC BOARD LAYOUT
0.20 [.008] THICK STENCIL

FINISH	EIA TAPE WIDTH	B	A	NO. OF POSN.	PART NUMBER
--------	----------------	---	---	--------------	-------------

THIS DRAWING IS A CONTROLLED DOCUMENT.		DWN M.BINNER 06NOV02	TE Connectivity RECEPTACLE ASSEMBLY, MOD IV, DOUBLE ROW, DUAL ENTRY, .100X.100CL, SURFACE MOUNT, AMPMODU	
DIMENSIONS: mm [INCHES]		CHK J.OLSON 06NOV02		
TOLERANCES UNLESS OTHERWISE SPECIFIED:		APVD J.OLSON 06NOV02		
0 PLC ± - 1 PLC ± - 2 PLC ± .005[0.13] 3 PLC ± - 4 PLC ± - ANGLES ± -		PRODUCT SPEC		
MATERIAL 1		FINISH SEE TABLE	APPLICATION SPEC 108-25022	NAME 108-25022
			WEIGHT 114-25018	SIZE A2
			CUSTOMER DRAWING	CAGE CODE 00779
				DRAWING NO. C-147105
				RESTRICTED TO -
				SCALE 4:1
				SHEET 1 of 2
				REV J9


THIS DRAWING IS UNPUBLISHED. RELEASED FOR PUBLICATION
 © COPYRIGHT - By - ALL RIGHTS RESERVED.

LOC		DIST		REVISIONS				
P	LTR	DESCRIPTION			DATE	DWN	APVD	
-	-	SEE SHEET 1			-	-	-	

- 1 HOUSING: FLAME RETARDANT, GLASS FILLED, POLYESTER, COLOR: BLACK.
CONTACT: PHOSPHOR BRONZE
VACUUM COVER: STAINLESS STEEL
- 2 CONTACT: DUPLEX PLATED 0.76µm[.000030] GOLD IN CONTACT AREA, 3.81-7.62µm[.000150-.000300] BRIGHT TIN-LEAD ON, LEADS, ALL OVER 1.27µm[.000050] MINIMUM NICKEL
- 3 THESE DIMENSIONS PERTAIN TO CAVITY CENTERLINES ONLY NOT TO CONTACT LOCATIONS
- 4 MARK PART NUMBER AND DATE CODE, IN APPROXIMATE LOCATION SHOWN, EITHER SIDE.
- 5 TOLERANCE IS NON-CUMULATIVE.
- 6 2 POSITION DATE CODE IS MARKED OPPOSITE SIDE OF TE CONNECTIVITY LOGO.
- 7 POINT OF MEASUREMENT DIMENSION FOR PLATING THICKNESS (INSIDE CONTACT BEAM).
- 8 POINT-OF-CONTACT DIMENSION.
- 9 ø5.51[.217] MIN TARGET AREA FOR VACUUM PICK UP. COVER TO BE REMOVED AFTER SOLDERING.
- 10 PACKAGED IN TAPE & REEL PER EIA 481 SPECIFICATION.
- 11 TE CONNECTIVITY TRADEMARK AND CSA LOGO ARE MOLDED INTO HOUSING.
- 12 NO PART NUMBER REQUIRED ON THIS PART.
- 13 CONTACT: DUPLEX PLATE CONNECTIVITYD 0.76µm[.000030] GOLD IN CONTACT AREA, 3.81-7.62µm[.000150-.000300] MATTE TIN ON LEADS, ALL OVER 1.27µm[.000050] MINIMUM NICKEL.
- 14 ROHS 2002/95/EC COMPLIANT.
- 15 SUPERRSEDED BY 6-147105-5
- 16 SUPERRSEDED BY 6-147105-8
- 17 SUPERRSEDED BY 7-147105-2
- 18 SUPERRSEDED BY 8-147105-0

120mm	99.06[3.900]	101.60[4.000]	80	9-147105-0	
	96.52[3.800]	99.06[3.900]	78	8-147105-9	
	93.98[3.700]	96.52[3.800]	76	8-147105-8	
	91.44[3.600]	93.98[3.700]	74	8-147105-7	
	88.90[3.500]	91.44[3.600]	72	8-147105-6	
	86.36[3.400]	88.90[3.500]	70	8-147105-5	
	83.82[3.300]	86.36[3.400]	68	8-147105-4	
	81.28[3.200]	83.82[3.300]	66	8-147105-3	
	78.74[3.100]	81.28[3.200]	64	8-147105-2	
	76.20[3.000]	78.74[3.100]	62	8-147105-1	
	73.66[2.900]	76.20[3.000]	60	8-147105-0	
	71.12[2.800]	73.66[2.900]	58	7-147105-9	
88mm	68.58[2.700]	71.12[2.800]	56	7-147105-8	
	66.04[2.600]	68.58[2.700]	54	7-147105-7	
	63.50[2.500]	66.04[2.600]	52	7-147105-6	
	60.96[2.400]	63.50[2.500]	50	7-147105-5	
	58.42[2.300]	60.96[2.400]	48	7-147105-4	
72mm	55.88[2.200]	58.42[2.300]	46	7-147105-3	
	53.34[2.100]	55.88[2.200]	44	7-147105-2	
	50.80[2.000]	53.34[2.100]	42	7-147105-1	
	48.26[1.900]	50.80[2.000]	40	7-147105-0	
	45.72[1.800]	48.26[1.900]	38	6-147105-9	
	43.18[1.700]	45.72[1.800]	36	6-147105-8	
	40.64[1.600]	43.18[1.700]	34	6-147105-7	
	38.10[1.500]	40.64[1.600]	32	6-147105-6	
	35.56[1.400]	38.10[1.500]	30	6-147105-5	
	33.02[1.300]	35.56[1.400]	28	6-147105-4	
44mm	30.48[1.200]	33.02[1.300]	26	6-147105-3	
	27.94[1.100]	30.48[1.200]	24	6-147105-2	
	25.40[1.000]	27.94[1.100]	22	6-147105-1	
	22.86[.900]	25.40[1.000]	20	6-147105-0	
	20.32[.800]	22.86[.900]	18	5-147105-9	
	17.78[.700]	20.32[.800]	16	5-147105-8	
	15.24[.600]	17.78[.700]	14	5-147105-7	
	12.70[.500]	15.24[.600]	12	5-147105-6	
	10.16[.400]	12.70[.500]	10	5-147105-5	
	7.62[.300]	10.16[.400]	8	5-147105-4	
24mm	5.08[.200]	7.62[.300]	6	5-147105-3	
	2.54[.100]	5.08[.200]	4	5-147105-2	
OBSOLETE	-	2.54[.100]	2	5-147105-1	
FINISH	EIA TAPE WIDTH	B	A	NO.OF POSN.	PART NUMBER

12/6 OBSOLETE

THIS DRAWING IS A CONTROLLED DOCUMENT.		DWN M.BINNER 06NOV02	 TE Connectivity	
DIMENSIONS: mm [INCHES]		CHK J.OLSON 06NOV02		
TOLERANCES UNLESS OTHERWISE SPECIFIED:		APVD J.OLSON 06NOV02	NAME RECEPTACLE ASSEMBLY, MOD IV, DOUBLE ROW, DUAL ENTRY, .100X.100CL, SURFACE MOUNT, AMPMODU	
0 PLC ± -		PRODUCT SPEC	SIZE CAGE CODE DRAWING NO RESTRICTED TO	
1 PLC ± -		APPLICATION SPEC	A2 00779 C=147105	
2 PLC ± .005[0.13]		108-25022	SCALE 1:1 SHEET 2 OF 2 REV J9	
3 PLC ± -		WEIGHT 114-25018		
4 PLC ± -		CUSTOMER DRAWING		
ANGLES ± -				
FINISH SEE TABLE				

X-ON Electronics

Largest Supplier of Electrical and Electronic Components

Click to view similar products for [Headers & Wire Housings](#) category:

Click to view products by [TE Connectivity](#) manufacturer:

Other Similar products are found below :

[892-18-020-10-001101](#) [58102-G61-06LF](#) [582553-1](#) [0009485154](#) [009176003701906](#) [0050291907](#) [LY20-4P-DT1-P1E-BR](#) [02.125.8002.8](#)
[609-3404](#) [61062-3](#) [61082-181009](#) [622-3653LF](#) [63453-116](#) [636-1030](#) [636-1427](#) [636-3427](#) [636-4007](#) [641938-9](#) [641991-4](#) [644827-2](#) [65817-](#)
[010LF](#) [65817-015LF](#) [65863-015LF](#) [66207-023LF](#) [67095-007LF](#) [67601157](#) [68645-018](#) [68648-049](#) [70.362.1628.0](#) [70-4210](#) [70-4226B](#) [70-](#)
[4853B](#) [707-5020](#) [707-5028](#) [71.350.2428.0](#) [71918-208LF](#) [71961-016LF](#) [733-134](#) [733-162](#) [754199-000](#) [760-3052](#) [787-8014-00](#) [79531-3000](#)
[FCN-360C032-B](#) [FCN-367T-T012/H](#) [FCN-723D010/2](#) [80.063.4001.1](#) [800-90-001-10-001000](#) [800-90-010-10-002000](#) [801-43-002-10-013000](#)