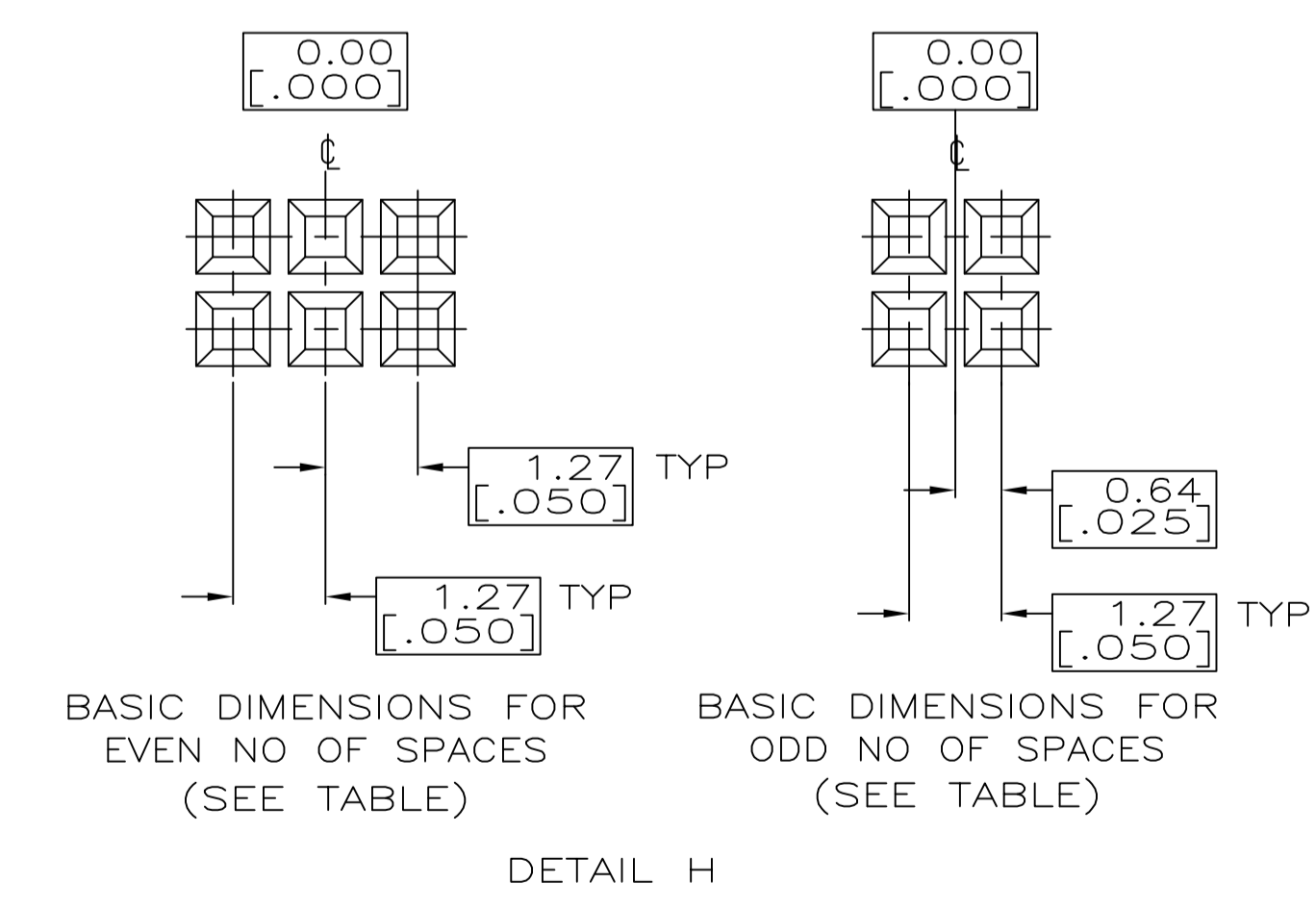
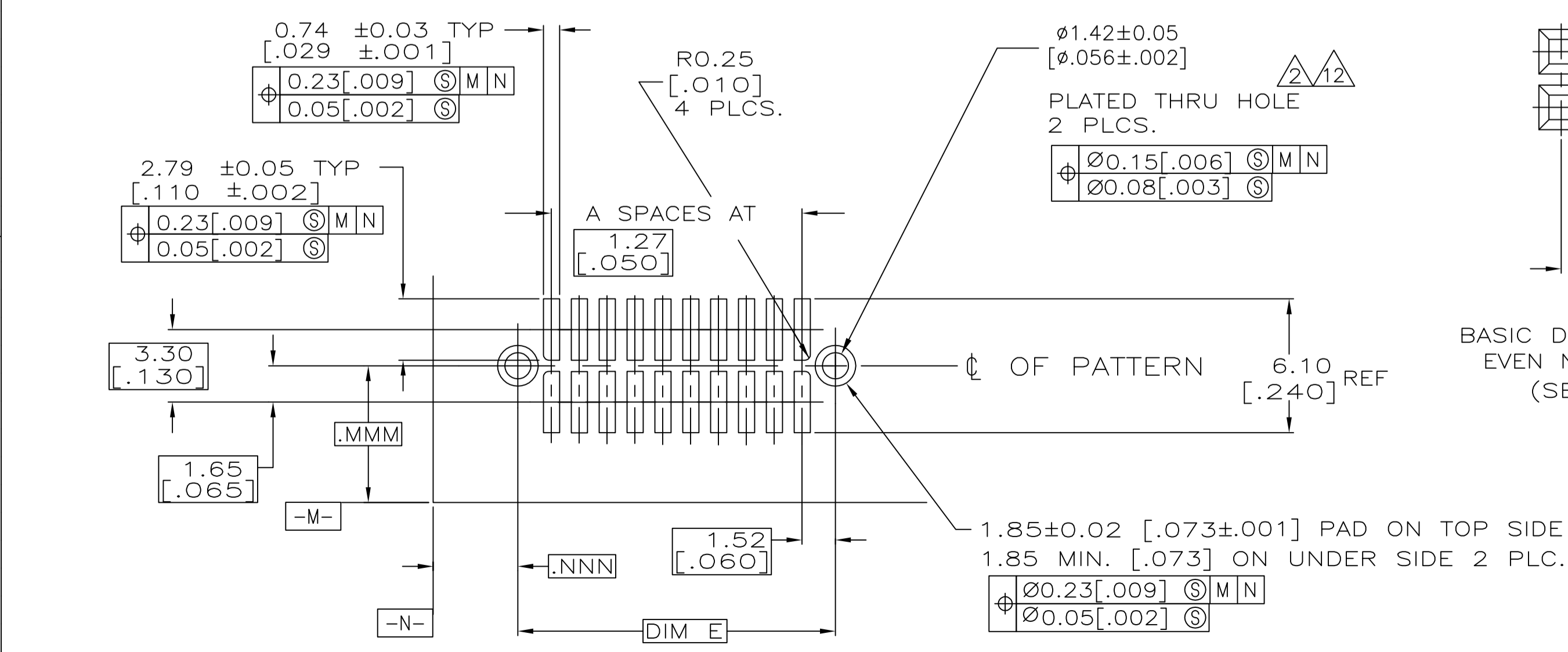
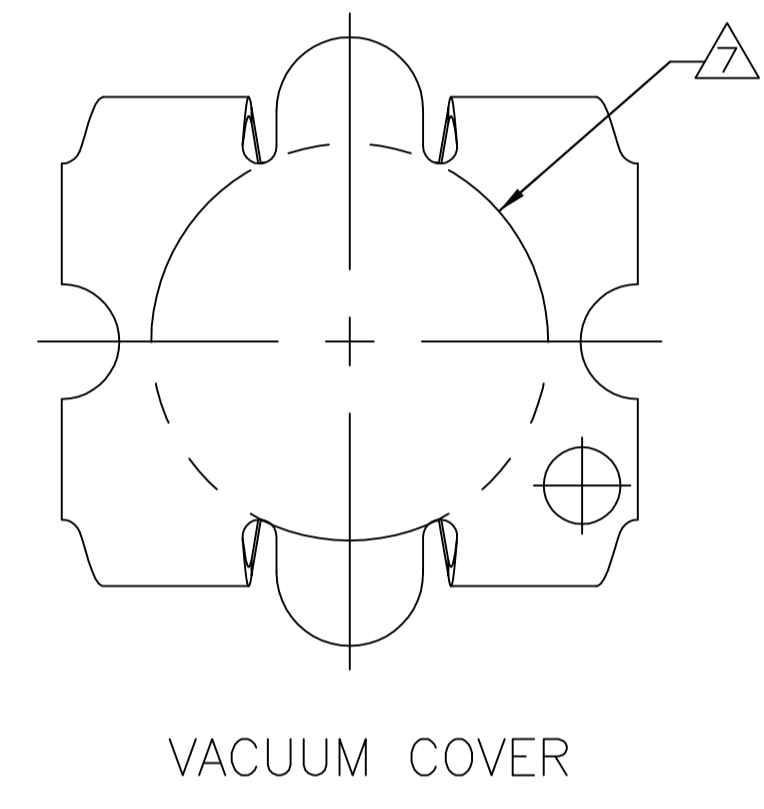
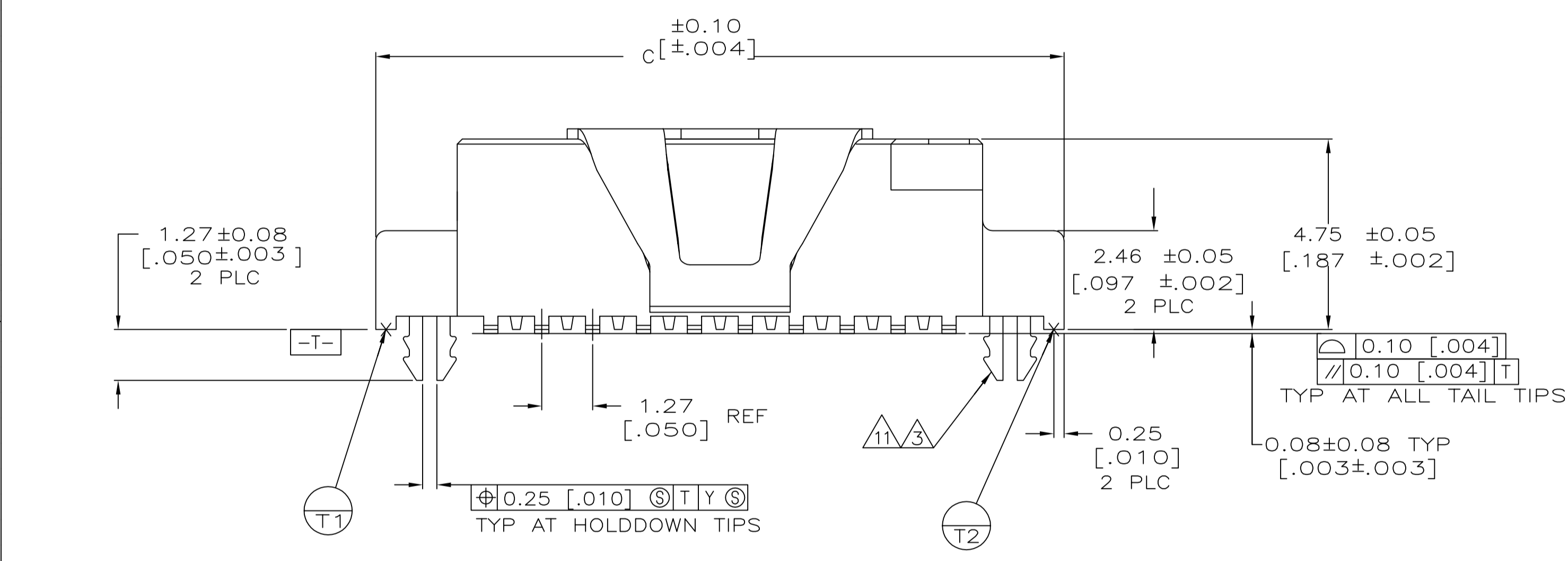
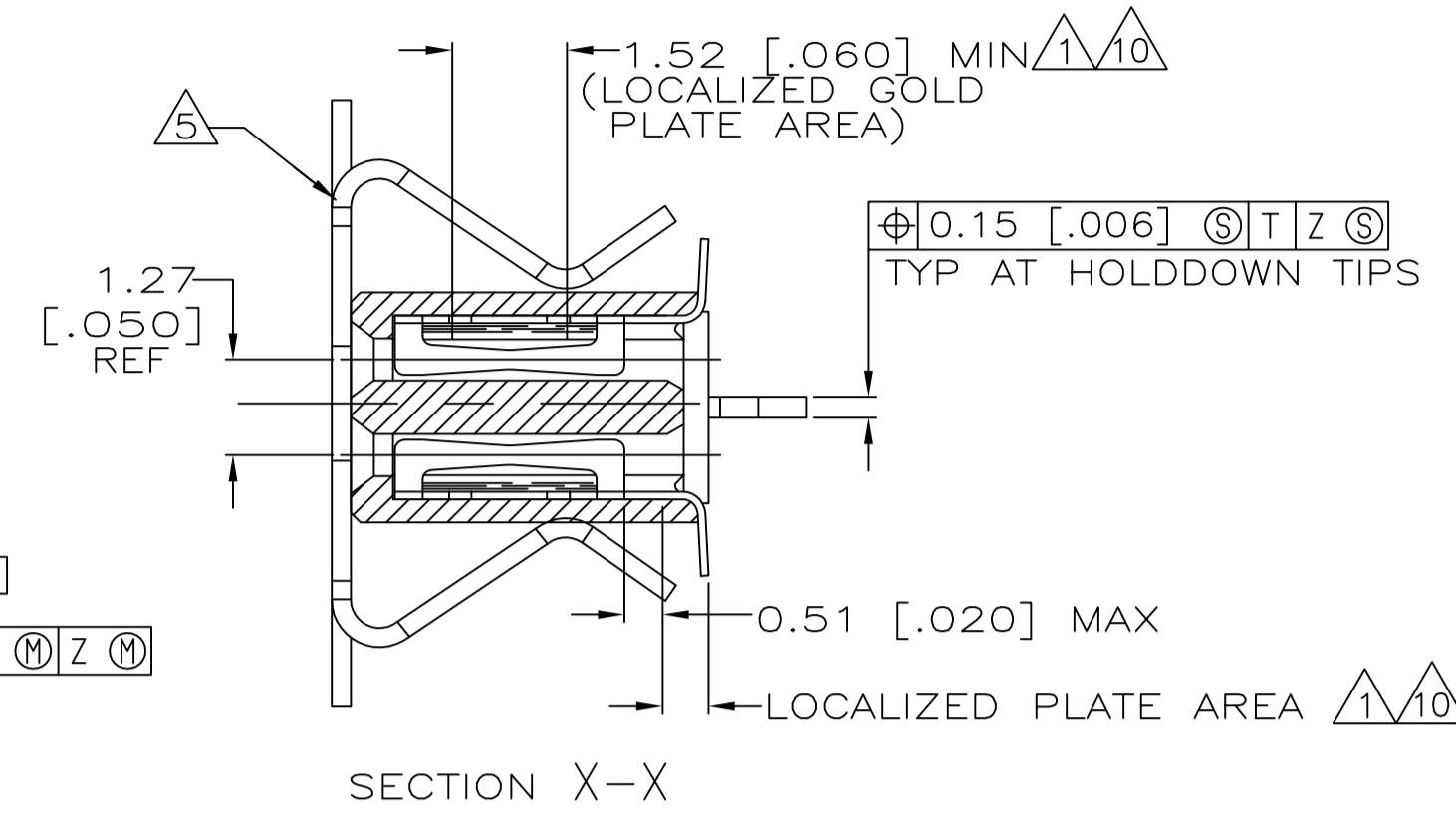
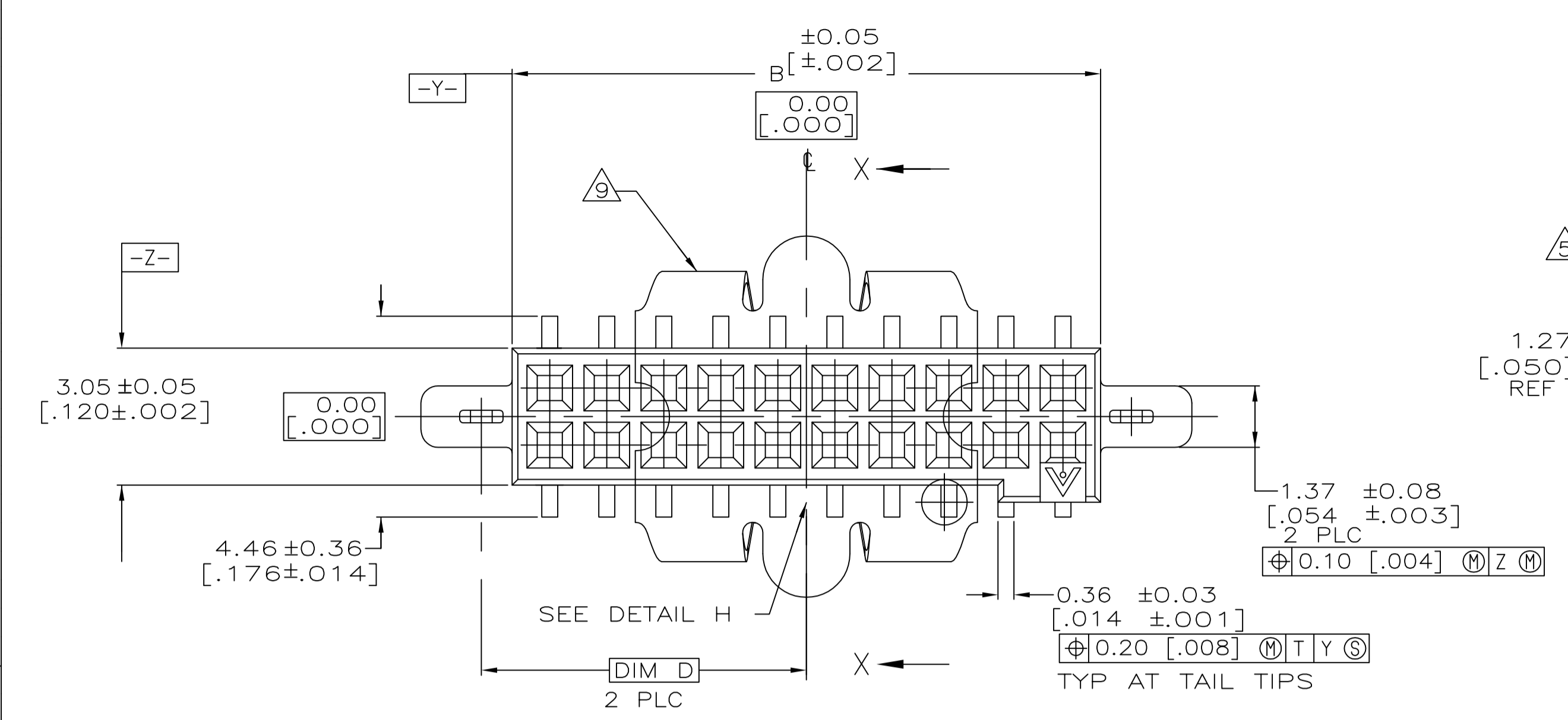


| REVISIONS | | | | | |
|-----------|-----|---------------------------|-----------|-----|------|
| P | LTR | DESCRIPTION | DATE | OWN | APVD |
| D3 | | REVISED PER ECO-12-012141 | 02JUL12 | KH | JO |
| E | | REVISED PER ECO-17-016552 | 17NOV2017 | RS | JO |



- 1 0.00076 [.000030] GOLD IN LOCALIZED PLATE AREA 0.00381 [.000150] TIN-LEAD ON SOLDER TAILS ALL OVER 0.00127 [.000050] NICKEL
- 2 USE 1.55±0.02 [.0610±.0010] DRILLED HOLE (1.55mm DRILL) FINISH TO BE TIN/LEAD OVER 0.02 [.001] MIN COPPER
- 3 PLATING: 0.0038 [.000150] TIN-LEAD OVER 0.00127 [.000050] NICKEL
- 4 IF PLANNING TO USE MORE THAN ONE MATING PAIR OF CONNECTORS TO INTERCONNECT 2 BOARDS, PLEASE REFER TO PARA. 3.3 IN THE APPLICATION SPEC, #114-7010
- 5 VACUUM COVER DESIGNED FOR 4.0 [.160] DIA NOZZLE. VACUUM COVER TO BE REMOVED AFTER SOLDERING.
- 6 PACKAGED IN EIA 481 TAPE AND REEL. SEE TABLE FOR TAPE WIDTHS.
- 7 5.2 [.205] MIN TARGET AREA FOR VACUUM PICK-UP.
- 8 HOUSING: LCP, COLOR-BLACK. CONTACT: COPPER ALLOY PER ASTM SPECIFICATION B422. HOLDDOWN: COPPER ALLOY PER ASTM SPECIFICATION B194. VACUUM COVER: ALUMINUM ALLOY PER ASTM SPECIFICATION B209.
- 9 VACUUM COVER SHOWN IN PHANTOM LINE.
- 10 0.00076 [.000030] GOLD IN LOCALIZED PLATE AREA 0.00381 [.000150] TIN ON SOLDER TAILS ALL OVER 0.00127 [.000050] NICKEL
- 11 PLATING: 0.0038 [.000150] TIN OVER 0.00127 [.000050] NICKEL
- 12 USE 1.55±0.02 [.0610±.0010] DRILLED HOLE (1.55mm DRILL) FINISH TO BE TIN OVER 0.02 [.001] MIN COPPER
- 13 OBSOLETE PARTS: OBSOLETE CIS STREAMLINING PER D.RENAUD/D.SINISI

| FINISH | TAPE WIDTH | E | D | C | B | A | NO OF POS | PART NUMBER |
|--------|--------------------------|---------------|---------------|---------------|---------------|----|-----------|-------------|
| 10/11 | 88 mm | 65.28 [2.570] | 32.64 [1.285] | 67.97 [2.676] | 63.91 [2.516] | 49 | 100 | 5-147384-9 |
| 10/11 | 72 mm | 52.58 [2.070] | 26.29 [1.035] | 55.27 [2.176] | 51.21 [2.016] | 39 | 80 | 5-147384-8 |
| 10/11 | 72 mm | 46.23 [1.820] | 23.11 [.910] | 48.92 [1.926] | 44.86 [1.766] | 34 | 70 | 5-147384-7 |
| 10/11 | 72 mm | 39.88 [1.570] | 19.94 [.785] | 42.57 [1.676] | 38.51 [1.516] | 29 | 60 | 5-147384-6 |
| 10/11 | 56 mm | 33.53 [1.320] | 16.76 [.660] | 36.22 [1.426] | 32.16 [1.266] | 24 | 50 | 5-147384-5 |
| 10/11 | 56 mm | 27.18 [1.070] | 13.59 [.535] | 29.87 [1.176] | 25.81 [1.016] | 19 | 40 | 5-147384-4 |
| 10/11 | 44 mm | 20.83 [.820] | 10.41 [.410] | 23.52 [.926] | 19.46 [.766] | 14 | 30 | 5-147384-3 |
| 10/11 | 32 mm | 14.48 [.570] | 7.24 [.285] | 17.17 [.676] | 13.11 [.516] | 9 | 20 | 5-147384-2 |
| 10/11 | 32 mm | 8.12 [.320] | 4.06 [.160] | 10.82 [.426] | 6.75 [.266] | 4 | 10 | 5-147384-1 |
| 13 | SUPERSEDED BY 5-147384-9 | 88 mm | 65.28 [2.570] | 32.64 [1.285] | 67.97 [2.676] | 49 | 100 | 147384-9 |
| 13 | SUPERSEDED BY 5-147384-8 | 72 mm | 52.58 [2.070] | 26.29 [1.035] | 55.27 [2.176] | 39 | 80 | 147384-8 |
| 13 | SUPERSEDED BY 5-147384-7 | 72 mm | 46.23 [1.820] | 23.11 [.910] | 48.92 [1.926] | 34 | 70 | 147384-7 |
| 13 | SUPERSEDED BY 5-147384-6 | 72 mm | 39.88 [1.570] | 19.94 [.785] | 42.57 [1.676] | 29 | 60 | 147384-6 |
| 13 | | 56 mm | 33.53 [1.320] | 16.76 [.660] | 36.22 [1.426] | 24 | 50 | 147384-5 |
| 13 | | 56 mm | 27.18 [1.070] | 13.59 [.535] | 29.87 [1.176] | 19 | 40 | 147384-4 |
| 13 | | 44 mm | 20.83 [.820] | 10.41 [.410] | 23.52 [.926] | 14 | 30 | 147384-3 |
| 13 | | 32 mm | 14.48 [.570] | 7.24 [.285] | 17.17 [.676] | 9 | 20 | 147384-2 |
| 13 | SUPERSEDED BY 5-147384-1 | 32 mm | 8.12 [.320] | 4.06 [.160] | 10.82 [.426] | 4 | 10 | 147384-1 |

RECOMMENDED BOARD LAYOUT
SCALE: 5:1

THIS DRAWING IS A CONTROLLED DOCUMENT.

| | | | | | | |
|-------------------------|--|--------------------|---------------------|------------------------|--------------------|---|
| DIMENSIONS: mm [INCHES] | TOLERANCES UNLESS OTHERWISE SPECIFIED: | DRAWN BY: HAYMAKER | 28JAN00 | APPROVED BY: J. MOSIER | 28JAN00 | NAME: ASSY, RECEPTACLE, VRTCL, DOUBLE ROW, SRFC MOUNT, AMPMODU 50/50 GRID CONNECTOR |
| 0 PLC ± - | 1 PLC ± - | 2 PLC ± - | 3 PLC ± 0.13 [.005] | 4 PLC ± - | ANGLES ± - | PRODUCT SPEC: 108-1332 |
| MATERIAL: 8 | FINISH: SEE TABLE | WEIGHT: - | SIZE: A1 | CAGE CODE: 00779 | DRAWING NO: 147384 | RESTRICTED TO: - |
| CUSTOMER DRAWING | | | SCALE: 10:1 | SHEET: 1 of 1 | REV: E | |

X-ON Electronics

Largest Supplier of Electrical and Electronic Components

Click to view similar products for [Board to Board & Mezzanine Connectors](#) category:

Click to view products by [TE Connectivity](#) manufacturer:

Other Similar products are found below :

[589158040000018](#) [FCN-230C068-11](#) [FCN-268F012-G/BD](#) [FCN-268F036-G/BD](#) [FCN-268M012-G/0D](#) [FCN-268M024-G/1D](#) [FCN-723J004/1](#) [MIS-048-01-F-D-DP-K](#) [832-10-034-10-001000](#) [FX4C-80S-1.27DSA](#) [FCN-214Q030-G/0](#) [FCN-234P048-G/0](#) [FCN-235D050-G/C](#) [210-93-314-41-105000](#) [2-22603-0](#) [MDF7-40DP-2.54DSA\(55\)](#) [AXG720047](#) [5031084030](#) [MIT-114-03-F-D-K](#) [55323-1519](#) [DF33-2P-3.3DSA\(24\)](#) [YFT-20-05-H-03-SB-K](#) [503308-3040](#) [026-6203-PDB](#) [027-6203-PDB](#) [069159702701000](#) [10123981-102LF](#) [101A10019X](#) [55650-0588-C](#) [68684-306](#) [75140-7012](#) [589159005003045](#) [194261-1](#) [FCN-268F024-G0D](#) [10124054-515LF](#) [68685-603](#) [8-1616154-3](#) [MIS-019-01-F-D](#) [589159005002045](#) [541371078](#) [IL-WX-10PB-HF-B-E1000E](#) [FCN-268M024-G/3D](#) [20021832-06016C1LF](#) [KX15-20KLDL-E1000E](#) [MDF7-16DP-2.54DSA\(55\)](#) [AXE810124](#) [FCN-214J100-G/0](#) [FCN-230C068-E/S](#) [AXE812124](#) [AXE816124](#)