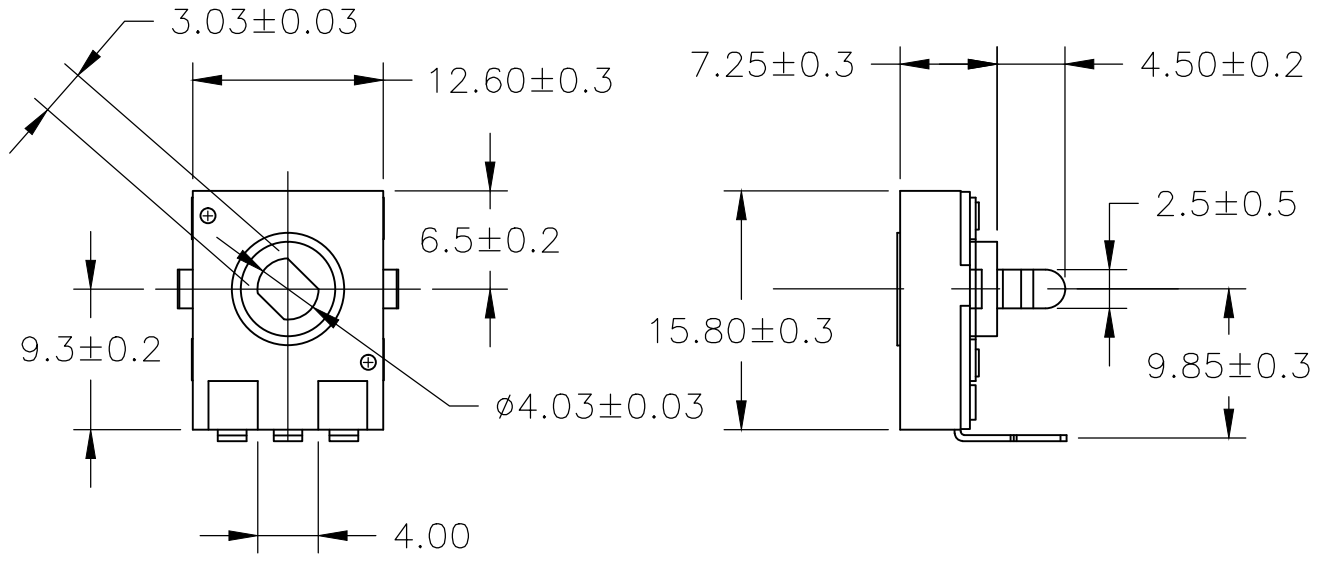
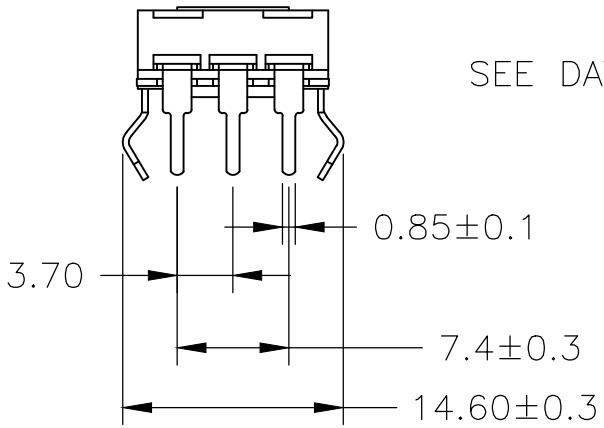


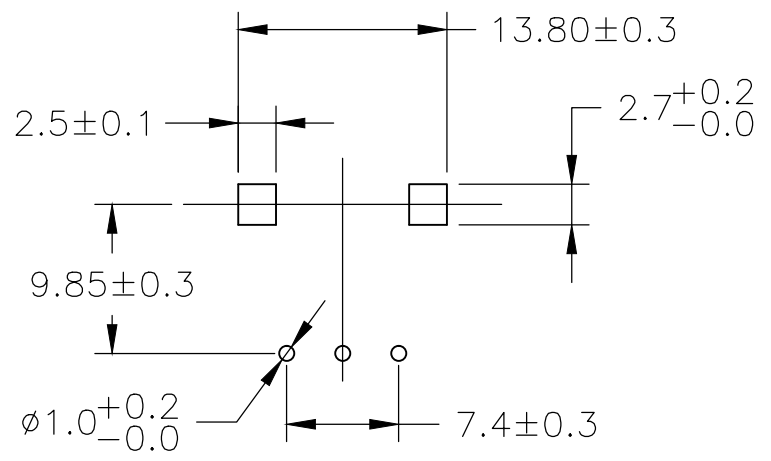
LOC	DIST	REVISIONS			DATE	DWN	APVD
—	—	P	LTR	DESCRIPTION			
		B3	ECR-15-000083		07JAN2015	KR	TN



FOR FURTHER INFORMATION  
SEE DATA SHEET FOR 51 SERIES-SPINDLE  
OPERATED POTENTIOMETER



PCB PIERCING PLAN



RoHS Compliant

THIS DRAWING IS UNPUBLISHED. By -  
 RELEASED FOR PUBLICATION, 2008. © COPYRIGHT 2008  
 ALL RIGHTS RESERVED.

DIMENSIONS: mm  TOLERANCES UNLESS OTHERWISE SPECIFIED: 0 PLC ± 0.5 1 PLC ± 0.2 2 PLC ± 0.1 3 PLC ± - 4 PLC ± - ANGLES ± 5°	DWN SUBHASH.M 01-Aug-08	MATERIAL -	FINISH -
	CHK PRAKASH.S 01-Aug-08	TE Connectivity	
APVD STEPHEN.P 01-Aug-08	NAME SPINDLE OPERATED POTENTIOMETER SERIES 51		
PRODUCT SPEC -	SIZE A4	CAGE CODE 00779	DRAWING NO C-1624191
APPLICATION SPEC -	RESTRICTED TO -		SCALE 2:1
WEIGHT -	CUSTOMER DRAWING		SHEET 1 OF 1 REV B3

## X-ON Electronics

Largest Supplier of Electrical and Electronic Components

*Click to view similar products for [Potentiometers](#) category:*

*Click to view products by [TE Connectivity](#) manufacturer:*

Other Similar products are found below :

[58C2-2](#) [590SX1N32F103SS](#) [591SXJ48S252SC](#) [591SXP56S252SC](#) [591SXP56S503SC](#) [D31409](#) [70B1G048K502X-A](#) [70B1M032S502W](#)  
[70B1N056S202W](#) [70B8N056F502W](#) [70J8N048S104U](#) [70L1N040P103W](#) [70L1N048P103X](#) [70L1N048S103W](#) [GA2L040S102UC](#)  
[GA2L040S103UC](#) [GS1G044P103UA](#) [GS1N048P103UA](#) [GS1T032S103UA](#) [A43-1500](#) [A43-20K](#) [A47-200K](#) [A4720K](#) [RA20LASD251A](#)  
[132-2-0-202](#) [132-0-0-202](#) [RK14K1220-F25-C0-A103](#) [RK14K1220F25C0C104](#) [RK14K1220-F25-C1-B103](#) [14910FAGJSX10102KA](#)  
[14910FBGLFY00103KA](#) [14910AABHSX10103KA](#) [14910FAGJSX10104KA](#) [152-01031](#) [C0342008 5K](#) [P270-109A](#) [J97589](#) [23M728](#)  
[248BBHS0XB25104MA](#) [RV170F-10-15R1-B500K-0021](#) [RV8NAYSB104A](#) [917523A](#) [A43-40](#) [A43-750](#) [A43S-5](#) [A47-15K](#) [A4750K](#)  
[SPPG048S103U](#) [SPPG056P103U](#) [SWE-10](#)