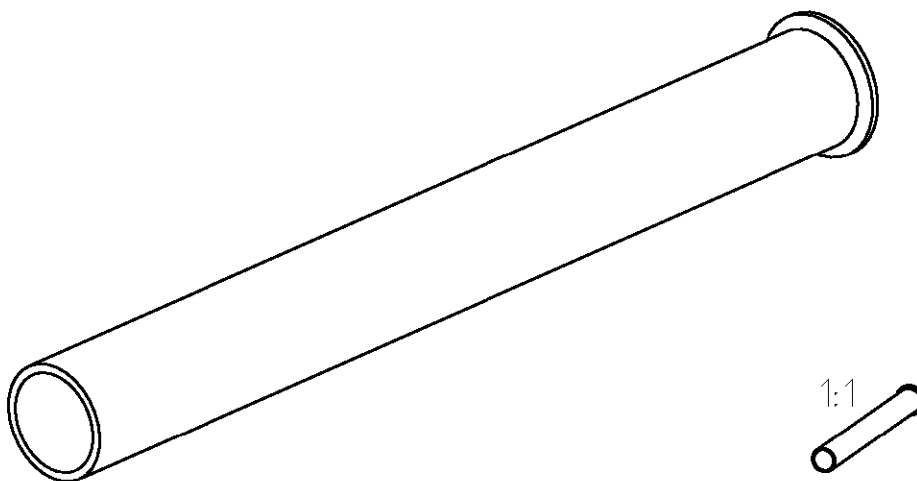


| LOC | DIST | REVISIONS | | | | |
|-----|------|-------------|--------------|---------|------|---|
| P | LTR | DESCRIPTION | DATE | DWN | APVD | |
| A1 | - | A | EGCO-0137-03 | 19MAY03 | ZA | - |
| | | | | | | |
| | | | | | | |
| | | | | | | |



FOR TOOL : 539972-1

2003

RELEASED FOR PUBLICATION

THIS DRAWING IS UNPUBLISHED.

BY TYCO ELECTRONICS CORPORATION. ALL RIGHTS RESERVED.

© COPYRIGHT 2003

| | | | | | | | | | | | |
|--|------------------|------------|-----------|--|-----|-----------|-------|------------|---------------|---------------|---|
| DIMENSIONS: mm | DWN | J. ZAJICEK | 23MAR2004 | MATERIAL | | FINISH | - | | | | |
| | CHK | - | - | tyco Electronics tyco Electronics AMP GmbH D - 64625 Bensheim | | | | | | | |
| TOLERANCES UNLESS OTHERWISE SPECIFIED: | APVD | - | - | | | | | | | | |
| 0 PLC ± | PRODUCT SPEC | - | - | NAME TUBE Rohr | | | | | | | |
| 1 PLC ± | APPLICATION SPEC | - | - | | | | | | | | |
| 2 PLC ± | WEIGHT | - | - | SIZE | A 4 | CAGE CODE | 00779 | DRAWING NO | C=5-1579007-0 | RESTRICTED TO | - |
| 3 PLC ± | CUSTOMER DRAWING | | | SCALE | 5:1 | SHEET | 1 | OF | 1 | REV | A |
| 4 PLC ± | | | | | | | | | | | |
| ANGLES ±° | | | | | | | | | | | |

X-ON Electronics

Largest Supplier of Electrical and Electronic Components

Click to view similar products for [Extraction, Removal & Insertion Tools](#) category:

Click to view products by [TE Connectivity](#) manufacturer:

Other Similar products are found below :

[M8196914-08](#) [768211-2](#) [809-131](#) [844751-2](#) [8-59558-2](#) [91018-1](#) [12014013](#) [12093647](#) [1-21048-0](#) [R282867020](#) [12093078](#) [1-21048-6](#)
[12121897](#) [DCF.91.405.5LT](#) [1322](#) [15314260](#) [15350698](#) [15350707](#) [15430130](#) [1579018-4](#) [1643916-1](#) [1-679532-0](#) [1976593-3](#) [OUTEXT-0321](#)
[2-1579008-3](#) [2-1579008-4](#) [229694-7](#) [231106-1](#) [241469](#) [91040-3](#) [91040-7](#) [965004-000](#) [965069-000](#) [1738219-1](#) [ET-JL05-16](#) [FG 0300 146](#)
[3000](#) [FIT-6](#) [210S048](#) [2-1579007-9](#) [231879-1](#) [312138-3](#) [RJ11FODE](#) [356-162](#) [M8196914-10](#) [4-1579018-0](#) [430395-001](#) [483249-1](#) [5-](#)
[1579007-2](#) [5-1579007-9](#) [BPR10](#)