

THIS DRAWING IS UNPUBLISHED.

RELEASED FOR PUBLICATION

ALL RIGHTS RESERVED.

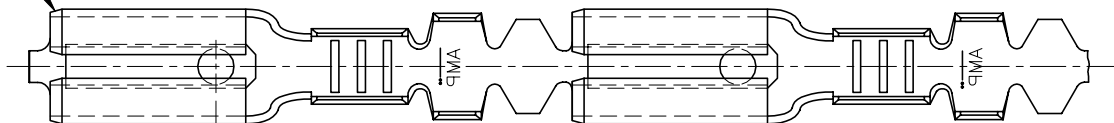
© COPYRIGHT - By -

REVISIONS

P	LTR	DESCRIPTION	DATE	DWN	APVD
	H	REVISED PER ECR-21-100133	10FEB2021	BDA	DH

- 1 SPLICE FREE, FOR AMP_D_MATOR.
- 2 BRIGHT PRE_TIN PLATED.
- 3 REELED WITH PAPER LAYER.
- 4 OBSOLETE PARTS: OBSOLETE CIS STREAMLINING PER D.RENAUD/D.SINISI
- 5 OBSOLETE.

CHAMFER



5.3
[.210]

2.2
[.086]

0.3
[.010]

6.3
[.250]

1.02 [.045] REF

0.5
[.020]
MAX

0.5
[.020]
MAX

14.0
[.550]

3.7
[.146]

0.8
[.032]

4	NONE	PHOSPH. BRONZE	3	6-160303-5
	TIN	BRASS	3	6-160303-4
4	2	PHOSPH. BRONZE		6-160303-3
	TIN-LEAD	PHOSPH. BRONZE		6-160303-2
4	TIN-LEAD	BRASS		6-160303-1
4	PRE-TIN	PHOSPH. BRONZE		6-160303-0
	PRE-TIN	BRASS		5-160303-9
4	TIN	BRASS	1	5-160303-8
	NONE	BRASS	1	5-160303-7
5	TIN	PHOSPH. BRONZE		5-160303-6
4	NONE	PHOSPH. BRONZE		5-160303-5
4	GOLD	BRASS		5-160303-4
	SILVER	BRASS		5-160303-3
	TIN	BRASS		5-160303-2
	NONE	BRASS		5-160303-1
	PLATING	MATERIAL		PART NUMBER

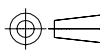
THIS DRAWING IS A CONTROLLED DOCUMENT.

DWN 6-3-1978

STE TE Connectivity

DIMENSIONS:
mm [INCHES]

TOLERANCES UNLESS
OTHERWISE SPECIFIED:



- 0 PLC ± -
- 1 PLC ± -
- 2 PLC ± -
- 3 PLC ± -
- 4 PLC ± -
- ANGLES ± -

CHK -

APVD 7-3-1978

NAME

.110 SRS FASTON RECEPTACLE
FOR 0.8mm TAB

PRODUCT SPEC

APPLICATION SPEC

WEIGHT -

SIZE CAGE CODE DRAWING NO RESTRICTED TO

A3 00779 C=160303

WIRE RANGE :
0.3-0.56mm²
(22-20 AWG)

INSUL-RANGE :
ø 1.3-2.0mm
(.050-.080)

MATERIAL -

FINISH -

CUSTOMER DRAWING

SCALE 6:1

SHEET 1 OF 1

REV H

X-ON Electronics

Largest Supplier of Electrical and Electronic Components

Click to view similar products for [Terminals](#) category:

Click to view products by [TE Connectivity](#) manufacturer:

Other Similar products are found below :

[00-054007-01074-6](#) [00-054007-70206-1](#) [00-054007-70210-8](#) [00-054007-70217-7](#) [00-054007-70226-9](#) [00-054007-70228-3](#) [00-054007-70248-1](#) [00-054007-70256-6](#) [00-054007-70301-3](#) [00-054007-70316-7](#) [0-0320562-0](#) [00-054007-49560-4](#) [00-054007-70209-2](#) [00-054007-70225-2](#) [00-054007-70227-6](#) [00-054007-70231-3](#) [00-054007-70241-2](#) [00-054007-70242-9](#) [00-054007-70244-3](#) [00-054007-70246-7](#) [00-054007-70263-4](#) [00-054007-70288-7](#) [00-054007-70290-0](#) [00-054007-70300-6](#) [00-054007-70304-4](#) [01-2065-1-0216](#) [01-2900-1-04412](#) [00581P0075](#) [600TS-10](#) [60205-1](#) [604200-1](#) [605601-1](#) [60598-1-CUT-TAPE](#) [61314-6-C](#) [61810-3](#) [61-S](#) [61-SN](#) [626-0194](#) [62-NBM-A](#) [62-SN](#) [62-SP](#) [63-S](#) [640179-1](#) [M55155/059I03](#) [M55155/079C01](#) [M55155/099H02](#) [M55155/109H01](#) [M55155/109H02](#) [M55155/12XH05](#) [M55155/16XH02](#)