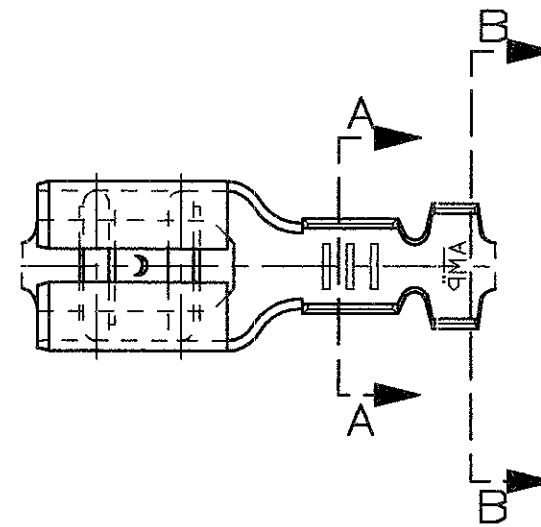
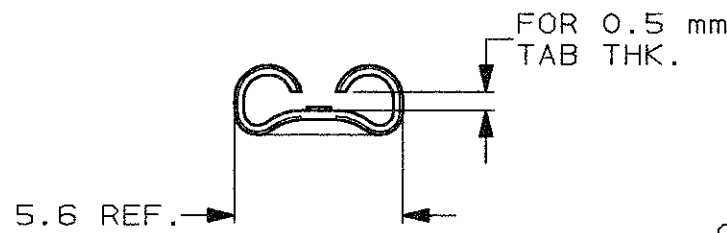
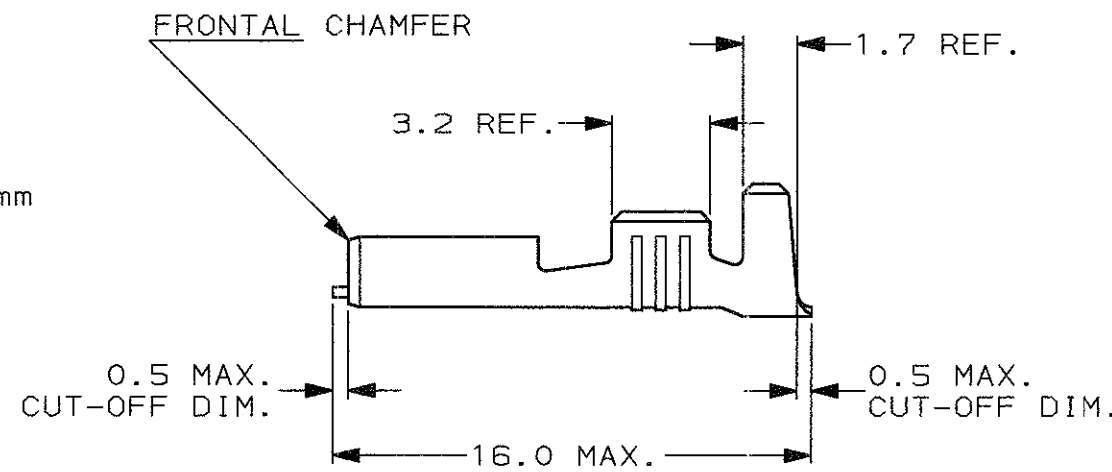


SCALA NON IMPEGNATIVA
(DO NOT SCALE)
DIMENSIONI IN mm
(DIMENSIONS IN IN)

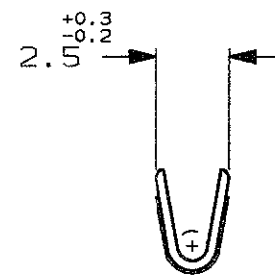
METRIC



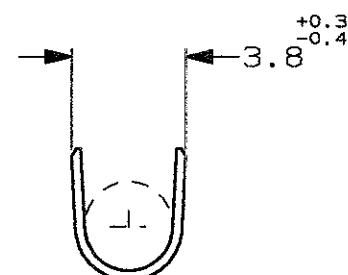
- 1) PER PEZZI IN NASTRO
VEDERE DISEGNO 160433
(FOR STRIP VERSION SEE DWG. 160433).
 - 2) CONFEZIONAMENTO IN ACCORDO ALLA
SPECIFICA AMP 107-20201.
(PACKAGING ACCORDING TO AMP SPEC. 107-20201)
- 3** OBSOLETE PARTS: OBSOLETE CIS STREAMLINING
PER D.RENAUD/D.SINISI



SEZIONE A-A
(SECTION A-A)



SEZIONE B-B
(SECTION B-B)



OBSOLETE 3	STAGNATO (TIN PLATED)	BRONZO FOSF. (PHOS. BRONZE)	5-160493-8	J
	PRE NICHELATO (PRE-NICKEL PL.)	ACCIAIO (STEEL)	5-160493-4	J
OBSOLETE	STAGNATO (TIN PLATED)	OTTONE (BRASS)	5-160493-2	J
	NUDO (PLAIN)	OTTONE (BRASS)	5-160493-1	J
	FINITURA / COLORE (FINISH / COLOUR)	MATERIALE (MATERIAL)	NUMERO (TE P/N)	REV

CUSTOMER DWG. FOR REFERENCE ONLY		DISEGNO PER CLIENTE SOLO PER RIFERIMENTO	
THIS DRAWING IS UNPUBLISHED		RELEASE FOR PUBLICATION 19	
© COPYRIGHT 19 BY TE INCORPORATED, HARRISBURG, PA. ALL INTERNATIONAL RIGHT RESERVED. TE PRODUCTS MAY BE COVERED BY U.S. AND FOREIGN PATENT AND/OR PATENT PENDING			
TOLLERANZE, SE NON DIVERSAMENTE SPECIFICATO (TOLERANCES, UNLESS OTHERWISE SPECIFIED)	DIAM. ISOLANTE (INS. DIA. RANGE)	RANGO FILO (WIRE RANGE)	SCALA (SCALE)
± 0.3	2.3-3.3	0.5-1.5	4:1
J2 ECR-10-022530	KK 11FEB11	ANGOLI (ANGLES) ± 2°	
J1 REVISED PER ECO-09-022178	KK 25SEP09	DIS. H. YAALI (DR.) 16 NOV 2000	
J	FIRST EMISSION ETOO-0198-01	CONT. C. TARTARI (CHK) 16 NOV 2000	
REV. (REV. DATE)	DIS. DATA (DR. DATE)	DESCRIZIONE (DESCRIPTION) FASTON Connector, .187" sr. REC. CONTACT (LOOSE PIECE VERSION)	
		LOC. SIZE NUMERO (DWG NO)	REV. FOGLIO (SHEET)
		I A3 C-160493	J2 1 DI (OF) 1

DISTRIBUZIONE (PRINT DIST.)

X-ON Electronics

Largest Supplier of Electrical and Electronic Components

Click to view similar products for [Terminals](#) category:

Click to view products by [TE Connectivity](#) manufacturer:

Other Similar products are found below :

[00-054007-01074-6](#) [00-054007-70206-1](#) [00-054007-70210-8](#) [00-054007-70217-7](#) [00-054007-70226-9](#) [00-054007-70228-3](#) [00-054007-70248-1](#) [00-054007-70256-6](#) [00-054007-70301-3](#) [00-054007-70316-7](#) [00-054007-49560-4](#) [00-054007-70209-2](#) [00-054007-70225-2](#) [00-054007-70227-6](#) [00-054007-70231-3](#) [00-054007-70241-2](#) [00-054007-70242-9](#) [00-054007-70244-3](#) [00-054007-70246-7](#) [00-054007-70263-4](#) [00-054007-70288-7](#) [00-054007-70290-0](#) [00-054007-70300-6](#) [00-054007-70304-4](#) [01-2065-1-0216](#) [01-2900-1-04412](#) [00581P0075](#) [600TS-10](#) [60205-1](#) [604200-1](#) [605601-1](#) [60598-1-CUT-TAPE](#) [61314-6-C](#) [61810-3](#) [61-S](#) [61-SN](#) [626-0194](#) [62-NBM-A](#) [62-SN](#) [62-SP](#) [63-S](#) [640179-1](#) [M55155/059I03](#) [M55155/079C01](#) [M55155/099H02](#) [M55155/109H01](#) [M55155/109H02](#) [M55155/12XH05](#) [M55155/16XH02](#) [M55155/29-5S](#)