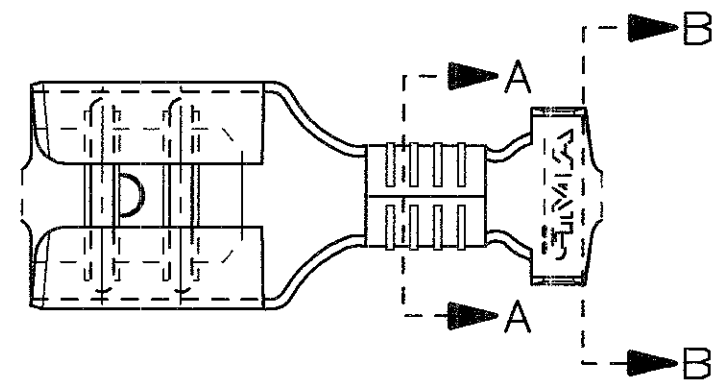
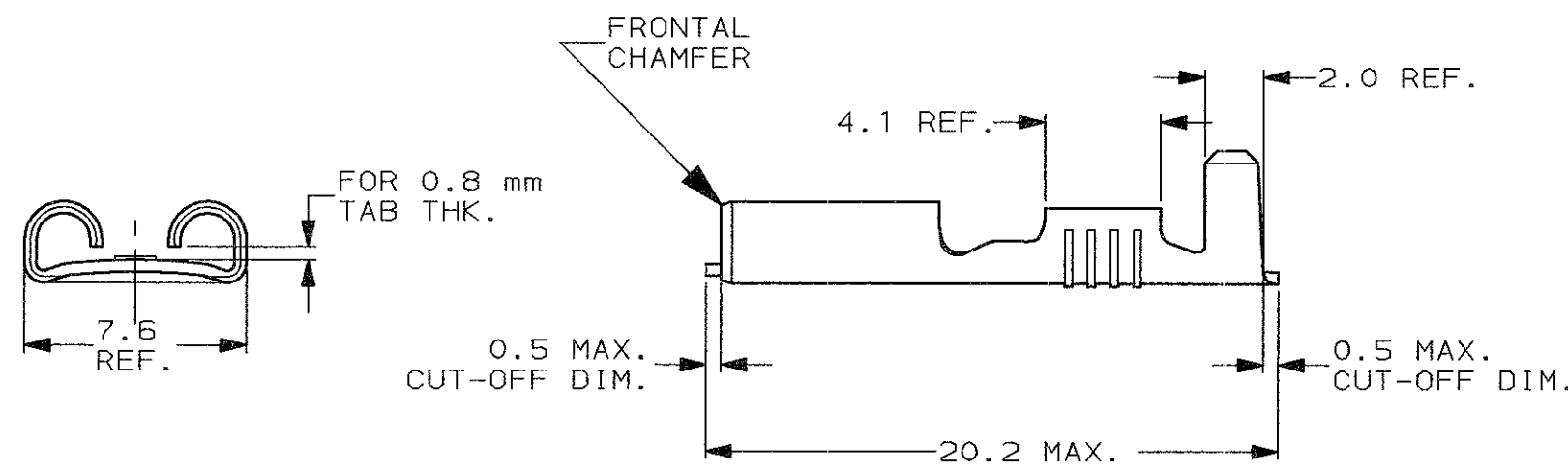


SCALA NON IMPEGNATIVA
(DO NOT SCALE)
DIMENSIONI IN mm
(DIMENSIONS IN)

METRIC



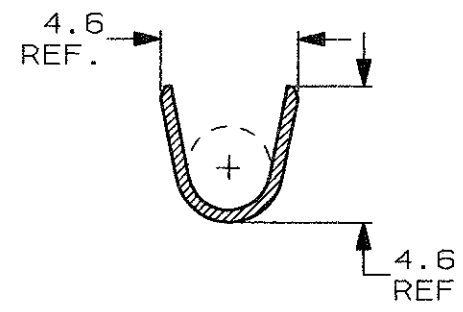
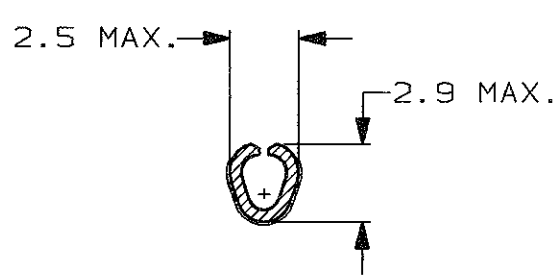
- 1) PER LE VERSIONI IN NASTRO
VEDERE DISEGNO 160432.
(FOR STRIP VERSION SEE DWG. 160432).
- 2) CONFEZIONATO IN ACCORDO ALLA
SPECIFICA AMP 107-20201.
(PACKAGED ACCORDING TO AMP SPEC. 107-20201).



SEZIONE A-A
(SECTION A-A)

SEZIONE B-B
(SECTION B-B)

INSULATION BARREL
NO PREFORMING REQUIRED



STAGNATO (TIN PLATED)	BRONZO FOS. (PHOS. BRONZE)	5-160506-8	J
NUDO (UNPLATED)	BRONZO FOS. (PHOS. BRONZE)	5-160506-7	J
ARGENTATO (SILVER PLATED)	OTTONE (BRASS)	5-160506-5	J
PRE NICHELATO (PRE-NICKEL PL.)	ACCIAIO (STEEL)	5-160506-3	J
STAGNATO (TIN PLATED)	OTTONE (BRASS)	5-160506-2	J
NUDO (UNPLATED)	OTTONE (BRASS)	5-160506-1	J
FINITURA / COLORE (FINISH / COLOUR)	MATERIALE (MATERIAL)	NUMERO (PART NUMBER)	REV

CUSTOMER DWG. FOR REFERENCE ONLY **DISEGNO PER CLIENTE SOLO PER RIFERIMENTO**

~~THIS DRAWING IS UNPUBLISHED~~ **RELEASE FOR PUBLICATION**

TOLLERANZE, SE NON DIVERSAMENTE SPECIFICATO (TOLERANCES, UNLESS OTHERWISE SPECIFIED)	DIAM. ISOLANTE (INS. DIA. RANGE)	RANGO FILO (WIRE RANGE)	SCALA (SCALE)
± 0.3	2.3-3.3	0.5-1.5	4:1
ANGOLI (ANGLES)	TE Connectivity		

DIS. H. YAALI (DR.) 17 OCT 2000
CONT. C. TARTARI (CHK) 17 OCT 2000

DESCRIZIONE (DESCRIPTION) **FASTON® Connector, .250" sr. REC. CONTACT (LOOSE PIECE VERSION)**

J1	REVISED PER ECO-11-005294	RK	09APR 11
REV. (REV. LTR.)	REVISIONI (REVISION RECORD)	DIS. DATA (DR)	DATA (DATE)

LOC. SIZE NUMERO (DWG NO) **IA3 C-160506** REV. **J1** FOGLIO (SHEET) **1** DI (OF) **1**

DISTRIBUZIONE (PRINT/DIST.)

X-ON Electronics

Largest Supplier of Electrical and Electronic Components

Click to view similar products for [Terminals](#) category:

Click to view products by [TE Connectivity](#) manufacturer:

Other Similar products are found below :

[HT-13-10](#) [71M-250-32-NB](#) [01-2065-1-0216](#) [00581P0075](#) [M10-10RX](#) [M10BCK](#) [60205-1](#) [604200-1](#) [60598-1-CUT-TAPE](#) [60617-1-C](#) [60873-1](#) [M14-516R/SK](#) [M14-6RSX](#) [M18-10FLX](#) [M18-8FBX](#) [M18-8R/LX](#) [M18BCK](#) [61314-6-C](#) [61-S](#) [61-SN-A](#) [62149-1](#) [62-NBM-A](#) [63-S](#) [640179-1](#) [640917-2-CUT-TAPE](#) [6501550002](#) [66107-2-C](#) [66107-4-C](#) [696683-1](#) [696834-1](#) [696861-1](#) [696931-1](#) [696999-1](#) [M8-516RK](#) [M86700006](#) [MA250DMFMX-A](#) [701-2007](#) [701-2307](#) [701-7761-03](#) [70F-110-32-PB](#) [718-N-A](#) [71M-187-20-NBL](#) [71M-250-32-NBL](#) [72F-187-20-NBL](#) [72M-250-32-NBL](#) [7310](#) [73F-250-32](#) [73F-250-32-NBL](#) [73F-250-32-NL](#) [F-1M](#)