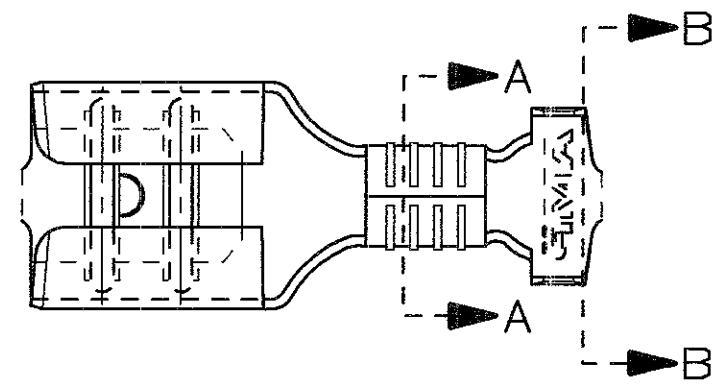
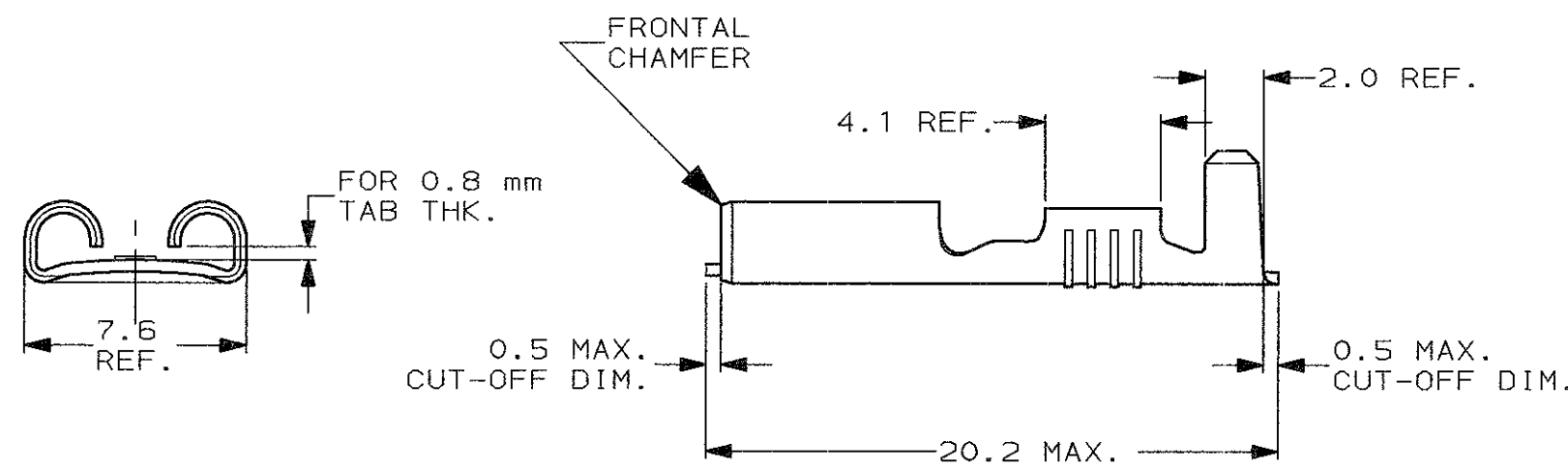


SCALA NON IMPEGNATIVA  
(DO NOT SCALE)  
DIMENSIONI IN mm  
(DIMENSIONS IN)

METRIC



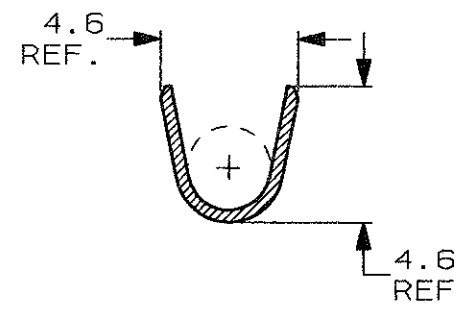
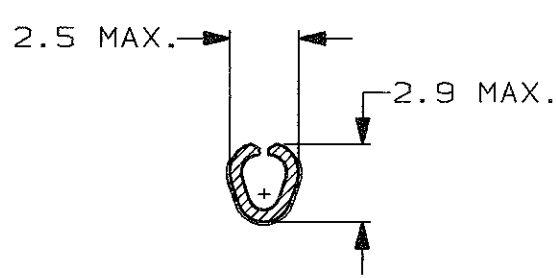
- 1) PER LE VERSIONI IN NASTRO  
VEDERE DISEGNO 160432.  
(FOR STRIP VERSION SEE DWG. 160432).
- 2) CONFEZIONATO IN ACCORDO ALLA  
SPECIFICA AMP 107-20201.  
(PACKAGED ACCORDING TO AMP SPEC. 107-20201).



SEZIONE A-A  
(SECTION A-A)

SEZIONE B-B  
(SECTION B-B)

INSULATION BARREL  
NO PREFORMING REQUIRED



|                                     |                            |                      |     |
|-------------------------------------|----------------------------|----------------------|-----|
| STAGNATO (TIN PLATED)               | BRONZO FOS. (PHOS. BRONZE) | 5-160506-8           | J   |
| NUDO (UNPLATED)                     | BRONZO FOS. (PHOS. BRONZE) | 5-160506-7           | J   |
| ARGENTATO (SILVER PLATED)           | OTTONE (BRASS)             | 5-160506-5           | J   |
| PRE NICHELATO (PRE-NICKEL PL.)      | ACCIAIO (STEEL)            | 5-160506-3           | J   |
| STAGNATO (TIN PLATED)               | OTTONE (BRASS)             | 5-160506-2           | J   |
| NUDO (UNPLATED)                     | OTTONE (BRASS)             | 5-160506-1           | J   |
| FINITURA / COLORE (FINISH / COLOUR) | MATERIALE (MATERIAL)       | NUMERO (PART NUMBER) | REV |

CUSTOMER DWG. FOR REFERENCE ONLY      DISEGNO PER CLIENTE SOLO PER RIFERIMENTO

THIS DRAWING IS UNPUBLISHED      RELEASE FOR PUBLICATION

|  |                                  |                         |               |
|--|----------------------------------|-------------------------|---------------|
| TOLLERANZE, SE NON DIVERSAMENTE SPECIFICATO (TOLERANCES, UNLESS OTHERWISE SPECIFIED) | DIAM. ISOLANTE (INS. DIA. RANGE) | RANGO FILO (WIRE RANGE) | SCALA (SCALE) |
| ± 0.3  | 2.3-3.3                          | 0.5-1.5                 | 4:1           |
| ANGOLI (ANGLES)  | ± 2°                             |                         |               |



DIS. H. YAALI (DR.) 17 OCT 2000      DESCRIZIONE (DESCRIPTION) FASTON® Connector, .250" sr. REC. CONTACT (LOOSE PIECE VERSION)

|                                    |      |      |                 |      |                |
|------------------------------------|------|------|-----------------|------|----------------|
| CONT. C. TARTARI (CHK) 17 OCT 2000 | LOC. | SIZE | NUMERO (DWG NO) | REV. | FOGLIO (SHEET) |
| J1 REVISED PER ECO-11-005294       | I    | A3   | C-160506        | J1   | 1 OF 1         |

|      |                             |                |             |
|------|-----------------------------|----------------|-------------|
| REV. | REVISIONI (REVISION RECORD) | DIS. DATA (DR) | DATA (DATE) |
| J1   | REVISI                      | RK             | 09APR 11    |

DISTRIBUZIONE (PRINT/DIST.)

## X-ON Electronics

Largest Supplier of Electrical and Electronic Components

*Click to view similar products for [Terminals](#) category:*

*Click to view products by [TE Connectivity](#) manufacturer:*

Other Similar products are found below :

[00-054007-01074-6](#) [00-054007-70206-1](#) [00-054007-70210-8](#) [00-054007-70217-7](#) [00-054007-70226-9](#) [00-054007-70228-3](#) [00-054007-70248-1](#) [00-054007-70256-6](#) [00-054007-70301-3](#) [00-054007-70316-7](#) [00-054007-49560-4](#) [00-054007-70209-2](#) [00-054007-70225-2](#) [00-054007-70227-6](#) [00-054007-70231-3](#) [00-054007-70241-2](#) [00-054007-70242-9](#) [00-054007-70244-3](#) [00-054007-70246-7](#) [00-054007-70263-4](#) [00-054007-70288-7](#) [00-054007-70290-0](#) [00-054007-70300-6](#) [00-054007-70304-4](#) [01-2065-1-0216](#) [01-2900-1-04412](#) [00581P0075](#) [600TS-10](#) [60205-1](#) [604200-1](#) [605601-1](#) [60598-1-CUT-TAPE](#) [61314-6-C](#) [61810-3](#) [61-S](#) [61-SN](#) [626-0194](#) [62-NBM-A](#) [62-SN](#) [62-SP](#) [63-S](#) [640179-1](#) [M55155/059I03](#) [M55155/079C01](#) [M55155/099H02](#) [M55155/109H01](#) [M55155/109H02](#) [M55155/12XH05](#) [M55155/16XH02](#) [M55155/29-5S](#)