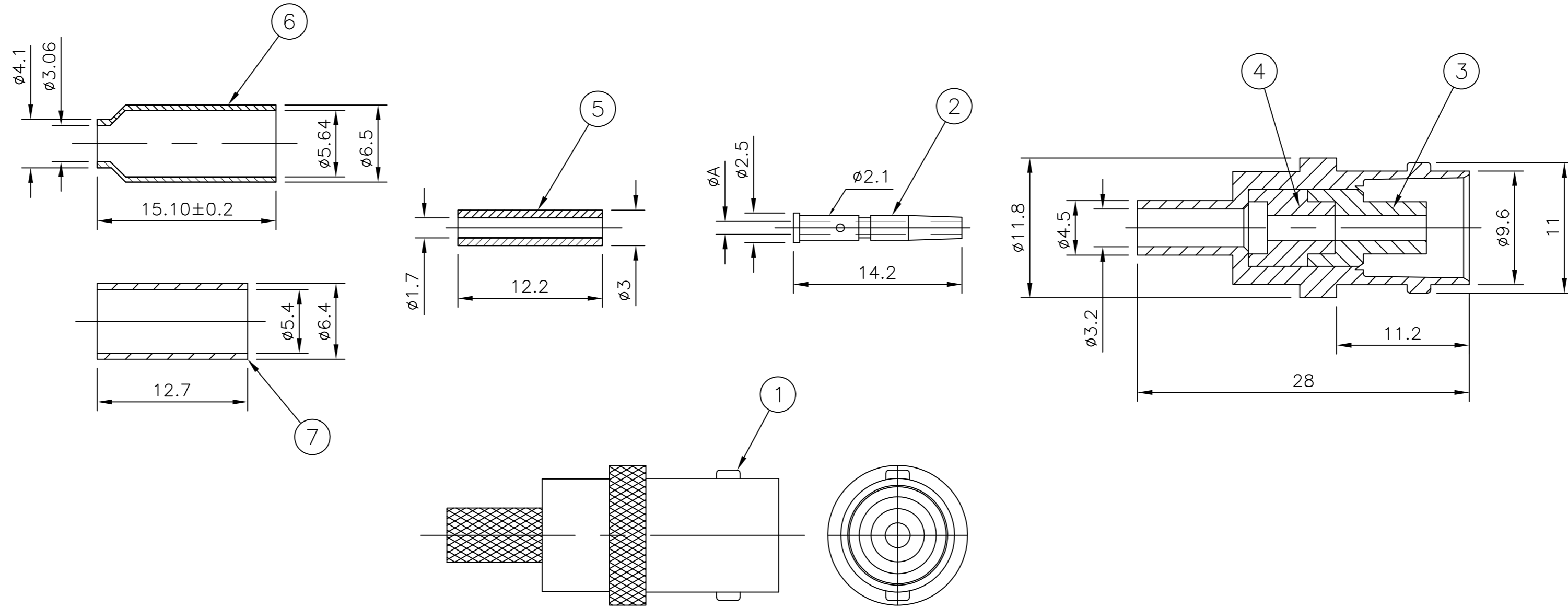


THIS DRAWING IS UNPUBLISHED. RELEASED FOR PUBLICATION JUNE , 2004.  
 © COPYRIGHT 2004 By - ALL RIGHTS RESERVED.

LOC	DIST	REVISIONS					
E	B	P	LTR	DESCRIPTION	DATE	DWN	APVD
		C1		ECO-09-023525	20 OCT 09	RITA	BOB
		D		ECO-12-014680	20Aug2012	TITAN	MARTIN

- NOTES**
- IP PACK: 1PC/ONE BAG, 100PCS/INNER BOX, 1000PCS/OUTER BOX
  - BULK PACK: 100PCS/ONE BAG, 100PCS/INNER BOX, 1000PCS/OUTER BOX
  - Au PLATING OVER Ni PLATING OVER Cu PLATING
  - Ni PLATING OVER Cu PLATING
  - HAND TOOL: 9-1478240-0
  - DIE SET: SEE TABLE
  - FOR TECHNICAL DATA REFER TO YOUR LOCAL TYCO ELECTRONICS SALES OFFICE
  - ALL DIMENSIONS ARE NOMINAL FOR REFERENCE ONLY UNLESS OTHERWISE STATED

				1.1	9-1478242-0	RG58C/U, 141A/U, URM43, 76, BELDEN 9907, KX 15			5-1634511-3
				1.1	9-1478242-0	RG58C/U, 141A/U, URM43, 76, BELDEN 9907, KX 15			5-1634511-2
				0.57	9-1478242-0	RG174A/U, 188A/U, 316/U, URM95, KX 3B, KX 22A			5-1634511-1
				0.57	9-1478242-0	RG174A/U, 188A/U, 316/U, URM95, KX 3B, KX 22A			5-1634511-0
				A	DIE SET	CABLE GROUPS			PART NO.



QTY	UNIT	DESCRIPTION	ITEM			
1	1	BRASS	CRIMP SLEEVE 7			
-	-	BRASS	CRIMP SLEEVE 6			
-	-	NYLON	PUSHER SLEEVE 5			
1	1	POLYMETHYLPENTENE	INSULATOR 4			
1	1	POLYMETHYLPENTENE	INSULATOR 3			
1	1	PHOSPHOR BRONZE	CONTACT 2			
1	1	ZINC ALLOY	BODY 1			
5	35	25	15	MATERIAL	DESCRIPTION	ITEM

THIS DRAWING IS A CONTROLLED DOCUMENT.		DWN RITA ZUO 24 Feb 09		
DIMENSIONS: MM		CHK ANSON MA 24 Feb 09		
TOLERANCES UNLESS OTHERWISE SPECIFIED:		APVD BOB ZHAO 24 Feb 09	NAME BNC STRAIGHT JACK CRIMP 50 OHM	
0 PLC ± 0.5		PRODUCT SPEC 108-112000	DRAWING NO	
1 PLC ± 0.3		APPLICATION SPEC SEE SHEET 2	SIZE A2	CAGE CODE 00779
2 PLC ± 0.2		WEIGHT -	DRAWING NO C=1634511	
3 PLC ± -		FINISH SEE TABLE	RESTRICTED TO -	
4 PLC ± -			SCALE NTS SHEET 1 OF 2 REV D	
ANGLES ± -				
MATERIAL SEE TABLE		CUSTOMER DRAWING		

1634511

THIS DRAWING IS UNPUBLISHED. RELEASED FOR PUBLICATION JUNE ,2004.  
 © COPYRIGHT 2004 By - ALL RIGHTS RESERVED.

LOC	DIST	REVISIONS			
P	LTR	DESCRIPTION	DATE	DWN	APVD
-	-	SEE SHEET 1	-	-	-

COMPONENTS

MAIN BODY (ITEM 1,3, & 4)	CONTACT (ITEM 2)	PUSHER SLEEVE (ITEM 5)	CRIMP FERRULES (ITEM 6 & 7)

ASSEMBLY INSTRUCTION

CABLES: RG58C/U, 141A/U, URM43, 76, BELDEN 9907, KX 15	CABLES: RG174A/U, 188A/U, 316/U, URM95, KX 3B, KX 22A
<p><b>STEP 1</b></p> <p>1. SLIDE METAL CRIMP FERRULE OVER CABLE</p>	<p><b>STEP 1</b></p> <p>1. SLIDE METAL CRIMP FERRULE OVER CABLE</p>
<p><b>STEP 2</b></p> <p>1. STRIP CABLE TO DIMENSIONS AS SHOWN</p>	<p><b>STEP 2</b></p> <p>1. STRIP CABLE TO DIMENSIONS AS SHOWN</p>
<p><b>STEP 3</b></p> <p>1. FIT CONTACT OVER CENTRE CONDUCTOR TO BUTT AGAINST DIELECTRIC.            2. CRIMP USING TOOL AS NOTES ON PAGE 1.</p> <p>RECOMMENDED CENTRE CONTACT A/F HEX</p>	<p><b>STEP 3</b></p> <p>1. SLIDE ITEM 10 PUSHER SLEEVE OVER DIELECTRIC BEFORE FITTING THE CONTACT.            2. FIT CONTACT OVER CENTRE CONDUCTOR TO BUTT AGAINST DIELECTRIC.            3. CRIMP USING TOOL AS NOTES ON PAGE 1.</p> <p>RECOMMENDED CENTRE CONTACT A/F HEX</p>
<p><b>STEP 4</b></p> <p>1. PRESS SUB-ASSEMBLY INTO BODY, UNTIL CONTACT IS FULLY LOCATED BY AN AUDIBLE CLICK.            2. ENSURE THAT KNURLED HOUSING INSERTS BETWEEN THE DIELECTRIC AND CABLE BRAID.</p>	<p><b>STEP 4</b></p> <p>1. PRESS SUB-ASSEMBLY INTO BODY, UNTIL CONTACT IS FULLY LOCATED BY AN AUDIBLE CLICK.            2. ENSURE THAT KNURLED HOUSING INSERTS BETWEEN THE PUSHER SLEEVE AND CABLE BRAID.</p>
<p><b>STEP 5</b></p> <p>1. SLIDE CRIMP FERRULE ALONG THE CABLE UNTIL IT BUTTS AGAINST THE HOUSING BODY.            2. CRIMP USING TOOL AS NOTED ON PAGE 1.            3. CRIMP DIMENSION AS SHOWN.</p> <p>RECOMMENDED CRIMP SLEEVE A/F HEX</p>	<p><b>STEP 5</b></p> <p>1. SLIDE CRIMP FERRULE ALONG THE CABLE UNTIL IT BUTTS AGAINST THE BODY HOUSING.            2. CRIMP USING TOOL AS NOTED ON PAGE 1.            3. CRIMP DIMENSION AS SHOWN.</p> <p>RECOMMENDED CRIMP SLEEVE A/F HEX</p>

THIS DRAWING IS A CONTROLLED DOCUMENT.

DWN	RITA ZUO	24 Feb 09
CHK	ANSON MA	24 Feb 09
APVD	BOB ZHAO	24 Feb 09

PRODUCT SPEC: 108-112000  
 APPLICATION SPEC: SHEET 2

TE Connectivity  
 BNC STRAIGHT JACK CRIMP  
 50 OHM

SIZE	CAGE CODE	DRAWING NO	RESTRICTED TO
A2	00779	C-1634511	-

CUSTOMER DRAWING SCALE: NTS SHEET: 2 of 2 REV: D

## **X-ON Electronics**

Largest Supplier of Electrical and Electronic Components

*Click to view similar products for [RF Connectors / Coaxial Connectors](#) category:*

*Click to view products by [TE Connectivity](#) manufacturer:*

Other Similar products are found below :

[8915-1511-000](#) [89674-0827](#) [6001-7071-019](#) [6002-7051-003](#) [6002-7551-202](#) [6059674-1](#) [619550-1](#) [630059-000](#) [M39030/3-01N](#) [6500-7071-046](#) [6769](#) [CX050L2AQ](#) [7002-1541-010](#) [7002-1542-011](#) [7004-1512-000](#) [7009-1511-004](#) [7010-1511-000](#) [7029-1511-060](#) [7101-1541-010](#) [7101-1571-002](#) [7145-1521-002](#) [7203-1571-003](#) [7209-1511-011](#) [7210-1511-015](#) [7210-1511-019](#) [73137-5015](#) [73216-2241](#) [73404-2300](#) [7405-1521-005](#) [7405-1521-802](#) [8527](#) [8547](#) [FS11V](#) [877931](#) [8808-1511-001](#) [9074-9513-000](#) [9101-9573-002](#) [910A205F](#) [9130-9573-002](#) [PL11SC-026](#) [PL375-33](#) [PL40-5](#) [PL74C-221](#) [PL75MC-217](#) [PL803-7](#) [1200690078](#) [1-201144-1](#) [R107003010W](#) [R110A172100](#) [R112186000](#)