



[Connectors](#) > [Card Edge Connectors & Sockets](#) > [IC Sockets](#) > [DIP Sockets](#)

4-1571551-4 ✓ ACTIVE

516-AG11D-ES-LF=500 DIP,AU/SN



Augat | Augat 500 Series

TE Internal #: 4-1571551-4

TE Internal Description: 516-AG11D-ES-LF=500 DIP,AU/SN

Alias #: 516-AG11D-ES-LF

DIP Socket Type : Closed Frame

Contact Fabrication : Stamped & Formed

Number of Positions : 16

Profile : Standard

Row-to-Row Spacing : 7.62 mm [.3 in]

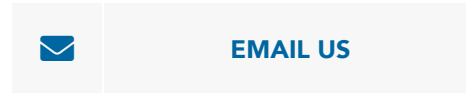
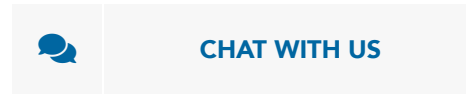
[Add to List](#) | [Similar Products](#)

[Compatible Parts & Tooling](#)



We are here to help!

Get in touch with our product experts.



Feedback

Features

Please review product documents or [contact us](#) for the latest agency approval information. Please Note: Use the Product Drawing for all design activity.

Product Type
Features

DIP Socket Type : **Closed Frame**
Profile : **Standard**
Row-to-Row Spacing : **7.62 mm [.3 in]**
Leg Style : **Straight**
Connector & Contact Terminates To : **Printed Circuit Board**
Product Type : **Socket**

Configuration
Features

Number of Positions : **16**
Number of Rows : **2**

Electrical
Characteristics

Contact Resistance (mΩ): **10**
Insulation Resistance (MΩ): **5000**

Body Features

Color : **Black**
Frame Style : **Closed**
Sleeve Plating Material : **Tin**
Sleeve Material : **Nickel**

Contact Features

Contact Base Material : **Beryllium Copper**
PCB Contact Termination Area Plating Material : **Tin**
Contact Fabrication : **Stamped & Formed**
Contact Mating Area Plating Material : **Gold**
Contact Mating Area Plating Thickness (μin): **25**
Contact Current Rating (Max) (A): **3**
Mating Contact Type : **Four-Fingered**
Contact Type : **Pin**
Socket Style : **Standard**
Socket Type : **DIP**





Termination Features

Contact Termination Type : **Through Hole**
Termination Post Length : **3.18 mm [.125 in]**

Mechanical Attachment

PCB Mount Retention : **Without**
Mounting Angle : **Vertical**
Connector Mounting Type : **Board Mount**
Mating Alignment : **With**
Mating Alignment Type : **Polarization**

Housing Features

Centerline (Pitch) : **2.54 mm [.1 in]**
Housing Material : **Thermoplastic**

Dimensions

Height Above PC Board : **4.57 mm [.18 in]**
Length (in): **.8**

Usage Conditions

Operating Temperature Range : **-55 – 105 °C [-67 – 221 °F]**

Operation/Application

Circuit Application : **Signal**

Industry Standards

UL Flammability Rating : **UL 94V-0**

Packaging Features

Packaging Quantity : **80**
Tubes per Box : **100**
Packaging Method : **Box & Tube, Tube**

Other

Quantity per Tube : 30

Comment : **Economy Series**

Compatible Parts

> [Contact Product Support](#)

Products with Similar Specs

[View All Similar Products](#)



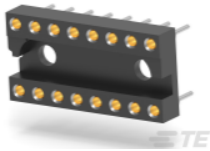
THIS PRODUCT

TOP RESULTS ?

DIP SOCKETS

[4-1571551-4](#)

516-AG11D-ES-LF=500 DIP, AU/SN



From **\$1.710**

In-Stock

DIP Socket Type : **Closed Frame**
Contact Fabrication : **Stamped & Formed**

Number of Positions : **16**

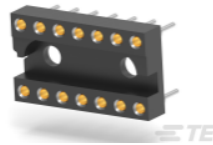
Profile : **Standard**

Row-to-Row Spacing : **7.62 mm**

DIP SOCKETS

[4-1571551-3](#)

514-AG11D-ES-LF=500 DIP, AU/SN



From **\$1.976**

In-Stock

DIP Socket Type : **Closed Frame**
Contact Fabrication : **Stamped & Formed**

Number of Positions : **14**

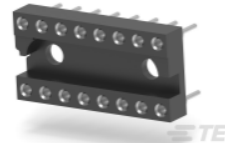
Profile : **Standard**

Row-to-Row Spacing : **7.62 mm**

DIP SOCKETS

[1571551-4](#)

516-AG12D-ES-LF=500 DIP, SN/SN



From **\$3.687**

In-Stock

DIP Socket Type : **Closed Frame**
Contact Fabrication : **Stamped & Formed**

Number of Positions : **16**

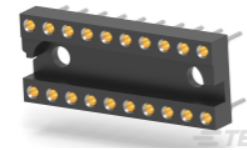
Profile : **Standard**

Row-to-Row Spacing : **7.62 mm**

DIP SOCKETS

[4-1571551-6](#)

520-AG11D-ES-LF=500 DIP, AU/S



From **\$2.622**

In-Stock

DIP Socket Type : **Closed Frame**
Contact Fabrication : **Stamped & Formed**

Number of Positions : **20**

Profile : **Standard**

Row-to-Row Spacing : **7.62 mm**

Feedback

X-ON Electronics

Largest Supplier of Electrical and Electronic Components

Click to view similar products for IC & Component Sockets category:

Click to view products by TE Connectivity manufacturer:

Other Similar products are found below :

[0066-3-17-15-30-14-02-0](#) [670](#) [672](#) [673](#) [694-13-640-00-672-000](#) [712-93-120-41-001000](#) [714-93-104-31-018000](#) [8059-4G1-LF](#) [807-22-001-10-001101](#) [807-22-001-10-006101](#) [807-22-001-30-011101](#) [807-22-001-30-012101](#) [807-22-001-30-013101](#) [807-22-001-30-014101](#) [8-1437531-4](#) [8150-6P10](#) [833-93-034-10-001000](#) [851-41-006-10-001000](#) [851-43-008-20-001000](#) [851-43-014-20-001000](#) [851-93-006-20-001000](#) [851-93-010-20-001000](#) [853-43-020-10-001000](#) [86.010.0053.0](#) [116-43-308-41-007000](#) [PX-68LCC](#) [121-13-318-41-001000](#) [121-13-320-41-001000](#) [121-13-308-41-001000](#) [123-43-314-41-801000](#) [123-43-420-41-001000](#) [122-13-316-41-001000](#) [123-13-624-41-001000](#) [123-43-306-41-001000](#) [12-3513-11](#) [123-91-320-41-001000](#) [126-43-310-41-002000](#) [AKSUN 37V-T](#) [1437503-9](#) [1437504-1](#) [146-44-308-41-013000](#) [146-43-308-41-012000](#) [160-10-308-00-001000](#) [160-40-320-00-001000](#) [214-99-306-01-670800](#) [232-1270-02-0602](#) [2-382761-4](#) [2-5331677-4](#) [2-640360-3](#) [2801-2-00-50-00-00-07-0](#)