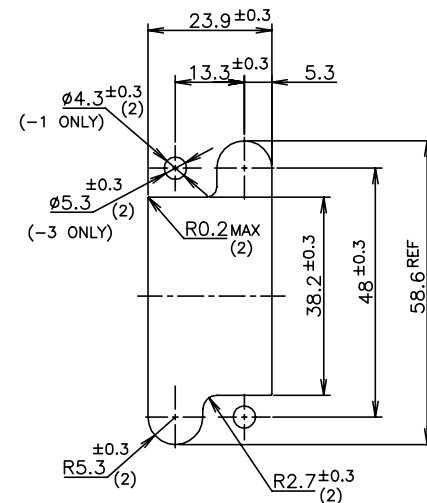
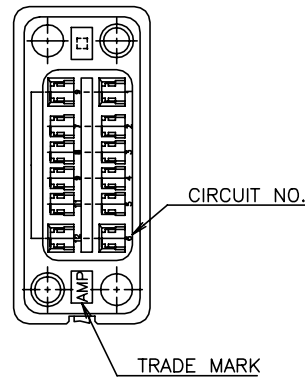
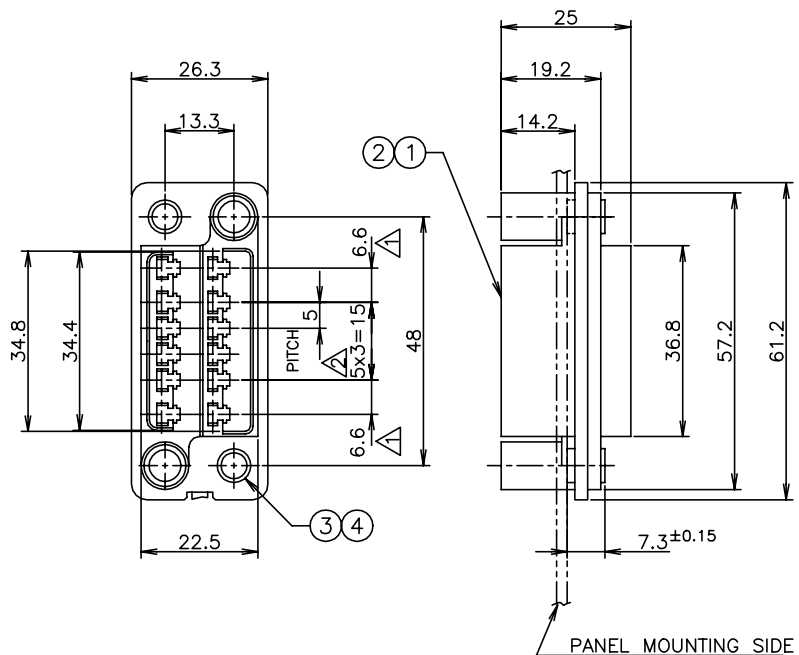


THIS DRAWING IS UNPUBLISHED. RELEASED FOR PUBLICATION JAN ,1979.

© COPYRIGHT 1979 BY TYCO ELECTRONICS CORPORATION. ALL RIGHTS RESERVED.

LOC	DIST	REVISIONS					
J		P	LTR	DESCRIPTION	DATE	DWN	APVD
		A1	RELEASED	ECR-21-001336	05FEB2021	J.J	N.S

-1, -3; AS SHOWN



THK 1.6±0.2  
RECOMMENDED PANEL CUTOUT DIM.

- △ FOR POWER CIRCUITS (4 POS)
- △ FOR SIGNAL CIRCUITS (8 POS)
- 3 ACCOMMODATED CONTACTS ARE  
STRIP P/N 170311, 170312, 170484  
L.P P/N 170313, 170314, 170485
- 4 MALE HSG P/N IS 172061
- △ MATERIAL:  
HOUSING: PBT 94V-0  
BUSH: PB FREE METAL
- △ FINISH:  
NICKEL PLATED PER AMP SPEC 112-25.

QTY REQD PER ASSY		PART NO	NAME	REMARKS	ITEM NO
2	+-	1-172065-3		(4mm)	④
+-	2	1-172065-1	FLOATING BUSH ASSY	(3mm)	③
1	+-	172062-3		(4mm)	②
+-	1	172062-1	DRAWER CONN FEMALE HSG	12 POS (3mm)	①

THIS DRAWING IS A CONTROLLED DOCUMENT.

DWN C.ZHU 15AUG05	<b>tyco</b> <b>Electronics</b>	Tyco Electronics AMP K.K.	
CHK I.WANG 15AUG05		Kawasaki, Japan	
APVD S.YAO 15AUG05	PRODUCT SPEC	NAME	
APPLICATION SPEC	12POS FEMALE HSG ASSY DRAWER CONNECTOR		
WEIGHT	SIZE A3	CAGE CODE 00779	DRAWING NO C=5172069
MATERIAL △	CUSTOMER DRAWING		RESTRICTED TO -
FINISH △	SCALE 1:1	SHEET 1 OF 1	REV A1

## X-ON Electronics

Largest Supplier of Electrical and Electronic Components

*Click to view similar products for [Heavy Duty Power Connectors](#) category:*

*Click to view products by [TE Connectivity](#) manufacturer:*

Other Similar products are found below :

[647757-1](#) [6643411-1](#) [6646058-2](#) [6646137-1](#) [6646138-1](#) [6646479-1](#) [6646608-1](#) [6646786-1](#) [6646940-1](#) [6651091-1](#) [6651525-1](#) [6651529-1](#)  
[6651788-1](#) [696475-1](#) [702-32-01109](#) [703-25-02205](#) [73000005059](#) [73000005642](#) [73080255059](#) [73080965046](#) [765-15-0080A](#) [765-16-0080B](#)  
[765-18-0080D](#) [829992-1](#) [902-77-02113](#) [PS00/A0620/6300](#) [PS25/A0420/63](#) [129-1J](#) [1409400](#) [AN0024023](#) [E6374G1](#) [e6389g2](#) [157-43GW8](#)  
[MS3117-14AC](#) [1643543-1](#) [1650540-1](#) [1651811-2](#) [1766260-1](#) [1766282-1](#) [1766966-1](#) [1791340000](#) [NLDFT-3-BL-L-S120-M40A](#) [NLDFT-N-](#)  
[W-L-C240-M40B](#) [NLS-2-R-C240-M40B](#) [NLS-N-W-C240-M40B](#) [NPS-3-BL-T6](#) [1986615-1](#) [2-1589900-8](#) [2199314-1](#) [KA8102](#)