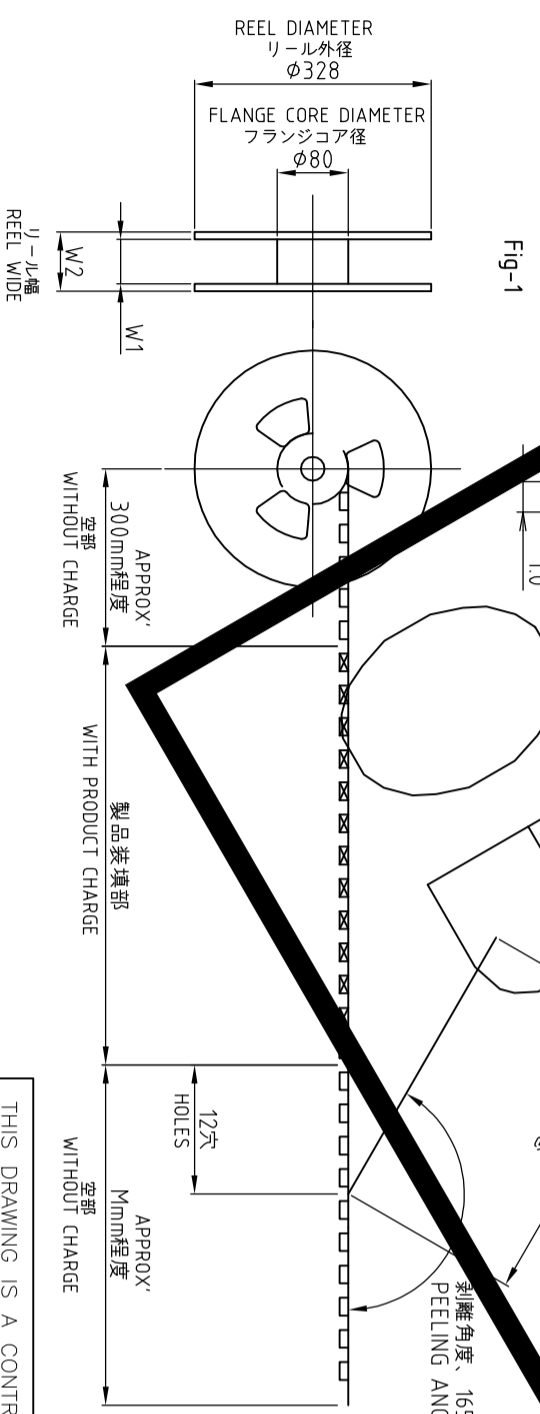
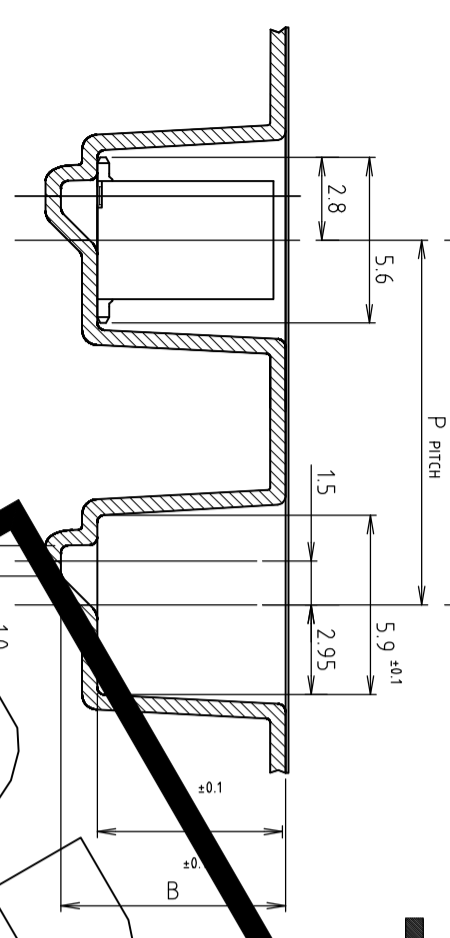
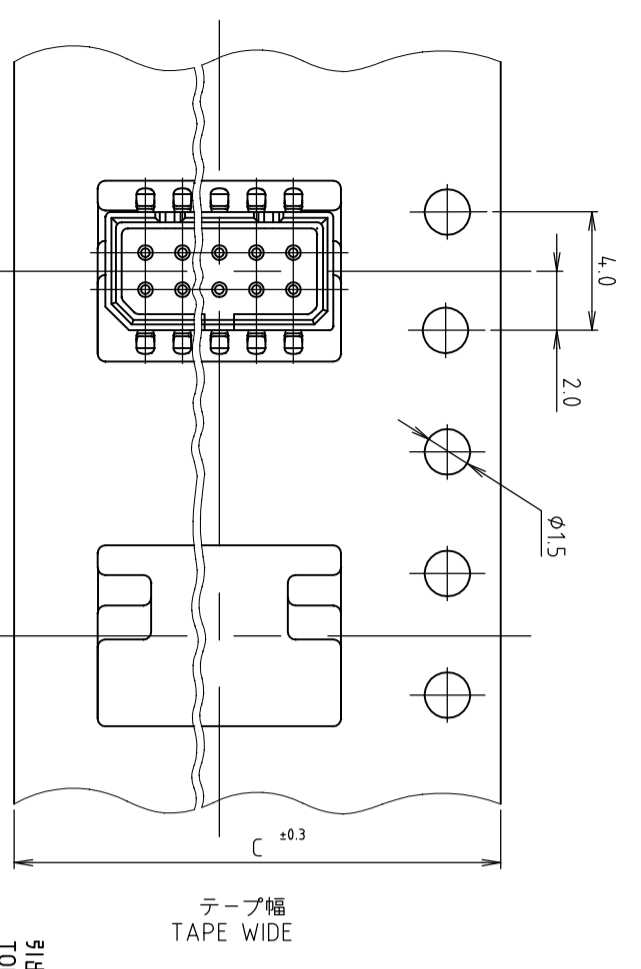


THIS DRAWING IS UNPUBLISHED.

RELEASED FOR PUBLICATION
ALL RIGHTS RESERVED.

REVISIONS

P	LTR	DESCRIPTION	DATE	DWN	APVD
C1		REVISED PER ECO-18-004113	15MAR18	R.L	H.L



引出し方向
TOP OF REEL

WEEEDING THE COVER TAPE
AROUND THE OUTER PERIPHERY
IN A TURN

カバ-テープ
リ-ル外周部
外周巻部

剥離角度 165°~180°
PEELING ANGLE

注記
1. 包装規格:107-5123-5

NOTE
1. PACKAGING SEPC:107-5123-5

鉛フリー
LEAD FREE

OBSELETE	29	26	300	12	24	7.45	6.25	7.25	650	24	6-	2	2-178041-4	5-	4
W ₂		W ₁	M	P	C	B	A		数量 QTY/PANEL	箱数 Pcs	エ-ボ-子-子 EMISS TUBE P/N		コネクタ部 CONNECTOR P/N	リ-ル巻部 TANG P/N	

THIS DRAWING IS A CONTROLLED DOCUMENT.

DIMENSIONS: mm

TOLERANCES UNLESS OTHERWISE SPECIFIED:

φ-PLC	±
1-PLC	±
2-PLC	±
3-PLC	±
4-PLC	±
ANGLES	±

FINISH

MATERIAL

DWN S.KANEKI 28MAY92

CHK J.TANIGAWA 28MAY92

APVD S.KUBOUCHI 30SEP92

PRODUCT SPEC

APPLICATION SPEC

WEIGHT 0.000000

CUSTOMER DRAWING



TE Connectivity Ltd.

1.25 F-P CONNECTOR

(B-TO-B) DOUBLE ROW POST HDR ASS'Y

SIZE	A3	CAGE CODE	00779	DRAWING NO	177595	RESTRICTED TO	
------	----	-----------	-------	------------	--------	---------------	--

SCALE		SHEET	1 of 1	REV	C1
-------	--	-------	--------	-----	----

X-ON Electronics

Largest Supplier of Electrical and Electronic Components

Click to view similar products for [Board to Board & Mezzanine Connectors](#) category:

Click to view products by [TE Connectivity](#) manufacturer:

Other Similar products are found below :

[10135583-642402LF](#) [89885-310LF](#) [589158040000018](#) [6-1393048-0](#) [68683-613](#) [MDF7-12DP-2.54DSA](#) [MDF7-18P-2.54DSA\(01\)](#) [MDF7-20DP-2.54DSA](#) [MDF7-26D-2.54DSA\(55\)](#) [MDF7-3P-2.54DSA\(01\)](#) [MDF7B-20P-2.54DSA\(01\)](#) [MDF7B-3P-2.54DSA\(55\)](#) [MDF7C-18P-2.54DSA\(55\)](#) [MDF7P-5P-2.54DSA\(55\)](#) [75234-0516](#) [FCN-230C068-11](#) [FCN-268F012-G/BD](#) [FCN-268F036-G/BD](#) [FCN-268M012-G/0D](#) [FCN-268M024-G/1D](#) [FCN-360C008-C](#) [FCN-723J004/1](#) [MIS-048-01-F-D-DP-K](#) [832-10-034-10-001000](#) [93696-325LF](#) [11828-1FA](#) [AXK630345P](#) [18097-0013](#) [2007042-2](#) [304400-2](#) [FCN-214Q030-G/0](#) [FCN-215Q040-G/0](#) [FCN-230C068-ESA](#) [FCN-234P048-G/0](#) [FCN-235D050-G/C](#) [FCN-360A3](#) [FCN-360C040-B](#) [210-93-314-41-105000](#) [2-22603-0](#) [379-064-521-202](#) [MDF7-12P-2.54DSA\(01\)](#) [MDF7-16P-2.54DS\(56\)](#) [MDF7-16P-2.54DSA\(55\)](#) [MDF7-40DP-2.54DSA\(55\)](#) [MDF7-8P-2.54DSA\(55\)](#) [AXG720047](#) [5031084030](#) [55323-1519](#) [DF33-2P-3.3DSA\(24\)](#) [DF33-2S-3.3C](#)