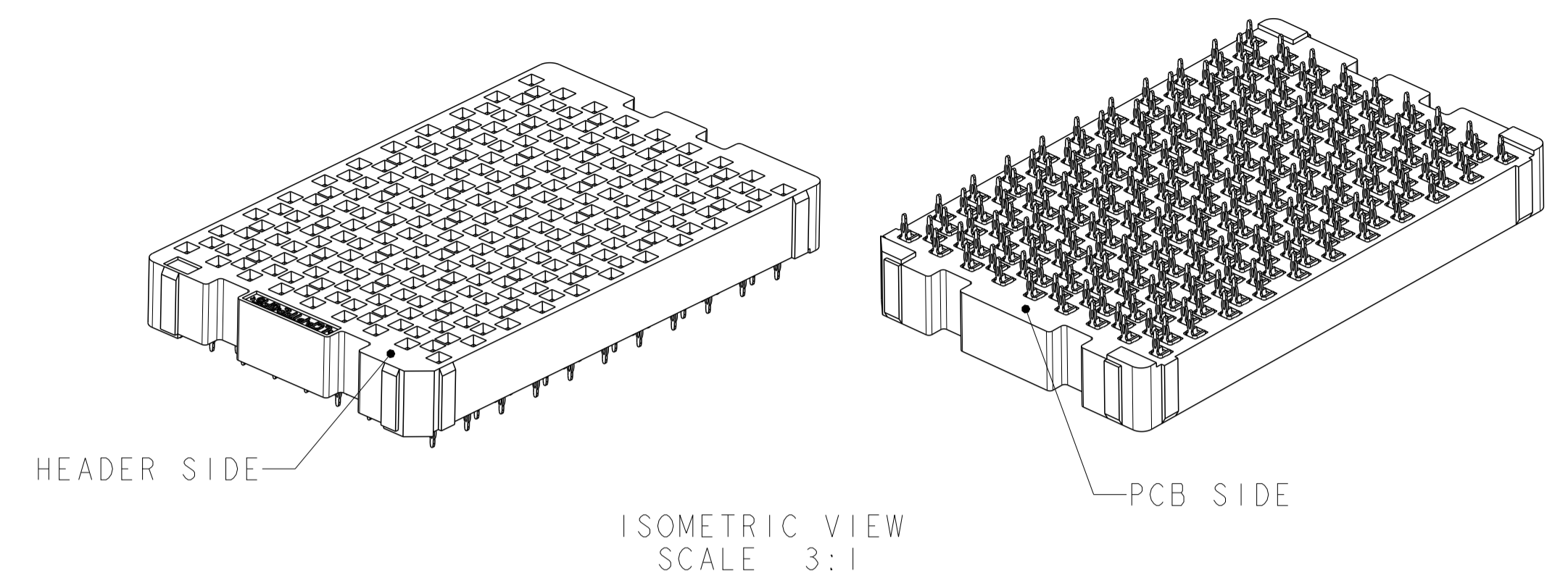
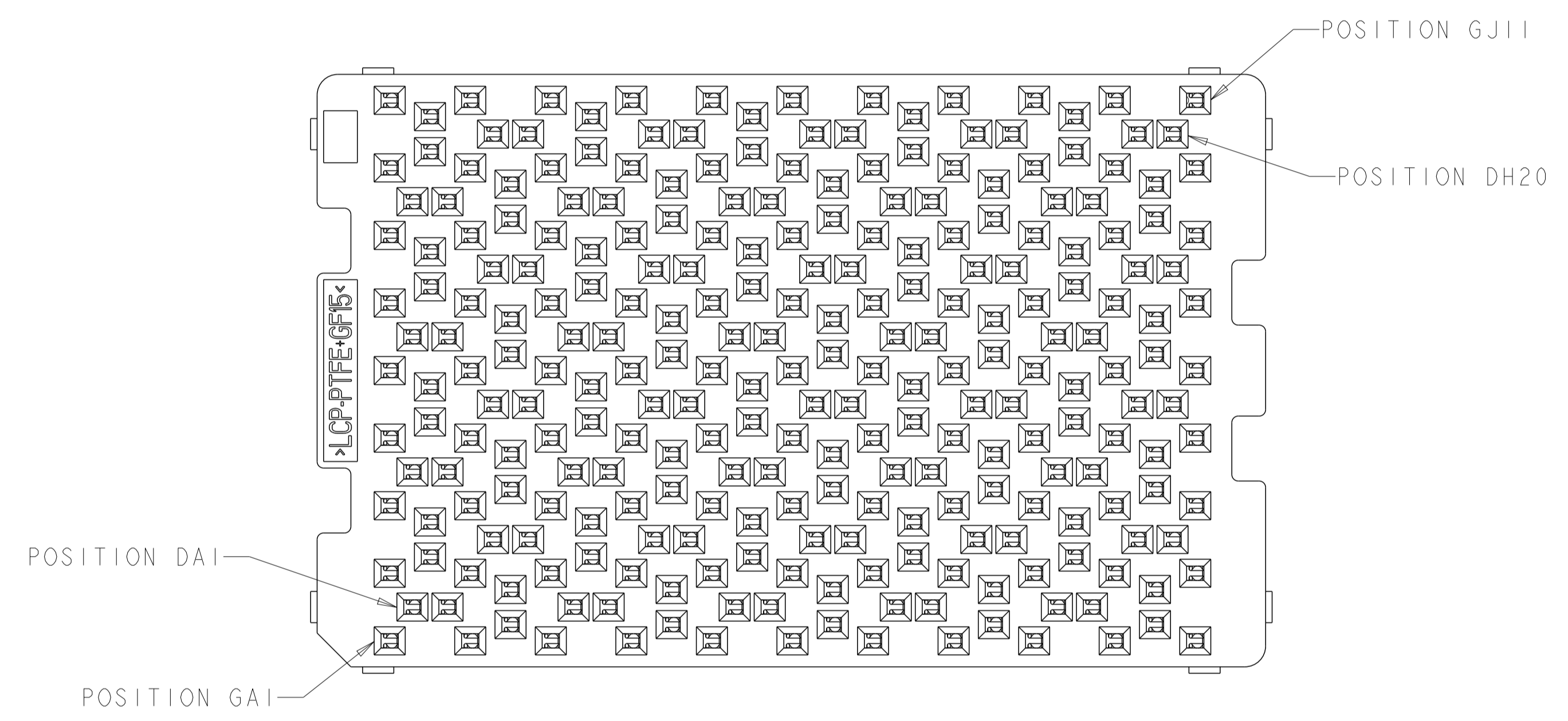


LOC	DIST	REVISIONS					
		P	LTN	DESCRIPTION	DATE	DWN	APVD
GP	00	A		REVISED PER ECO-12-018201	17OCT2012	KH	MH

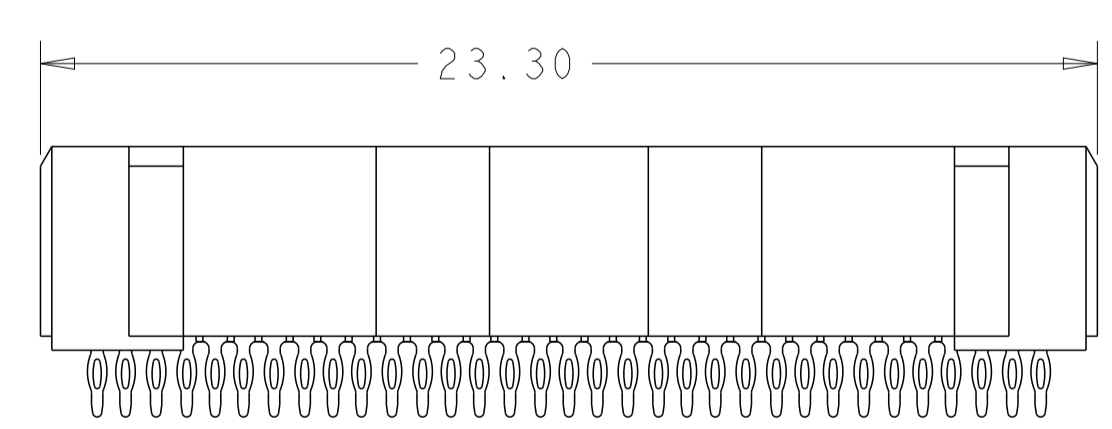
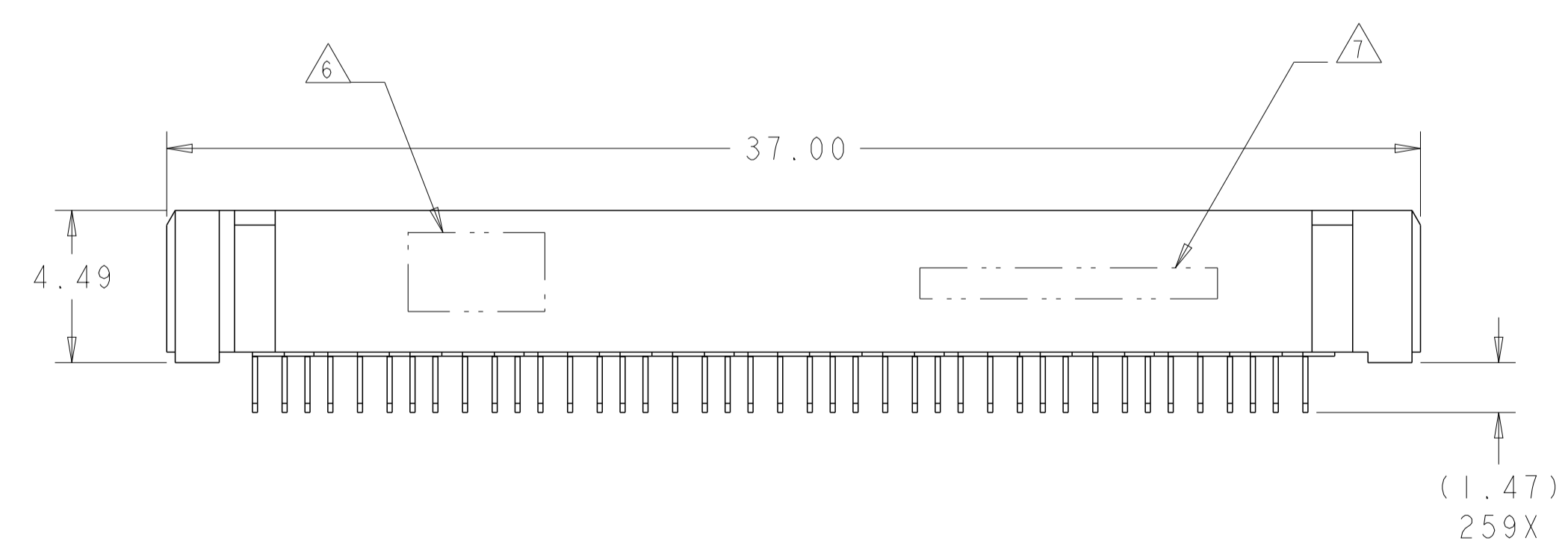


- 1 MATERIAL:
HOUSING: THERMOPLASTIC, FLAMMABILITY RATING UL94-VO
CONTACT: COPPER ALLOY
- 2 CONTACT PLATING: 0.076µm MIN GOLD OVER 0.69µm MIN PALLADIUM NICKEL, OVER 2.54-5.08µm NICKEL ON MATING AREA. 0.50-2.54µm 93/7 TIN-LEAD, OVER 1.27-5.08µm NICKEL ON TAIL AREA. PORE BLOCKER APPLIED TO MATING AREA.
- 3 CONTACT PLATING: 0.076µm MIN GOLD OVER 0.69µm MIN PALLADIUM NICKEL, OVER 2.54-5.08µm NICKEL ON MATING AREA. 0.50-2.54µm MATTE TIN, OVER 1.27-5.08µm NICKEL ON TAIL AREA. PORE BLOCKER APPLIED TO MATING AREA.
- 4 ROWS GA THRU GJ (SHOWN DARKENED) ARE TYPICALLY USED AS GROUNDS.
- 5 SPECIFIED POSITIONAL TOLERANCE DEFINES HOLE TO HOLE LOCATION WITHIN HOLE PATTERN. POSITIONAL TOLERANCE OF HOLE PATTERN TO FIDUCIAL MARKS OR PCB DATUMS SHALL BE DEFINED BY CUSTOMER.
- 6 AREA RESERVED FOR TE CONNECTIVITY LOGO.
- 7 AREA RESERVED FOR PART NUMBER (X-XXXXXX-X) AND DATE CODE (YYWW).
- 8 USE CENTERLINES INDICATED ON PCB HOLE PATTERN TO ESTABLISH ALIGNMENT BETWEEN HEADER AND RECEPTACLE BOARDS.
- 9 PLATED THROUGH HOLE REQUIREMENTS:
HOLE SIZE PRIOR TO PLATING = $\varnothing 0.420 \pm 0.013$
COPPER PLATING THICKNESS = 0.038 ± 0.013
CALCULATED FINISHED HOLE SIZE = $\varnothing 0.344 \pm 0.039$
THESE DIMENSIONS APPLY TO THE TOP 1.25mm OF THE PCB THICKNESS FROM THE CONNECTOR MOUNTING SIDE.



SIZE 2 HOUSING *
80 DIFFERENTIAL PAIRS
259 TOTAL SIGNAL CONTACTS

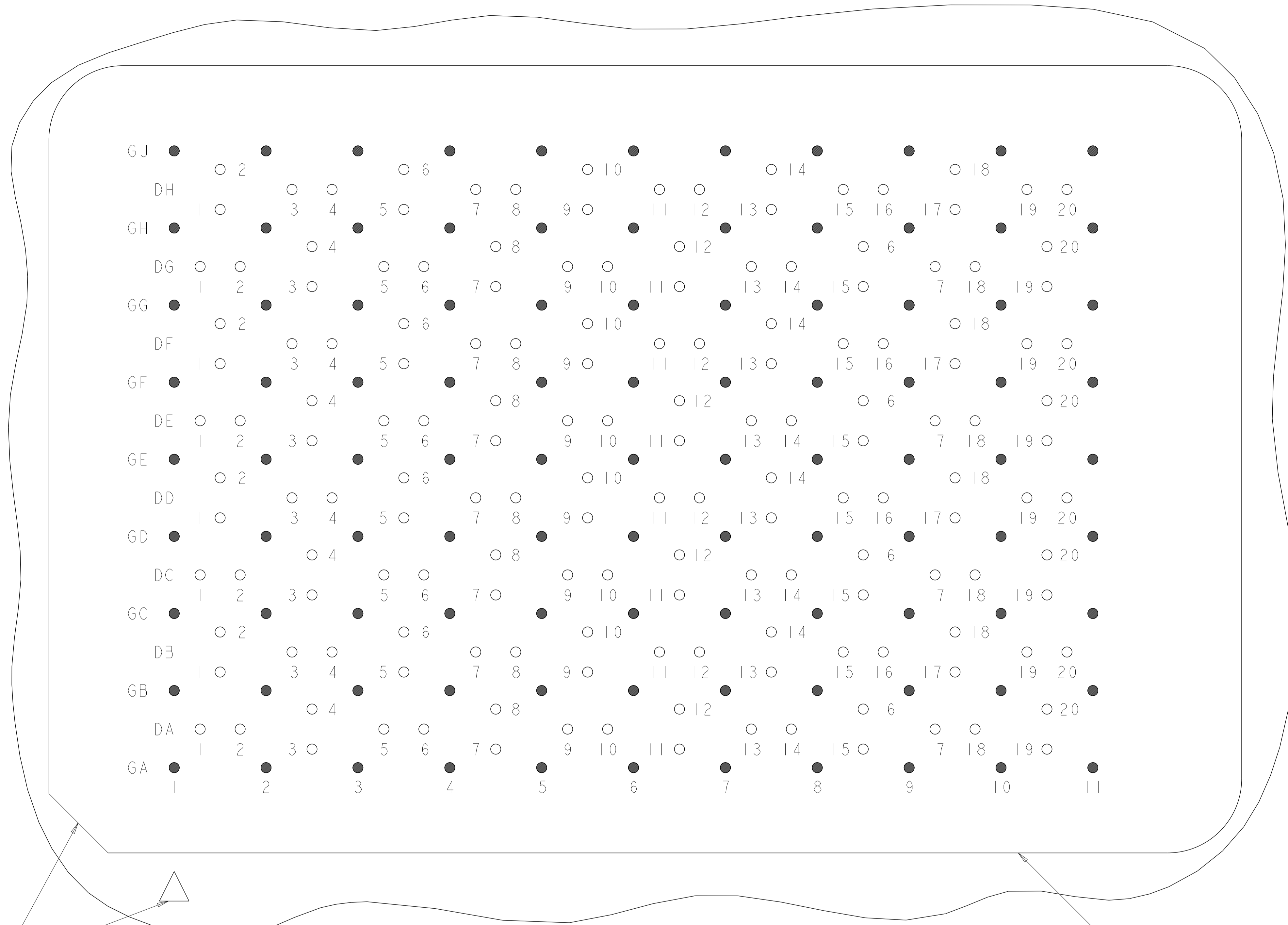
* SIZE 1 AND SIZE 3 ARE ALSO AVAILABLE



3	YES	MATTE Sn	5-2057361-1
2		Sn/Pb	2057361-1
FINISH	TOOLED	CONTACT TAIL PLATING	PART NUMBER

THIS DRAWING IS A CONTROLLED DOCUMENT.		DWN D. RINGLER 03SEP2008	TE Connectivity	
DIMENSIONS:		CHK D. TROUT 03SEP2008	RECEPTACLE ASSEMBLY	
mm		APVD J. FEDDER 03SEP2008	80/259 SIGNAL	
TOLERANCES UNLESS OTHERWISE SPECIFIED:		PRODUCT SPEC	STRADA MESA MEZZANINE CONNECTOR	
0 PLC ±		108-2375	SIZE CAGE CODE DRAWING NO RESTRICTED TO	
2 PLC ±0.13		APPLICATION SPEC	A100779C=2057361	
3 PLC ±0.013		114-13249	SCALE 6:1 SHEET 1 OF 3 REV A	
4 PLC ±		WEIGHT		
ANGLES ±		Customer Drawing		
FINISH				


LOC	DIST	REVISIONS			
P	LTN	DESCRIPTION	DATE	OWN	APVD
-	-	SEE SHEET 1	-	-	-



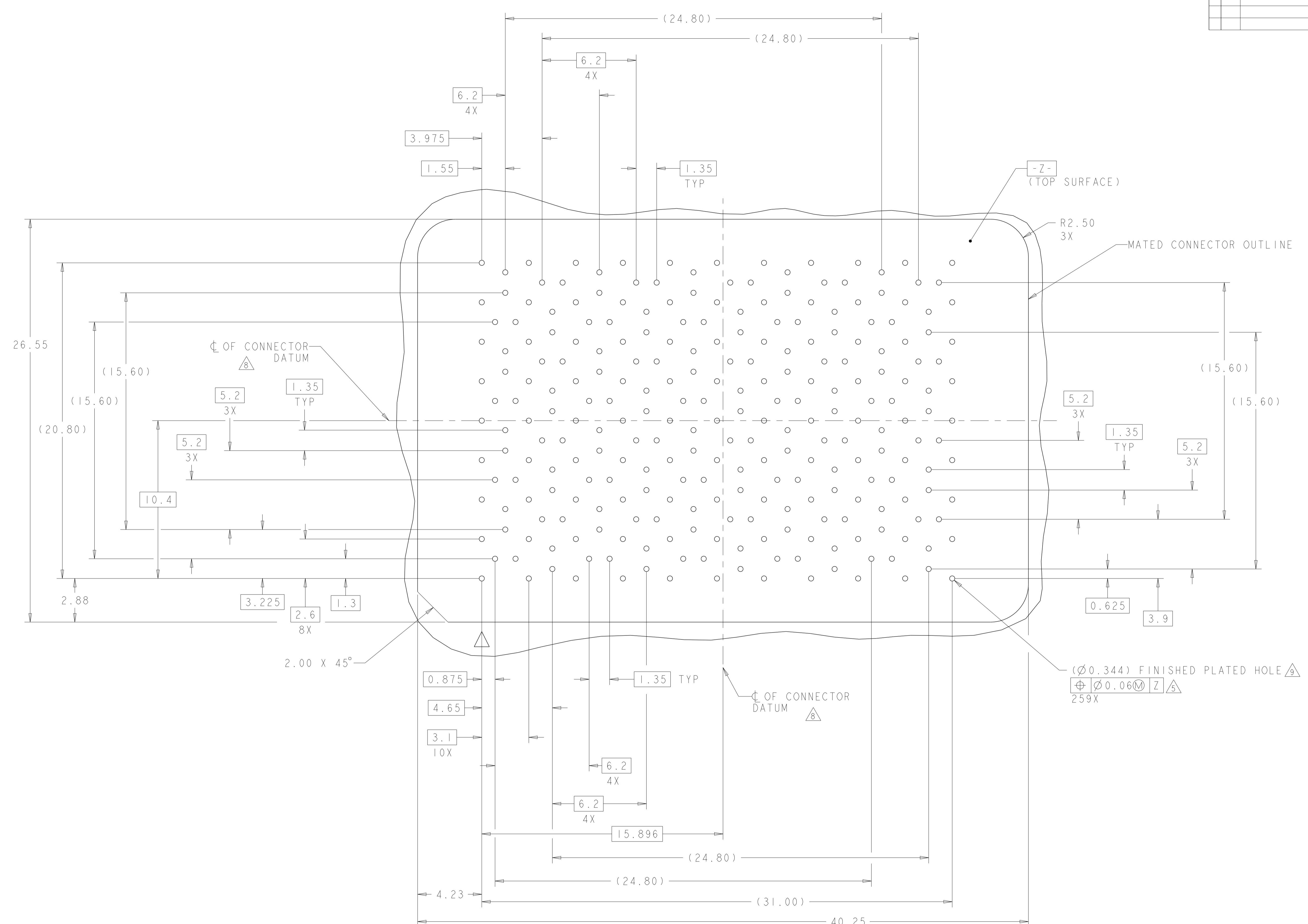
A1 CORNER INDICATORS.

MATED CONNECTOR OUTLINE SEE SHEET 3 FOR LOCATION TO HOLES

PCB LAYOUT AND PIN IDENTIFICATION 
 SHOWN FROM CONNECTOR SIDE
 SCALE 12:1

THIS DRAWING IS A CONTROLLED DOCUMENT.		DWN D. RINGLER 03SEP2008	 TE Connectivity
DIMENSIONS: mm		CHK D. TROUT 03SEP2008	
TOLERANCES UNLESS OTHERWISE SPECIFIED:		APVD J. FEEDER 03SEP2008	NAME RECEPTACLE ASSEMBLY
0 PLC ±	1 PLC ±	PRODUCT SPEC 108-2375	SIZE A100779
2 PLC ±0.13	3 PLC ±0.013	APPLICATION SPEC	CAGE CODE C=2057361
4 PLC ±	ANGLES ±1	FINISH	RESTRICTED TO
MATERIAL	WEIGHT	114-13249	SCALE 6:1 SHEET 2 OF 3 REV A
Customer Drawing			

LOC		DIST		REVISIONS			
GP	00	P	LTN	DESCRIPTION	DATE	DWN	APVD
-	-	-	-	SEE SHEET 1	-	-	-



PCB HOLE PATTERN
 SHOWN FROM CONNECTOR SIDE
 SCALE 8:1

THIS DRAWING IS A CONTROLLED DOCUMENT.		DWN D. RINGLER 03SEP2008	TE Connectivity
DIMENSIONS:		CHK D. TROUT 03SEP2008	
mm	TOLERANCES UNLESS OTHERWISE SPECIFIED:	APVD J. FEDDER 03SEP2008	NAME RECEPTACLE ASSEMBLY
	0 PLC ± 2 PLC ±0.13 3 PLC ±0.013 4 PLC ± ANGLES ±1	PRODUCT SPEC 108-2375	SIZE STRADA MESA MEZZANINE CONNECTOR
MATERIAL	FINISH	APPLICATION SPEC 114-13249	RESTRICTED TO
		WEIGHT	A100779C=2057361
		Customer Drawing	SCALE 6:1 SHEET 3 OF 3 REV A

X-ON Electronics

Largest Supplier of Electrical and Electronic Components

Click to view similar products for [High Speed/Modular Connectors](#) category:

Click to view products by [TE Connectivity](#) manufacturer:

Other Similar products are found below :

[650827-1](#) [74040-1346](#) [1410191-1](#) [1410368-3](#) [1410964-2](#) [1410326-3](#) [1410367-3](#) [1410971-4](#) [1467833-1](#) [2000877-1](#) [2000878-1](#) [2041314-1](#)
[2065387-1](#) [2187307-1](#) [163P](#) [1934290-1](#) [2000875-1](#) [2065917-1](#) [2102736-2](#) [FSR-40](#) [2169868-2](#) [22354-8](#) [437-5040-000](#) [5-1393565-0](#) [039-](#)
[0246-000](#) [0740618502](#) [0761601016](#) [0784461022](#) [10123159-12ELF](#) [030-2415-003/100 PK](#) [030-7380-004](#) [030-2494-001](#) [532939-1](#) [5532901-](#)
[3](#) [3-1469268-7](#) [74748-102LF](#) [10041743-101LF](#) [10066670-100002LF](#) [1-533915-1](#) [249-4515-000](#) [7-1469373-3](#) [DL2-2J/S](#) [2000713-8](#)
[2000713-7](#) [10124313-101LF](#) [3011-21](#) [757105208](#) [430305-001](#) [4395800100](#) [8140115](#)