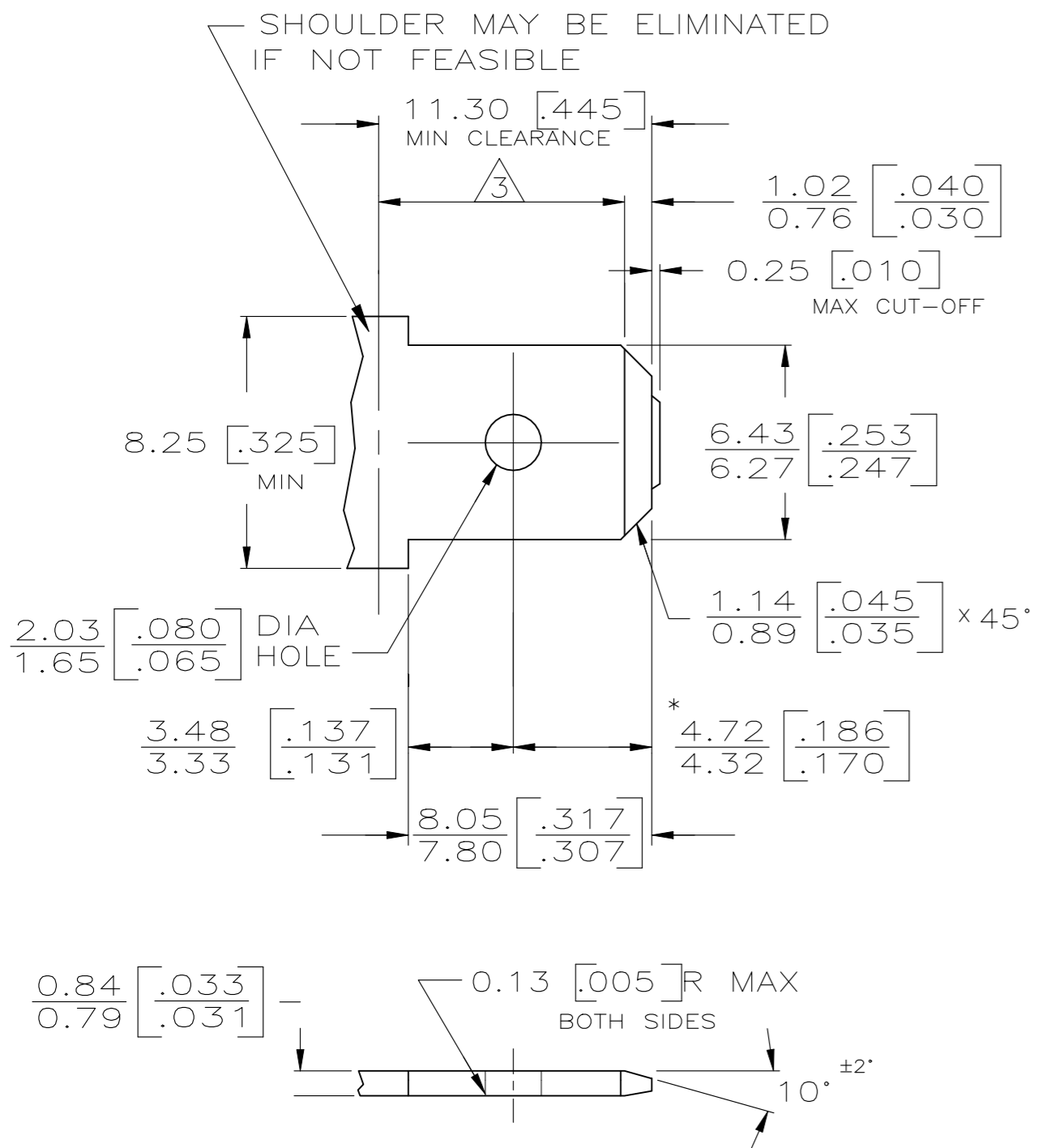


THIS DRAWING IS UNPUBLISHED. RELEASED FOR PUBLICATION
 © COPYRIGHT - By - ALL RIGHTS RESERVED.

LOC	DIST	REVISIONS					
		P	LTR	DESCRIPTION	DATE	DWN	APVD
G	01	S		REVISED PER ECR-20-100918	15FEB2020	PC	AF
		S1		REVISED PER ECR-21-109740	18AUG2021	BDA	AF

SUGGESTED MATING TAB



1 - MATL: 1/2H BRASS OR NICKEL PL STEEL.

2 - NO BURRS PERMISSIBLE AT HOLE.

3 - MUST BE FLAT WITHIN 0.076 [.003] OVER THIS LENGTH.

4 - TIN PLATING IS REQUIRED ON BRASS WHEN TERMINAL TEMP. IS OVER 225°F

5 - HOLE MUST BE SYMMETRICAL ABOUT TAB Q WITHIN 0.076 [.003]
 * TO BE USED ONLY WHEN SHOULDER IS ELIMINATED.

1 FOR USE WITH MKII POSITIVE LOCK, LOW INSERTION FORCE FASTON RECEPTACLES AND MOST BUDGET FASTON RECEPTACLES.

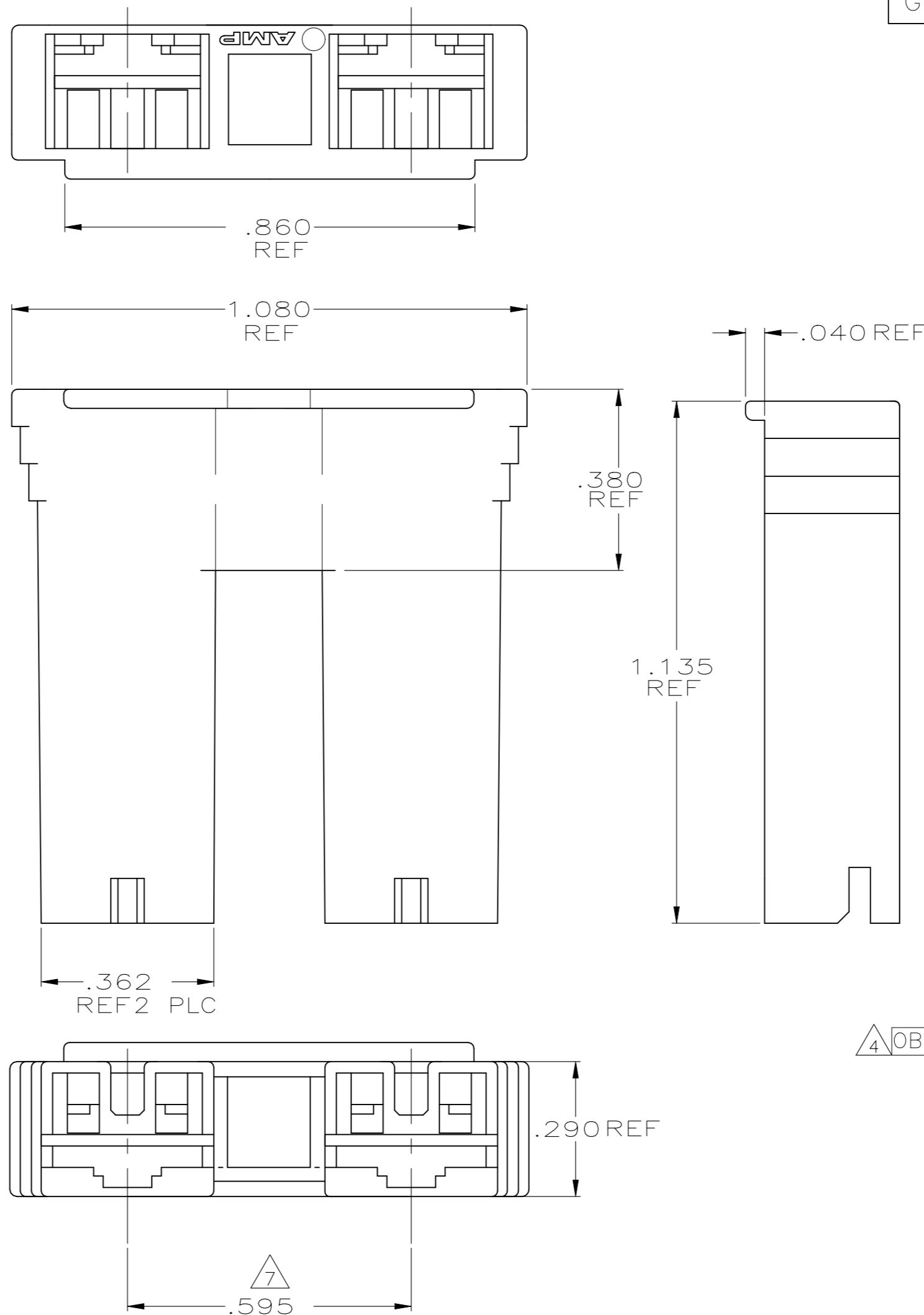
2 PRELIMINARY - NOT FOR PRODUCTION

3 PREPRODUCTION - FASR REQUIRED

4 OBSOLETE PARTS: OBSOLETE CIS STREAMLINING PER D.RENAUD/D.SINISI

5 HOUSING IS MOLDED FROM A MATERIAL THAT MEETS MINIMUM GLOW WIRE FLAMMABILITY INDEX OF 850°C PER IEC 60695-2-12 AND MINIMUM GLOW WIRE IGNITION TEMPERATURE OF 775°C PER IEC 60695-2-13.

6 HOUSING TESTED TO IEC 60695-2-11 FOR NYLON, GLOW-WIRE FLAMMABILITY TEST METHOD FOR END-PRODUCTS (GWEPT) 750°C.



7 DIMENSION IS BETWEEN CENTERLINES OF INSIDE CORE WIDTHS.

66 NYLON, 130°C V0 BLUE	4-520935-3
66 NYLON, 130°C V0 RED	4-520935-2
66 NYLON, 130°C V0 NATURAL	4-520935-1
NYLON, 130°C V0 GREEN	1-520935-4
6 NYLON V0, NATURAL	2-520935-4
66 NYLON V0, NATURAL	2-520935-3
6 NYLON V2 RED	2-520935-2
6 NYLON V2 NATURAL	2-520935-1
V0 GREEN	1-520935-9
NYLON, 130°C, V0 BLACK	1-520935-8
NYLON, 130°C, V0 BROWN/TAN	1-520935-7
NYLON, 130°C, V0 YELLOW	1-520935-6
NYLON, 130°C, V0 BLUE	1-520935-5
NYLON, 130°C, V0 RED	1-520935-2
NYLON, 130°C, V0 NATURAL	1-520935-1
66 NYLON, 120°C V0 WEATHER RESIST BLACK	520935-9
BLACK	520935-8
BROWN	520935-7
YELLOW	520935-6
BLUE	520935-5
GREEN	520935-4
WEATHER RESIST BLACK	520935-3
RED	520935-2
NATURAL	520935-1
COLOR	PART NO

THIS DRAWING IS A CONTROLLED DOCUMENT.		DWN	JR RUTH	4/14/88	 TE Connectivity				
DIMENSIONS: INCHES		CHK	M FEHER	4/14/88					
TOLERANCES UNLESS OTHERWISE SPECIFIED:		APVD	R KUZO	4/14/88					
0 PLC ± - 1 PLC ± - 2 PLC ± - 3 PLC ± .010 4 PLC ± - ANGLES ± -		NAME		HOUSING, RECPT, POSITIVE-LOCK & STANDARD FASTON, .250 SERIES, MKII					
MATERIAL	6/6 NYLON	FINISH	SEE TABLE	WEIGHT	SIZE	CAGE CODE	DRAWING NO	RESTRICTED TO	
					A2	00779	C=520935	-	
CUSTOMER DRAWING				SCALE	4:1	SHEET	1 OF 1	REV	S1

X-ON Electronics

Largest Supplier of Electrical and Electronic Components

Click to view similar products for [Terminals](#) category:

Click to view products by [TE Connectivity](#) manufacturer:

Other Similar products are found below :

[00-054007-01074-6](#) [00-054007-70206-1](#) [00-054007-70210-8](#) [00-054007-70217-7](#) [00-054007-70226-9](#) [00-054007-70228-3](#) [00-054007-70248-1](#) [00-054007-70256-6](#) [00-054007-70301-3](#) [00-054007-70316-7](#) [00-054007-49560-4](#) [00-054007-70209-2](#) [00-054007-70225-2](#) [00-054007-70227-6](#) [00-054007-70231-3](#) [00-054007-70241-2](#) [00-054007-70242-9](#) [00-054007-70244-3](#) [00-054007-70246-7](#) [00-054007-70263-4](#) [00-054007-70288-7](#) [00-054007-70290-0](#) [00-054007-70300-6](#) [00-054007-70304-4](#) [01-2065-1-0216](#) [01-2900-1-04412](#) [00581P0075](#) [600TS-10](#) [60205-1](#) [604200-1](#) [605601-1](#) [60598-1-CUT-TAPE](#) [61314-6-C](#) [61810-3](#) [61-S](#) [61-SN](#) [626-0194](#) [62-NBM-A](#) [62-SN](#) [62-SP](#) [63-S](#) [640179-1](#) [M55155/059I03](#) [M55155/079C01](#) [M55155/099H02](#) [M55155/109H01](#) [M55155/109H02](#) [M55155/12XH05](#) [M55155/16XH02](#) [M55155/29-5S](#)