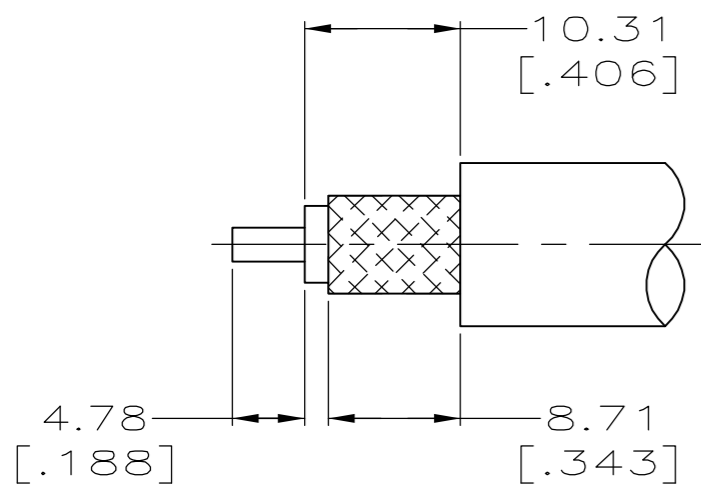


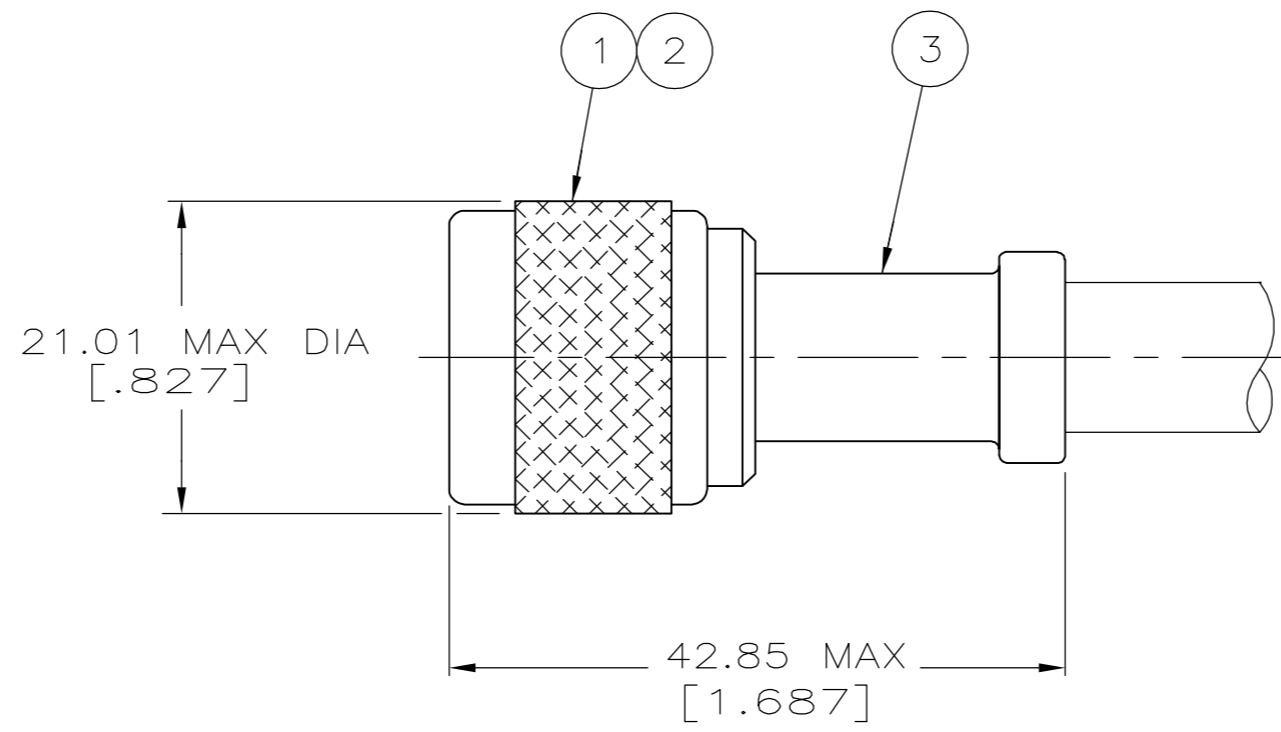
THIS DRAWING IS UNPUBLISHED. RELEASED FOR PUBLICATION
 © COPYRIGHT BY TYCO ELECTRONICS CORPORATION. ALL RIGHTS RESERVED.

LOC	DIST	REVISIONS			
P	LTR	DESCRIPTION	DATE	DWN	APVD
AJ	16	B	REVISED PER ECO-06-010757	18MAY2006	KS JH

- 1. CRIMP TOOL: 220045-2
- 2. SEE I.S. 408-2028-1



RECOMMENDED STRIP LENGTH



RG-58A/U & 58C/U (BSX 7002-58C/U)	5225392-7 AMP	9-225560-3	225343-2	9-225412-1	5225392-7
RG-142/U,142A/U & 142B/U	5225392-2 AMP	9-225560-4	225343-4	9-225412-0	5225392-2
RG-55/U & 223/U	5225392-1 AMP	9-225560-4	225343-2	9-225412-0	5225392-1
CABLE SIZE	STAMPING	③ FERRULE QTY=1	② CONTACT QTY=1	① PLUG ASSY QTY=1	PART NUMBER

THIS DRAWING IS A CONTROLLED DOCUMENT.		DWN J. ALCORTA - 22APR2005	tyco Electronics		Tyco Electronics Corporation Harrisburg, PA 17105-3608	
DIMENSIONS: mm [INCHES]		CHK J. HAVENER 22APR2005	NAME PLUG, WEATHERPROOF, SERIES N		RESTRICTED TO	
TOLERANCES UNLESS OTHERWISE SPECIFIED:		APVD G. MICHAEL 22APR2005	PRODUCT SPEC 108-12019		SCALE 2:1	
0 PLC ± -		APPLICATION SPEC		SHEET 1 of 1		
1 PLC ± -		WEIGHT 1.2 OZ MAX		REV B		
2 PLC ± 0.41 [.016]		CUSTOMER DRAWING		SCALE 2:1		
3 PLC ± -		MATERIAL -		SHEET 1 of 1		
4 PLC ± -		FINISH -		REV B		
ANGLES ± -		SIZE A2		CAGE CODE 00779		
FINISH -		DRAWING NO C=5225392		REV B		

5225392

X-ON Electronics

Largest Supplier of Electrical and Electronic Components

Click to view similar products for [RF Connectors / Coaxial Connectors](#) category:

Click to view products by [TE Connectivity](#) manufacturer:

Other Similar products are found below :

[8915-1511-000](#) [89674-0827](#) [6001-7071-019](#) [6002-7051-003](#) [6002-7551-202](#) [6059674-1](#) [619550-1](#) [630059-000](#) [M39030/3-01N](#) [6500-7071-046](#) [6769](#) [CX050L2AQ](#) [7002-1541-010](#) [7002-1542-011](#) [7004-1512-000](#) [7009-1511-004](#) [7010-1511-000](#) [7029-1511-060](#) [7101-1541-010](#) [7101-1571-002](#) [7105-1521-002](#) [7145-1521-002](#) [7203-1571-003](#) [7209-1511-011](#) [7210-1511-015](#) [7210-1511-019](#) [73137-5015](#) [73216-2241](#) [73404-2300](#) [7405-1521-005](#) [7405-1521-802](#) [8527](#) [8547](#) [FS11V](#) [877931](#) [9049-9513-000](#) [9074-9513-000](#) [9101-9573-002](#) [910A205F](#) [9130-9573-002](#) [PL11SC-026](#) [PL375-33](#) [PL40-5](#) [PL74C-221](#) [PL75MC-217](#) [PL803-7](#) [1200690078](#) [1-201144-1](#) [R107003010W](#) [R110A172100](#)