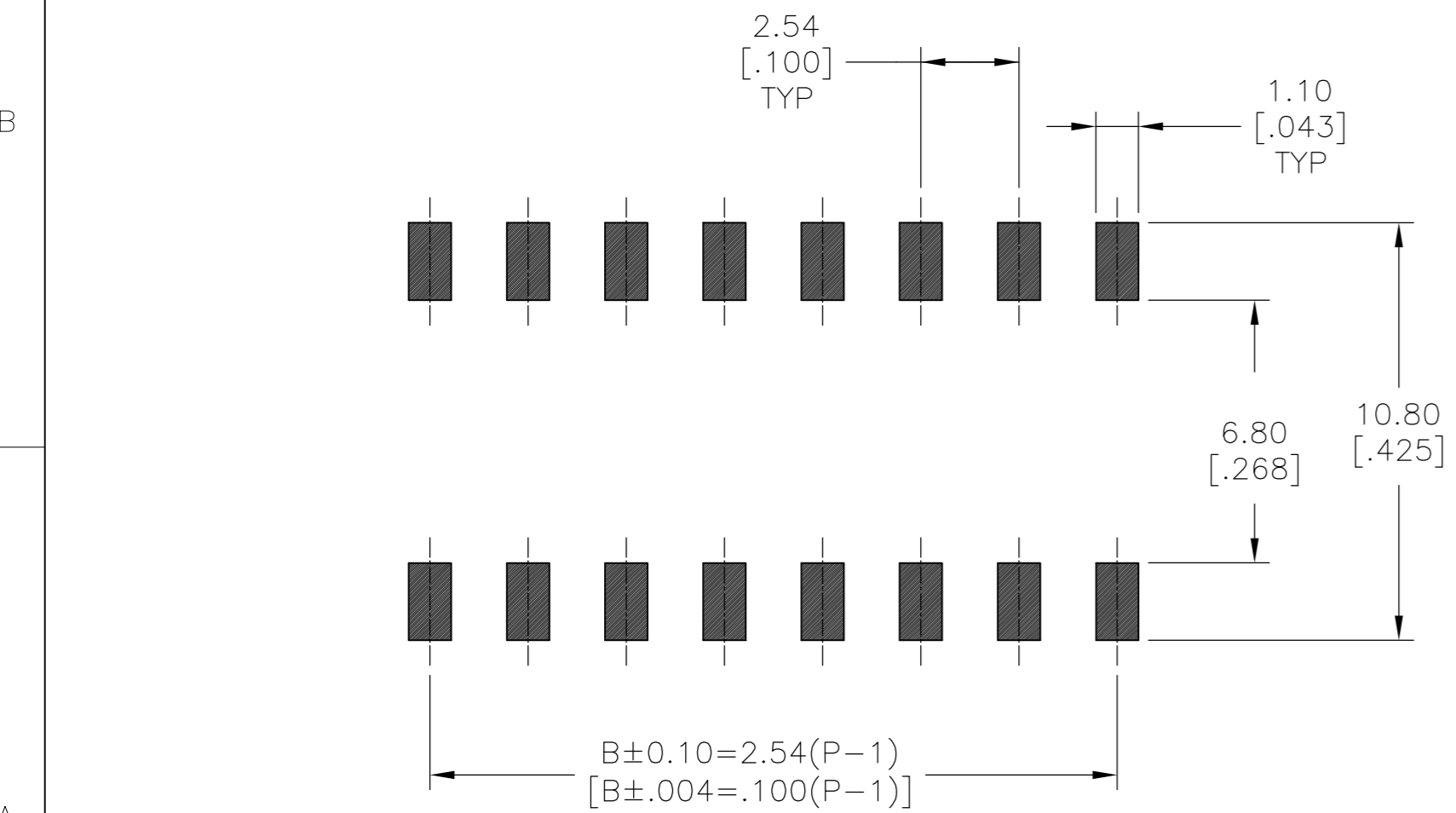
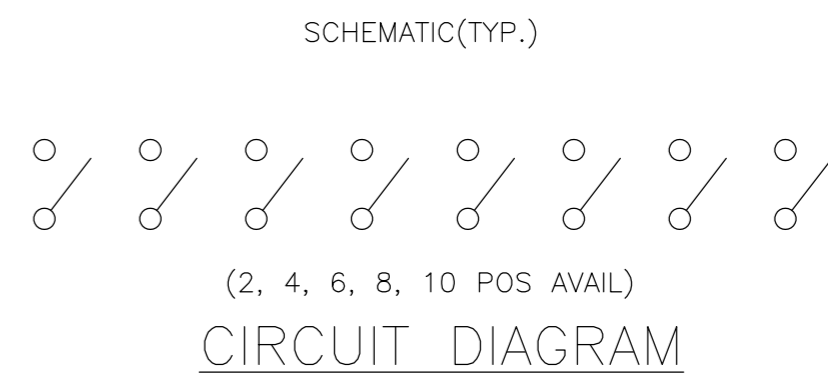
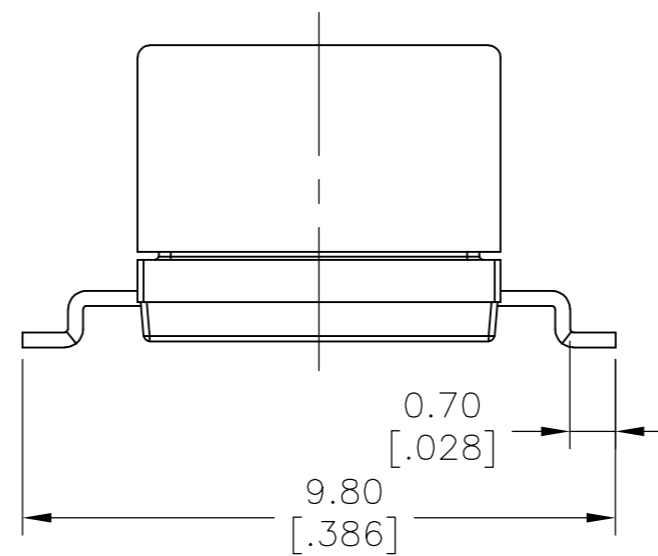
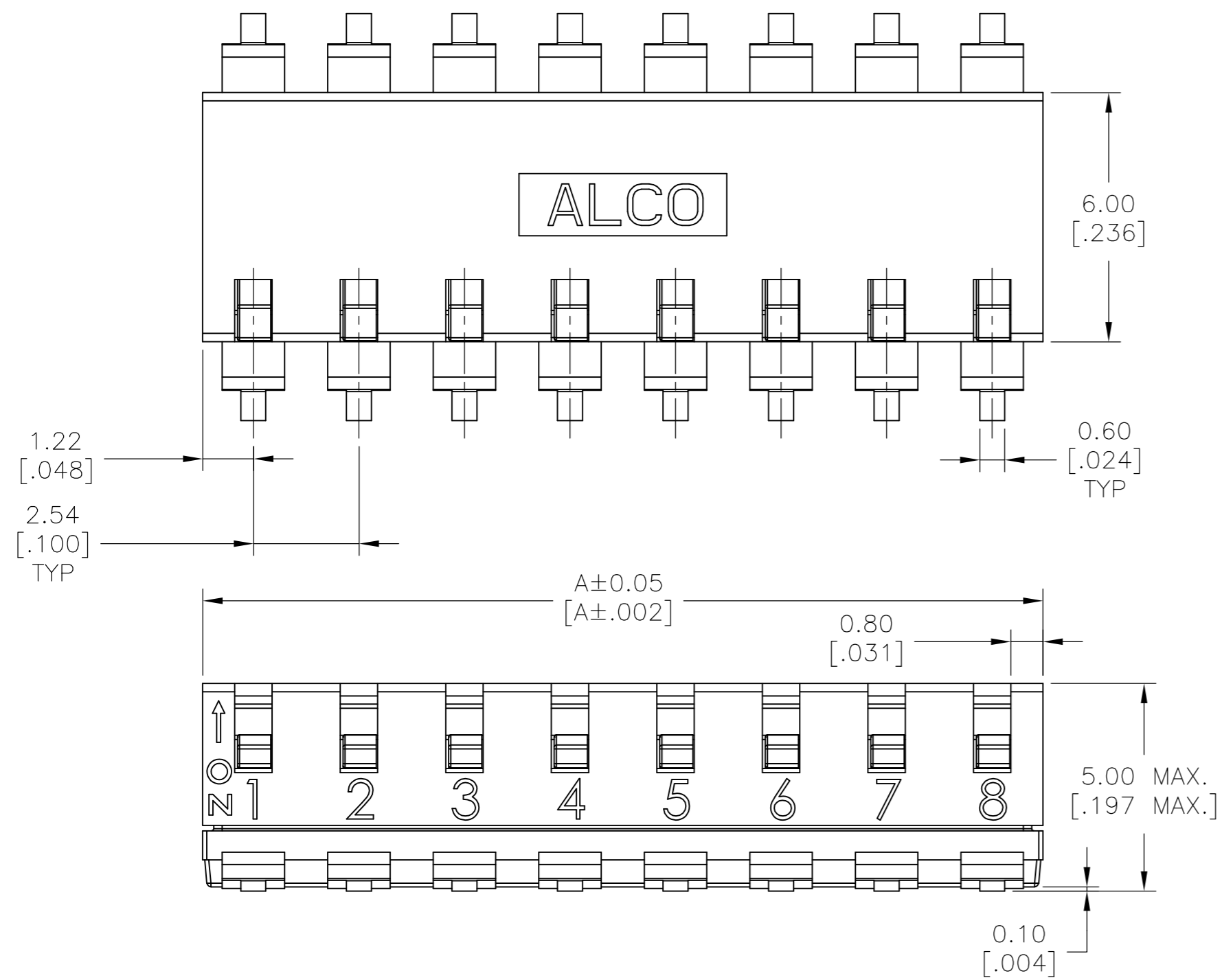
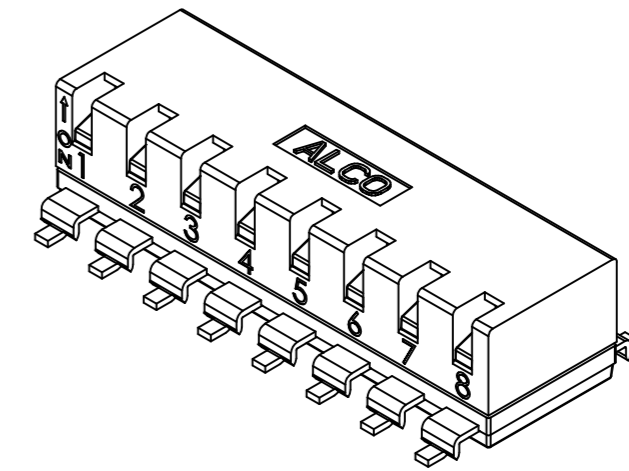


THIS DRAWING IS UNPUBLISHED. RELEASED FOR PUBLICATION
 © COPYRIGHT - TE Connectivity ALL RIGHTS RESERVED.

REVISIONS					
P	LTR	DESCRIPTION	DATE	DWN	APVD
-	-	SEE SHEET 1	-	-	-

SHORT ACTUATOR
 PUSH UP ON



P.C.B. LAYOUT

THIS DRAWING IS A CONTROLLED DOCUMENT.		DWN 12MAY2017 SHIVAKUMAR S S		
DIMENSIONS: mm[INCHES]		CHK 12MAY2017 ALEXANDER SHARPE		
TOLERANCES UNLESS OTHERWISE SPECIFIED:		APVD 12MAY2017 ALEXANDER SHARPE	NAME PIANO DIP SWITCH END STACKABLE	
0 PLC ± -		PRODUCT SPEC	-	
1 PLC ± -		APPLICATION SPEC	-	
2 PLC ± 0.20[.008]		WEIGHT	-	
3 PLC ± -		MATERIAL	-	
4 PLC ± -		FINISH	-	
ANGLES ± -		CUSTOMER DRAWING	-	
MATERIAL		SCALE 1:1	SHEET 2 OF 4	REV A

THIS DRAWING IS UNPUBLISHED. RELEASED FOR PUBLICATION
 © COPYRIGHT - TE Connectivity ALL RIGHTS RESERVED.

REVISIONS					
P	LTR	DESCRIPTION	DATE	DWN	APVD
-	-	SEE SHEET 1	-	-	-

YES	DOWN ON	7.62 [.300]	10.06 [.396]	04	EDSP04SGRNSTR04	5-2319764-2
		2.54 [.100]	4.98 [.196]	02	EDSP02SGRNSTR04	5-2319764-1
		22.86 [.900]	25.30 [.996]	10	EDSP10SGRFNTR04	5-2319764-0
		17.78 [.700]	20.22 [.796]	08	EDSP08SGRFNTR04	4-2319764-9
		12.70 [.500]	15.14 [.596]	06	EDSP06SGRFNTR04	4-2319764-8
		7.62 [.300]	10.06 [.396]	04	EDSP04SGRFNTR04	4-2319764-7
		2.54 [.100]	4.98 [.196]	02	EDSP02SGRFNTR04	4-2319764-6
		22.86 [.900]	25.30 [.996]	10	EDSP10SGLFNTR04	4-2319764-5
		17.78 [.700]	20.22 [.796]	08	EDSP08SGLFNTR04	4-2319764-4
		12.70 [.500]	15.14 [.596]	06	EDSP06SGLFNTR04	4-2319764-3
		7.62 [.300]	10.06 [.396]	04	EDSP04SGLFNTR04	4-2319764-2
		2.54 [.100]	4.98 [.196]	02	EDSP02SGLFNTR04	4-2319764-1
		22.86 [.900]	25.30 [.996]	10	EDSP10SGRNNTRO4	4-2319764-0
		17.78 [.700]	20.22 [.796]	08	EDSP08SGRNNTRO4	3-2319764-9
		12.70 [.500]	15.14 [.596]	06	EDSP06SGRNNTRO4	3-2319764-8
		7.62 [.300]	10.06 [.396]	04	EDSP04SGRNNTRO4	3-2319764-7
		2.54 [.100]	4.98 [.196]	02	EDSP02SGRNNTRO4	3-2319764-6
		22.86 [.900]	25.30 [.996]	10	EDSP10SGLNNTRO4	3-2319764-5
		17.78 [.700]	20.22 [.796]	08	EDSP08SGLNNTRO4	3-2319764-4
		12.70 [.500]	15.14 [.596]	06	EDSP06SGLNNTRO4	3-2319764-3
		7.62 [.300]	10.06 [.396]	04	EDSP04SGLNNTRO4	3-2319764-2
		2.54 [.100]	4.98 [.196]	02	EDSP02SGLNNTRO4	3-2319764-1
		22.86 [.900]	25.30 [.996]	10	EDSP10SGRFSTU04	3-2319764-0
		17.78 [.700]	20.22 [.796]	08	EDSP08SGRFSTU04	2-2319764-9
		12.70 [.500]	15.14 [.596]	06	EDSP06SGRFSTU04	2-2319764-8
		7.62 [.300]	10.06 [.396]	04	EDSP04SGRFSTU04	2-2319764-7

YES	DOWN ON	2.54 [.100]	4.98 [.196]	02	EDSP02SGRFSTU04	2-2319764-6
		22.86 [.900]	25.30 [.996]	10	EDSP10SGRNSTU04	2-2319764-5
		17.78 [.700]	20.22 [.796]	08	EDSP08SGRNSTU04	2-2319764-4
		12.70 [.500]	15.14 [.596]	06	EDSP06SGRNSTU04	2-2319764-3
		7.62 [.300]	10.06 [.396]	04	EDSP04SGRNSTU04	2-2319764-2
		2.54 [.100]	4.98 [.196]	02	EDSP02SGRNSTU04	2-2319764-1
		22.86 [.900]	25.30 [.996]	10	EDSP10SGRFNTU04	2-2319764-0
		17.78 [.700]	20.22 [.796]	08	EDSP08SGRFNTU04	1-2319764-9
		12.70 [.500]	15.14 [.596]	06	EDSP06SGRFNTU04	1-2319764-8
		7.62 [.300]	10.06 [.396]	04	EDSP04SGRFNTU04	1-2319764-7
		2.54 [.100]	4.98 [.196]	02	EDSP02SGRFNTU04	1-2319764-6
		22.86 [.900]	25.30 [.996]	10	EDSP10SGLFNTU04	1-2319764-5
		17.78 [.700]	20.22 [.796]	08	EDSP08SGLFNTU04	1-2319764-4
		12.70 [.500]	15.14 [.596]	06	EDSP06SGLFNTU04	1-2319764-3
		7.62 [.300]	10.06 [.396]	04	EDSP04SGLFNTU04	1-2319764-2
		2.54 [.100]	4.98 [.196]	02	EDSP02SGLFNTU04	1-2319764-1
		22.86 [.900]	25.30 [.996]	10	EDSP10SGRNNTU04	1-2319764-0
		17.78 [.700]	20.22 [.796]	08	EDSP08SGRNNTU04	2319764-9
		12.70 [.500]	15.14 [.596]	06	EDSP06SGRNNTU04	2319764-8
		7.62 [.300]	10.06 [.396]	04	EDSP04SGRNNTU04	2319764-7
		2.54 [.100]	4.98 [.196]	02	EDSP02SGRNNTU04	2319764-6
		22.86 [.900]	25.30 [.996]	10	EDSP10SGLNNTU04	2319764-5
		17.78 [.700]	20.22 [.796]	08	EDSP08SGLNNTU04	2319764-4
		12.70 [.500]	15.14 [.596]	06	EDSP06SGLNNTU04	2319764-3
		7.62 [.300]	10.06 [.396]	04	EDSP04SGLNNTU04	2319764-2
		2.54 [.100]	4.98 [.196]	02	EDSP02SGLNNTU04	2319764-1

DIMENSIONS: mm[INCHES] 		TOLERANCES UNLESS OTHERWISE SPECIFIED: 0 PLC ± - 1 PLC ± - 2 PLC ± 0.20[.008] 3 PLC ± - 4 PLC ± - ANGLES ± -		MATERIAL: - FINISH: -		THIS DRAWING IS A CONTROLLED DOCUMENT. DWN SHIVAKUMAR S S 12MAY2017 CHK ALEXANDER SHARPE 12MAY2017 APVD ALEXANDER SHARPE 12MAY2017 PRODUCT SPEC APPLICATION SPEC		 TE Connectivity NAME: PIANO DIP SWITCH END STACKABLE SIZE: A2 CAGE CODE: 00779 DRAWING NO: C-2319764 RESTRICTED TO: -	
CUSTOMER DRAWING				SCALE: 1:1 SHEET: 3 OF 4 REV: A					

THIS DRAWING IS UNPUBLISHED. RELEASED FOR PUBLICATION
 © COPYRIGHT - TE Connectivity ALL RIGHTS RESERVED.

REVISIONS					
P	LTR	DESCRIPTION	DATE	DWN	APVD
-	-	SEE SHEET 1	-	-	-

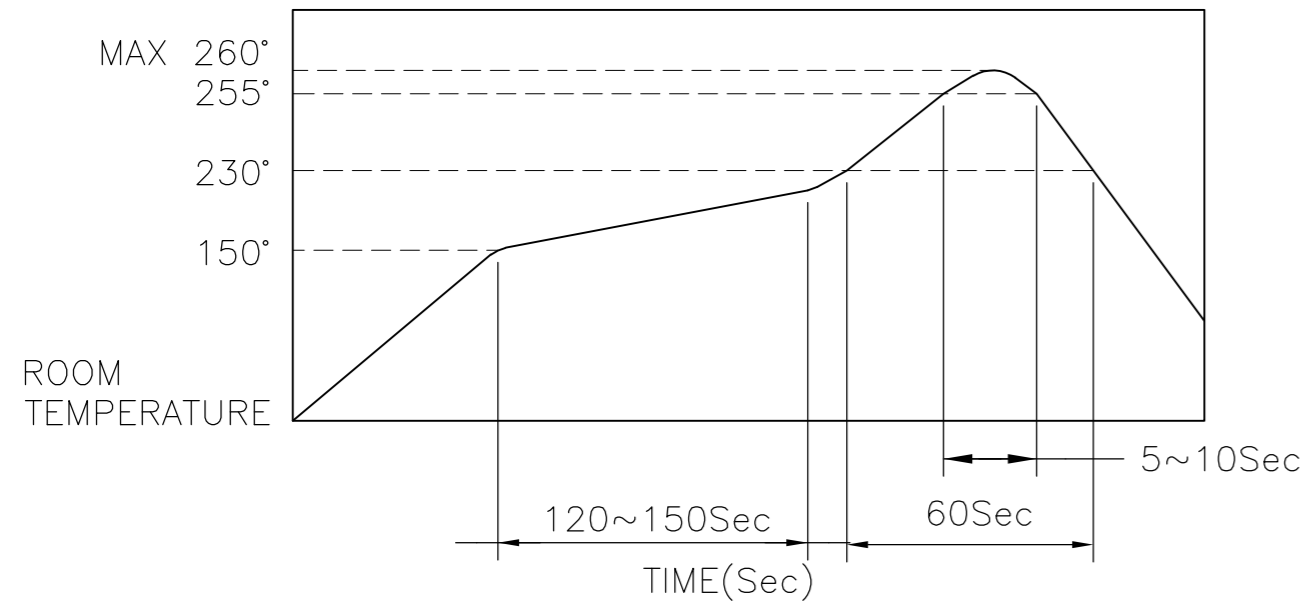
SOLDERING CONDITIONS:

THE CONDITIONS MENTIONED BELOW IS THE TEMPERATURE ON THE CU FOIL OF THE P.C.B SURFACE. DO NOT ALLOW THE SWITCH'S SURFACE TEMPERATURE TO EXCEED 260°C.

MANUAL SOLDERING

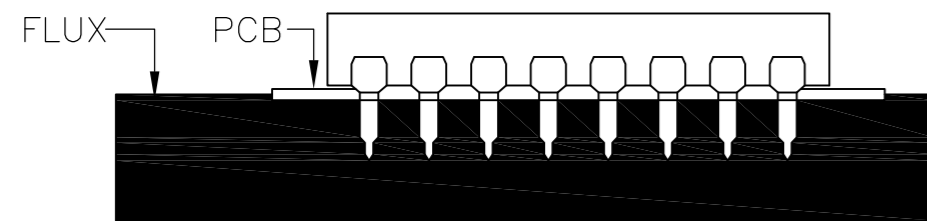
SOLDERING TEMPERATURE	MAX. 350°C.
CONTINUOUS SOLDERING TIME	MAX. 5 SECONDS.

REFLOW SOLDERING



HANDLING PRECAUTIONS

- CARE SHOULD BE EXERCISED SO THAT FLUX FROM THE UPPER PART OF THE PRINTED CIRCUIT BOARD DOES NOT ADHERE TO THE SWITCH.
- DON'T CLEAN THE SWITCH BODY EXCEPT WITH TOP TAPE SEALED TYPE, WHICH CAN ONLY SPRAY OF CLEANING METHOD FROM TOP OF S/W.
- ENSURE FLUX DOES NOT RISE ABOVE THE TOP SURFACE OF THE PCB.



SPECIFICATIONS:

MATERIALS:

BASE: PA (HIGH-TEMP. NYLON) UL94V-0
 COVER: PA (HIGH-TEMP. NYLON) UL94V-0
 ACTUATOR: LCP UL94V-0
 CONTACT: COPPER ALLOY, GOLD (in contact area)
 OVER NICKEL PLATE
 TERMINAL: BRASS ALLOY, GOLD PLATE
 TAPE: POLYAMIDE.

ELECTRICAL:

CONTACT RATING: NON-SWITCHING 100mA @ 50 VDC.
 SWITCHING: 25mA @ 24 VDC.
 INITIAL CONTACT RESISTANCE: 100mΩ MAX. @ 2 VDC. 10mA.
 INSULATION RESISTANCE: 100 MEGOHMS MIN. @ 500 VDC,
 1 MINUTE +/- 5 SECONDS.
 DIELECTRIC STRENGTH: 100 VAC (50 OR 60 HZ), 1 MINUTE.
 DURABILITY: 2,000 CYCLES.
 CAPACITANCE: 5 pF MAX @ 1 MHz +/- 10 KHz.

MECHANICAL:

OPERATING FORCE: 800gf MAX.

ENVIRONMENTAL:

OPERATING TEMPERATURE: -20°C TO +85°C.
 STORAGE TEMPERATURE: -40°C TO +85°C.
 SOLDER HEAT RESISTANCE PER 109-201, CONDITION B.
 SOLDERABILITY PER JIS C 0050 & JIS C 0053.

NOTES:

- ALL MATERIALS AND FINISHES SHALL COMPLY WITH EU DIRECTIVE 2002/95/EC OF 27 JAN 2003 (ROHS).



TUBE PACKAGING.



TAPE AND REEL PACKAGING.

TAPE	ACTUATOR TYPE	ACTUATION PUSH	NOTE	B	A	No OF POSITION	TE DESCRIPTIVE PART NUMBER	TE PART NUMBER
YES	SHORT	UP ON	3	22.86	25.30	10	EDSP10SGRFSTR04	6-2319764-0
				[.900]	[.996]			
				17.78	20.22	08	EDSP08SGRFSTR04	5-2319764-9
				[.700]	[.796]			
				12.70	15.14	06	EDSP06SGRFSTR04	5-2319764-8
				[.500]	[.596]			
		7.62		10.06	04	EDSP04SGRFSTR04	5-2319764-7	
		[.300]		[.396]				
		2.54		4.98	02	EDSP02SGRFSTR04	5-2319764-6	
		[.100]		[.196]				
		22.86		25.30	10	EDSP10SGRNSTR04	5-2319764-5	
		[.900]		[.996]				
17.78	20.22	08	EDSP08SGRNSTR04	5-2319764-4				
[.700]	[.796]							
12.70	15.14	06	EDSP06SGRNSTR04	5-2319764-3				
[.500]	[.596]							

THIS DRAWING IS A CONTROLLED DOCUMENT.		DWN 12MAY2017 SHIVAKUMAR S S	TE Connectivity PIANO DIP SWITCH END STACKABLE	
DIMENSIONS: mm[INCHES]		CHK 12MAY2017 ALEXANDER SHARPE		
TOLERANCES UNLESS OTHERWISE SPECIFIED:		APVD 12MAY2017 ALEXANDER SHARPE	NAME	
0 PLC ± -		PRODUCT SPEC	-	
1 PLC ± -		APPLICATION SPEC	-	
2 PLC ± 0.20[.008]		WEIGHT	SIZE	CAGE CODE
3 PLC ± -		FINISH	A2	00779
4 PLC ± -			SCALE	DRAWING NO
ANGLES ± -			1:1	C=2319764
MATERIAL			SHEET	RESTRICTED TO
-			4 OF 4	-
		CUSTOMER DRAWING	REV	A

2319764

X-ON Electronics

Largest Supplier of Electrical and Electronic Components

Click to view similar products for [TE Connectivity](#) manufacturer:

Other Similar products are found below :

[D38999/24FJ4AN](#) [570416-000](#) [CLTEQ-M81CE-SSRELAY-4-20V](#) [4-1195131-0](#) [650069-000](#) [SMD100-2](#) [358838-000](#) [CB-1022B-78](#)
[RM707012](#) [RP410012](#) [MMS42](#) [1-640426-8](#) [2EDL4CM](#) [DTS20W19-11PD-3028-LC](#) [RM202615](#) [NC6-P104-06](#) [MSPS103B](#) [DTS26F21-41HE-LC](#) [DTS26F21-41AE](#) [DTS26F21-41PE-LC](#) [DTS26F21-11SE-3028-LC](#) [30DCB6](#) [1932144-1](#) [293545-4](#) [LVR125S](#) [MS27466T25F4PB](#)
[CKB-38-78010](#) [TR04AI-TINELLOCKRING](#) [1206SFF150F/63-2](#) [D38999/20JB35HA](#) [TE1500A2R2J](#) [D38999/20WC8BB](#) [DTS24F19-11SC-3028-LC](#) [D38999/24WG11HA](#) [D38999/24WG11HN](#) [MS27467T21F11H](#) [DJT16E21-11HA](#) [MS27467T21F35J](#) [MS27467T21F11J](#)
[MS27467T21F16H-LC](#) [MS27467T21F35H](#) [MS27467T21F41H-LC](#) [1206SFH150F/24-2](#) [RP330024](#) [DJT16E21-11PA-LC](#) [DJT16E21-11HA-LC](#) [DJT16E21-11AA](#) [MS27467T21B11JA](#) [DJT16E21-11JA](#) [MS27467T21B11JA-LC](#)