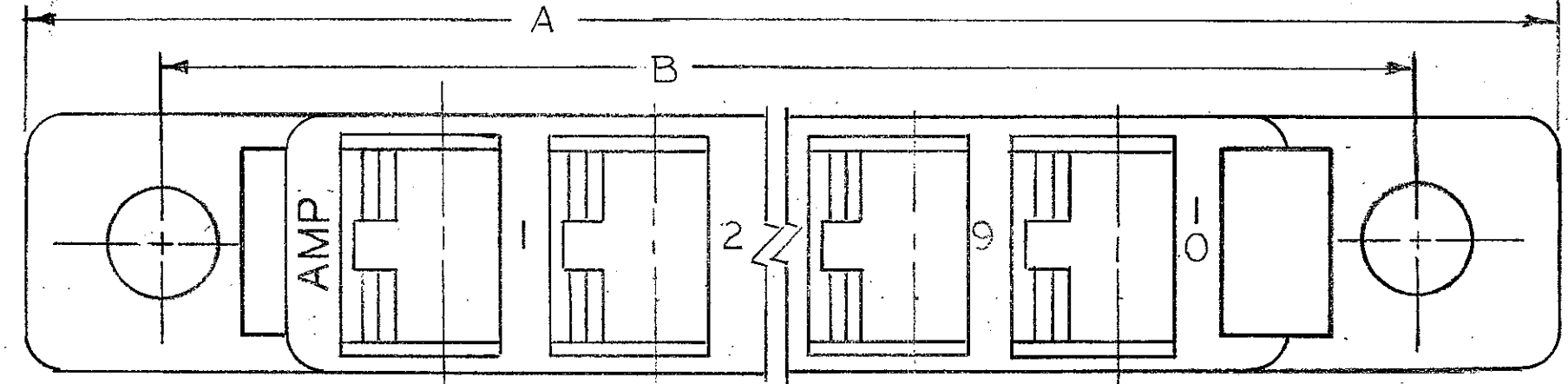
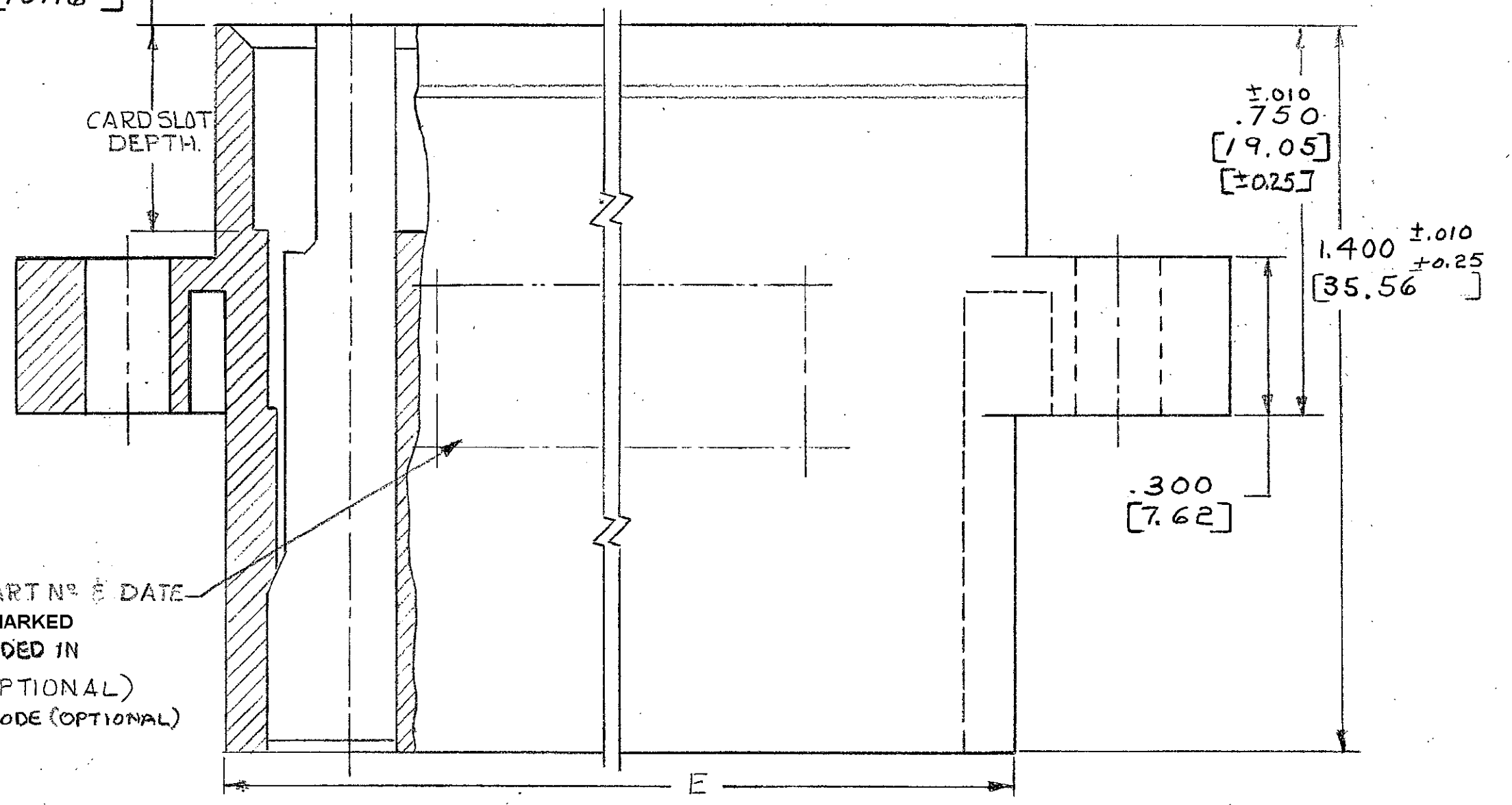
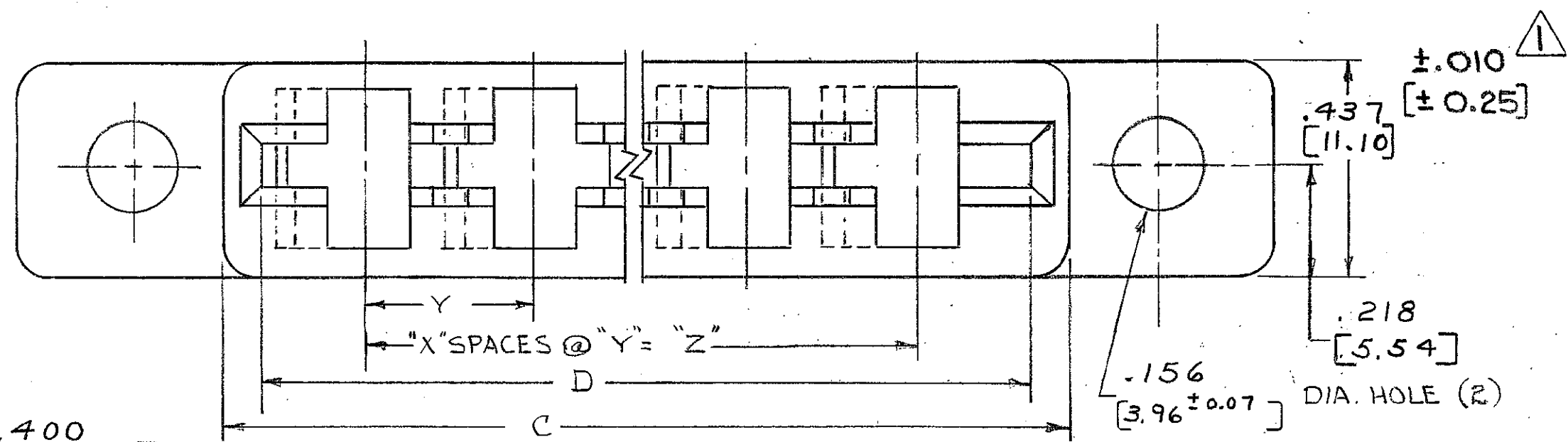


© COPYRIGHT 1975 BY AMP INCORPORATED, HARRISBURG, PA. ALL INTERNATIONAL RIGHTS RESERVED. AMP INCORPORATED PRODUCTS COVERED BY U. S. AND FOREIGN PATENTS AND/OR PATENTS PENDING.

REVISIONS						
P	F	ZONE	LTR	DESCRIPTION	DATE	APPROVED
✓			A	REVISED <i>m.s. 4570</i>	10-75	DR
✓			B	REVISED <i>AS 5336</i>	5-78	M.S.
✓			B1	REVISED <i>6098 m.s.</i>	6-79	
✓			C	REVISED PER ECN 8454 <i>ZPL</i>	5-83	
✓			D	REVISED PER ECN ADO188 <i>102</i>	5/11/89	R.f.
✓			D1	REV PER AD1111	2/18/86	
✓			D2	REVISED PER AD1276	4/18/86	CP
✓			E	085-8 PER ECN 0655-93	6-93	RAC
✓			F	REV. PER 0010-1154-95	11-95	PG.
			G	REV PER 0652-0070-99	4JUN99	MM
			H	REV PER EC 0G3C-233-01	08OCT01	MM
			H1	REVISED PER ECO-10-000445	09JAN10	AEG



UNLESS OTHERWISE SPECIFIED DIMENSIONS ARE IN M. M. TOLERANCES ON: DECIMALS \pm 0.127 ANGLES \pm [0.05]	CONTRACT NO	AMP INCORPORATED Harrisburg, Pa.	
	DR <i>Shuman 5-9-75</i>		
	MATERIAL GLASS FILLED POLYESTER COLOR- NATURAL (WHITE)	CHK <i>Shuman 5-9-75</i>	NAME HOUSING, HIGH-CURRENT CONNECTOR.
	FINISH ---	APPD <i>R. Shuman 5/14/75</i>	SIZE CODE IDENT NO DRAWING NO C 00779 530521
	OTHER APPD	SCALE 4:1	SHEET 1 OF 2


530521

© COPYRIGHT 1975 BY AMP INCORPORATED, HARRISBURG, PA.
 ALL INTERNATIONAL RIGHTS RESERVED. AMP INCORPORATED PRODUCTS
 COVERED BY U.S. AND FOREIGN PATENTS AND/OR PATENTS PENDING.

REVISIONS				
REV	ZONE	LTR	DESCRIPTION	DATE APPROVED
			SEE SHEET 1 of 2	

PART NO.	NO POS.	± 0.015	± 0.007	C	D	± 0.010	X	Y	Z	
		± 0.381	± 0.177			± 0.254				
		A	B			E				
530521-1	2	1.660	1.226	.852	.712	.802	1	.312	.312	INCH
		[42.16]	[31.14]	[21.64]	[8.08]	[20.37]		[7.92]	[7.42]	M M TYP. — OBSOLETE
530521-2	3	1.972	1.538	1.164	1.024	1.114	2		.624	OBSOLETE
		[50.09]	[39.06]	[29.56]	[26.00]	[28.29]			[15.84]	
530521-3	4	2.284	1.850	1.476	1.336	1.426	3		.936	
		[58.01]	[46.99]	[37.49]	[33.93]	[36.22]			[23.77]	
530521-4	5	2.596	2.162	1.788	1.648	1.738	4		1.248	OBSOLETE
		[65.94]	[54.91]	[45.41]	[41.85]	[44.14]			[31.69]	
530521-5	6	2.908	2.474	2.100	1.960	2.050	5		1.560	OBSOLETE Δ
		[73.86]	[62.54]	[53.34]	[49.74]	[52.07]			[39.62]	
530521-6	8	3.532	3.098	2.724	2.584	2.674	7		2.184	
		[89.71]	[78.69]	[69.18]	[65.63]	[67.92]			[55.47]	
530521-7	9	3.844	3.410	3.036	2.896	2.986	8		2.496	
		[97.63]	[86.61]	[77.11]	[73.55]	[75.84]			[63.39]	
530521-8	10	4.156	3.722	3.348	3.208	3.298	9		2.808	OBSOLETE
		[105.56]	[94.54]	[85.04]	[81.48]	[83.77]			[71.32]	
530521-9	12	4.780	4.346	3.972	3.832	3.922	11	.312	3.432	
		[121.41]	[110.39]	[100.89]	[97.33]	[99.62]		[7.92]	[87.17]	

- Δ 1 MEASURE ACROSS MOUNTING EARS. MAY GO TO .020 [0.51] OVER NOMINAL AT TOP OF HOUSING.
- 2. VOID CORING OPTIONAL.
- Δ 3 OBSOLETE PARTS: OBSOLETE CIS STREAMLINING PER D.RENAUD/D.SINISI

UNLESS OTHERWISE SPECIFIED DIMENSIONS ARE IN INCHES. TOLERANCES ON: DECIMALS \pm ANGLES \pm		CONTRACT NO	PART NO	
MATERIAL	DR <i>Drumke</i> 5-14-75 CHK <i>Drumke</i> 5-14-75	 AMP INCORPORATED Harrisburg, Pa.		
FINISH	APPD <i>R. Shorman</i> 5/14/75	NAME HOUSING, HIGH CURRENT CONNECTOR		
	DSGN APPD	SIZE	CODE IDENT NO	DRAWING NO.
	OTHER APPD	C	00779	530521
		SCALE	SHEET 2 OF 2	

X-ON Electronics

Largest Supplier of Electrical and Electronic Components

Click to view similar products for [Standard Card Edge Connectors](#) category:

Click to view products by [TE Connectivity](#) manufacturer:

Other Similar products are found below :

[CR7E-30DB-3.96E\(72\)](#) [6364499-1](#) [6565204-6](#) [PKC-156](#) [1437274-4](#) [147889-1](#) [1489165-4](#) [EBT15622B2X](#) [1-582587-1](#) [284-0102-12100](#)
[286-0052-12101A](#) [306022901000000](#) [307-012-502-202](#) [307-056-520-300](#) [2129318-1](#) [245-062-520-350](#) [287-0032-12101](#) [306-028-525-102](#)
[307-072-526-202](#) [345-060-559-303](#) [392-008-559-201](#) [534671-1](#) [341-240-317](#) [345-044-500-300](#) [346-240-318](#) [395-100-524-300](#) [09-07-2032](#)
[10035388-802LF](#) [10115859-011LF](#) [10122859-009LF](#) [10127905-B04B24BLF](#) [530555-1](#) [5-678046-1](#) [73726-0005](#) [66308-1](#) [1-1437275-6](#)
[PEC-07-02-T-S-A](#) [346-014-520-801](#) [307-048-502-202](#) [CE100F22-9-C](#) [CE100F26-7-C](#) [CE100F28-3-D](#) [CE156F18-9-C](#) [CE156F22-5-D](#)
[CE156F22-9-C](#) [CT100F22-2-D](#) [CT100F22-3-D](#) [CT100F24-2-D](#) [CT100F24-3-D](#) [CT100F24-6-C](#)