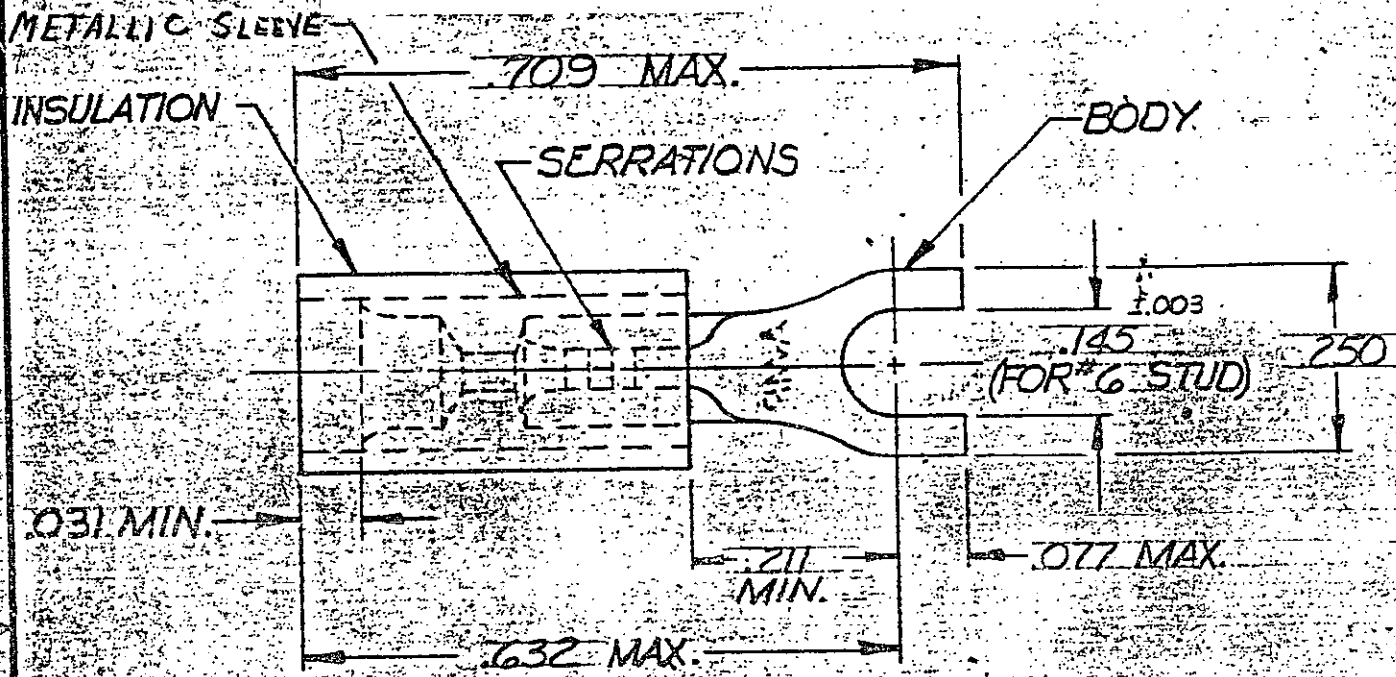


DRAWING MADE IN AMERICAN

© 1972 BY AMP INCORPORATED  
 RIGHTS RESERVED  
 COVERED BY  
 PATENT

USE WITHOUT  
 PERMISSION OF  
 AMP INCORPORATED

REV	DESCRIPTION	DATE	APPROV
0	NPS 72-0122	10/6/72	Same
A	.050-.105 WAS 050-082 PC-75.74 <small>REVISED TOOL NOTE</small>	10-9-75	ad
B	REL FOR P-8986	11-14-79	ad
C	INACTIVE -1 P-9381	1-30-82	ad
D	OBSOLETE -1 G-2340	1/6/87	adm
E	REV 10 G10-0094-98	2/1/99	ME



TONGUE MATERIAL THK. = .027  
 FOR .050 TO .095 WIRE INS. DIA.  
 MUST BE CRIMPED WITH 22-18 OR 22-16 PIDG. (RED) TO

53115-1 ON TAPE	53115-2	BODY: COPPER (ASTM B152) TIN PL. (ASTM B545)
<del>WIRE</del> <del>TERMINAL</del>	53115-1 OBSOLETE	SLEEVE: COPPER (ASTM B152) TIN PL. (ASTM B545)
QTY	DESCRIPTION	PART NO.
		MATERIAL & FINISH

UNLESS OTHERWISE SPECIFIED DIMENSIONS ARE IN INCHES  
 TOLERANCES ON:  
 DECIMALS ±.008  
 ANGLES ±5°

MATERIAL

SEE TABLE

CONTRACT NO.	11
DR.	Low Bail 6-6-72
CHK	Don Emmerich 6-7-72
APPD	Abel 6-15-72
REL	
DSGN APPD	
OTHER APPD	

**AMP** AMP INCORPORATED  
 HARRISBURG, PENNSYLVANIA

NAME: WIRE TERMINAL  
 PIDG-SPADE  
 WIRE SIZE: 26-24

SIZE	CODE IDENT NO.	NUMBER
A	00779	53115
SCALE N.T.S.	SHEET 1 OF 1	

## X-ON Electronics

Largest Supplier of Electrical and Electronic Components

*Click to view similar products for [Terminals](#) category:*

*Click to view products by [TE Connectivity](#) manufacturer:*

Other Similar products are found below :

[00-054007-01074-6](#) [00-054007-70206-1](#) [00-054007-70210-8](#) [00-054007-70217-7](#) [00-054007-70226-9](#) [00-054007-70228-3](#) [00-054007-70248-1](#) [00-054007-70256-6](#) [00-054007-70301-3](#) [00-054007-70316-7](#) [0-0320562-0](#) [00-054007-49560-4](#) [00-054007-70209-2](#) [00-054007-70225-2](#) [00-054007-70227-6](#) [00-054007-70231-3](#) [00-054007-70241-2](#) [00-054007-70242-9](#) [00-054007-70244-3](#) [00-054007-70246-7](#) [00-054007-70263-4](#) [00-054007-70288-7](#) [00-054007-70290-0](#) [00-054007-70300-6](#) [00-054007-70304-4](#) [01-2065-1-0216](#) [01-2900-1-04412](#) [00581P0075](#) [600TS-10](#) [60205-1](#) [604200-1](#) [605601-1](#) [60598-1-CUT-TAPE](#) [61314-6-C](#) [61810-3](#) [61-S](#) [61-SN](#) [626-0194](#) [62-NBM-A](#) [62-SN](#) [62-SP](#) [63-S](#) [640179-1](#) [M55155/059I03](#) [M55155/079C01](#) [M55155/099H02](#) [M55155/109H01](#) [M55155/109H02](#) [M55155/12XH05](#) [M55155/16XH02](#)