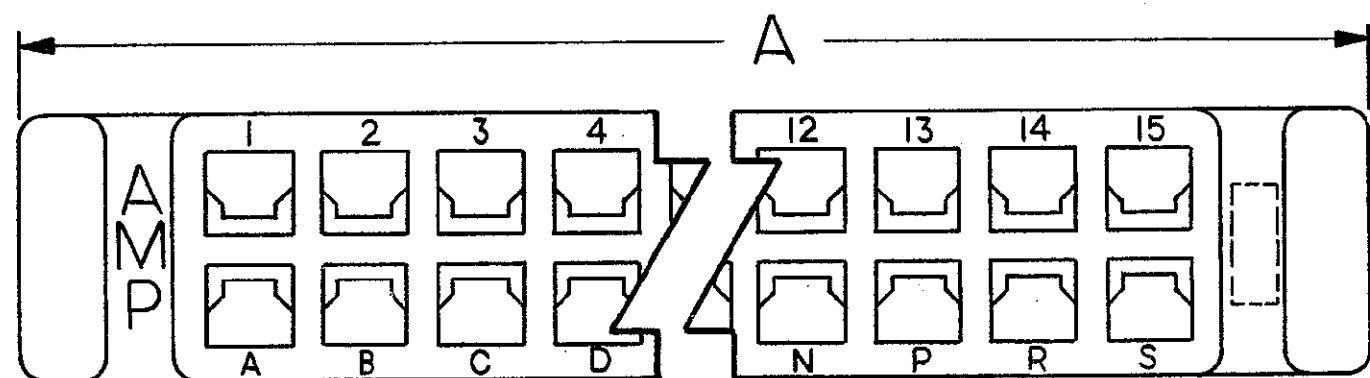
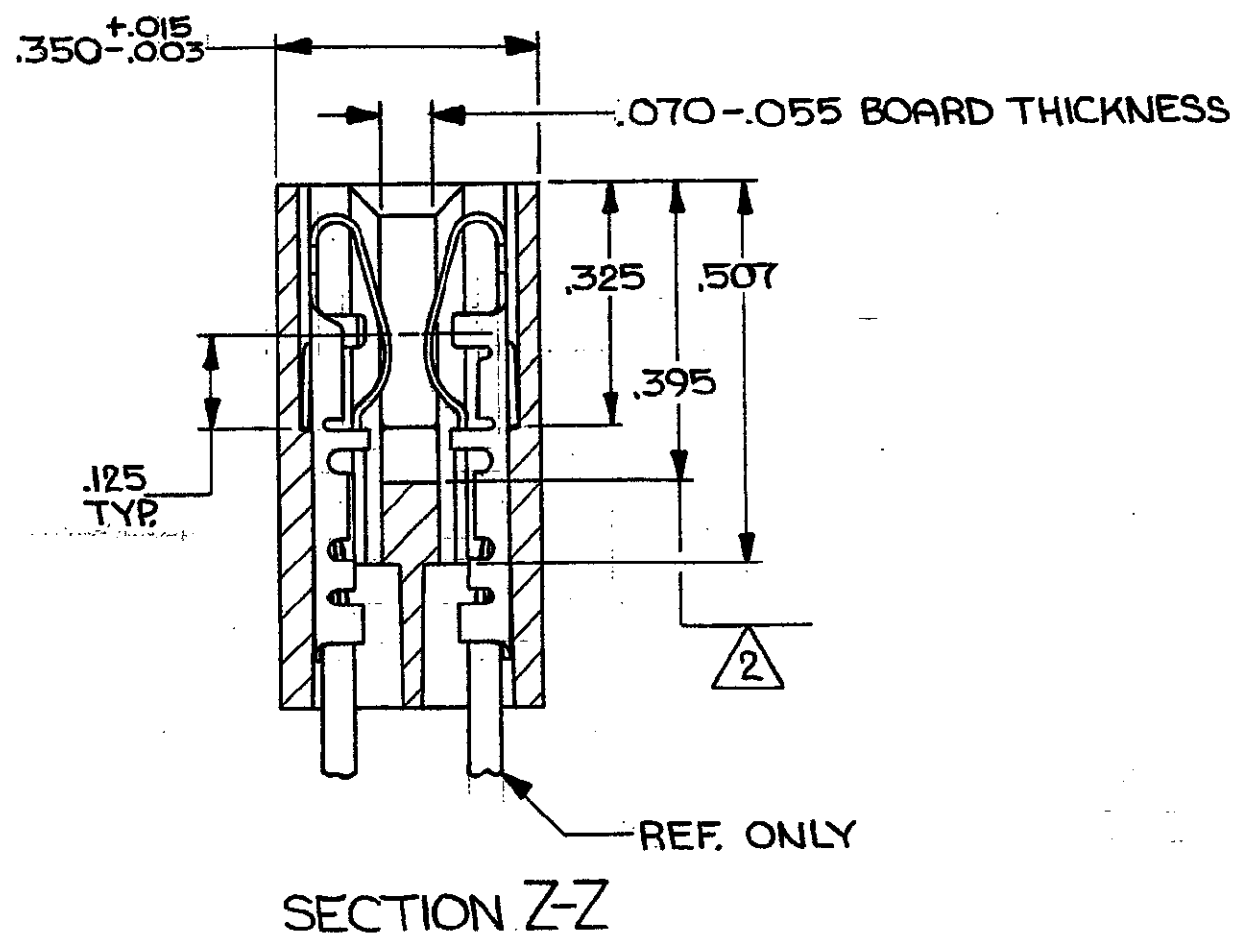
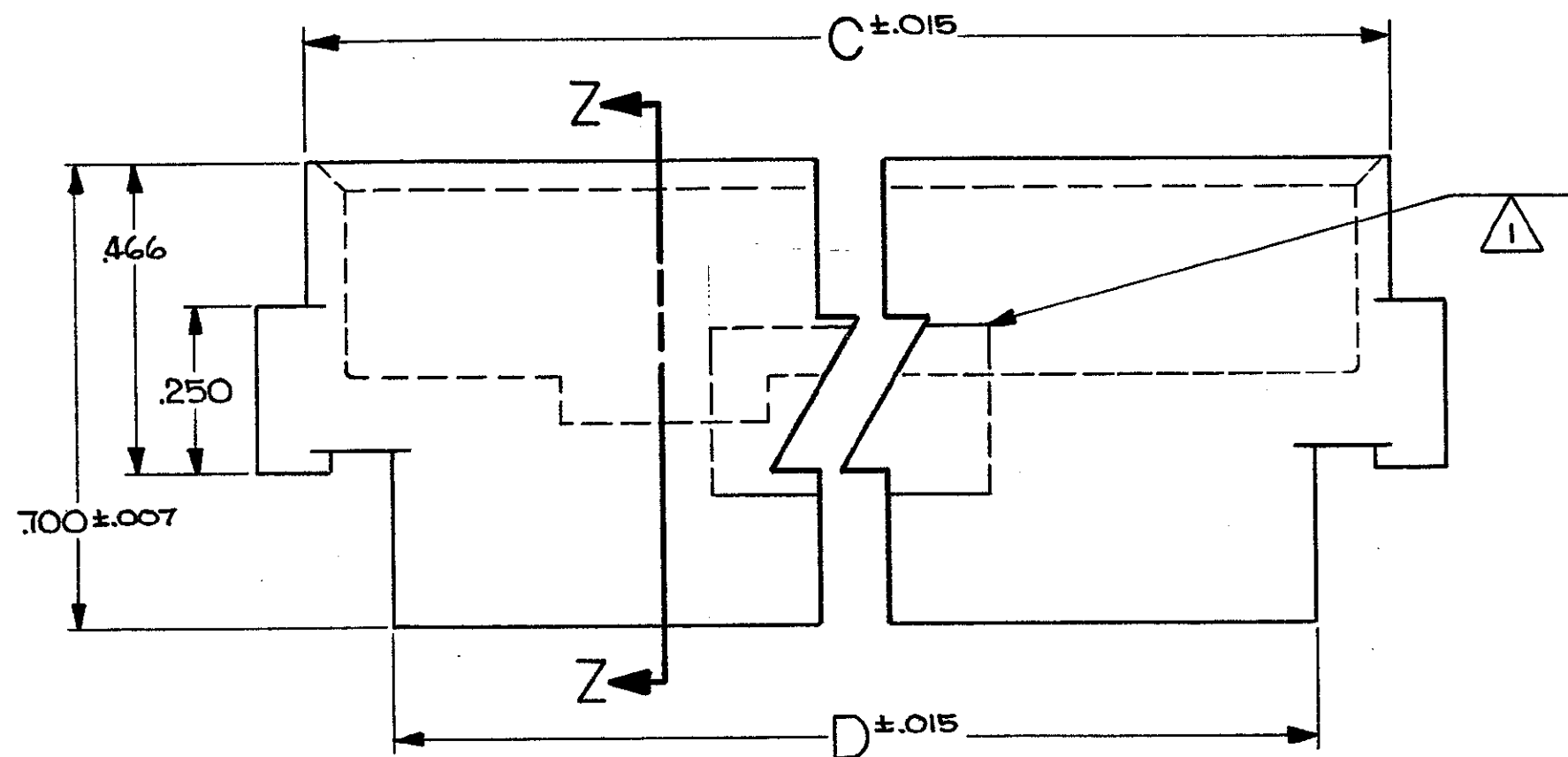
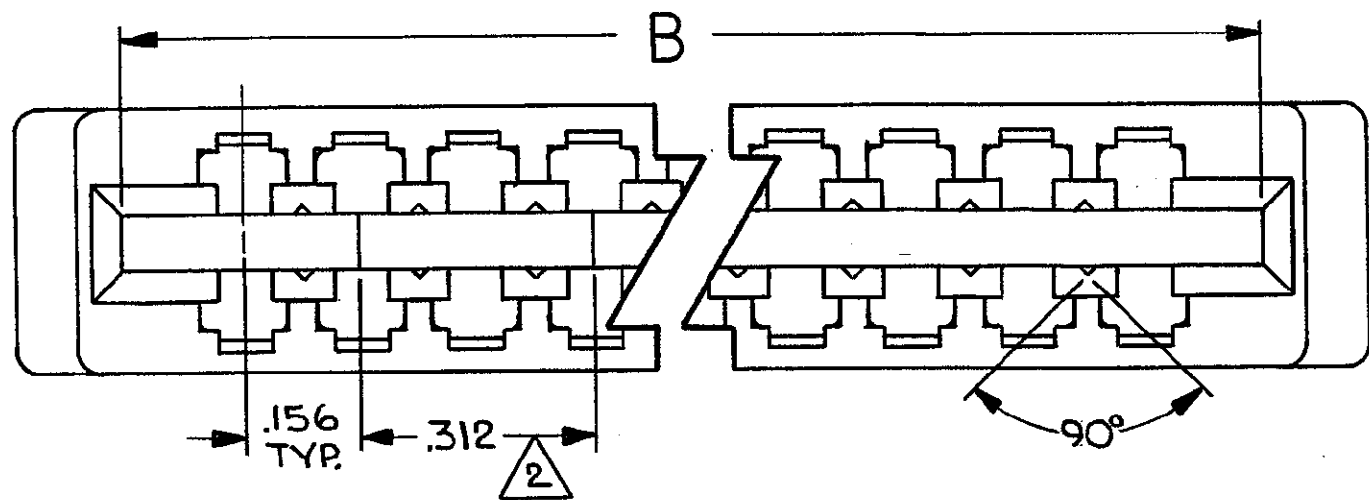


© COPYRIGHT 1980 BY AMP INCORPORATED, HARRISBURG, PA.  
 ALL INTERNATIONAL RIGHTS RESERVED. AMP INCORPORATED PRODUCTS  
 COVERED BY U. S. AND FOREIGN PATENTS AND/OR PATENTS PENDING.

REVISIONS						
P	F	ZONE	LTR	DESCRIPTION	DATE	APPROVED
			0	WAS 5112-426		
01			01	REVISED PER 7239	A.M.S. 3-9-81	
		A		REV PER EC 0320-344-97	25 NOV 97	NS



1 "AMP", PART NUMBER, & DATE CODE THIS AREA.  
 2 THIS AREA IS RECESSED .070 BELOW DEPTH OF CARD SLOT.

UNLESS OTHERWISE SPECIFIED DIMENSIONS ARE IN INCHES. TOLERANCES ON: DECIMALS ±.010 ANGLES ±	531271-2						2.376	2.621	2.506	2.782	15	531271-1
	AS MOLDED P/N						D	C	B	A	NO. OF POS.	PART NO
MATERIAL FIBERITE 4004 COLOR-BLACK	CONTRACT NO						AMP INCORPORATED Harrisburg, Pa.					
	DR A.M. SHARPE 9-9-80						NAME HOUSING, AMP LEAF, MODIFIED EAR AND CARD SLOT					
FINISH //	CHK M. Smith 9-10-80						SIZE CODE IDENT NO DRAWING NO					
	APPD S.E. Shyer 9-12-80						C	00779	531271			
DESIGN APPD						SCALE 4:1		SHEET 1 OF 1				
OTHER APPD						CUSTOMER DRAWING						

## X-ON Electronics

Largest Supplier of Electrical and Electronic Components

*Click to view similar products for [Standard Card Edge Connectors](#) category:*

*Click to view products by [TE Connectivity](#) manufacturer:*

Other Similar products are found below :

[CR7E-30DB-3.96E\(72\)](#) [6364499-1](#) [6565204-6](#) [PKC-156](#) [1437274-4](#) [147889-1](#) [1489165-4](#) [EBT15622B2X](#) [1-582587-1](#) [284-0102-12100](#)  
[286-0052-12101A](#) [306022901000000](#) [307-012-502-202](#) [307-056-520-300](#) [2129318-1](#) [245-062-520-350](#) [287-0032-12101](#) [306-028-525-102](#)  
[307-072-526-202](#) [345-060-559-303](#) [392-008-559-201](#) [534671-1](#) [341-240-317](#) [345-044-500-300](#) [346-240-318](#) [395-100-524-300](#) [09-07-2032](#)  
[10035388-802LF](#) [10115859-011LF](#) [10122859-009LF](#) [10127905-B04B24BLF](#) [530555-1](#) [5-678046-1](#) [73726-0005](#) [66308-1](#) [1-1437275-6](#)  
[PEC-07-02-T-S-A](#) [346-014-520-801](#) [307-048-502-202](#) [CE100F22-9-C](#) [CE100F26-7-C](#) [CE100F28-3-D](#) [CE156F18-9-C](#) [CE156F22-5-D](#)  
[CE156F22-9-C](#) [CT100F22-2-D](#) [CT100F22-3-D](#) [CT100F24-2-D](#) [CT100F24-3-D](#) [CT100F24-6-C](#)