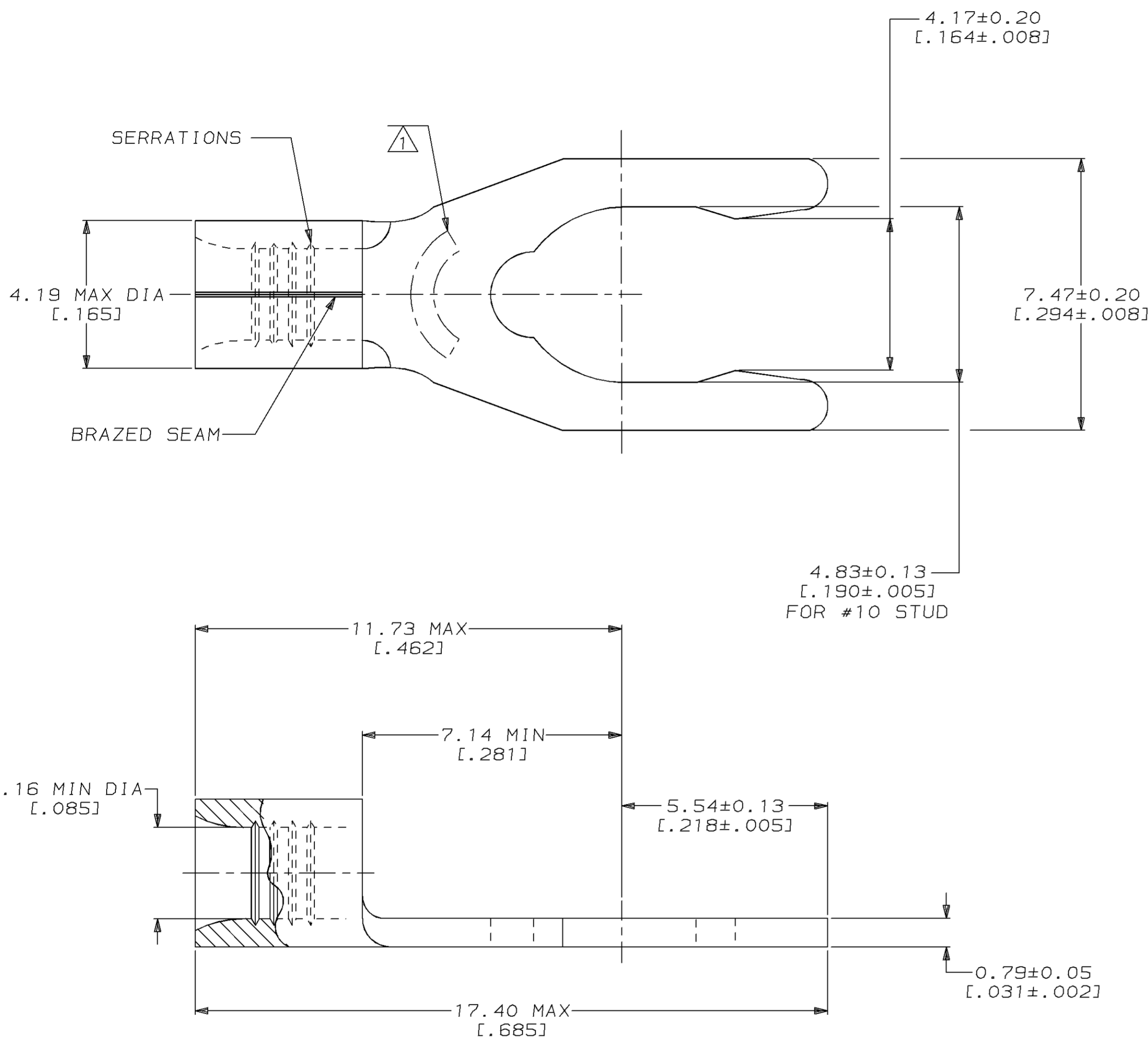


| LOC | DIST | P | F | ZONE | LTR | DESCRIPTION              | DATE    | APPD |
|-----|------|---|---|------|-----|--------------------------|---------|------|
| G   | 14   |   |   |      | D   | REVISED PER 0720-0958-96 | 05JUN96 | JMS  |

**METRIC**  
 DIMENSIONS LISTED IN mm [ INCHES ]

|                                |                                |
|--------------------------------|--------------------------------|
| <b>AMP</b><br>WIRE RANGE       | <b>UL</b> E13288<br>Listed     |
| 16-14 AWG<br>SOLID OR STRANDED | 16-14 AWG<br>SOLID OR STRANDED |
| <b>SR</b> LR7189<br>Certified  | MILITARY P/N<br>AND CLASS      |
| 16-14 AWG<br>SOLID OR STRANDED | NOT APPLICABLE                 |

⚠ STAMP 10S AMP 16-14\* APPROX AS SHOWN  
 10S INDICATES STUD SIZE



| QUANTITY | PACKAGING TYPE | PART NO |
|----------|----------------|---------|
| 5000     | ON TAPE        | 53834-2 |
| -----    | LOOSE PIECE    | 53834-1 |

|   |  |  |  |   |  |
|---|--|--|--|---|--|
| <b>AMP INCORPORATED</b><br>CUSTOMER SERVICE SYSTEMS                                       |  | MAX RECOMMENDED OPERATING TEMPERATURE:<br>170°C MAX  | DO NOT SCALE PRINT.<br>UNLESS SPECIFIED<br>DIMENSIONS IN mm [ INCHES ]<br>TOLERANCES ON :<br>2 PLC DEC ± -<br>3 PLC DEC ± -<br>ANGLES ± -  | DR 3-29-93<br>TA BRINKMAN<br>CHK 3-29-93<br>DA PATTERSON<br>APPD 3-29-93<br>DE MILLER<br>APPD 3-29-93<br>JL MECKLEY<br>PRODUCT SPEC -<br>APPLICATION SPEC -<br>WEIGHT - | <b>AMP</b> AMP Incorporated<br>Harrisburg, PA 17105-3608<br>NAME<br>TERMINAL, SHORT<br>SPRING SPADE, SOLISTRAND™ |
| FOR ADDITIONAL<br>PRODUCT INFORMATION OR<br>COPIES OF DRAWINGS<br>AND TECHNICAL DOCUMENTS | PRODUCT INFORMATION CENTER<br>1-800-522-6752 | VOLTAGE RATING:<br>NOT APPLICABLE  | MATERIAL<br>PHOSPHOR BRONZE<br>PER ASTM B-103<br>ANNEALED  | FINISH<br>TIN PLATE<br>0.00254 [ .000100 ] MIN<br>THK PER MIL-T-10727   | SIZE<br>C 00779<br>DRAWING NO<br>G=53834   |
| FOR APPLICATION<br>TOOLING INFORMATION  | TOOLING ASSISTANCE CENTER<br>1-800-722-1111  | WIRE CROSS SECTIONAL AREA RANGE:<br>1.04-2.62mm² [ 2,050-5,180 ] CIR MILS<br>SOLID OR STRANDED | THIS DRAWING IS A CONTROLLED DOCUMENT FOR<br>AMP INCORPORATED. IT IS SUBJECT TO CHANGE<br>AND THE CONTROLLING ENGINEERING ORGANIZATION<br>SHOULD BE CONTACTED FOR THE LATEST REVISION. |   |  |
| FOR ORDER ENTRY   | 1-800-526-5142                               |  |  |   | SCALE 10:1<br>SHEET 1 OF 1   |

## X-ON Electronics

Largest Supplier of Electrical and Electronic Components

*Click to view similar products for [Terminals](#) category:*

*Click to view products by [TE Connectivity](#) manufacturer:*

Other Similar products are found below :

[00-054007-01074-6](#) [00-054007-70206-1](#) [00-054007-70210-8](#) [00-054007-70217-7](#) [00-054007-70226-9](#) [00-054007-70228-3](#) [00-054007-70248-1](#) [00-054007-70256-6](#) [00-054007-70301-3](#) [00-054007-70316-7](#) [00-054007-49560-4](#) [00-054007-70209-2](#) [00-054007-70225-2](#) [00-054007-70227-6](#) [00-054007-70231-3](#) [00-054007-70241-2](#) [00-054007-70242-9](#) [00-054007-70244-3](#) [00-054007-70246-7](#) [00-054007-70263-4](#) [00-054007-70288-7](#) [00-054007-70290-0](#) [00-054007-70300-6](#) [00-054007-70304-4](#) [01-2065-1-0216](#) [01-2900-1-04412](#) [00581P0075](#) [600TS-10](#) [60205-1](#) [604200-1](#) [605601-1](#) [60598-1-CUT-TAPE](#) [61314-6-C](#) [61810-3](#) [61-S](#) [61-SN](#) [626-0194](#) [62-NBM-A](#) [62-SN](#) [62-SP](#) [63-S](#) [640179-1](#) [M55155/059I03](#) [M55155/079C01](#) [M55155/099H02](#) [M55155/109H01](#) [M55155/109H02](#) [M55155/12XH05](#) [M55155/16XH02](#) [M55155/29-5S](#)