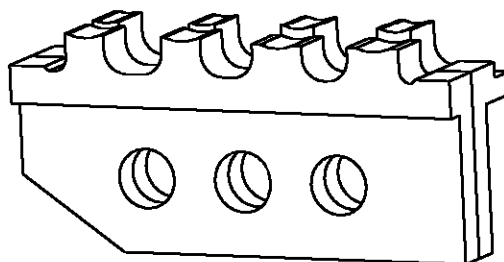
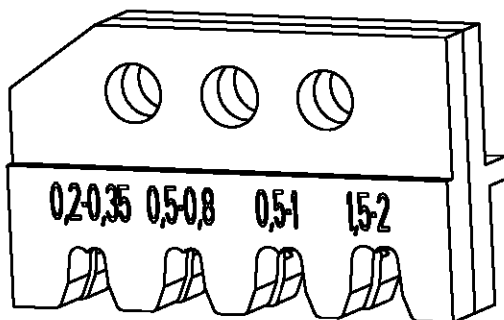


LOC	DIST	REVISIONS					
A1	-	P	LTR	DESCRIPTION	DATE	DWN	APVD

Kontakt Contact	DGB (mm ²) Wire Range	Drahtcrimp/Wirecrimp Hoehe/Height		Isocrimp Breite/Width	Iso.-Ø Ins. Range	Betriebsanl. Instr. Sheet
			Breite/Width			
926895 / 926896 / 926897	0.2-0.35	0.99	1.80	2.54	1.0-2.5	411-18209
	0.5-0.8	1.12				
926893 / 926894 / 926898	0.5-1.0	1.24	2.30	3.30	2.0-3.3	
	1.5-2.0	1.60				




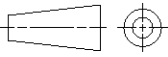
539746-2	1	1-539787-5	locator ass.	Positioniereinheit	A
	1	1-519151-3	screw M4x25	Schraube M4x25	A
	1	0-519151-9	screw M4x10	Schraube M4x10	A
	1	0-519024-2	hex nut M4	Mutter M4 DIN 985	A
	QTY Stck	PN	Description	Benennung	REV

19

RELEASED FOR PUBLICATION

THIS DRAWING IS UNPUBLISHED.

© COPYRIGHT 19 BY TYCO ELECTRONICS CORPORATION. ALL RIGHTS RESERVED.

DIMENSIONS: mm-DIN 7168-m	DWN	M. Weberndoerfer	28JUL00	MATERIAL	-	FINISH	-	
	CHK	J. Reuter	28JUL00	 tyco Electronics AMP GmbH D - 64625 Bensheim				
TOLERANCES UNLESS OTHERWISE SPECIFIED:			APVD					NAME
0 PLC ±	PRODUCT SPEC			ERGOCRIMP Die Set for				
1 PLC ±	-			Universal MATE-N-LOK				
2 PLC ±	APPLICATION SPEC			SIZE	CAGE CODE	DRAWING NO	RESTRICTED TO	
3 PLC ±	-			A4	00779	©=539746-2	-	
4 PLC ±	WEIGHT			CUSTOMER DRAWING				
ANGLES ±	-			SCALE	2:1	SHEET	1 OF 1	
			REV					A

X-ON Electronics

Largest Supplier of Electrical and Electronic Components

Click to view similar products for [Punches & Dies](#) category:

Click to view products by [TE Connectivity](#) manufacturer:

Other Similar products are found below :

[58510-1](#) [63454-1601](#) [63457-0056](#) [63457-3401](#) [730-5/8](#) [730BB-1-3/8](#) [PV-670508-001](#) [1328](#) [1338](#) [13782656](#) [13782673](#) [13782686](#) [AR-19](#)
[AR-24](#) [1528-TL](#) [1583609-1](#) [1720](#) [1762951-1](#) [2063500-2](#) [19031-0168](#) [AR-20](#) [AR-23](#) [313336-3](#) [11-19-3122](#) [539663-1](#) [63446-2241](#) [TL-18](#)
[0634451912](#) [1762674-1](#) [63454-0123](#) [68240-1](#) [68247-1](#) [734252](#) [313183-1](#) [PA2029](#) [119174-001](#) [23846-1](#) [11-40-5342](#) [68010-2](#) [690370015](#)
[730BB-1-1/8](#) [730BB-1-1/16](#) [19032-0048](#) [63465-0023](#) [11-40-4438](#) [63457-0041](#) [2906252-01](#) [19032-0202](#) [11-11-0054](#) [11-11-0052](#)