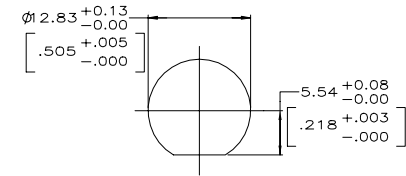
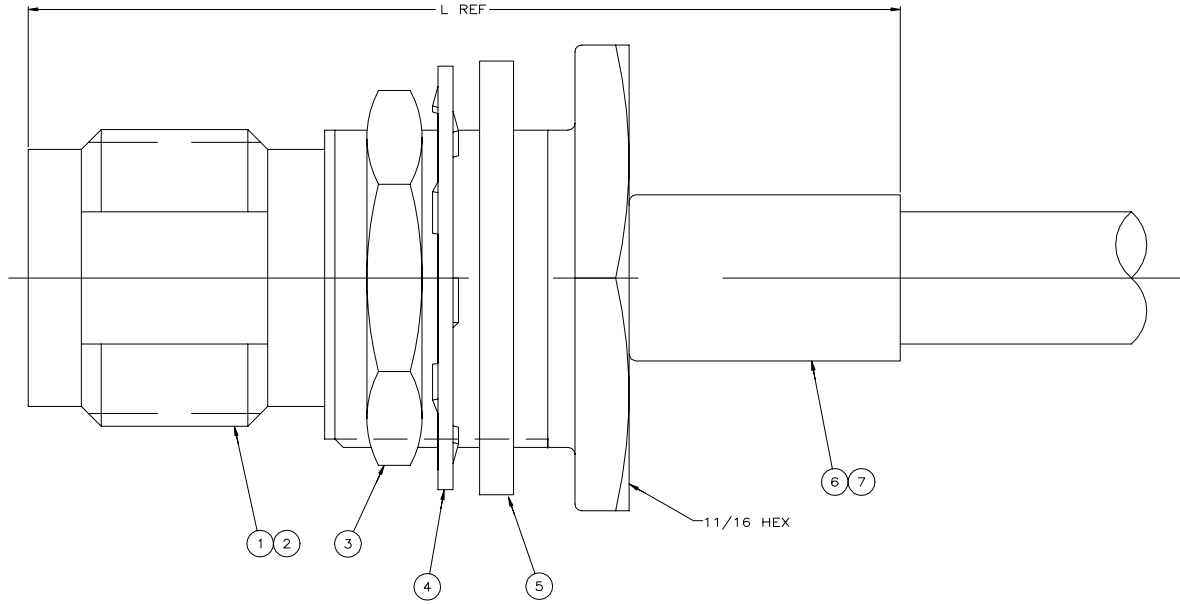
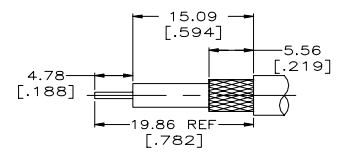


| REVISIONS |    |                           |           |     |      |
|-----------|----|---------------------------|-----------|-----|------|
| P         | LR | DESCRIPTION               | DATE      | DRW | APPD |
| A         |    | REVISED PER ECR-20-008488 | 16JUN2020 | RZ  | RS   |

- △ USE HAND TOOL: 354940-1
- 2. MAXIMUM PANEL THICKNESS: 6.10 [.240]
- 3. SEE I.S. 9051
- △ OBSOLETE PARTS: OBSOLETE CIS STREAMLINING PER D.RENAUD/D.SINISI



RECOMMENDED PANEL CUTOUT  
SCALE: 3:1



RECOMMENDED STRIP LENGTH  
SCALE: 3:1

| OBsolete | RC-55/U, 55A/U, 55B/U, 223/U                | 34.93 | 1.375 | 220189-1 | -                 | 9-329099-0      | 329633         | 1-329632-2         | 1-329631-2      | 221149-6        | 414169-1              | 5414168-8   |
|----------|---|-------|-------|----------|-------------------|-----------------|----------------|--------------------|-----------------|-----------------|-----------------------|-------------|
|          | RC-142/U, 142A/U, 142B/U, 400/U             | 34.93 | 1.375 | 220189-1 | -                 | 9-225382-0      | 329633         | 1-329632-2         | 1-329631-2      | 2-221149-6      | 414169-1              | 5414168-5   |
|          | RC-188/U, 316/U TYPE DOUBLE BRAID           | 34.93 | 1.375 | 58330-1  | 21427-4           | 9-329049-0      | 329633         | 1-329632-2         | 1-329631-2      | 2-221149-0      | 414169-3              | 5414168-4   |
|          | RC-174/U, 188/U, 316/U                      | 34.93 | 1.375 | 220210-1 | 21427-4           | 9-328666-0      | 329633         | 1-329632-2         | 1-329631-2      | 2-221149-0      | 414169-3              | 5414168-3   |
|          | RC-58/U, 58A/U, 58B/U, 58C/U, 141/U, 141A/U | 34.93 | 1.375 | 220189-1 | -                 | 9-50427-1       | 329633         | 1-329632-2         | 1-329631-2      | 221149-6        | 414169-1              | 5414168-1   |
|          | FOR USE WITH CABLE                          | L     |       | DIE SET  | △ 7 BUSHING QTY=1 | 6 FERRULE QTY=1 | 5 GASKET QTY=1 | 4 LOCKWASHER QTY=1 | 3 JAM NUT QTY=1 | 2 CONTACT QTY=1 | 1 JACK ASSEMBLY QTY=1 | PART NUMBER |

THIS DRAWING IS A CONTROLLED DOCUMENT.

|                          |                  |
|--------------------------|------------------|
| DRW: ATTADIA - 31JUN2000 | DOCKS: 31JUN2000 |
| DR: HAVENER              | 31JUN2000        |
| AVD: LIBERTY             |                  |
| PRODUCT SPEC: 108-12046  |                  |
| APPLICATION SPEC: TNC    |                  |
| WEIGHT: 0.000000         | SIZE: A1         |
| CUSTOMER DRAWING         | SCALE: 10:1      |

TE Connectivity  
JACK ASSEMBLY  
BULKHEAD, COMMERCIAL  
TNC

RESTRICTED TO: 1 OF 1

## X-ON Electronics

Largest Supplier of Electrical and Electronic Components

*Click to view similar products for [RF Connectors / Coaxial Connectors](#) category:*

*Click to view products by [TE Connectivity](#) manufacturer:*

Other Similar products are found below :

[8915-1511-000](#) [89674-0827](#) [6001-7071-019](#) [6002-7051-003](#) [6002-7551-202](#) [6059674-1](#) [619550-1](#) [630059-000](#) [M39030/3-01N](#) [6500-7071-046](#) [6769](#) [CX050L2AQ](#) [7002-1541-010](#) [7002-1542-011](#) [7004-1512-000](#) [7009-1511-004](#) [7010-1511-000](#) [7029-1511-060](#) [7101-1541-010](#) [7101-1571-002](#) [7145-1521-002](#) [7203-1571-003](#) [7209-1511-011](#) [7210-1511-015](#) [7210-1511-019](#) [73137-5015](#) [73216-2241](#) [73404-2300](#) [7405-1521-005](#) [7405-1521-802](#) [8527](#) [8547](#) [FS11V](#) [877931](#) [9049-9513-000](#) [9074-9513-000](#) [9101-9573-002](#) [910A205F](#) [9130-9573-002](#) [PL11SC-026](#) [PL375-33](#) [PL40-5](#) [PL74C-221](#) [PL75MC-217](#) [PL803-7](#) [980-8666-005](#) [1200690078](#) [1-201144-1](#) [R107003010W](#) [R110A172100](#)