

4

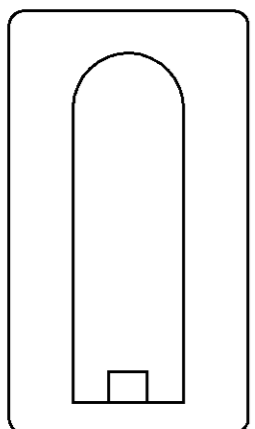
3

2

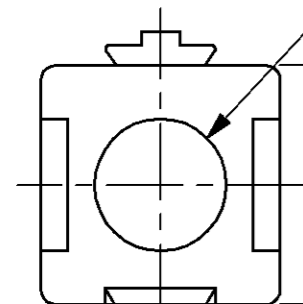
1

THIS DRAWING IS UNPUBLISHED. RELEASED FOR PUBLICATION ,19 .  
© COPYRIGHT 19 BY AMP INCORPORATED. ALL RIGHTS RESERVED.

LOC	DIST	REVISIONS			
P	LTR	DESCRIPTION	DATE	DWN	APVD
FT	60	E	REDRAWN & REV PER EC 0320-74-97	10 APR 97	-

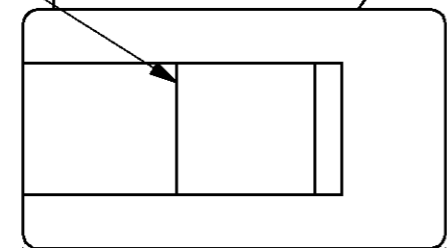


7.92  
[.312]

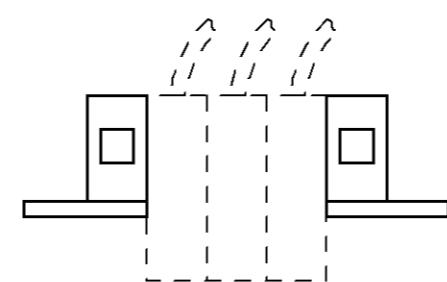


7.92  
[.312]

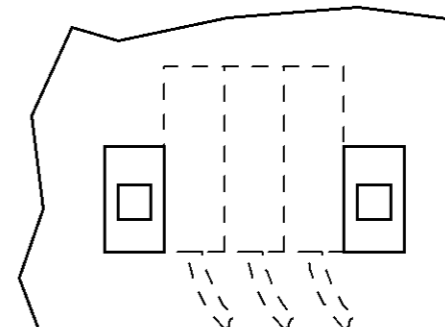
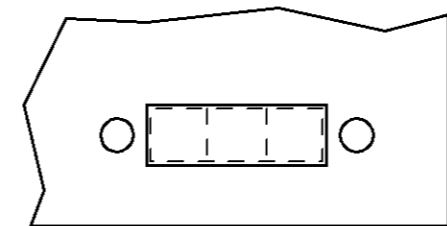
#8 CLEARANCE HOLE THRU



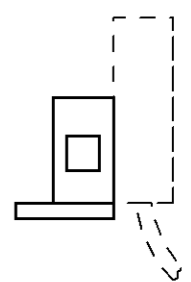
13.97  
[.550]



TYP THRU PANEL  
HOLE PATTERN



TYP SURFACE  
MTG PATTERN



TYP VERTICAL  
MOUNT

54315-1  
PART  
NUMBER

THIS DRAWING IS A CONTROLLED DOCUMENT.		DWN M. BINNER 10 APR 97	<b>AMP</b> AMP Incorporated Harrisburg, PA 17105-3608	
		CHK R. STONE 24 APR 97		
DIMENSIONS: mm [INCHES]		APVD M. MCALONIS 22 MAY 97	NAME	
TOLERANCES UNLESS OTHERWISE SPECIFIED:		PRODUCT SPEC 108-11026	MOUNTING ADAPTER, SERIES 1, POWER LOCK	
0 PLC ±-		APPLICATION SPEC 114-6032	SIZE	RESTRICTED TO
1 PLC ±-		WEIGHT	CAGE CODE	
2 PLC ±0.38 [.015]		CUSTOMER DRAWING	DRAWING NO	
3 PLC ±-		SCALE 4:1	114-6032	
4 PLC ±-		SHEET 1 OF 1	A3 00779 C-54315	
ANGLES ±-		REV E		
MATERIAL POLYCARBONATE, RED				
FINISH -				

## X-ON Electronics

Largest Supplier of Electrical and Electronic Components

*Click to view similar products for [Power to the Board](#) category:*

*Click to view products by [TE Connectivity](#) manufacturer:*

Other Similar products are found below :

[6450171-4](#) [6450552-7](#) [6600323-8](#) [6643429-1](#) [6646040-2](#) [6651939-1](#) [6766604-1](#) [120959-1](#) [1393557-2](#) [1393532-2](#) [1393532-3](#) [1393532-4](#)  
[1393557-1](#) [1600812-5](#) [1-6450861-2](#) [1744132-7](#) [1761122-1](#) [1766250-1](#) [1892109-1](#) [2-6450860-5](#) [2-6450870-0](#) [1-6450161-4](#) [1-6450850-6](#) [1-6450869-6](#) [1645526-2](#) [1-6600130-0](#) [2005243-2](#) [377-0020-11130](#) [TE34-12-16P-F0](#) [5-6450830-6](#) [5646956-4](#) [377-0080-11131A](#) [4-6450830-9](#)  
[4-6600333-3](#) [10125416-4050LF](#) [6600320-3](#) [3-6450860-5](#) [1888123-2](#) [6450166-1](#) [6643978-1](#) [6766605-1](#) [701-15-02109](#) [N11444](#) [6651938-1](#)  
[6450810-7](#) [46437-1112](#) [1-1589677-8](#) [5646956-5](#) [6450813-2](#) [6450129-4](#)