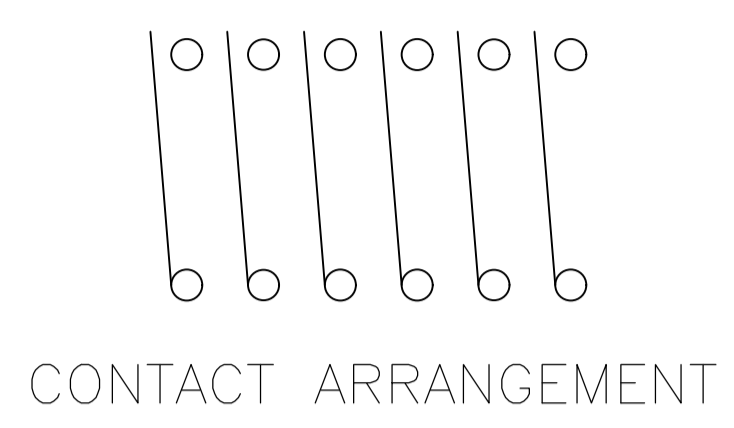
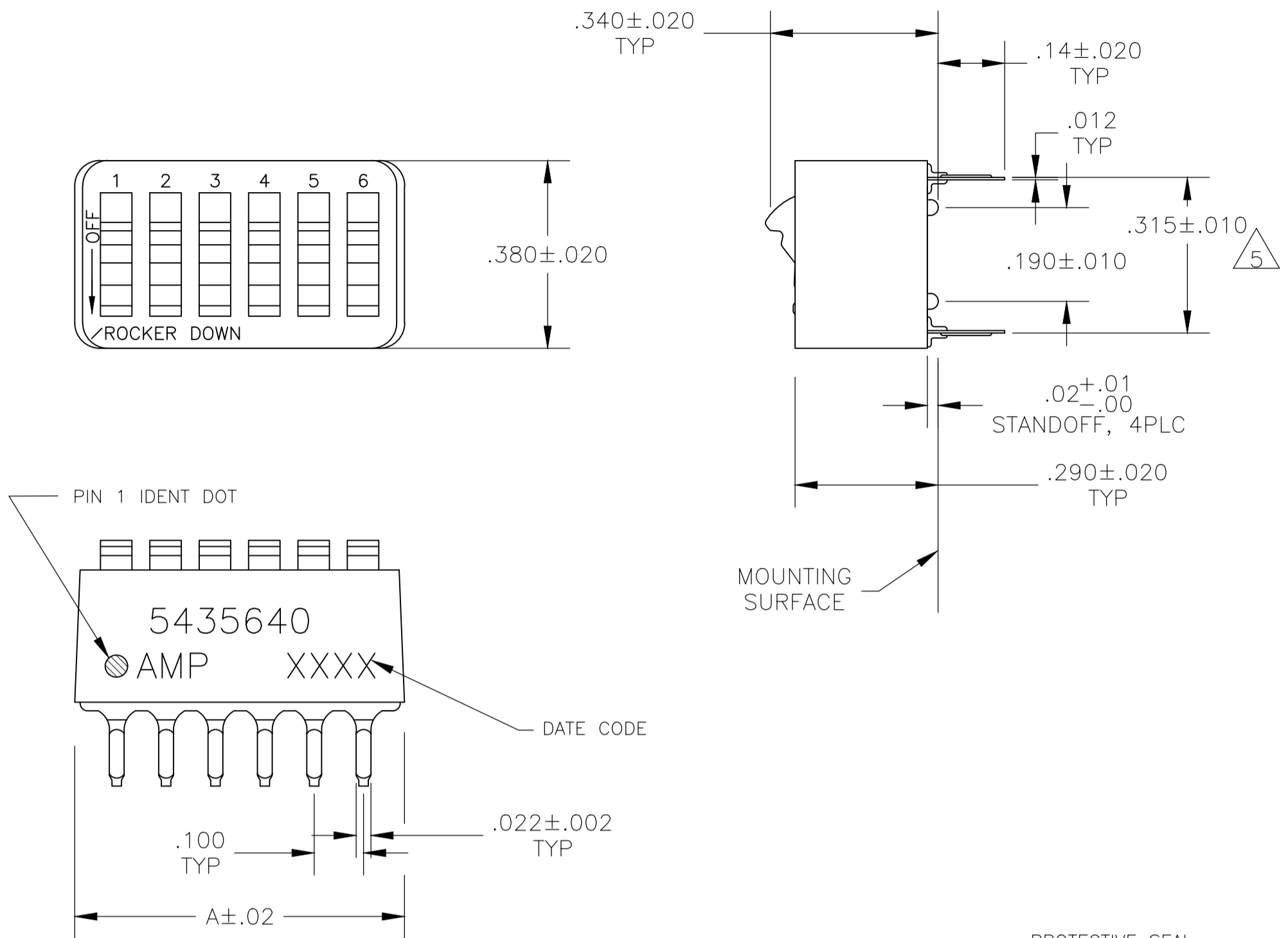


REVISIONS				
P	LTR	DESCRIPTION	DATE	APPD
C		ECO-20-004897	24AUG2020	SB JB



- 1 FOR ADDITIONAL SPECIFICATIONS SEE AMP PRODUCT SPEC 108-7532.
- 2 SWITCH SHOWN IN OPEN POSITION.
- 3 ALL CHARACTERS AND ROCKERS ARE WHITE, HOUSING IS BLUE.
- 4 LASER MARKING WILL VARY ON 2 AND 3 POSITION SIDES DUE TO SPACE RESTRICTIONS.
- 5 .315 DIMENSION APPLIES AT TERMINAL TIPS. TERMINALS ARE .300+.010 -.000 AT MOUNTING SURFACE.
- 6 STRIPPABLE TRANSPARENT SEAL, SEE FIG 1.
- 7 STRIPPABLE TRANSPARENT SEAL, SEE FIG 1.
- 8 MATERIAL: HOUSING & ROCKERS- POLYESTER CONTACTS & SOLDER LEAD-COPPER ALLOY
- 9 FINISH: CONTACTS- GOLD OVER NICKEL SOLDER LEAD- TIN OVER NICKEL
- 10 ALL MATERIALS AND FINISHES SHALL COMPLY WITH EU DIRECTIVE 2002 /95/EC OF 27JAN2003(ROHS).
- 11 OBSOLETE PARTS: OBSOLETE CIS STREAMLINING PER D.RENAUD/D.SINISI
- 12 MARKS WILL BE ADDED BY LASER MARK PROCESS.

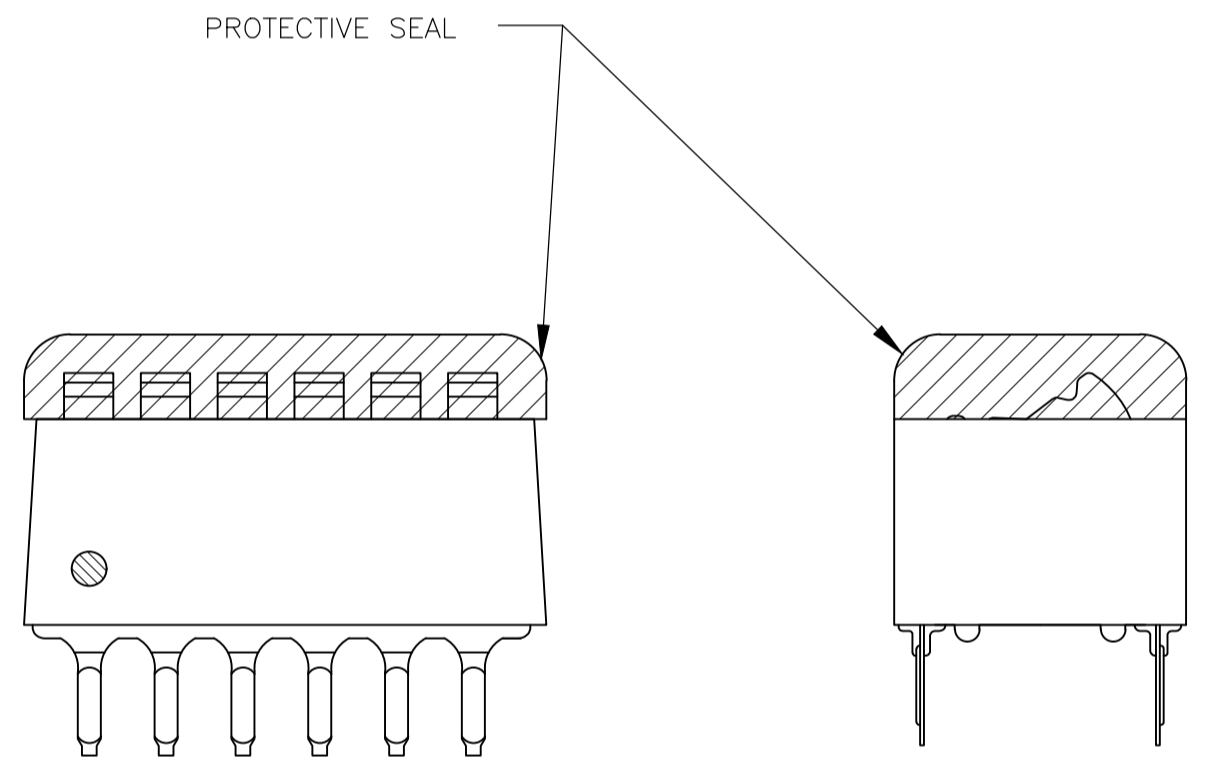


FIG 1

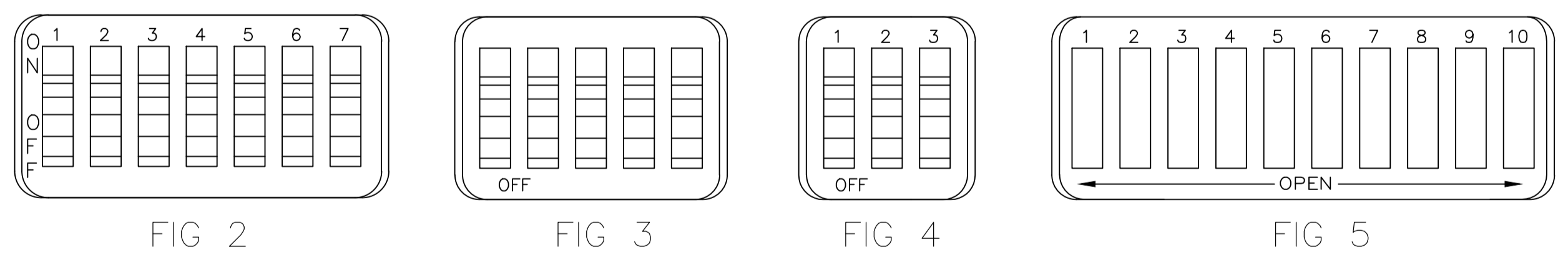


FIG 2

FIG 3

FIG 4

FIG 5

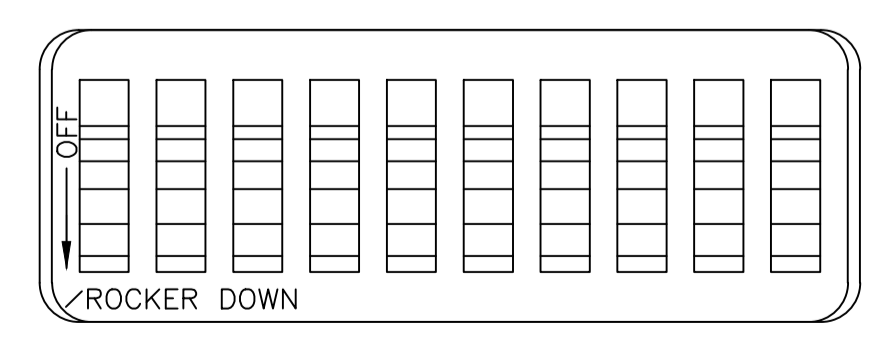


FIG 6

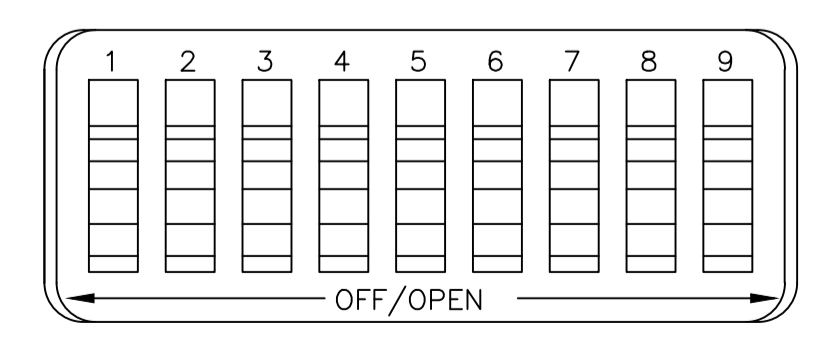


FIG 7

MARKING	FIG	1.08	10	NO OF POSN	PART NO.
OBSOLETE	FIG 6	1.08	10	6	5435640-1
	FIG 7	.58	5	6	5435640-0
		.48	4	5	5435640-9
OBSOLETE	FIG 5	.88	8	5	5435640-8
		.98	9	5	5435640-7
	.68	6	5	5435640-6	
	.58	5	5	5435640-5	
	.48	4	5	5435640-4	
OBSOLETE	FIG 2	.88	8	5	5435640-3
	FIG 5	1.08	10	5	5435640-1
OBSOLETE	FIG 3	.88	8	4	5435640-9
		.58	5	4	5435640-8
	NONE	1.08	10	4	5435640-7
AS SHOWN	AS SHOWN	1.28	12	4	5435640-3
		1.08	10	4	5435640-1
		.98	9	4	5435640-0
		.88	8	3	5435640-9
		.78	7	3	5435640-8
		.68	6	3	5435640-7
		.58	5	3	5435640-6
		.48	4	3	5435640-5
		1.28	12	3	5435640-2
		.38	3	3	5435640-0
FIG 4	.28	2	2	5435640-9	
	1.08	10	5435640-7		
AS SHOWN	AS SHOWN	.98	9	5435640-6	
		.88	8	5435640-5	
		.68	6	5435640-4	
		.58	5	5435640-3	
		.48	4	5435640-2	
		.78	7	5435640-1	
TOP MARKING	A				PART NO.

THIS DRAWING IS A CONTROLLED DOCUMENT.

DIMENSIONS: INCHES

TOLERANCES UNLESS OTHERWISE SPECIFIED:

0. PLC	± .005
1. PLC	± .005
2. PLC	± .005
3. PLC	± .005
4. PLC	± .005
ANGLES	± .005

MATERIAL: SEE NOTES

FINISH: SEE NOTES

WEIGHT: --

CUSTOMER DRAWING

DIN: BSV 08JAN2005

CIK: 13SEP05

APVD: M. SARVER 13SEP05

NAME: SWITCH ASSY, DIP, TYPE C, 7100 SERIES, SPST, STANDARD

SIZE: A1

SCALE: 4:1

SHEET: 1 OF 1

REV: C

STE TE Connectivity

## X-ON Electronics

Largest Supplier of Electrical and Electronic Components

*Click to view similar products for [DIP Switches/SIP Switches](#) category:*

*Click to view products by [TE Connectivity](#) manufacturer:*

Other Similar products are found below :

[78M03S](#) [79B10T](#) [8136-475G4T](#) [G7G-1A2-CB-DC12](#) [H7CZL8AC100240](#) [A7SS-M](#) [A8CA-201](#) [DRR60016](#) [DRS4016](#) [1825008-1](#) [1825444-1](#) [25.350.0653.0](#) [SBS 5004 TG](#) [SDA10H1BDA](#) [97R06ST](#) [A2C-2A5](#) [1825444-7](#) [ADE08SA04](#) [ADE12S04](#) [192960010](#) [2-1825058-8](#) [25.330.0653.1](#) [25.352.0353.0](#) [CXDRIVEV2X](#) [IKN0600000](#) [IKN0800000](#) [LA2-002-DC24](#) [DBS1003](#) [438872000](#) [DRD10CRAE04](#) [DSR02T](#) [DSS 208 N](#) [E2FMX2D1M1TGJ03M](#) [NDI10H](#) [219-9MSTP](#) [204-6ES](#) [EPM02FV](#) [701521596](#) [NDS08V](#) [76SB05](#) [79A10](#) [TD06H0SK1](#) [Z7.255.9027.0](#) [1-1825058-3](#) [1825428-4](#) [219-10LPSTF](#) [E3ZG6111D03M](#) [G4D212PUSTV2DC5](#) [NDI05H](#) [EPG301BT06](#)