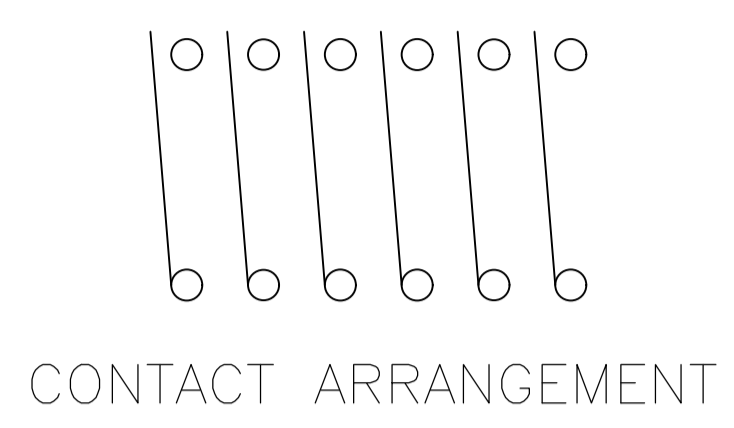
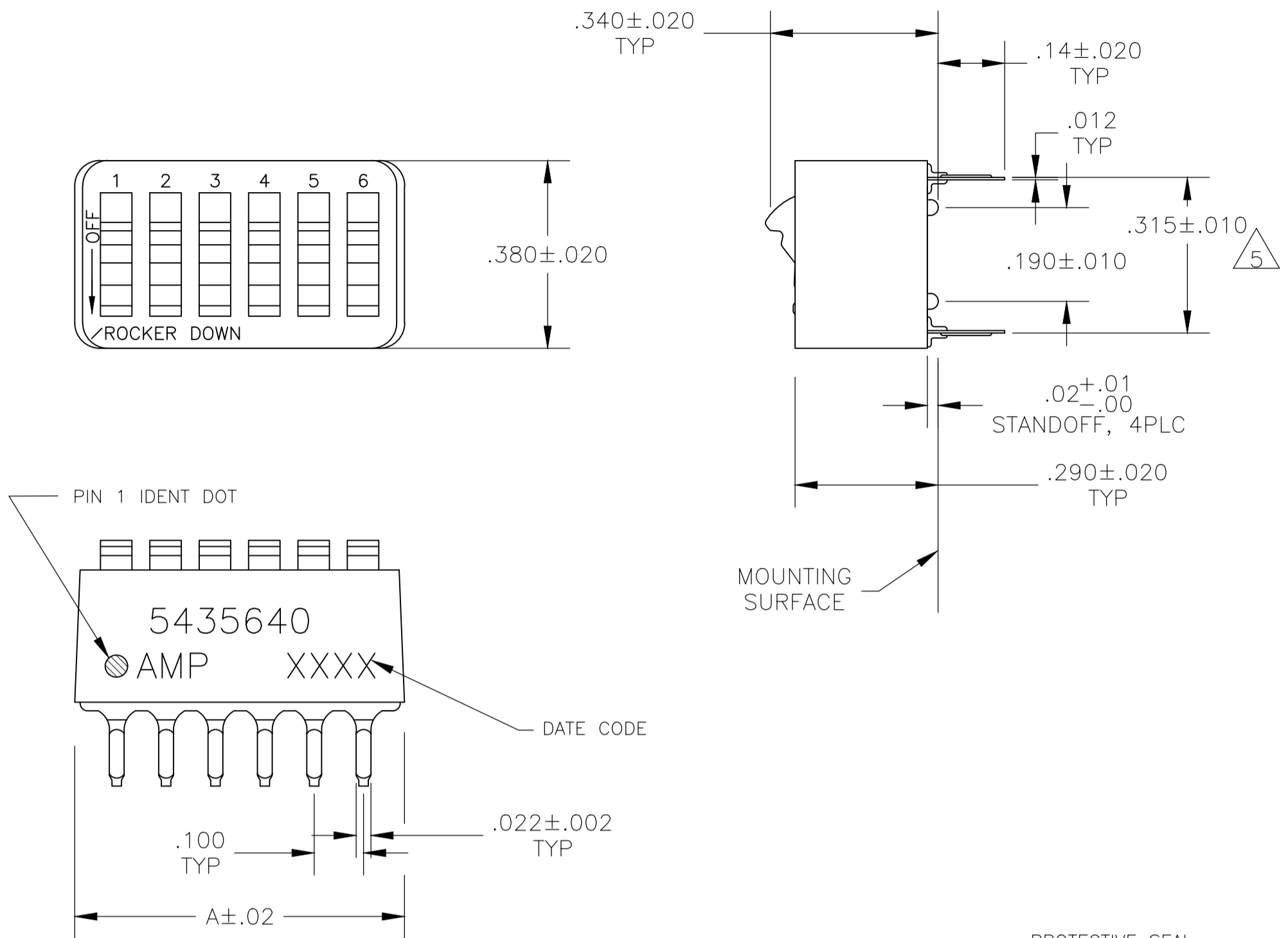


| REVISIONS | | | | |
|-----------|-----|---------------|-----------|-------|
| P | LTR | DESCRIPTION | DATE | APPD |
| C | | ECO-20-004897 | 24AUG2020 | SB JB |



- 1 FOR ADDITIONAL SPECIFICATIONS SEE AMP PRODUCT SPEC 108-7532.
- 2 SWITCH SHOWN IN OPEN POSITION.
- 3 ALL CHARACTERS AND ROCKERS ARE WHITE, HOUSING IS BLUE.
- 4 LASER MARKING WILL VARY ON 2 AND 3 POSITION SIDES DUE TO SPACE RESTRICTIONS.
- 5 .315 DIMENSION APPLIES AT TERMINAL TIPS. TERMINALS ARE .300+.010 -.000 AT MOUNTING SURFACE.
- 6 STRIPPABLE TRANSPARENT SEAL, SEE FIG 1.
- 7 STRIPPABLE TRANSPARENT SEAL, SEE FIG 1.
- 8 MATERIAL: HOUSING & ROCKERS- POLYESTER CONTACTS & SOLDER LEAD-COPPER ALLOY
- 9 FINISH: CONTACTS- GOLD OVER NICKEL SOLDER LEAD- TIN OVER NICKEL
- 10 ALL MATERIALS AND FINISHES SHALL COMPLY WITH EU DIRECTIVE 2002 /95/EC OF 27JAN2003(ROHS).
- 11 OBSOLETE PARTS: OBSOLETE CIS STREAMLINING PER D.RENAUD/D.SINISI
- 12 MARKS WILL BE ADDED BY LASER MARK PROCESS.

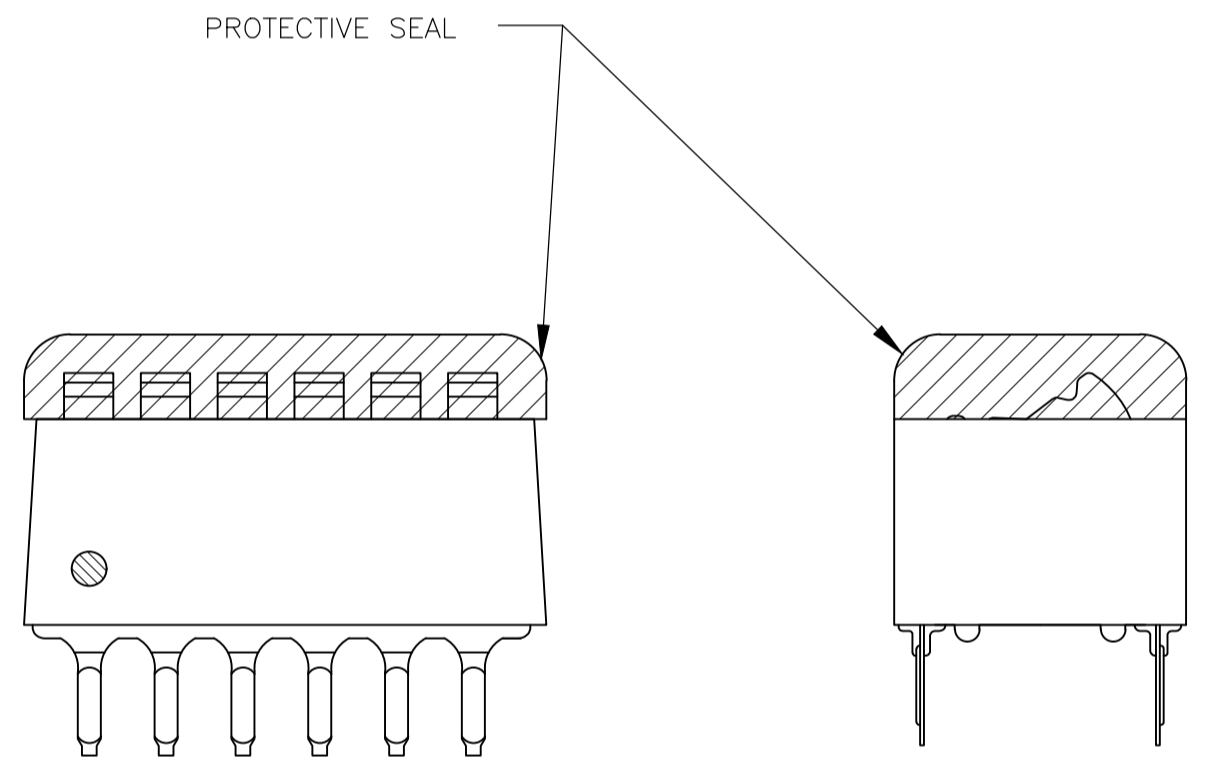


FIG 1

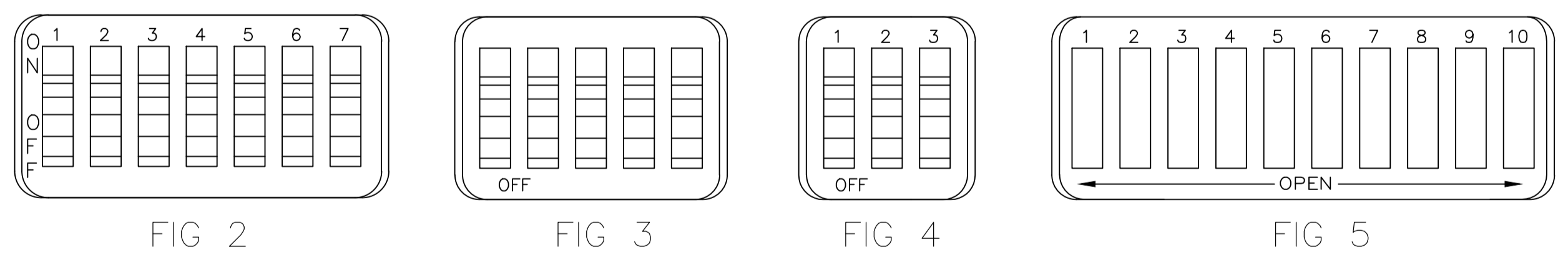


FIG 2

FIG 3

FIG 4

FIG 5

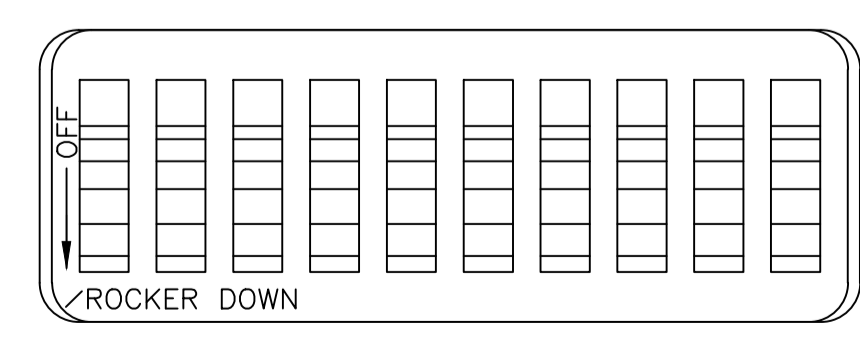


FIG 6

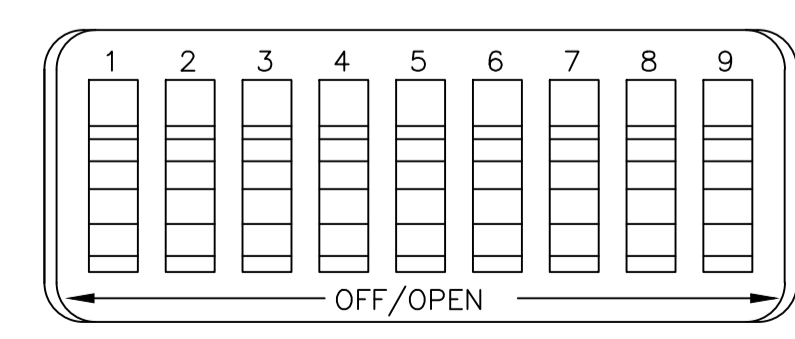


FIG 7

| FIG | NO OF POSN | NO OF POSN | NO OF POSN | NO OF POSN |
|-------------|------------|------------|--------------|--------------|
| OBSOLETE | FIG 6 | 1.08 | 10 | -6-5435640-1 |
| | FIG 7 | .58 | 5 | -6-5435640-0 |
| | | .48 | 4 | -5-5435640-9 |
| OBSOLETE | FIG 5 | .88 | 8 | 5-5435640-8 |
| | | .98 | 9 | 5-5435640-7 |
| | .68 | 6 | -5-5435640-6 | |
| | .58 | 5 | -5-5435640-5 | |
| | .48 | 4 | 5-5435640-4 | |
| OBSOLETE | FIG 2 | .88 | 8 | 5-5435640-3 |
| | FIG 5 | 1.08 | 10 | 5-5435640-1 |
| | .88 | 8 | 5-5435640-0 | |
| OBSOLETE | FIG 3 | .88 | 8 | -4-5435640-9 |
| | | .58 | 5 | 4-5435640-8 |
| | NONE | 1.08 | 10 | -4-5435640-7 |
| OBSOLETE | AS SHOWN | 1.28 | 12 | -4-5435640-3 |
| | | 1.08 | 10 | 4-5435640-1 |
| | | .98 | 9 | 4-5435640-0 |
| | | .88 | 8 | 3-5435640-9 |
| | | .78 | 7 | 3-5435640-8 |
| | | .68 | 6 | 3-5435640-7 |
| | | .58 | 5 | 3-5435640-6 |
| | | .48 | 4 | 3-5435640-5 |
| | | 1.28 | 12 | 3-5435640-2 |
| | | .38 | 3 | 3-5435640-0 |
| FIG 4 | .28 | 2 | 2-5435640-9 | |
| | 1.08 | 10 | 5435640-7 | |
| AS SHOWN | .98 | 9 | 5435640-6 | |
| | .88 | 8 | 5435640-5 | |
| | .68 | 6 | 5435640-4 | |
| | .58 | 5 | 5435640-3 | |
| | .48 | 4 | 5435640-2 | |
| | .78 | 7 | 5435640-1 | |
| TOP MARKING | A | NO OF POSN | PART NO. | |

THIS DRAWING IS A CONTROLLED DOCUMENT.

| | | | | | | | |
|--------------------|--|-----------|-----------|-----------|--------------|---------------|------------|
| DIMENSIONS: INCHES | TOLERANCES UNLESS OTHERWISE SPECIFIED: | 0 PLC ± - | 1 PLC ± - | 2 PLC ± - | 3 PLC ± .005 | 4 PLC ± - | ANGLES ± - |
| MATERIAL SEE NOTES | FINISH SEE NOTES | WEIGHT | SIZE | CAGE CODE | DRAWING NO | RESTRICTED TO | |

TE Connectivity

SWITCH ASSY, DIP, TYPE C, 7100 SERIES, SPST, STANDARD

00779 5435640

CUSTOMER DRAWING SCALE 4:1 SHEET 1 OF 1 REV C

X-ON Electronics

Largest Supplier of Electrical and Electronic Components

Click to view similar products for [DIP Switches/SIP Switches](#) category:

Click to view products by [TE Connectivity](#) manufacturer:

Other Similar products are found below :

[78M03S](#) [79B10T](#) [8136-475G4T](#) [G7G-1A2-CB-DC12](#) [H7CZL8AC100240](#) [A7SS-M](#) [A8CA-201](#) [DRR60016](#) [DRS4016](#) [1825008-1](#) [1825444-1](#) [25.350.0653.0](#) [SDA10H1BDA](#) [97R06ST](#) [A2C-2A5](#) [1825444-7](#) [ADE08SA04](#) [ADE12S04](#) [192960010](#) [2-1825058-8](#) [25.330.0653.1](#) [25.352.0353.0](#) [CXDRIVEV2X](#) [IKN0600000](#) [IKN0800000](#) [LA2-002-DC24](#) [DBS1003](#) [438872000](#) [DRD10CRAE04](#) [DSR02T](#) [DSS 208 N](#) [E2FMX2D1M1TGJ03M](#) [NDI10H](#) [219-9MSTP](#) [204-6ES](#) [EPM02FV](#) [701521596](#) [NDS08V](#) [76SB05](#) [79A10](#) [TD06H0SK1](#) [Z7.255.9027.0](#) [1-1825058-3](#) [1825428-4](#) [219-10LPSTF](#) [E3ZG6111D03M](#) [G4D212PUSTV2DC5](#) [195-7MSTN](#) [NDI05H](#) [EPG301BT06](#)