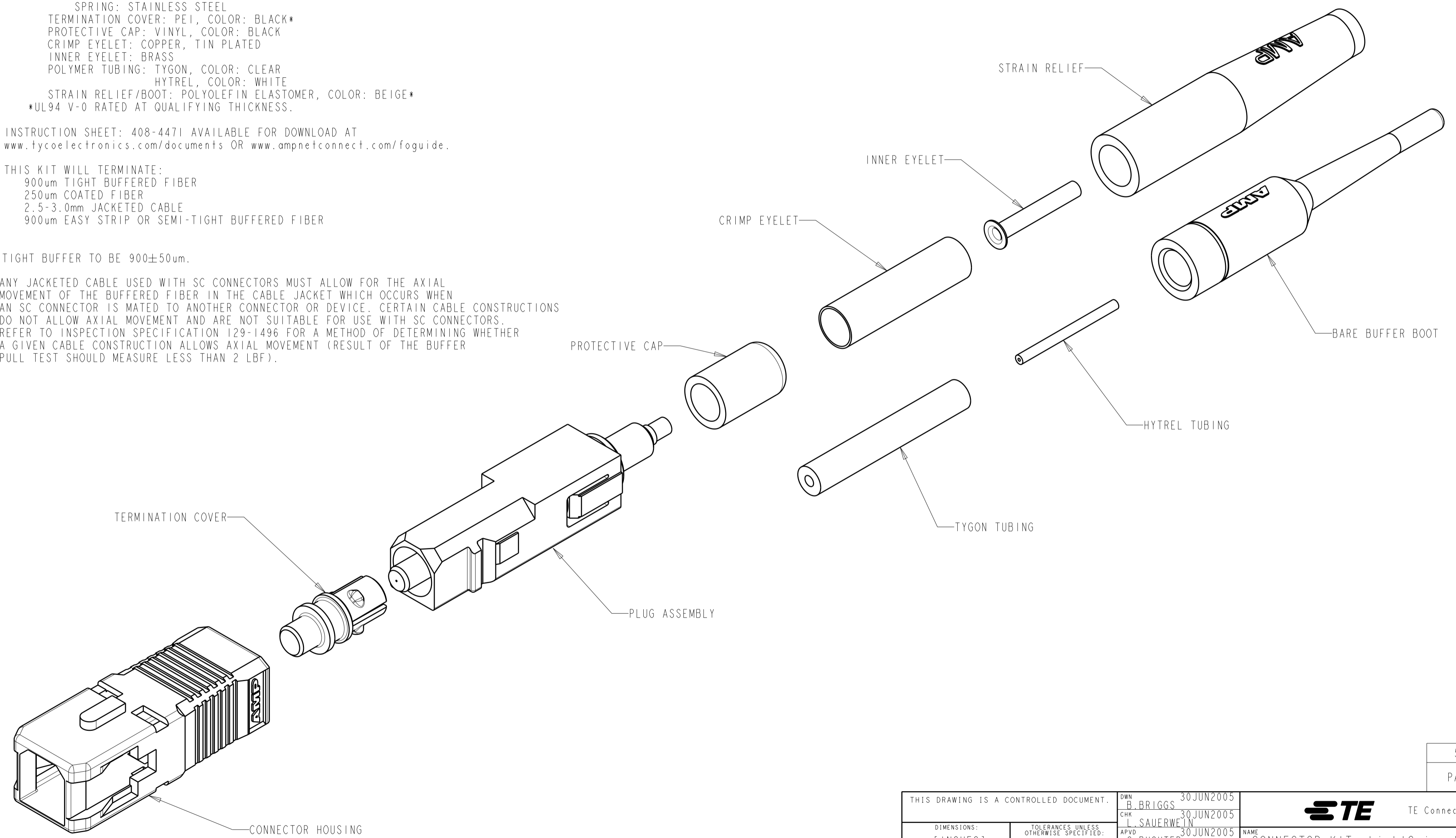


THIS DRAWING IS UNPUBLISHED. RELEASED FOR PUBLICATION 20  
 © COPYRIGHT 20 ALL RIGHTS RESERVED.

LOC	DIST	REVISIONS			
P	LTR	DESCRIPTION	DATE	DWN	APVD
CE	00				
		DI	REVISED PER ECO-11-005139	27APR2011	RK HMR

1 MATERIAL:  
 CONNECTOR HOUSING: POLYESTER PBT, COLOR: BEIGE\*  
 PLUG ASSEMBLY:  
 PLUG BODY: PAS, COLOR: BEIGE\*  
 INTERNAL BODY: BRASS, NICKEL PLATED  
 INTERNAL COMPONENTS: PEI, COLOR: NATURAL  
 FERRULE: CERAMIC  
 FERRULE BASE: ALUMINUM ALLOY  
 PLUNGER: ALUMINUM ALLOY  
 SPRING: STAINLESS STEEL  
 TERMINATION COVER: PEI, COLOR: BLACK\*  
 PROTECTIVE CAP: VINYL, COLOR: BLACK  
 CRIMP EYELET: COPPER, TIN PLATED  
 INNER EYELET: BRASS  
 POLYMER TUBING: TYGON, COLOR: CLEAR  
 HYTREL, COLOR: WHITE  
 STRAIN RELIEF/BOOT: POLYOLEFIN ELASTOMER, COLOR: BEIGE\*  
 \*UL94 V-0 RATED AT QUALIFYING THICKNESS.

- 2. INSTRUCTION SHEET: 408-4471 AVAILABLE FOR DOWNLOAD AT  
[www.tycoelectronics.com/documents](http://www.tycoelectronics.com/documents) OR [www.ampnetconnect.com/foguide](http://www.ampnetconnect.com/foguide).
- 3. THIS KIT WILL TERMINATE:  
 900um TIGHT BUFFERED FIBER  
 250um COATED FIBER  
 2.5-3.0mm JACKETED CABLE  
 900um EASY STRIP OR SEMI-TIGHT BUFFERED FIBER
- 4. TIGHT BUFFER TO BE 900±50um.
- 5. ANY JACKETED CABLE USED WITH SC CONNECTORS MUST ALLOW FOR THE AXIAL MOVEMENT OF THE BUFFERED FIBER IN THE CABLE JACKET WHICH OCCURS WHEN AN SC CONNECTOR IS MATED TO ANOTHER CONNECTOR OR DEVICE. CERTAIN CABLE CONSTRUCTIONS DO NOT ALLOW AXIAL MOVEMENT AND ARE NOT SUITABLE FOR USE WITH SC CONNECTORS. REFER TO INSPECTION SPECIFICATION 129-1496 FOR A METHOD OF DETERMINING WHETHER A GIVEN CABLE CONSTRUCTION ALLOWS AXIAL MOVEMENT (RESULT OF THE BUFFER PULL TEST SHOULD MEASURE LESS THAN 2 LBF).



5492643-1  
 PART NUMBER

THIS DRAWING IS A CONTROLLED DOCUMENT.		DWN B. BRIGGS	30 JUN 2005	TE Connectivity NAME CONNECTOR KIT, LightCrimp Plus SC 62.5/125um, MM			
DIMENSIONS: mm [ INCHES ]		CHK L. SAUERWEIN	30 JUN 2005				
TOLERANCES UNLESS OTHERWISE SPECIFIED:		APVD S. BUCHTER	30 JUN 2005				
0 PLC ±- 1 PLC ±0.1 2 PLC ±0.02 3 PLC ±0.005 4 PLC ±0.0005 ANGLES ± FINISH		PRODUCT SPEC	-				
MATERIAL	△	APPLICATION SPEC	-	SIZE	CAGE CODE	DRAWING NO	RESTRICTED TO
		WEIGHT	-	A2	00779	5492643	-
CUSTOMER DRAWING				SCALE	4:1	SHEET	OF
							REV
							DI

## X-ON Electronics

Largest Supplier of Electrical and Electronic Components

*Click to view similar products for [Fibre Optic Connectors](#) category:*

*Click to view products by [TE Connectivity](#) manufacturer:*

Other Similar products are found below :

[0004700001](#) [6100-R](#) [6313](#) [F709034706](#) [F709722200](#) [F709730000](#) [F718183204](#) [F727403500](#) [F727752800](#) [8119](#) [9440F20-27S-190](#) [944-120-6001](#) [9441F10SL-3S](#) [9444W28-21S](#) [9444W36-10S](#) [9446F10SL-4S](#) [9446W20-16S](#) [953-101-5310-P](#) [954-101-57202B](#) [A0270169](#) [12-9122](#) [12-5702](#) [AX101713](#) [AX102420](#) [AX103923](#) [AX104024](#) [AX104193](#) [AX104230](#) [AX104562](#) [AX105203-B25](#) [AX105205-S1](#) [EHSC2M](#) [181-011-126](#) [181-011-S](#) [181-057-126](#) [HRFC-R2\(40\)](#) [NKSOPBUY](#) [20500002116](#) [2064996-1](#) [20800001065](#) [2170](#) [9132](#) [2612](#) [2620](#) [9291](#) [9440F16-10S](#) [9440F20-18S](#) [9446F16-10S-190](#) [953-106-50231](#) [953-120-5003](#)