

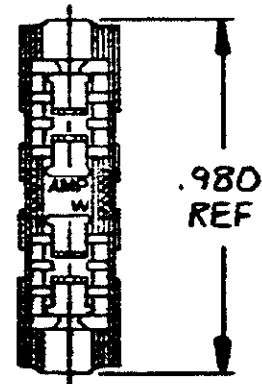
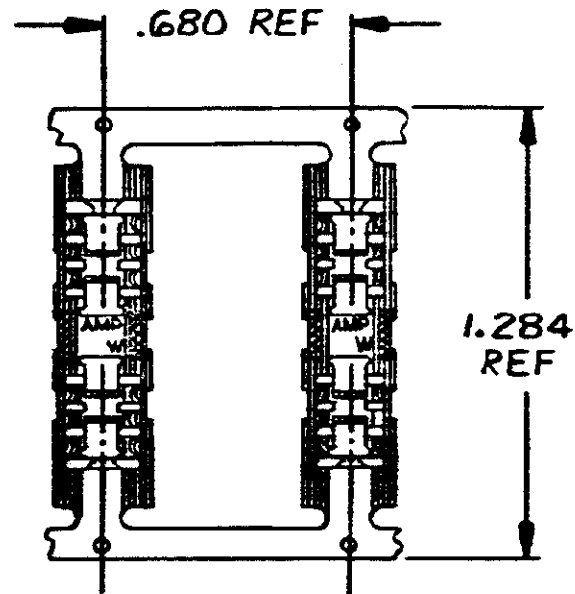
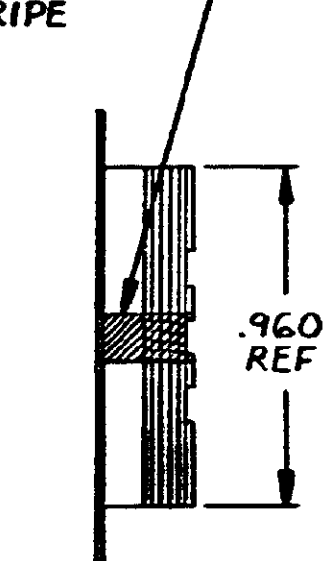
© COPYRIGHT 1973 BY AMP INCORPORATED, HARRISBURG, PA.  
 ALL INTERNATIONAL RIGHTS RESERVED. AMP INCORPORATED PRODUCTS  
 COVERED BY U. S. AND FOREIGN PATENTS AND/OR PATENTS PENDING.

LOC AA DIST 2212

REVISIONS						
P	F	ZONE	LTR	DESCRIPTION	DATE	APPROVED
E			E	REV E REDRAWN ECN T-469	2/27/78	VS / RR
F			F	CHG WIRE RANGE PER ECN T-617	3-15-79	MZ
G	✓		G	ADDED -7 PER NPI C79-104	12-12-79	VS

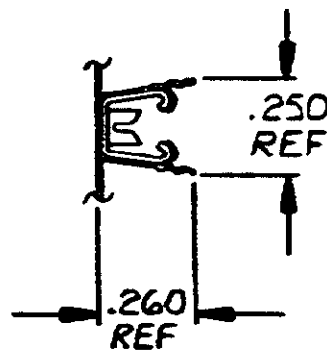
D  
C  
B  
A

BROWN COLOR STRIPE



STRIP FORM

LOOSE - PIECE



- 1. TIN PLATED BRASS ON BROWN STRIPED POLYESTER FILM.
- 2. WIRE RANGE : .91MM TO .51MM.

STRIP FORM REEL-IN-BOX	552043-7
LOOSE - PIECE	552043-2
STRIP FORM ON REEL	552043-1

DESCRIPTION	PART NO
-------------	---------

UNLESS OTHERWISE SPECIFIED DIMENSIONS ARE IN INCHES. TOLERANCES ON: DECIMALS ± .005 ANGLES ± .1°	CONTRACT NO	AMP INCORPORATED Harrisburg, Pa.			
	DR <i>Victor E. Stark</i> 2/27/78				
	MATERIAL	CHK <i>R. Reed</i> 3/10/78	NAME MINI-CONNECTOR, BROWN, PICABOND (INTERNATIONAL)		
	FINISH	APPD <i>A. Reed</i> 3/20/78 APPD <i>A. Reed</i> 3/21/78	SIZE <b>B</b>	CODE IDENT NO <b>00779</b>	NUMBER <b>552043</b>
OTHER APPD		SCALE <b>2-1</b>	SHEET <b>1 OF 1</b>		

## X-ON Electronics

Largest Supplier of Electrical and Electronic Components

*Click to view similar products for [Modular Connectors / Ethernet Connectors](#) category:*

*Click to view products by [TE Connectivity](#) manufacturer:*

Other Similar products are found below :

[8949-H88/06BLKA/SN](#) [74441-0010/BKN](#) [MP1010RX-1000](#) [MP44RX-1000](#) [PHJ-4P4C-1-V-4](#) [PHP-6P6C-5](#) [GAX-3-66](#) [GAX-8-62](#) [GDCX-PA-66-50](#) [GDCX-PN-64](#) [GDCX-PN-66](#) [GDCX-PN-66-50](#) [GDLX-A-66](#) [GDLX-N-66](#) [GDLX-S-66](#) [GDLX-S-88K](#) [GDTX-S-88-50](#) [GDX-PA-1010](#) [GLX-N-1010M-BLK](#) [GLX-S-88M-BLK](#) [GMX-N-1010](#) [GMX-S-1010](#) [GMX-S-66](#) [GMX-SMT4-N-88](#) [GPX-2-64](#) [GSGX-N-2-88](#) [GSGX-N-4-88](#) [GSX-NS2-88-3.05](#) [GSX-NS2-88-3.05-50](#) [GSX-NS-88-3.05-50](#) [PT-108A-8C-UL](#) [PT-J951-8C](#) [PTS-J531-8CS-50UL](#) [1-1775629-2](#) [A-2014-0-4](#) [GWLX-S-88-GR](#) [GWLX-S9-88-YG](#) [DC-1021-8-WH-6](#) [1300530003](#) [1324640-4](#) [RJ11FTVC2G](#) [RJ11FTVC2N](#) [RJFTVX2SA1G](#) [132764-001](#) [1413235](#) [MP88X-1000](#) [MPS88RX-5000](#) [E5288-S000K3-L](#) [E5908-15A242-L](#) [155302-001](#)