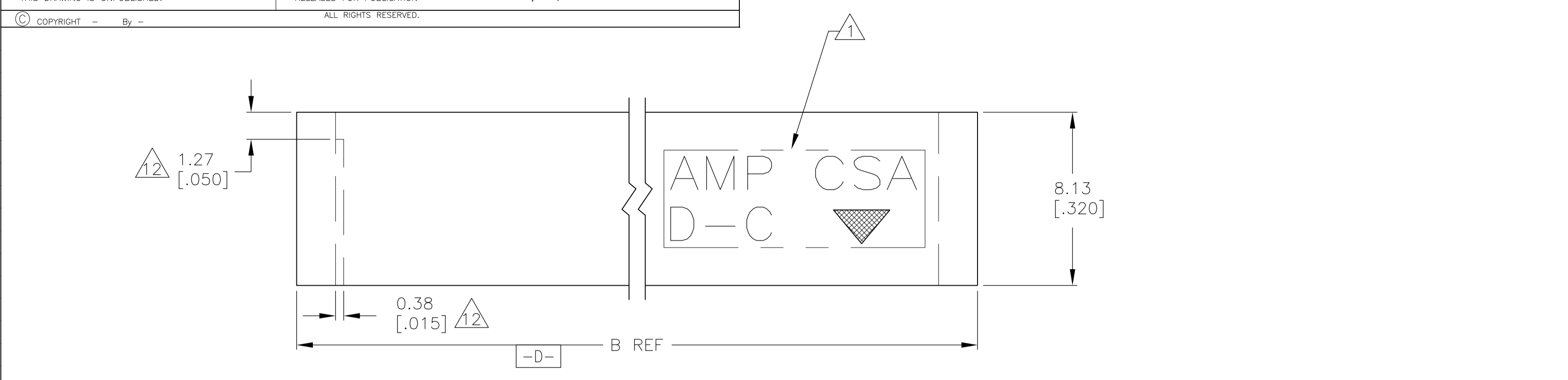
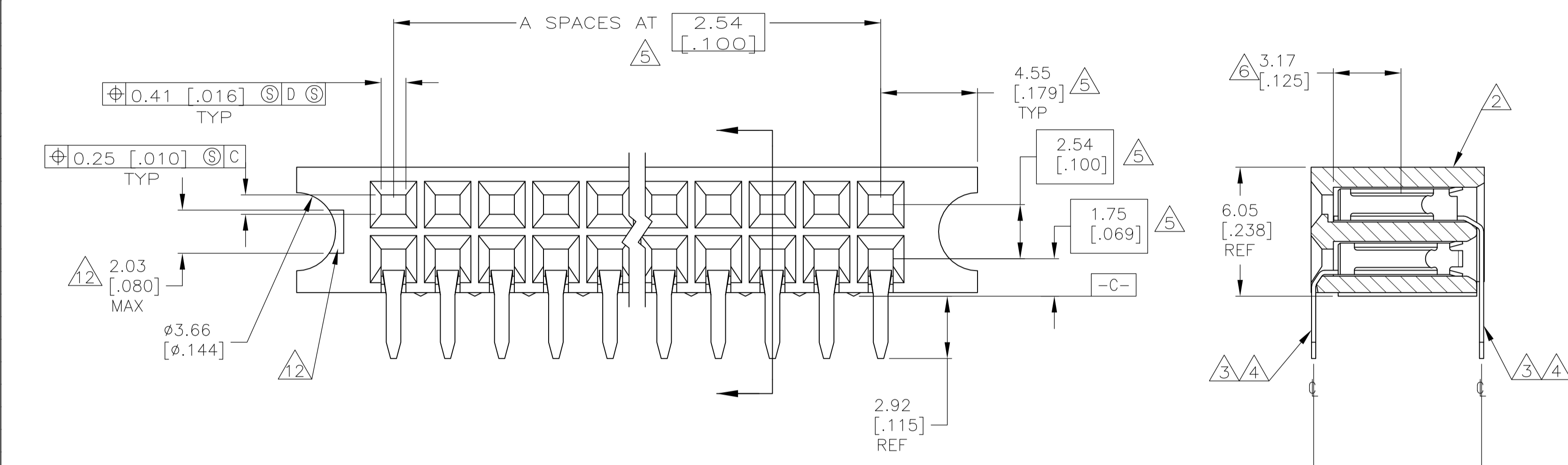


REVISED PER			ECO-11-004587			DATE	DWN	APVD
T4	REVISED	PER	ECO-11-004587	11MAR11	RK	HMR		

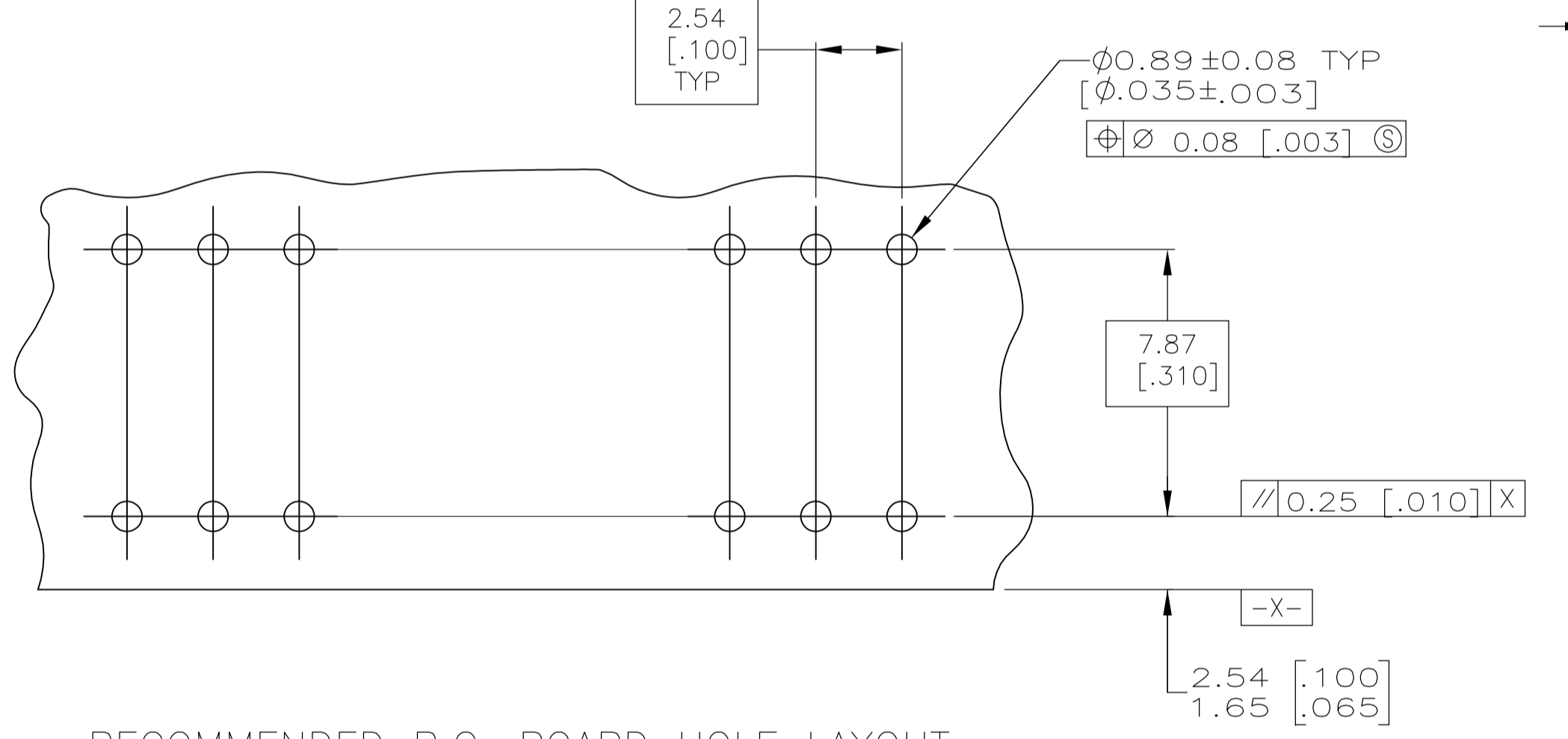


- ① CONTACT FINISH: DUPLEX PLATED 0.00038 [.000015] GOLD IN CONTACT AREA, 0.00127-0.00254 [.000050-.000100] BRIGHT TIN-LEAD ON SOLDER TAILS, ALL OVER 0.00127 [.000050] NICKEL.
- ② RECESSED AREA AROUND MOLD GATE IS OPTIONAL. THIS FEATURE IS ALLOWABLE ON EITHER SIDE OF HOUSING OR MAY NOT BE PRESENT AT ALL.
- ③ OBSOLETE PARTS: OBSOLETE CIS STREAMLINING PER D.RENAUD/D.SINISI



⑬	⑬	19.25 [.758]	4	10	10	8-532955-1			
⑬	⑬	34.49 [1.358]	10	22	10	8-532955-0			
⑬	⑬	47.19 [1.858]	15	32	10	7-532955-9			
⑬	⑬	235.15 [9.258]	89	180	10	7-532955-8			
⑬	⑬	209.75 [8.258]	79	160	10	7-532955-7			
⑬	⑬	125.93 [4.958]	46	94	10	7-532955-6			
⑬	⑬	24.33 [.958]	6	14	10	7-532955-5			
⑬	⑬	62.43 [2.458]	21	44	10	7-532955-4			
⑬	⑬	260.55 [10.258]	99	200	10	7-532955-3			
⑬	⑬	194.51 [7.658]	73	148	10	7-532955-2			
⑬	⑬	184.35 [7.258]	69	140	10	7-532955-1			
⑬	⑬	171.65 [6.758]	64	130	10	7-532955-0			
⑬	⑬	169.11 [6.658]	63	128	10	6-532955-9			
⑬	⑬	158.95 [6.258]	59	120	10	6-532955-8			
⑬	⑬	146.25 [5.758]	54	110	10	6-532955-7			
⑬	⑬	133.55 [5.258]	49	100	10	6-532955-6			
⑬	⑬	128.47 [5.058]	47	96	10	6-532955-5			
⑬	⑬	120.85 [4.758]	44	90	10	6-532955-4			
⑬	⑬	113.23 [4.558]	42	86	10	6-532955-3			
⑬	⑬	108.15 [4.258]	39	80	10	6-532955-2			
⑬	⑬	97.99 [3.858]	35	72	10	6-532955-1			
⑬	⑬	95.45 [3.758]	34	70	10	6-532955-0			
⑬	⑬	82.75 [3.258]	29	60	10	5-532955-9			
⑬	⑬	70.05 [2.758]	24	50	10	5-532955-8			
⑬	⑬	57.35 [2.258]	19	40	10	5-532955-7			
⑬	⑬	52.27 [2.058]	17	36	10	5-532955-6			
⑬	⑬	44.65 [1.758]	14	30	10	5-532955-5			
⑬	⑬	37.03 [1.458]	11	24	10	5-532955-4			
⑬	⑬	31.95 [1.258]	9	20	10	5-532955-3			
⑬	⑬	26.87 [1.058]	7	16	10	5-532955-2			
⑬	⑬	21.79 [.858]	5	12	10	5-532955-1			
FINISH	B	A	NO OF POSN	PART NUMBER	FINISH	B	A	NO OF POSN	PART NUMBER

⑩	⑨	⑧	21.79 [.858]	5	12	3-532955-2			
⑩	④	④	19.25 [.758]	4	10	3-532955-1			
⑩	④	④	34.49 [1.358]	10	22	3-532955-0			
⑩	④	④	47.19 [1.858]	15	32	2-532955-9			
⑩	④	④	235.15 [9.258]	89	180	2-532955-8			
⑩	④	④	209.75 [8.258]	79	160	2-532955-7			
⑩	④	④	125.93 [4.958]	46	94	2-532955-6			
⑩	④	④	24.33 [.958]	6	14	2-532955-5			
⑩	④	④	62.43 [2.458]	21	44	2-532955-4			
⑩	④	④	260.55 [10.258]	99	200	2-532955-3			
⑩	④	④	194.51 [7.658]	73	148	2-532955-2			
⑩	④	④	184.35 [7.258]	69	140	2-532955-1			
⑩	④	④	171.65 [6.758]	64	130	2-532955-0			
⑩	④	④	169.11 [6.658]	63	128	1-532955-9			
⑩	④	④	158.95 [6.258]	59	120	1-532955-8			
⑩	④	④	146.25 [5.758]	54	110	1-532955-7			
⑩	④	④	133.55 [5.258]	49	100	1-532955-6			
⑩	④	④	128.47 [5.058]	47	96	1-532955-5			
⑩	④	④	120.85 [4.758]	44	90	1-532955-4			
⑩	④	④	113.23 [4.558]	42	86	1-532955-3			
⑩	④	④	108.15 [4.258]	39	80	1-532955-2			
⑩	④	④	97.99 [3.858]	35	72	1-532955-1			
⑩	④	④	95.45 [3.758]	34	70	1-532955-0			
⑩	④	④	82.75 [3.258]	29	60	532955-9			
⑩	④	④	70.05 [2.758]	24	50	532955-8			
⑩	④	④	57.35 [2.258]	19	40	532955-7			
⑩	④	④	52.27 [2.058]	17	36	532955-6			
⑩	④	④	44.65 [1.758]	14	30	532955-5			
⑩	④	④	37.03 [1.458]	11	24	532955-4			
⑩	④	④	31.95 [1.258]	9	20	532955-3			
⑩	④	④	26.87 [1.058]	7	16	532955-2			
⑩	④	④	21.79 [.858]	5	12	532955-1			
FINISH	B	A	NO OF POSN	PART NUMBER	FINISH	B	A	NO OF POSN	PART NUMBER



RECOMMENDED P.C. BOARD HOLE LAYOUT

- ① "AMP", "CSA", "▼" AND "DATE CODE" WITH .062 ±.015 HIGH CHARACTERS WHERE SIZE PERMITS.
- ② HOUSING: 1-70 POSITION SIZES MAY BE PPS, GLASS-FILLED OR PCT, GLASS-FILLED. POSITION SIZES GREATER THAN 70 WILL BE PPS, GLASS-FILLED.
- ③ CONTACT: PHOSPHOR BRONZE.
- ④ CONTACT FINISH: DUPLEX PLATED 0.00038 [.000015] GOLD IN CONTACT AREA, 0.00127-0.00254 [.000050-.000100] BRIGHT TIN-LEAD ON SOLDER TAILS, ALL OVER 0.00127 [.000050] NICKEL.
- ⑤ THESE DIMENSIONS PERTAIN TO CAVITY C'S ONLY, NOT TO CONTACT LOCATIONS.
- ⑥ POINT OF MEASUREMENT FOR PLATING THICKNESS (INSIDE CONTACT BEAMS).
- ⑦ 7. CSA LOGO INK STAMPED WHITE ON HOUSING.
- ⑧ CONTACT FINISH: DUPLEX PLATED 0.00038 [.000015] GOLD IN CONTACT AREA, 0.00127-0.00254 [.000050-.000100] BRIGHT TIN ON SOLDER TAILS, ALL OVER 0.00127 [.000050] NICKEL.
- ⑨ SUPERSEDED BY 5-532955-1.
- ⑩ ROHS 2002/95/EC COMPLIANT

THIS DRAWING IS A CONTROLLED DOCUMENT.

DIMENSIONS: mm [INCHES]	TOLERANCES UNLESS OTHERWISE SPECIFIED: 0 PLC ± - 1 PLC ± - 2 PLC ± 0.13 [.005] 3 PLC ± - 4 PLC ± - ANGLES ± -	REVISED PER: 3/7/91 K.L.CLOUSER/UTA D SARVER APVD: - NAME: -	TE Connectivity	PRODUCT SPEC	RECEPTACLE ASSY, MOD II, DBL ROW, 2.54 X 2.54 [.100 X .100] CL, GUIDE PIN EARS, CLOSED ENTRY,	
MATERIAL: ②③ SEE TABLE	WEIGHT: -	SIZE: A1		DATE CODE: 00779	DRAWING NO: 532955	RESTRICTED TO: -
CUSTOMER DRAWING	SCALE: 6:1	SHEET: 1 OF 1		REV: T4		

## X-ON Electronics

Largest Supplier of Electrical and Electronic Components

*Click to view similar products for [Headers & Wire Housings](#) category:*

*Click to view products by [TE Connectivity](#) manufacturer:*

Other Similar products are found below :

[892-18-020-10-001101](#) [58102-G61-06LF](#) [582553-1](#) [0009485154](#) [009176003701906](#) [0050291907](#) [LY20-4P-DT1-P1E-BR](#) [02.125.8002.8](#)  
[609-3404](#) [61062-3](#) [61082-181009](#) [622-3653LF](#) [63453-116](#) [636-1030](#) [636-1427](#) [636-3427](#) [636-4007](#) [641938-9](#) [641991-4](#) [644827-2](#) [65817-010LF](#) [65817-015LF](#) [65863-015LF](#) [66207-023LF](#) [67095-007LF](#) [67601157](#) [68645-018](#) [68648-049](#) [70.362.1628.0](#) [70-4210](#) [70-4226B](#) [70-4853B](#) [707-5020](#) [707-5028](#) [71.350.2428.0](#) [71918-208LF](#) [71961-016LF](#) [733-134](#) [733-162](#) [754199-000](#) [760-3052](#) [787-8014-00](#) [79531-3000](#)  
[FCN-360C032-B](#) [FCN-367T-T012/H](#) [FCN-723D010/2](#) [80.063.4001.1](#) [800-90-001-10-001000](#) [800-90-010-10-002000](#) [801-43-002-10-013000](#)