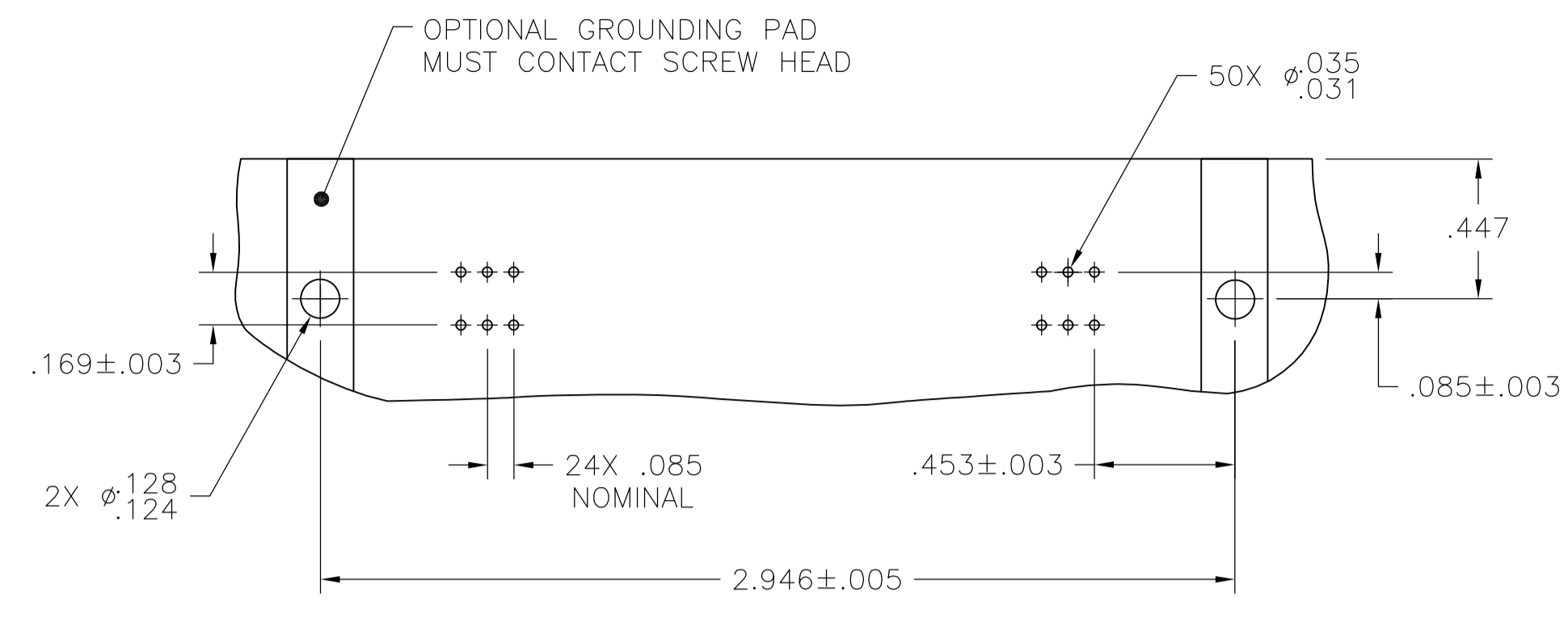
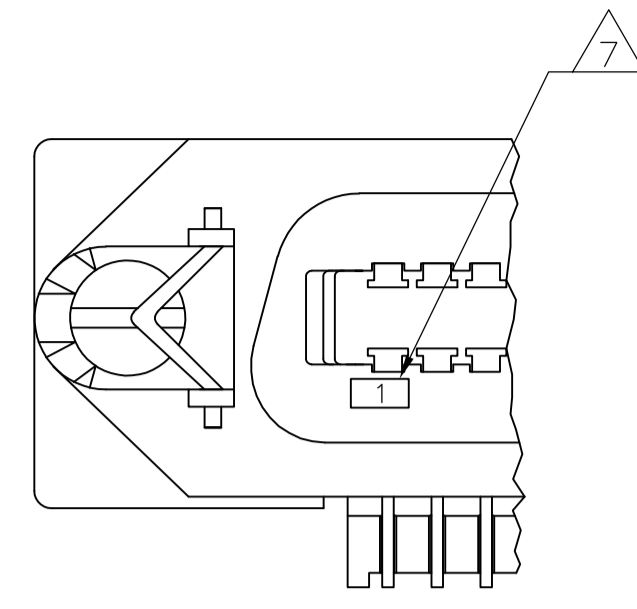


LOC		DIST		REVISIONS			
GP	00	REV	DATE	BY	CHK	APPV	
B		REVISED PER ECO-08-007327	09APR08	BM	WM		

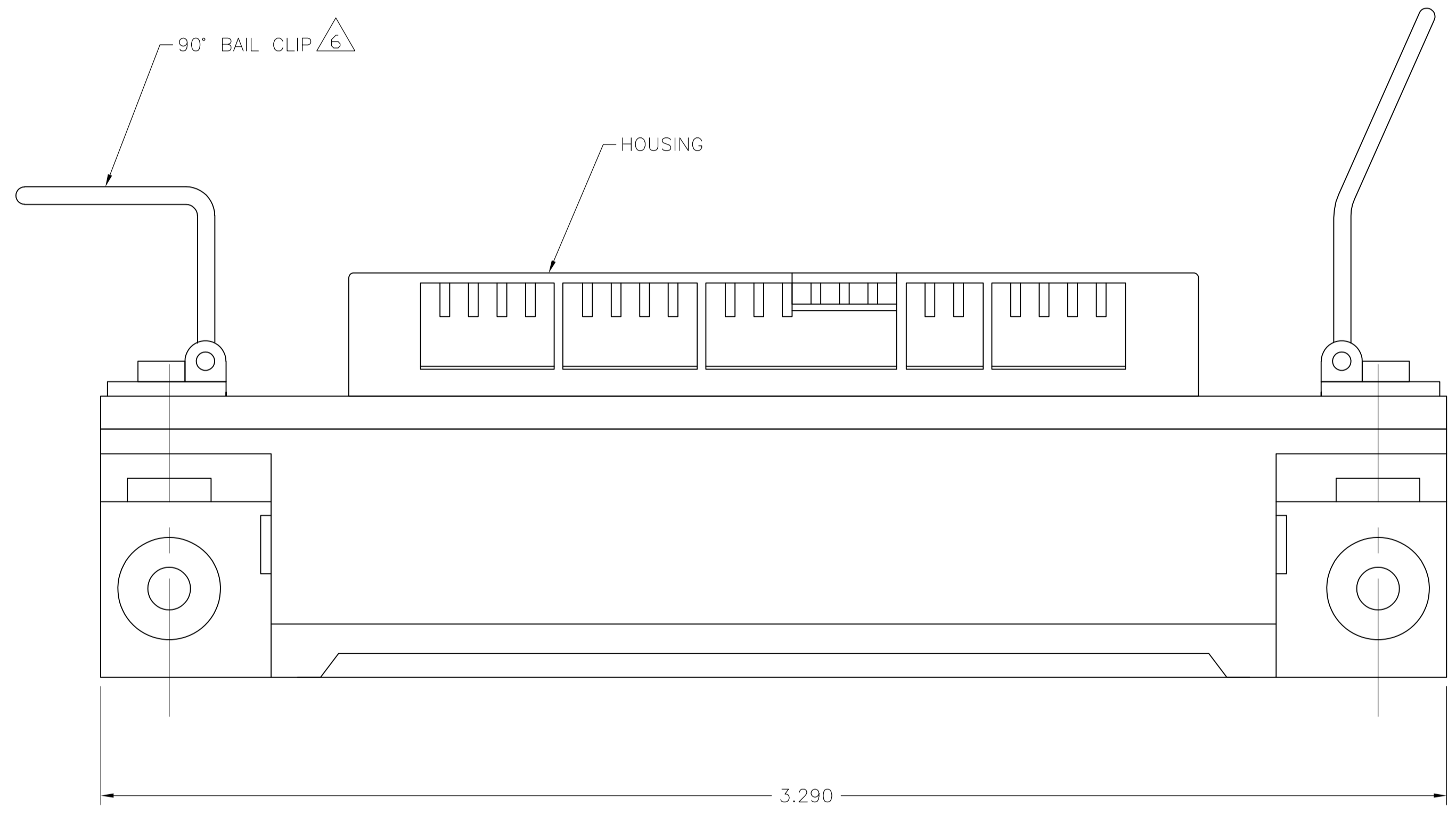


SUGGESTED PRINTED CIRCUIT BOARD MOUNTING DIMENSIONS

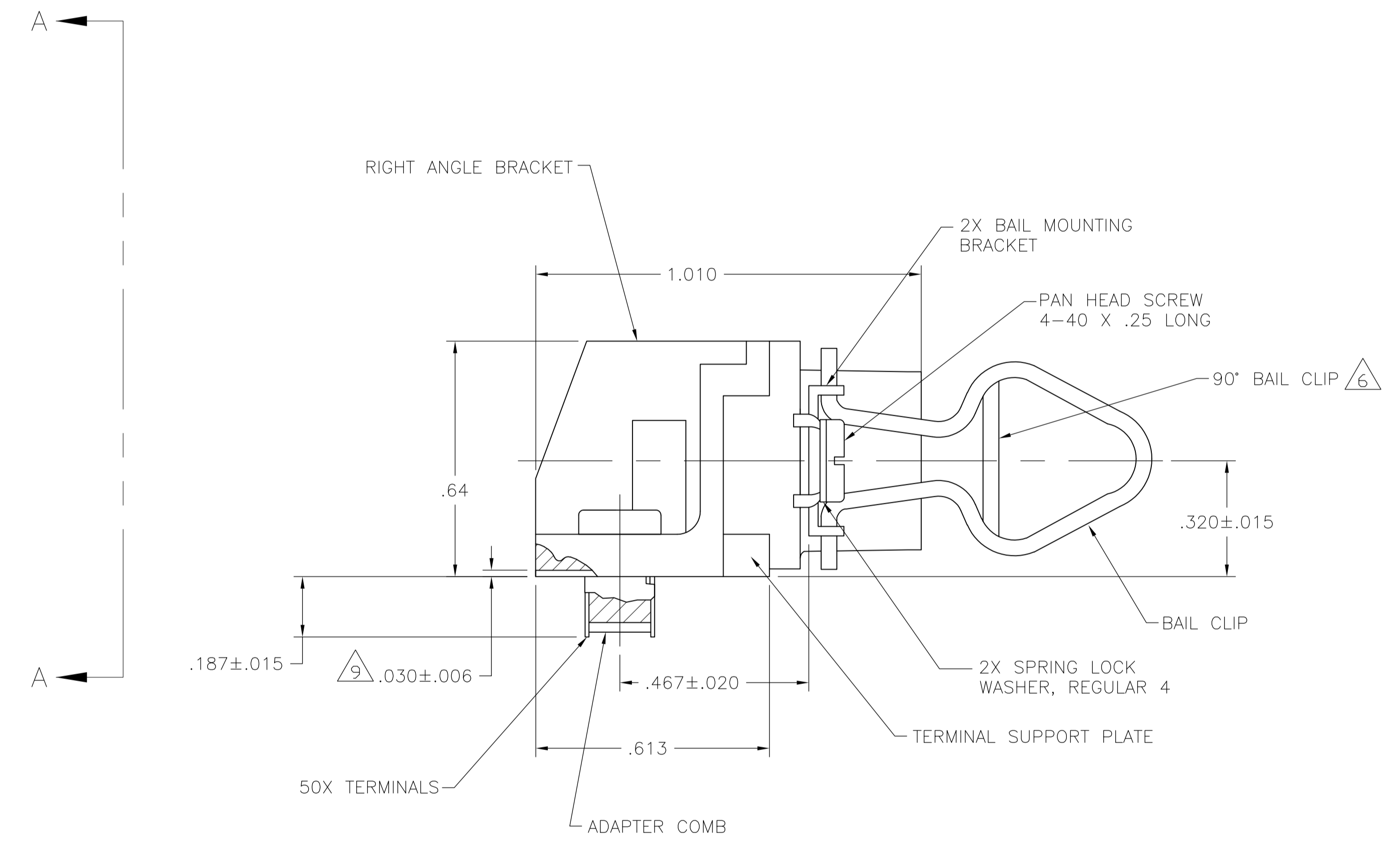


DETAIL A REVERSE ORIENTATION

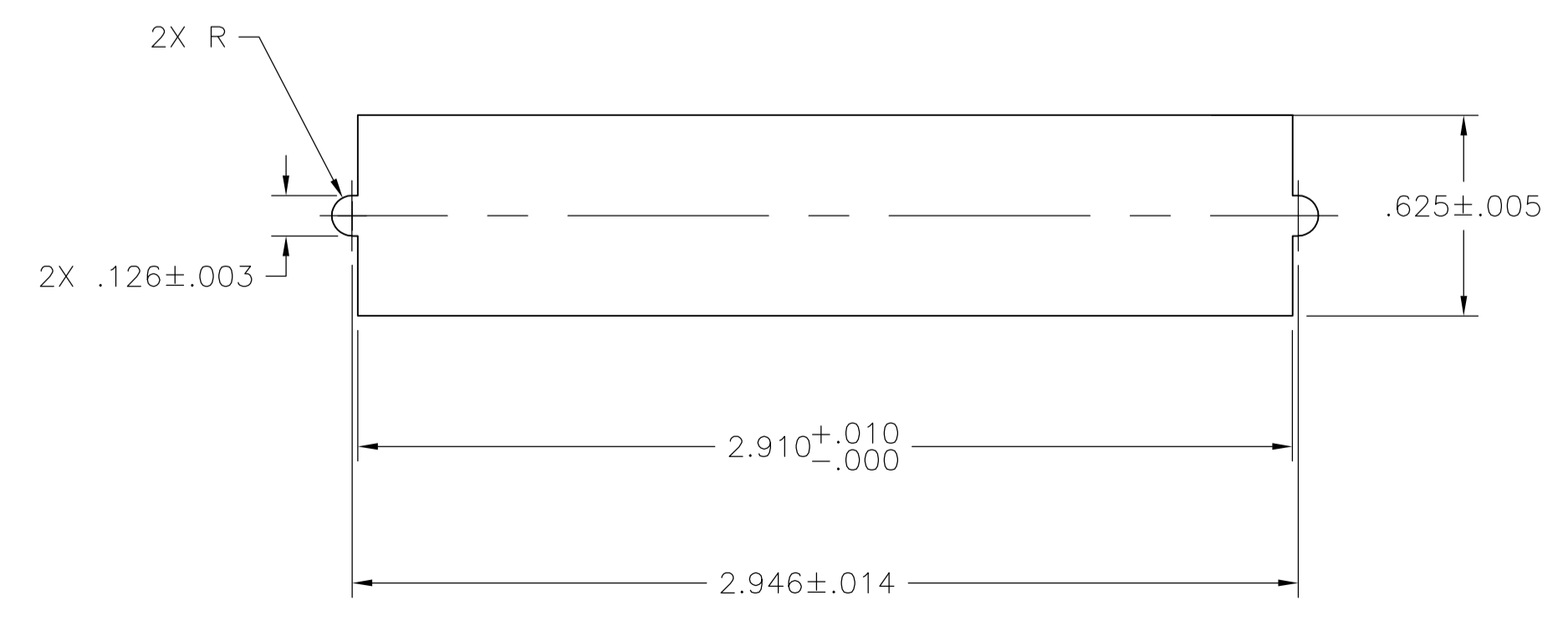
- 1 MATERIAL: HOUSING, RIGHT ANGLE BRACKET, ADAPTER COMB & TERMINAL SUPPORT PLATE - THERMOPLASTIC (BLACK).  
 TERMINALS - HIGH STRENGTH COPPER ALLOY PLATED WITH EITHER .000030 MIN GOLD PLATE OR GOLD FLASH OVER PALLADIUM NICKEL PLATE, .000030 MIN TOTAL ON MATING SURFACE, .000120 MIN TIN PLATE ON TAILS. ALL OVER .000050 MIN NICKEL UNDERPLATE OVER ENTIRE TERMINAL.  
 BAIL CLIP - PASSIVATED STAINLESS STEEL.  
 BAIL BRACKET, WASHER & SCREW - ZINC PLATED CARBON STEEL.
- 2 THE CONTACT SURFACES OF THE TERMINALS ARE COATED WITH LUBRICANT.
- 3 CENTER-TO-CENTER SPACING OF TERMINALS IS .085 NOMINAL.
- 4 ALL DIMENSIONS SHOWN ARE MAXIMUM UNLESS OTHERWISE SPECIFIED.
- 5 DETAIL A IS VIEWED FROM MATING SIDE OF RECEPTACLE ASSEMBLY.
- 6 90° BAIL CLIP LOCATED ON TERMINAL 50 END OF RECEPTACLE ASSEMBLY.
- 7 TERMINAL 1 IS LOCATED IN THIS ROW FOR REVERSE ORIENTATION.
- 8 FOR USE WITH A NO. 4 TYPE SELF TAPPING SCREW.
- 9 TERMINAL SUPPORT PLATE CLEARANCE FOR TERMINAL STRAIN RELIEF & FLUX REMOVAL.



TOP VIEW



SIDE VIEW A-A  
 REAR PANEL MOUNTING DETAIL  
 SHOWN FOR REFERENCE ONLY  
 SCALE 4:1



SUGGESTED REAR PANEL MOUNTING CUTOUT DIMENSIONS

THIS DRAWING IS A CONTROLLED DOCUMENT.		DIN E3	26AUG05	Tyco Electronics Corporation Harrisburg, PA 17105-3608	
DIMENSIONS: INCHES		CHK W	26AUG05	NAME RECEPTACLE ASSEMBLY W/ BAIL LOCK HARDWARE, 50 POSITION, RIGHT ANGLE, CHAMP-LOK	
TOLERANCES UNLESS OTHERWISE SPECIFIED:		APVD W	26AUG05	PRODUCT SPEC	
0. PLC	± .005			APPLICATION SPEC	
1. PLC	± .005			SIZE	
2. PLC	± .005			CAGE CODE	
3. PLC	± .005			DRAWING NO	
4. PLC	± .005			RESTRICTED TO	
ANGLES	± .005			WEIGHT	
FINISH				SCALE	
MATERIAL				SHEET	
				1 OF 1	
				REV	
				B	

## X-ON Electronics

Largest Supplier of Electrical and Electronic Components

*Click to view similar products for [Headers & Wire Housings](#) category:*

*Click to view products by [TE Connectivity](#) manufacturer:*

Other Similar products are found below :

[95000-104TRLF](#) [10135584-644402LF](#) [DF62W-EP2022PCA](#) [95000-106TRLF](#) [DF62W-2022SCA](#) [DF62W-EP2022PC](#) [2203348](#) [DF62W-2022SC](#) [1084018](#) [1029039](#) [1084017](#) [802-10-012-10-002000](#) [1112640](#) [1112639](#) [891-007-9SS-BST1T](#) [000-34000](#) [0008550134](#) [0009482033](#) [0009507031](#) [57102-F02-18ULF](#) [57102-S06-03LF](#) [57202-S52-04LF](#) [PCN6-15S-2.5E](#) [0039019024](#) [58102-G61-06LF](#) [582553-1](#) [0009485154](#) [0009508121](#) [009176003701906](#) [0022285053](#) [0050291907](#) [018731A](#) [LY20-4P-DT1-P1E-BR](#) [02.125.8002.8](#) [60101931](#) [60598-1 \(Cut Strip\)](#) [M1625-3R/100](#) [61062-3](#) [61082-181009](#) [CSU011177004](#) [636-1427](#) [638009-1](#) [641938-9](#) [641991-4](#) [644168-1](#) [644827-2](#) [647662-1](#) [65039-019ELF](#) [65692-001LF](#) [65781-018](#)