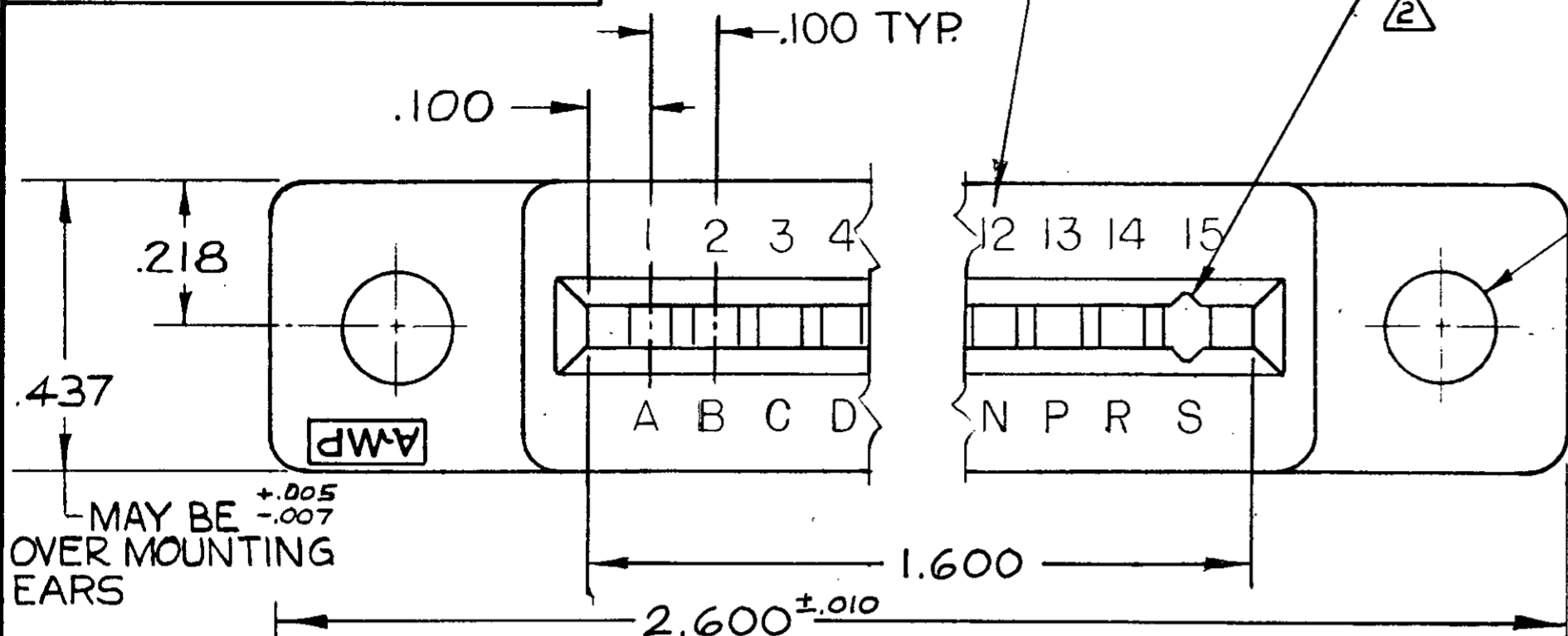


© 1963 BY AMP INCORPORATED. ALL RIGHTS RESERVED. AMP PRODUCTS COVERED BY PATENTS AND/OR PATENTS PENDING. APPROVED PER GOVT CONTRACT NO.

CAVITY IDENTIFICATION ON P/N (1)-582553-1 ONLY.

REVISIONS				
ZONE	LTR	DESCRIPTION	DATE	APPROVED
✓	S	REVISED PER 0600-3683-95 TA	10-95	WARNER
	T	ECO-08-020973 .PY	11-08	JW



"J" DIA. (2) HOLES

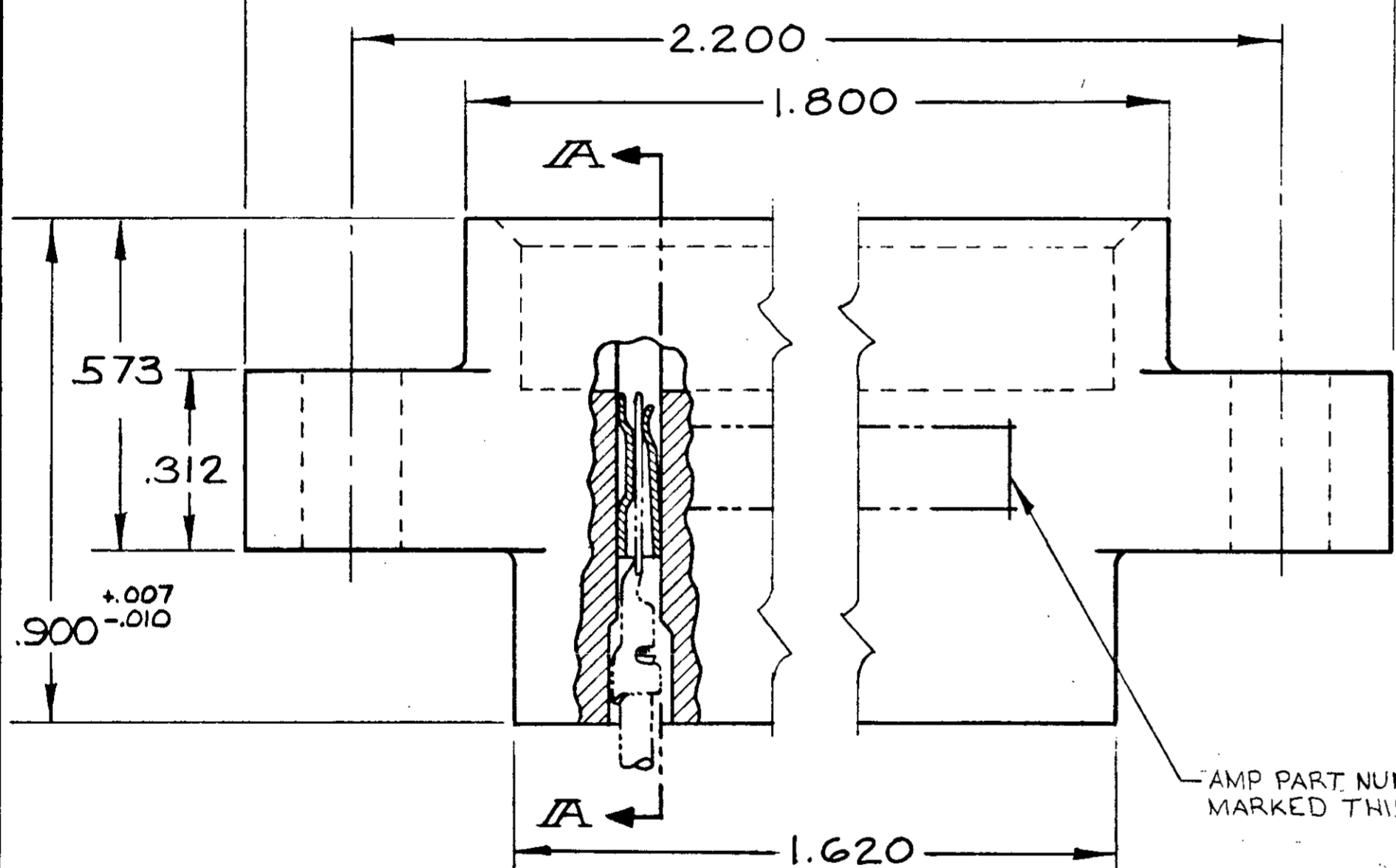
~~085-582553-2~~ 1. SAME AS -1 EXCEPT.
-2 "J" DIA. HOLES = .128

~~582553-1~~ 1. "J" DIA. HOLES = .156

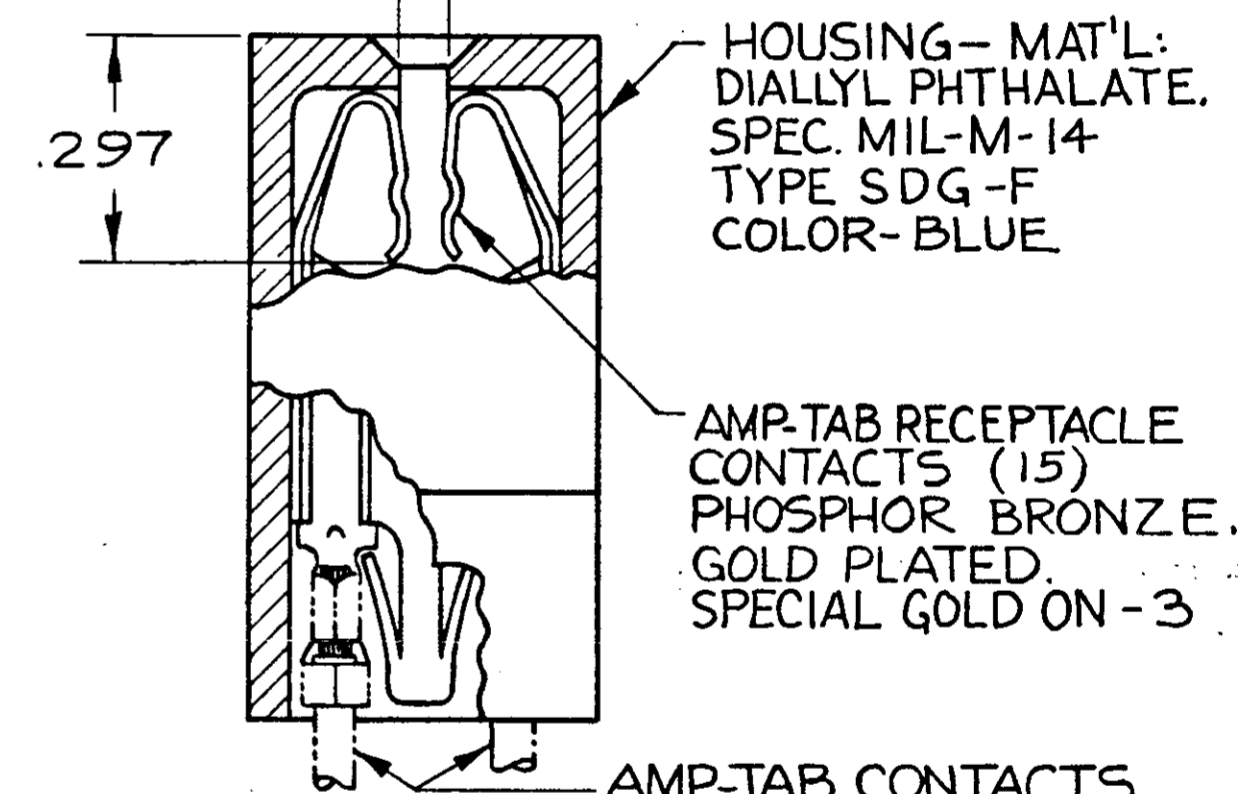
(1)-582553-1 1. SAME AS -1 EXCEPT TO HAVE CAVITY IDENTIFICATION ON TOP SURFACE OF HOUSING.

OBSOLETE

~~(1)-582553-2~~ 1. SAME AS -2 EXCEPT TO HAVE CAVITY IDENTIFICATION ON TOP SURFACE OF HOUSING

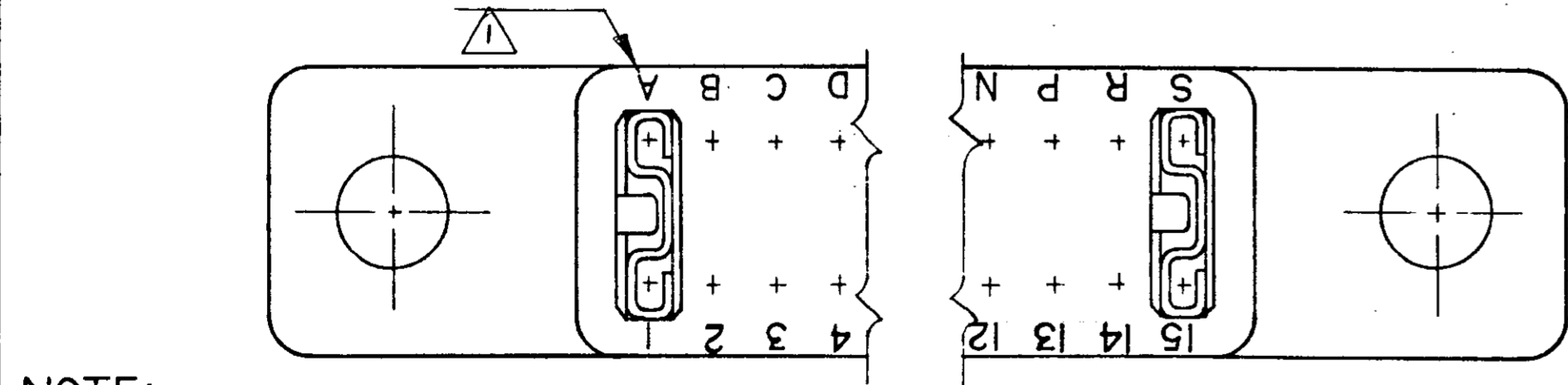


FIT FOR 1/16 P.C. BOARD (.055-.070)



AMP-TAB CONTACTS
*66143 (WIRE #26-#22)
*66144 (WIRE #20)
MUST BE ORDERED SEPARATELY

SECTION A-A



NOTE:
 1. UPPER CASE LETTERS, OMIT LETTERS G, I, O, & Q. CIRCUIT CAVITY IDENTIFICATION MARKING PER MIL-C-21097.
 2. GROOVES FOR "ON CONTACT KEYING" AMP'S OPTION DEPENDING ON METHOD OF MANUFACTURE FOR "ON CONTACT" KEYING USE KEYING PLUG P/N 583487-1. (MUST BE ORDERED SEPARATELY)

3. LASER MARKING ACCEPTABLE FOR ALL MARKING

UNLESS OTHERWISE SPECIFIED DIMENSIONS ARE IN INCHES TOLERANCES ON		CONTRACT NO.		AMP INCORPORATED HARRISBURG, PENNSYLVANIA	
FRACTIONS ± #	DECIMALS ± .005	ANGLES ± #	DR <i>J. Asish</i>	DATE 6-7-67	AMP TRADEMARK
SEE CALLOUT			CHK <i>J.S. Heide</i>	DATE 8/9/67	
MATERIAL			DSGN ENGR	DATE	15 POSITION AMP-TAB CONNECTOR .100 CENTERS DUAL
HEAT TREAT			APPD <i>J. Kaufman</i>	DATE 8/21/67	
FINISH			DSGN APPD <i>R. Sheuman</i>	DATE 8/21/67	SCALE 4 - 1
SEE CALLOUT			OTHER APPD		
SIZE C	CODE IDENT NO 00779	NUMBER 582553	REV T	WT CALC ACTUAL SHEET	

NUMBER CUS. 582553

X-ON Electronics

Largest Supplier of Electrical and Electronic Components

Click to view similar products for [Headers & Wire Housings](#) category:

Click to view products by [TE Connectivity](#) manufacturer:

Other Similar products are found below :

[95000-104TRLF](#) [10135584-644402LF](#) [DF62W-EP2022PCA](#) [95000-106TRLF](#) [DF62W-2022SCA](#) [DF62W-EP2022PC](#) [2203348](#) [DF62W-2022SC](#) [1084018](#) [1029039](#) [1084017](#) [802-10-012-10-002000](#) [1112640](#) [1112639](#) [000-34000](#) [0008550134](#) [0009482033](#) [0009507031](#) [57102-F02-18ULF](#) [57102-S06-03LF](#) [57202-S52-04LF](#) [PCN6-15S-2.5E](#) [0039019024](#) [58102-G61-06LF](#) [582553-1](#) [0009485154](#) [0009508121](#) [0022285053](#) [0050291907](#) [018731A](#) [LY20-4P-DT1-P1E-BR](#) [02.125.8002.8](#) [60101931](#) [60598-1 \(Cut Strip\)](#) [M1625-3R/100](#) [61062-3](#) [61082-181009](#) [CSU011177004](#) [636-1427](#) [638009-1](#) [641938-9](#) [641991-4](#) [644168-1](#) [644827-2](#) [647662-1](#) [65039-019ELF](#) [65692-001LF](#) [65781-018](#) [65781-047](#) [65817-002LF](#)