

DRAWING MADE IN AMERICAN PROJECTION

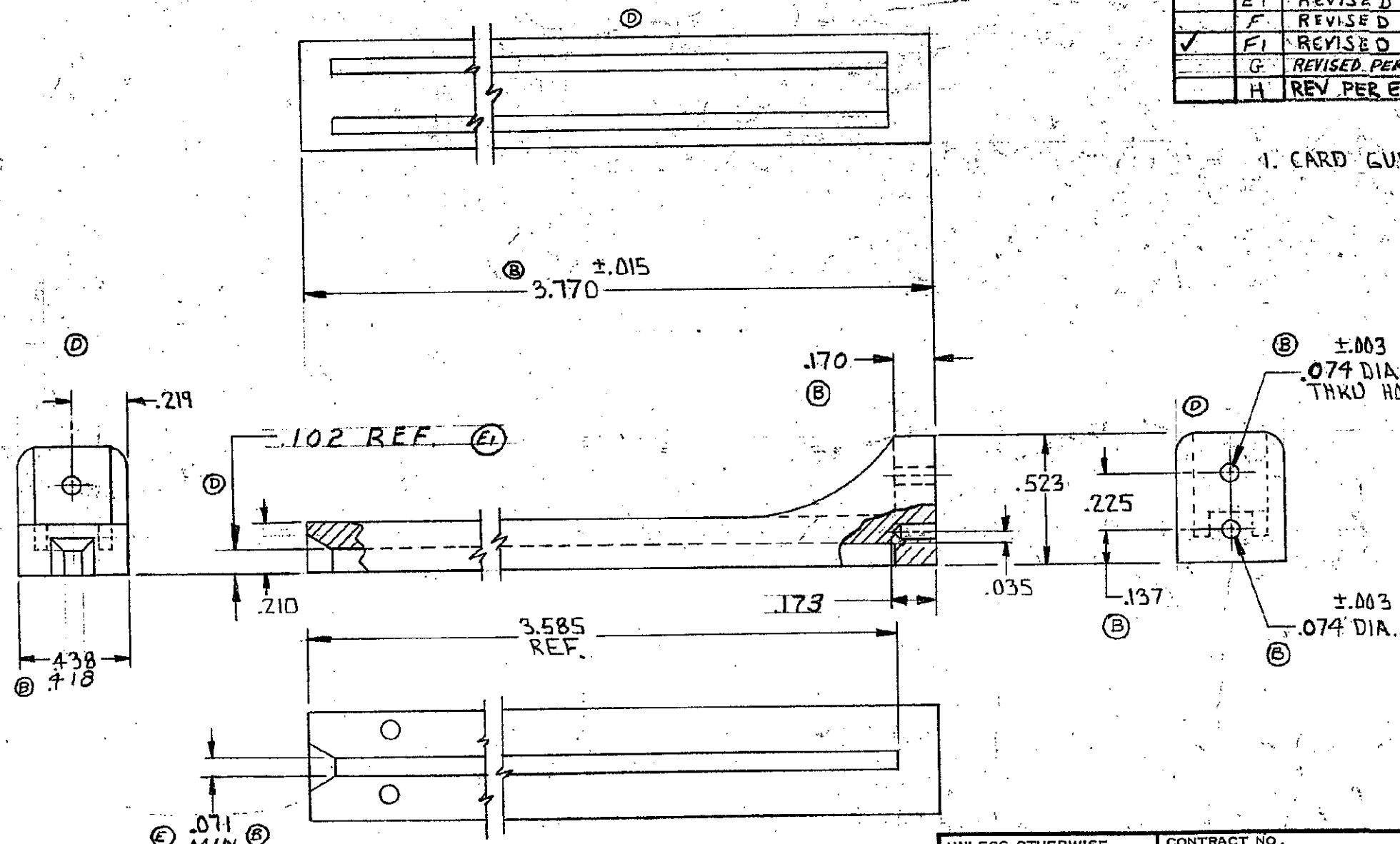
© 1970 BY AMP INCORPORATED. ALL RIGHTS RESERVED. AMP  
 Patents covered by PATENTS AND/OR PATENTS PENDING.

583671-1 I.A.S. SHOWN

Not to be reproduced nor published  
 without permission of AMP Incorporated

REVISIONS				
ZONE	LTR	DESCRIPTION	DATE	APPROVED
	D	RELEASED WAS 5172-231-2	11-24-70	DH
	A	REVISED 2849	M.S. 7-14-71	DH
	B	REVISED 3000	M.S. 5-6-71	DH
	C	REVISED MATL. 3030	M.S. 5-21-71	DH
	D	REVISED 3257	M.S. 11-12-71	DH
	E	REVISED 3325	M.S. 1-17-72	DH
	E1	REVISED 4375	M.S. 2-19-75	DR
	F	REVISED 4690	M.S. 2-11-76	DR
✓	F1	REVISED MATL. 5328	M.S. 11-10-77	
	G	REVISED PER 0010-0636-95	6-30-95	RB/J
	H	REV PER EC 0320-209-97	7-1-97	NS

D  
S  
C  
B  
A



1. CARD GUIDE ACCEPTS #2 SELF TAPPING SCREW

▲ GLASS FILLED NYLON OR GLASS FILLED  
 POLYESTER, COLOR: BLACK OR BROWN

UNLESS OTHERWISE SPECIFIED DIMENSIONS ARE IN INCHES TOLERANCES ON: DECIMALS ±.005 ANGLES ±.1	CONTRACT NO.		<b>AMP</b> AMP INCORPORATED HARRISBURG, PENNSYLVANIA	
	ARR. <i>H. Waratyle</i> 11/24/70			
	CHK. <i>S.S. Helde</i> 11/30/70		NAME CARD GUIDE	
	MATERIAL		SIZE B	
ARR. <i>S. Hardeman</i> 12-1-70		CODE IDENT NO. 00779		
CHK. <i>R. Shawman</i> 12-2-70		NUMBER 583671		
DSGN APPD		SCALE		
OTHER APPD		SHEET 1 OF 1		

LOC FT  
22

CUSTOMER DRAWING

## X-ON Electronics

Largest Supplier of Electrical and Electronic Components

*Click to view similar products for [Standard Card Edge Connectors](#) category:*

*Click to view products by [TE Connectivity](#) manufacturer:*

Other Similar products are found below :

[CR7E-30DB-3.96E\(72\)](#) [6364499-1](#) [6565204-6](#) [PKC-156](#) [1437274-4](#) [147889-1](#) [1489165-4](#) [EBT15622B2X](#) [1-582587-1](#) [284-0102-12100](#)  
[286-0052-12101A](#) [306022901000000](#) [307-012-502-202](#) [307-056-520-300](#) [2129318-1](#) [245-062-520-350](#) [287-0032-12101](#) [306-028-525-102](#)  
[307-072-526-202](#) [345-060-559-303](#) [392-008-559-201](#) [534671-1](#) [341-240-317](#) [345-044-500-300](#) [346-240-318](#) [395-100-524-300](#) [09-07-2032](#)  
[10035388-802LF](#) [10115859-011LF](#) [10122859-009LF](#) [10127905-B04B24BLF](#) [530555-1](#) [5-678046-1](#) [73726-0005](#) [66308-1](#) [1-1437275-6](#)  
[PEC-07-02-T-S-A](#) [346-014-520-801](#) [307-048-502-202](#) [CE100F22-9-C](#) [CE100F26-7-C](#) [CE100F28-3-D](#) [CE156F18-9-C](#) [CE156F22-5-D](#)  
[CE156F22-9-C](#) [CT100F22-2-D](#) [CT100F22-3-D](#) [CT100F24-2-D](#) [CT100F24-3-D](#) [CT100F24-6-C](#)