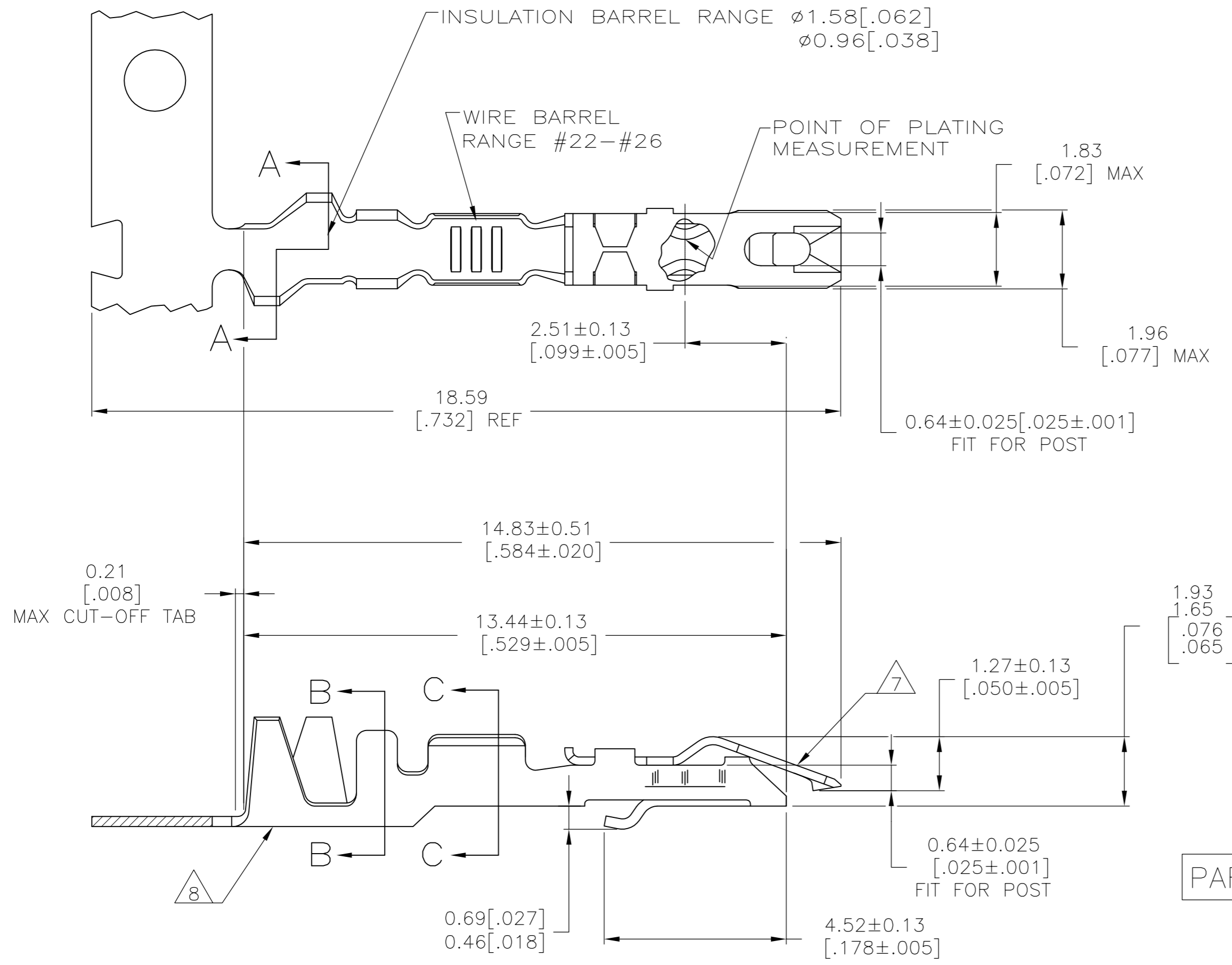


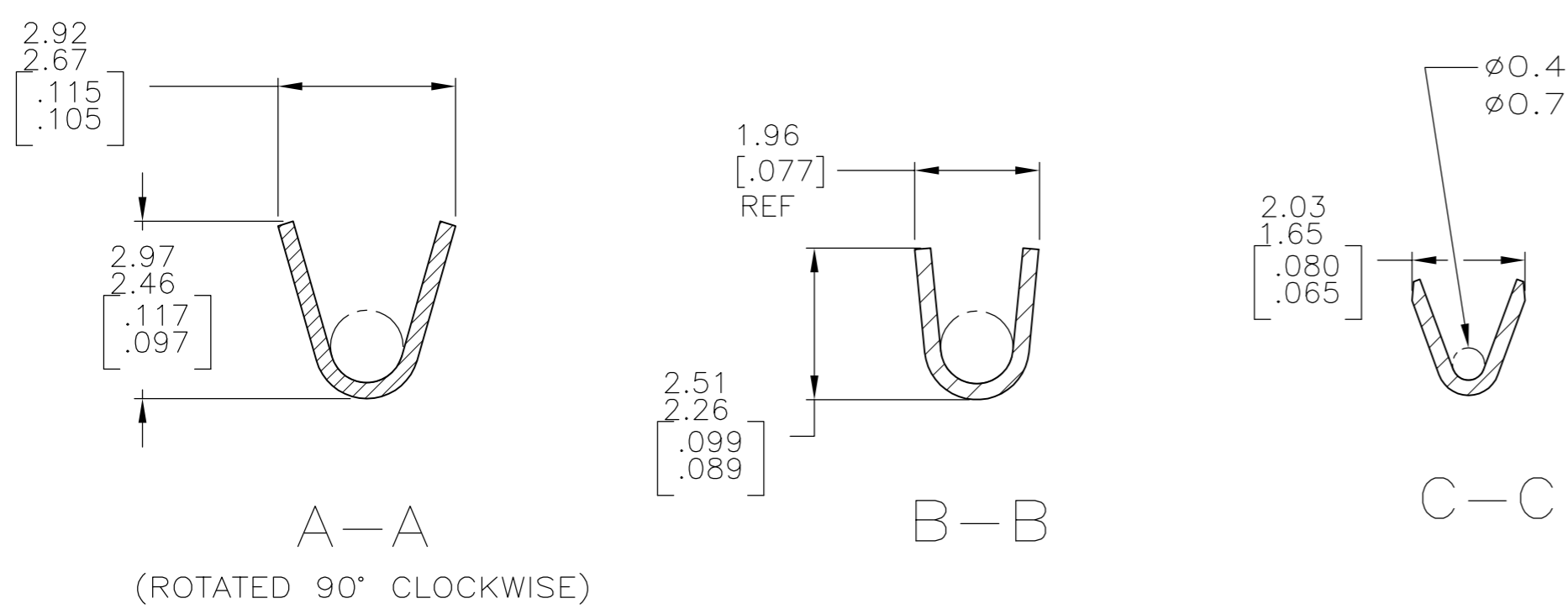
THIS DRAWING IS UNPUBLISHED. RELEASED FOR PUBLICATION
 © COPYRIGHT - By - ALL RIGHTS RESERVED.

| REVISIONS | | | | | |
|-----------|-----|---------------------------|-----------|-----|------|
| P | LTR | DESCRIPTION | DATE | DWN | APVD |
| S1 | | REVISED PER ECO-11-004820 | 11MAR11 | RK | HMR |
| S2 | | REVISED PER ECO-16-006924 | 28APR2017 | RS | JO |



- 1 REELED FOR MINI-APPLICATOR.
- 2 REELED FOR STRIPPER CRIMPER.
- 3 PLATED WITH 0.00076 [.000030] GOLD IN CONTACT AREA, GOLD FLASH ON REMAINDER, OVER 0.00127 [.000050] NICKEL.
- 4 PLATED WITH 0.00127 [.000050] GOLD IN CONTACT AREA, GOLD FLASH ON REMAINDER, OVER 0.00127 [.000050] NICKEL.
- 5 PLATED WITH 0.00254 [.000100] TIN-LEAD OVER 0.00127 [.000050] NICKEL - ENTIRE CONTACT.
- 6 PLATED WITH 0.00127 [.000050] GOLD OVER 0.00127 [.000050] NICKEL - ENTIRE CONTACT.
- 7 SPRING MATERIAL: STAINLESS STEEL.
- 8 BODY MATERIAL: PHOS BRONZE - FINISH: SEE TABLE.
- 9 PLATED WITH .000100 TIN OVER .000050 NICKEL OVER ENTIRE CONTACT.

PART NUMBER 1-87124-2 SUPERCEDED BY 5-87124-2



OBsolete
OBsolete

| 1 | 3 | 9-87165-1 | 9-87124-1 |
|---------|-------------|-----------------------|---------------------|
| 1 | 9 | 5-87165-2 | 5-87124-2 |
| 1 | 9 | - | 1-87124-2 |
| 2 | 3 | 87165-1 | 1-87124-1 |
| - | 6 | 87165-4 | 87124-4 |
| 1 | 4 | 87165-3 | 87124-3 |
| 1 | 5 | 87165-2 | 87124-2 |
| 1 | 3 | 87165-1 | 87124-1 |
| REMARKS | BODY FINISH | PART NO (LOOSE PIECE) | PART NUMBER (STRIP) |

| DIMENSIONS: | | TOLERANCES UNLESS OTHERWISE SPECIFIED: | | DWN | | E. BRANDBERG | | 23SEP94 | |
|-------------|--|--|--|------------------|--|--------------|--|------------------|--|
| mm [INCHES] | | 0 PLC ± - | | CHK | | S. SHUEY | | 23SEP94 | |
| | | 1 PLC ± - | | APVD | | D. DUPLER | | 23SEP94 | |
| | | 2 PLC ± - | | PRODUCT SPEC | | | | | |
| | | 3 PLC ± - | | APPLICATION SPEC | | | | | |
| | | 4 PLC ± - | | | | | | | |
| | | ANGLES ± - | | WEIGHT | | - | | A2 00779 C=87124 | |
| MATERIAL | | FINISH | | CUSTOMER DRAWING | | SCALE | | 10:1 | |
| SEE CALLOUT | | SEE TABLE | | | | SHEET | | 1 of 1 | |
| | | | | | | REV | | S2 | |

X-ON Electronics

Largest Supplier of Electrical and Electronic Components

Click to view similar products for [Headers & Wire Housings](#) category:

Click to view products by [TE Connectivity](#) manufacturer:

Other Similar products are found below :

[892-18-020-10-001101](#) [58102-G61-06LF](#) [582553-1](#) [0009485154](#) [009176003701906](#) [0050291907](#) [LY20-4P-DT1-P1E-BR](#) [02.125.8002.8](#)
[609-3404](#) [61062-3](#) [61082-181009](#) [622-3653LF](#) [63453-116](#) [636-1030](#) [636-1427](#) [636-3427](#) [636-4007](#) [641938-9](#) [641991-4](#) [644827-2](#) [65817-010LF](#) [65817-015LF](#) [65863-015LF](#) [66207-023LF](#) [67095-007LF](#) [67601157](#) [68645-018](#) [68648-049](#) [70.362.1628.0](#) [70-4210](#) [70-4226B](#) [70-4853B](#) [707-5020](#) [707-5028](#) [71.350.2428.0](#) [71918-208LF](#) [71961-016LF](#) [733-134](#) [733-162](#) [754199-000](#) [760-3052](#) [787-8014-00](#) [79531-3000](#)
[FCN-360C032-B](#) [FCN-367T-T012/H](#) [FCN-723D010/2](#) [80.063.4001.1](#) [800-90-001-10-001000](#) [800-90-010-10-002000](#) [801-43-002-10-013000](#)