

**SAFETY ORGANIZATION(S):**

THIS FILTER HAS BEEN FORMALLY RECOGNIZED, CERTIFIED OR APPROVED BY THE LISTED AGENCY. THEREFORE, ALL TEST/REQUIREMENTS SPECIFIED IN THE LATEST REVISION OF THE FOLLOWING AGENCY STANDARDS HAVE BEEN MET:

UL RECOGNIZED                   UL 1283  
 CSA CERTIFIED                CSA 22.2, NO.0,0.4,8  
 VDE APPROVED                 VDE 565-3, 625

**OPERATING SPECIFICATIONS:**  
 LINE VOLTAGE/CURRENT:       5 AMP., 120 VAC  
                                       4 AMP., 250 VAC  
                                       4 AMP./40°C, 250 VAC  
 LINE FREQUENCY:             50-60Hz  
 MAX. LEAKAGE CURRENT, EACH  
 LINE TO GROUND             .25mA AT 120V 60Hz  
                                       .42mA AT 250V 50Hz  
 OPERATING AMBIENT TEMP. RANGE:   -10°C TO +40°C @ RATED CURRENT, I  
 IN AN AMBIENT, T<sub>a</sub>, HIGHER THAN 40°C, THE MAXIMUM OPERATING  
 CURRENT, I<sub>0</sub>, IS AS FOLLOWS:

$$I_0 = I_r \sqrt{\frac{85 - T_a}{45}}$$

**RELIABILITY SPECIFICATIONS:**

STORAGE TEMPERATURE:       -40°C TO +85°C  
 HUMIDITY:                     21 DAYS @ 40°C 95% RH  
 CURRENT OVERLOAD TEST:      6 TIMES RATED CURRENT  
                                       FOR 8 SECONDS

**TEST SPECIFICATIONS:**

INDUCTANCE:                   .93mH NOMINAL  
 CAPACITANCE:  
 (MEASURED AT 1 KHz, 0.25 VAC MAX., 25°C ±1°C)  
 LINE TO LINE:                 .01µF ±20%  
 LINE TO GROUND:             .005µF ±20%  
 DISCHARGE RESISTOR:        1.5 MΩ  
 LINE/GROUND AND LINE/LINE   6000 MΩ (MIN)  
 INSULATION RESISTANCE      AT 100 VDC  
 (W/O DISCHARGE RESISTOR)   20°C AND 50% RH

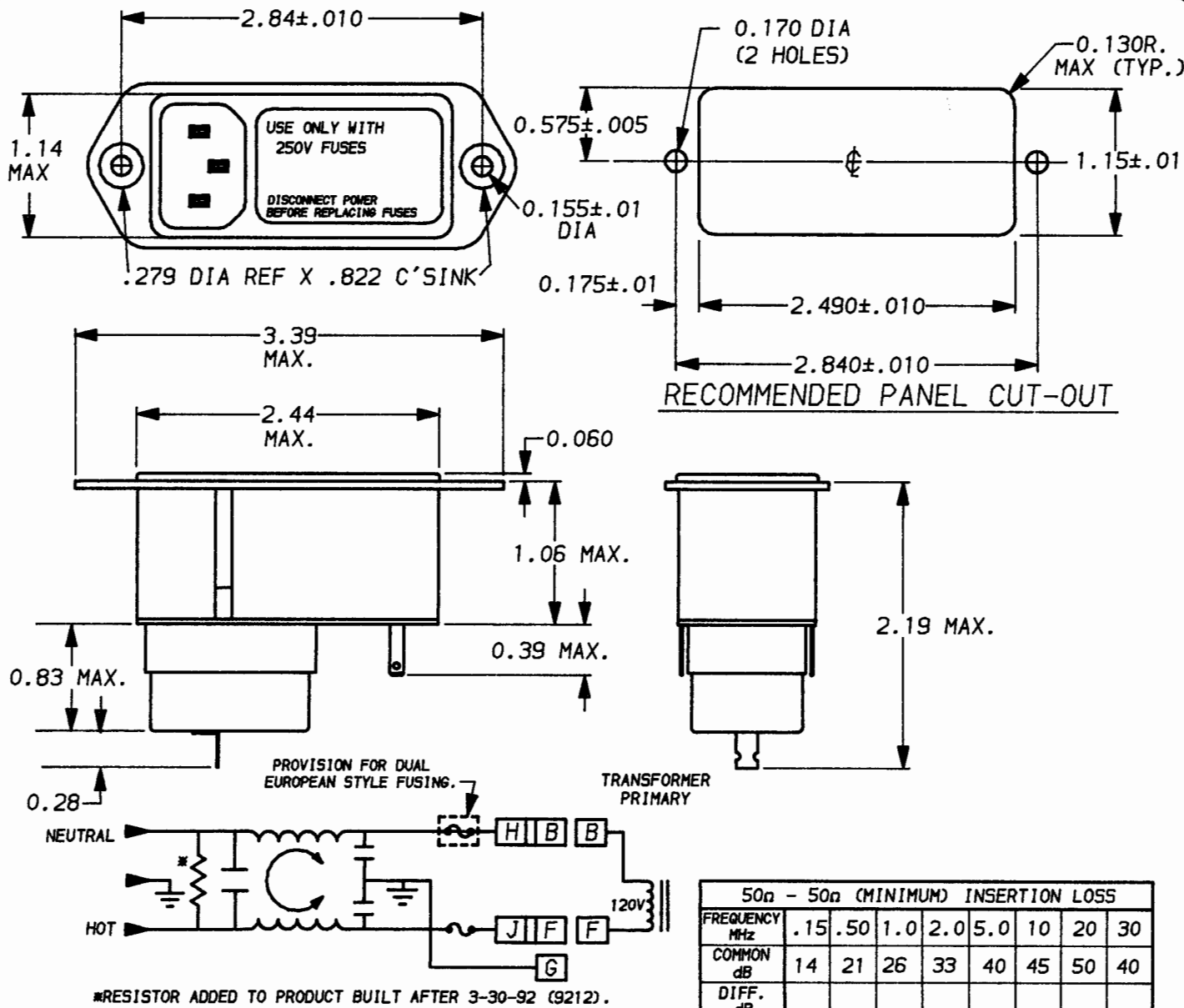
**RECOMMENDED RECEIVING INSPECTION HIPOT:**


LINES TO GROUND:            1500 VAC FOR 1 MINUTE  
 LINE TO LINE:                1450 VDC FOR 1 MINUTE

**FILTER APPROVAL:**

THE BEST WAY TO SELECT AND QUALIFY A FILTER IS FOR YOUR ENGINEERING TO TEST THE UNIT IN YOUR EQUIPMENT.

SEFM1



	UNLESS OTHERWISE SPECIFIED, TOLERANCE TO BE ±.025	 LIBERTYVILLE, IL 60048 <b>POWER LINE FILTER</b>
	MATERIAL & FINISH: AS SUPPLIED	
	This document is proprietary to CORCOM INC. and is not to be reproduced nor used for manufacturing purposes except on CORCOM'S prior written consent.	
	DATE: 4-18-94	CATALOG NO.
	APPROV.	REV. <b>SEFM1.05</b>
		CAD NO. <b>SEFM1.05</b>

## X-ON Electronics

Largest Supplier of Electrical and Electronic Components

*Click to view similar products for [AC Power Entry Modules](#) category:*

*Click to view products by [TE Connectivity](#) manufacturer:*

Other Similar products are found below :

[0098.0050](#) [6167.0002](#) [6609100-2](#) [7-6609955-2](#) [FKI2-50-6/M5](#) [FN361-6-06](#) [FN389-4-22](#) [FN9226B-6-02](#) [FN9233S1-10-06](#) [FN9233S1-8-06](#)  
[FN9233S1B-8-06](#) [FN9233S1R-1-06](#) [FN9233S1R-12-06](#) [FN9233SB-1-06](#) [FN9233SB-12-06](#) [FN9233SB-8-06](#) [FN9233SR-10-06](#) [FN9244B-15-06HI](#) [FN9244EB-3-06](#) [FN9244EB-8-06](#) [FN9244ER-15-06](#) [FN9244ER-8-06](#) [FN9244ES1-8-06](#) [FN9244ESB-8-06](#) [FN9244R-12-06](#)  
[FN9244S1-12-06](#) [FN9244S1R-3-06](#) [FN9244SB-8-06](#) [FN9244SR-6-06](#) [FN9244U-3-06](#) [FN9244U-8-06](#) [8-6609940-2](#) [PE00SSSXB](#) [Fuse-H-EUR-1](#) [Fuse-H-USA-1](#) [PM00XD000](#) [A-0701-HT-H](#) [15EJMS8](#) [1-6609941-2](#) [200JM6-2](#) [CA121003-6](#) [SK-1015\(F1-5\)](#) [161-R3015-E](#) [1-6609153-2](#) [FN323-1-05](#) [FN9233B-8-06](#) [FN9233EB-1-06](#) [FN9233ES1R-10-06](#) [FN9233R-12-06](#) [FN9233S-10-06](#)