



Kontaktbuchse 1 mm geschlitzt

Einsatzbereich: - 623 Stecker, 10-polig
- 923 Stecker, 8 und 9-polig
- 723 htec
- 740 htec

TE Teile Nr.: 60.0216-011-000
IC Ref. Nr.: 60.216.11

Elektrische Werte

Bemessungsstrom bis 14 A*
Durchgangswiderstand < 5 mOhm

Werkstoff

Kontakt Messing, vergoldet

Anschluss

Anschlussart/ -bereich Crimp/ 0,5 - 1,5 mm²
max. Litzenaußendurchmesser ø2,45 mm
Abisolierlänge 5 mm
Crimpeinstellungen sind individuell zu wählen

Mechanische Werte

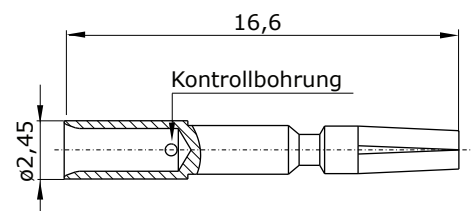
Steckzyklen 500

Werkzeuge (nicht im Lieferumfang enthalten)

digitale Crimpzange TE Teile Nr.: C0-0236-000-000
IC Ref. Nr.: C0.236.00

analoge Crimpzange TE Teile Nr.: C0-0201-000-000
IC Ref. Nr.: C0.201.00

(Positioniereinsatz für 1 mm Kontakte TE Teile Nr.: C0-0252-000-000
IC Ref. Nr.: C0.252.00)



Hauptabmessungen

Kontaktbuchse





Contact Socket 1 mm slotted

application area: - 623 plug, 10-pin
- 923 plug, 8 and 9-pin
- 723 htec
- 740 htec

TE part number: 60-0216-011-000
IC reference number: 60.216.11

Electrical Data

nominal current max 14 A*
contact resistance < 5 mOhm

Material

contact brass, gold plated

Termination

cross-section crimp/ 0.5 - 1.5 mm²
max. outer wire diameter ø2.45 mm
stripping length 5 mm
crimp settings select individually

Mechanical Data

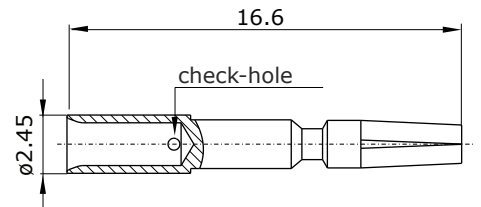
mating cycles 500

Tools (not included in delivery)

digitale crimping tool TE part. no.: C0-0236-000-000
IC ref. no.: C0.236.00

(analog crimping tool TE part. no.: C0-0201-000-000
IC ref. no.: C0.201.00

positioning insert for 1 mm contacts TE part. no.: C0-0252-000-000
IC ref. no.: C0.252.00)



Main Dimensions
contact socket

Y6-C144-000-0EN issued: 21.05.2010/Sa; modified: 17.10.2018/KC

© 2018 TE Connectivity

TE Connectivity, TE connectivity (logo), intercontec (logo) and speedtec are trademarks.

While TE Connectivity (TE) has made every reasonable effort to ensure the accuracy of the information in this presentation, TE does not guarantee that it is error-free, nor does TE make any other representation, warranty or guarantee that the information is accurate, correct, reliable or current. TE reserves the right to make any adjustments to the information contained herein at any time without notice. TE expressly disclaims all implied warranties regarding the information contained herein, including, but not limited to, any implied warranties of merchantability or fitness for a particular purpose. The dimensions in this article are for reference purposes only and are subject to change without notice. Specifications are subject to change without notice. Consult TE for the latest dimensions and design specifications.

TE Connectivity Industrial GmbH
Bernrieder Straße 15
94559 Niederwinkling, Germany
+49 9962 2002 - 0
intercontec@te.com
www.intercontec.biz



* for max. wire cross-section

X-ON Electronics

Largest Supplier of Electrical and Electronic Components

Click to view similar products for [Circular Metric Connectors](#) category:

Click to view products by [TE CONNECTIVITY](#) manufacturer:

Other Similar products are found below :

[600X518037X](#) [6STD15PCR99B70A](#) [8R4000A16M020](#) [8R5000A16M005](#) [1200910002](#) [1203580030](#) [1200910008](#) [1200910011](#) [1300140094](#)
[130203-0054](#) [1300140026](#) [1300150099](#) [RF-12S1N8A90DU](#) [1-3637-600-5205](#) [1612618](#) [21036836414](#) [8R4006A16M010](#) [8R5006A18A120](#)
[1604232](#) [1R3006A20M005](#) [RF-12P1N8A80DU](#) [RF-12P1N8A90DU](#) [41-40011](#) [42-01015](#) [4-22279-4](#) [4-22281-1](#) [4-22284-9](#) [43-00113](#) [43-](#)
[01088](#) [43-01203](#) [41-40013](#) [42-00008](#) [43-00343](#) [43-01032](#) [43-01162](#) [43-10000](#) [600X518050X](#) [SACC-DSI-FS-5P-PG9-L180 SC](#)
[8R5006A16M020](#) [8R5006A16M005](#) [8R4000A16M010](#) [6-22279-3](#) [1605332](#) [N03FA03144](#) [1300140077](#) [43-01338](#) [XS2RD4265](#) [RSC 4/9](#)
[XS2R-D426-1](#) [XS8A-0441](#)