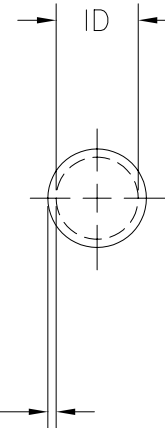


3.18 [.125] MINIMUM EXPANDED
1.57 [.062] MAXIMUM RECOVERED



0.51 [.020] NOMINAL WALL
THICKNESS FULLY RECOVERED

REVISIONS		
LTR	DESCRIPTION	DATE
S	REVISED PER DCR NO R060224	10/13/2006

1. TUBING VFP21 MARKED AS SHOWN IN WHITE CHARACTERS ON SURFACE INDICATED

2. TUBING VFP21 IS UL RECOGNIZED, IS RATED 125°C [257°F], 600 V AND MEETS VW-1 FLAME TEST.

3. TUBING VFP21 IS CSA CERTIFIED AND MEETS VW-1 FLAME TEST.

4. TUBING FP21 IS UNMARKED AND MEETS REQUIREMENTS OF AMS-DTL-23053/5-104-0

4	4	152.4 m [500 ft] MINIMUM	2-603324-2
		50.8 ± 3.05 [2.00 ± .12]	2-603324-0
		1.22 m [4 ft] MINIMUM	1-603324-1
1	2 3	152.4 m [500 ft] MINIMUM	603324-5
		304.8 ± 6.35 [12.00 ± .25]	603324-4
		304.8 m [1000 ft] MINIMUM	603324-2
		1.22 m [4 ft] MINIMUM	603324-1
MARKING	NOTES	LENGTH L	PART NUMBER

5. WEIGHT PER LINEAR FOOT/304.8 mm:
1.09 g/.0024 lbs.

6. MATERIAL: BLACK POLYOLEFIN

SPECIFICATION CONTROL DRAWING

UNLESS OTHERWISE SPECIFIED DIMENSIONS ARE IN mm. INCH DIMENSIONS ARE IN BRACKETS.	DRAWN UNGUYEN	DATE 10/13/2006	Tyco Electronics Corporation 300 Constitution Drive Menlo Park, CA, USA 94025
	RPN	CAD NAME R060224	
DECIMALS .XX ± .01 [.0004 in] .X ± .1 [.004 in]	THIRD ANGLE PROJECTION		SIZE B
ANGLES .X ± 0.5 DEG	CODE IDENT. NO. 06090		DWG. NO. 603324
DO NOT SCALE THIS DRAWING			SHEET 1 OF 1

X-ON Electronics

Largest Supplier of Electrical and Electronic Components

Click to view similar products for [Heat Shrink Tubing and Sleeves](#) category:

Click to view products by [TE Connectivity](#) manufacturer:

Other Similar products are found below :

[5685710001](#) [CR9960-000](#) [5734012004](#) [607381P039](#) [611112-000](#) [6284592002](#) [CX4711-000](#) [CZ1420-000](#) [D-306-38](#) [770-006S302](#) [770-010Y106W1](#) [770-020S705](#) [MFP-3/64"-Clear](#) [790-3012](#) [MHHT-4-15K2-G-104](#) [8003012003](#) [MIL-LT-1-1/2-4-SP](#) [MIL-LT-1-1/2-9-STK](#) [MIL-LT-1/2-2-STK](#) [MIL-LT-3-0-SP](#) [MIL-LT-3/32-0-SP](#) [MIL-LT-3/32-6-SP](#) [MIL-LT-3/4-4-STK](#) [MIL-LT-3/4-6-SP](#) [839602-000](#) [8423-6](#) [FP301-116-48"-Clear](#) [FP301-12-6"-Clear](#) [FP301-1/4-48"-White-Hdr](#) [FP301-18-48"-Black-Hdr](#) [FP301-1/8-6"-Black](#) [FP301-18-6"-Black-Bulk](#) [FP301-316-48"-Blue-Hdr](#) [912229N002](#) [R280637030](#) [HDCW-5515-1000](#) [HDT-0300-48A-BLACK](#) [HDT-0400-48A-Black](#) [HDT-0800-48A-RED](#) [HDT1100-48A-BLK](#) [HDT1500-48A-BLK](#) [HDT-2000-48A-Black](#) [RHW-70/20-1200/ADH-0](#) [DWP-125-0.450-4-55MM-CS879](#) [156082-000](#) [MT5500-3/8-X-SP](#) [MT-FEP-045-032-008-X-60IN](#) [EPS200-1/4-48"-Black](#) [EPS200-1-48"-Black](#) [EPS200-3/16-48"-Black](#)