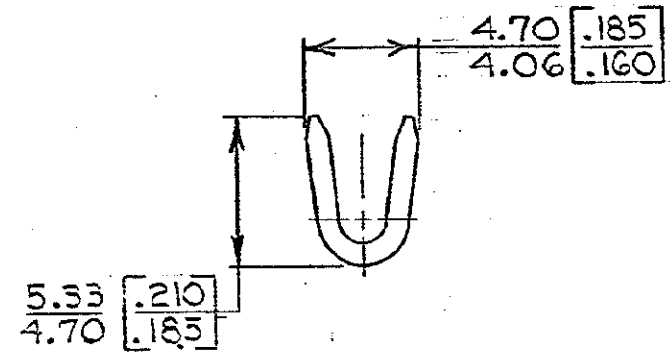
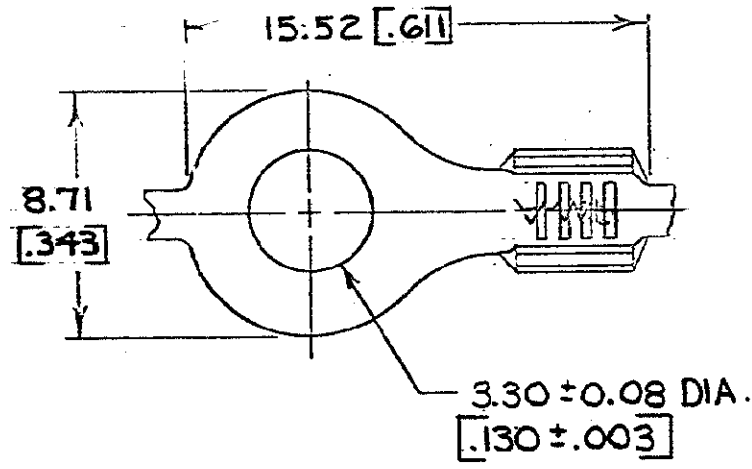
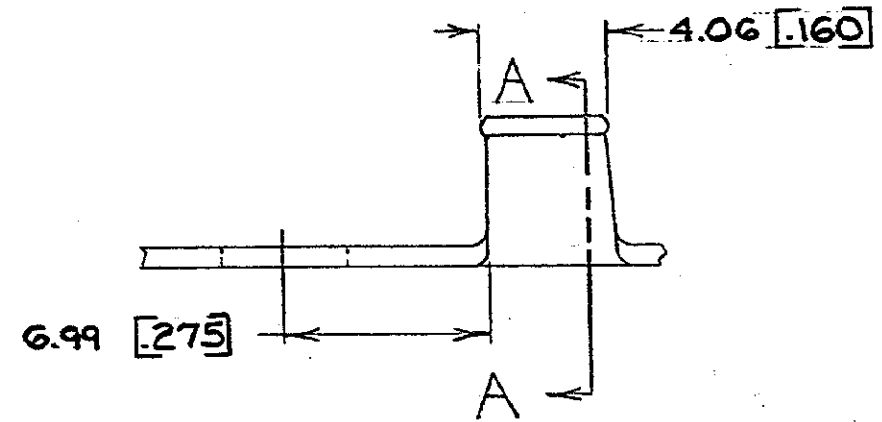


© COPYRIGHT 1965 BY AMP INCORPORATED, HARRISBURG, PA.
 ALL INTERNATIONAL RIGHTS RESERVED. AMP INCORPORATED PRODUCTS
 COVERED BY U. S. AND FOREIGN PATENTS AND/OR PATENTS PENDING.

		REVISIONS			LOC	DIST
P	F	ZONE	LTR	DESCRIPTION	DATE	APPROVED
✓	✓		S	REDRAWN & REVISED	4/20/78	PMF
✓	✓		T	OBS. -1 PER AF-4502	4/29/88	JT
✓	✓		U	REACT PER AF-6194	7/13/89	PMF/64
✓	✓		V	REV PER AF-6785	7/5/90	PMF/64



SECT A-A



- 1. CONTINUOUS STRIP, ON REELS.
- 2. DIMENSIONS IN BRACKETS ARE IN INCHES.

METRIC

STUD SIZE	0.8-2.0mm ² [18-14]	FINISH	TIN	MATERIAL	0.76 [0.030] BRASS	PART NO	60505-1
UNLESS OTHERWISE SPECIFIED DIMENSIONS ARE IN mm TOLERANCES ON: DECIMALS ±0.08 [0.003] ANGLES ±1°	CONTRACT NO	AMP INCORPORATED Harrisburg, Pa.					
MATERIAL	SEE TABLE	DR	NAME	RING			
FINISH	SEE TABLE	CHK	APPD	SIZE	CODE IDENT NO	DRAWING NO	
		APPD	OTHER APPD	B	00779	60505	
				SCALE		SHEET	

X-ON Electronics

Largest Supplier of Electrical and Electronic Components

Click to view similar products for [Terminals](#) category:

Click to view products by [TE Connectivity](#) manufacturer:

Other Similar products are found below :

[00-054007-01074-6](#) [00-054007-70206-1](#) [00-054007-70210-8](#) [00-054007-70217-7](#) [00-054007-70226-9](#) [00-054007-70228-3](#) [00-054007-70248-1](#) [00-054007-70256-6](#) [00-054007-70301-3](#) [00-054007-70316-7](#) [00-054007-49560-4](#) [00-054007-70209-2](#) [00-054007-70225-2](#) [00-054007-70227-6](#) [00-054007-70231-3](#) [00-054007-70241-2](#) [00-054007-70242-9](#) [00-054007-70244-3](#) [00-054007-70246-7](#) [00-054007-70263-4](#) [00-054007-70288-7](#) [00-054007-70290-0](#) [00-054007-70300-6](#) [00-054007-70304-4](#) [01-2065-1-0216](#) [01-2900-1-04412](#) [00581P0075](#) [600TS-10](#) [60205-1](#) [604200-1](#) [605601-1](#) [60598-1-CUT-TAPE](#) [61314-6-C](#) [61810-3](#) [61-S](#) [61-SN](#) [626-0194](#) [62-NBM-A](#) [62-SN](#) [62-SP](#) [63-S](#) [640179-1](#) [M55155/059I03](#) [M55155/079C01](#) [M55155/099H02](#) [M55155/109H01](#) [M55155/109H02](#) [M55155/12XH05](#) [M55155/16XH02](#) [M55155/29-5S](#)